

# New Zealand School Model Post Offices

The New Zealand Post Office was instrumental in arranging unofficial post offices in schools. These model post offices are more educational but do handle mail but are not open to the public. The first model post office was opened at Kelburn school in May 1952. It was experimental but proved its value in teaching children the handling and saving of money, the use of telephones and telegrams, the various postage rates and encouraged letter writing. Other model post offices were set up in schools and a information circular prepared as a promotion.

The NZ Post Office actively cooperated with publicity posters, postage stamps for sale, a postman's hat, old telephone sets, a post office guide and a rubber cachet to apply on mail. The cachet was supposed to be applied in the back of letters which were put in a mail bag collected by the rural carrier or taken to the nearest post office for despatch.

There have been model post offices in 52 schools [some have had several over years] with 62 different listings known but examples of 20 have not been recorded as sighted. The period of operation is often unknown - they were closed in school holidays. The mail volumes are not known. Examples are far from common especially non-philatelic items.

## References:

- School Post Offices. R M Startup The Mail Coach Vol 2 No. 1 - 1965
- School Model Post Offices. Andrew McNiven The Mail Coach - August 1990
- School Model Post Offices. Andrew McNiven The Mail Coach - December 2007
- Epsom and Silverdale Model School Post Offices have their own articles in The Mail Coach

## APITI SCHOOL MODEL POST OFFICE

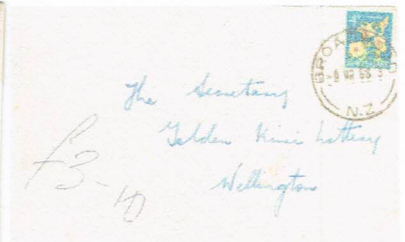
Small rural school in Oroua Valley 40km north of Feilding. Centenary celebrated 7-9 February 1986.  
Boxed cachet 85mm x 22mm. Opening day 9 December 1985, closing day 8 February 1986.





**BROADWOOD D.H.S MODEL POST OFFICE**

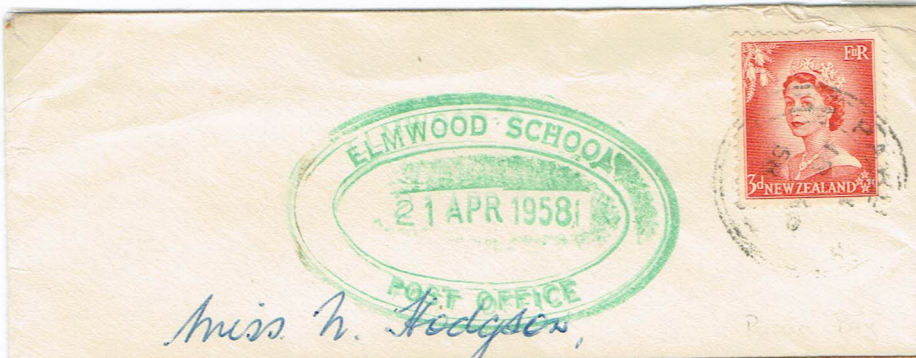
Decile 1 Rural school 25Km north of Hokianga harbour. School opened 1908, became DHS [District High School] 1952 and Area School 1973. Boxed 3-line cachet 55 mm x 19mm. Recorded 6 November 1963 to 1 March 1972.



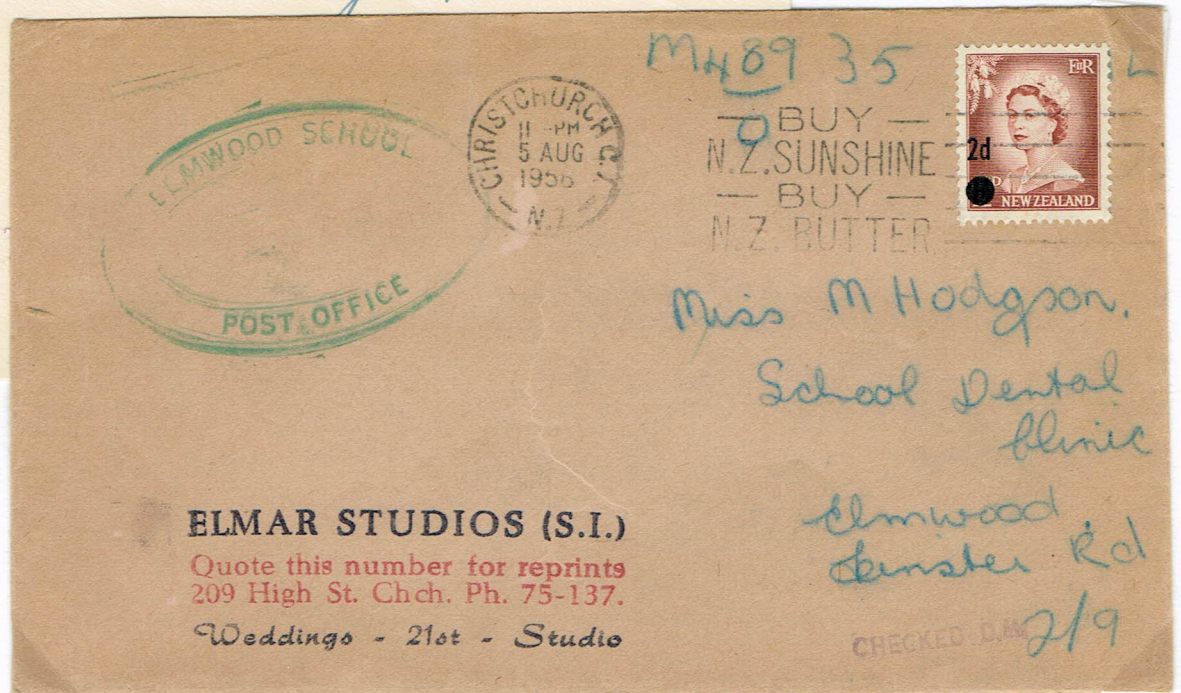
Broadwood  
9 MR 66  
to Golden Kiwi  
Lottery  
non-philatelic

**ELMWOOD SCHOOL POST OFFICE**

Suburban Christchurch. School founded 1882 - District school 1908; Normal school 1954. Decile 10 Oval cachet 51mm x 32mm in green.. Known 18 April 1958 to 10 February 1960. Believed open 1957-1962.



Parua Bay 18 AP 58  
non-philatelic to  
Elmwood Dental  
Clinic  
21 APR 1958  
Earliest Date



Christchurch  
5 AUG 1958  
non-philatelic to  
Elmwood School  
Dental Clinic

**ELMAR STUDIOS (S.I.)**  
Quote this number for reprints  
209 High St. Chch. Ph. 75-137.  
Weddings - 21st - Studio

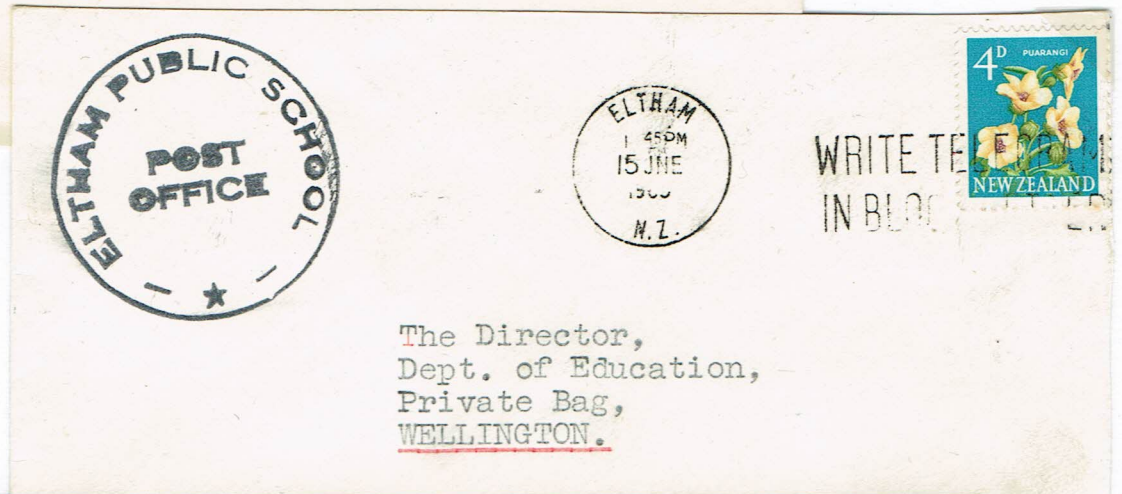
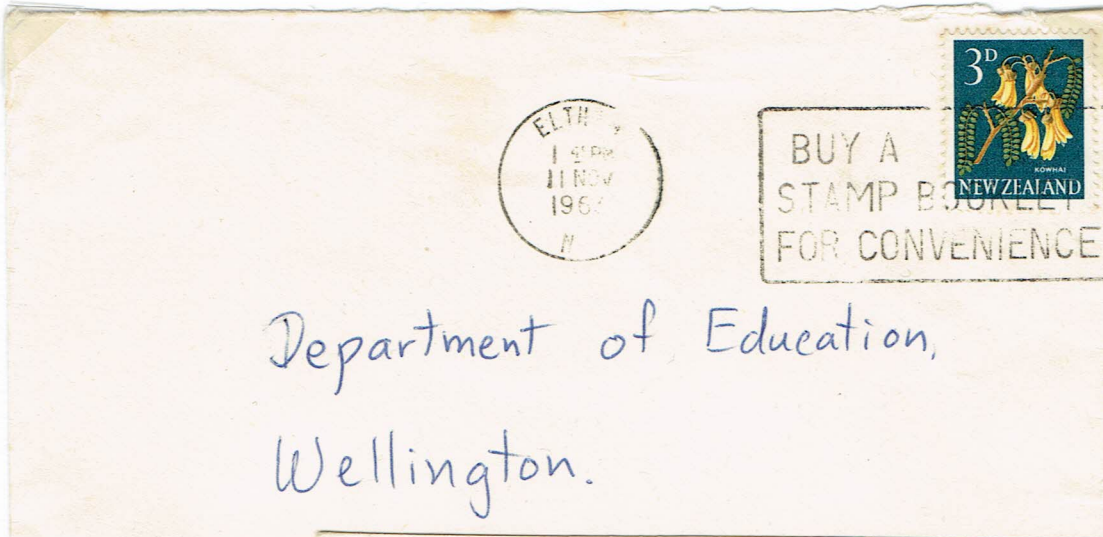
Elmwood  
Dunster Rd  
CHECKED D.M. 2/9



**ELTHAM PUBLIC SCHOOL POST OFFICE**

Decile 3 school founded 1886, South Taranaki 50km South New Plymouth.

Circulat cachet 37mm known 1 May 1959 to 22 September 1972. Believed started in August 1957.



Eltham 22 SP 70 cachet on front



**EPSOM NORMAL SCHOOL**

Suburban Auckland. Articles in Mail Coach Vol 16 p 204 and Vol 17 P 113

Opened 14 July 1980 - 134 FDC processed. Special Epsom School Post cachet [designed by S Langeveld aged 9] with One Tree Hill and Maori Tiki and 5-line cachet applied. From 1 November 1980 a small charge was made and a set of local stamps with the same design was produced. Last recorded use for Save the Children Fund 8 OCT 1981.

Epsom Primary School  
41 The Drive  
Epsom  
Auckland 3

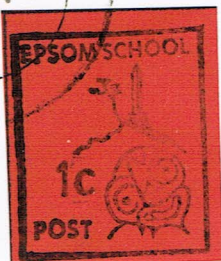


Official Opening  
Epsom School  
Model Post Office  
14 July  
1980



Julia Edgington  
96 Ranfurly Rd  
Epsom  
Auckland 3

SAVE THE  
CHILDREN FUND  
8 October 1981



Mr. R.M. Startup  
P.O. Box 275  
Masterton.



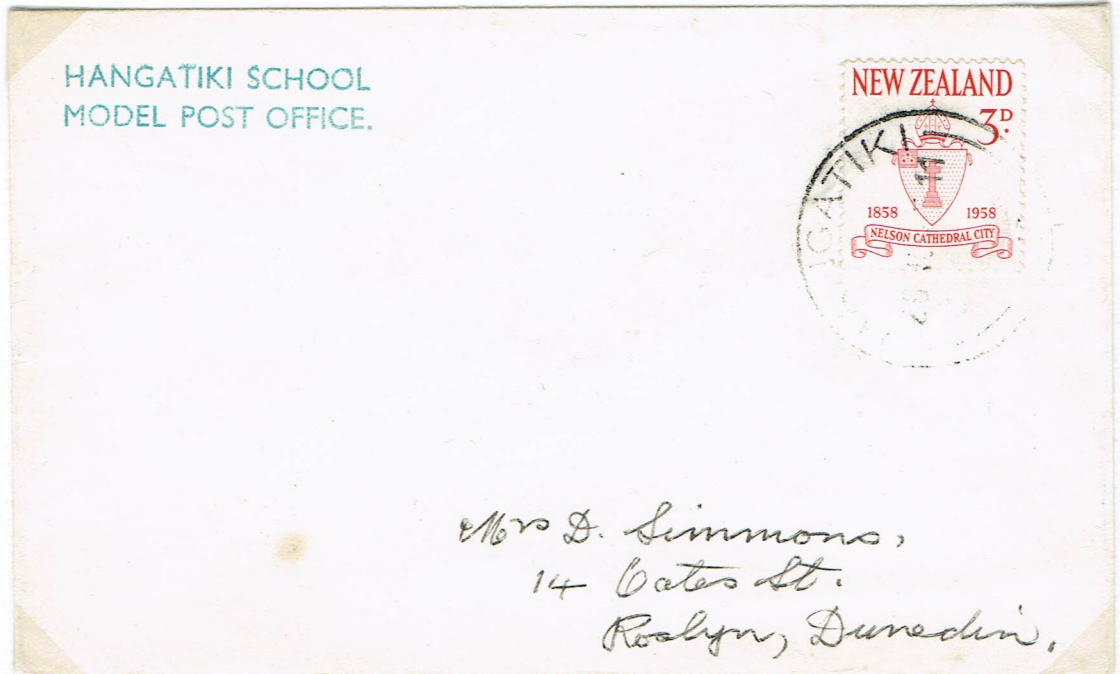
Epsom School  
Model Post Office



**HANGATIKI SCHOOL MODEL POST OFFICE**

On Hangatiki East Road off SH3, 8Km south Otorohanga. Since closed  
2-line cachet 40mm x 8mm - known 1 July 1965 to 26 November 1965

Hangatiki  
25 JL 1965  
Mrs Simmons  
early PH  
collector



3-line cachet 32mm x 8mm known first day 5 September 1977 - to 14 December 1977. Established by teacher Bevan Gibson - secretary Otorohanga Stamp Club - children made lino cut cachets for covers

Hangatiki  
5 SP 77  
First Day



HANGATIKI SCHOOL  
MODEL  
POST OFFICE

Hangatiki  
14 DE 77  
latest date

HANGATIKI SCHOOL  
MODEL  
POST OFFICE



**HIKURANGI PRIMARY SCHOOL MODEL POST OFFICE  
HIKURANGI SCHOOL MODEL POST OFFICE**

Hikurangi 17km north of Whangarei. Currently a decile 1 school with nearly 200 pupils, the school opened in 1883 and moved site in 1917. It was replaced in 1973.

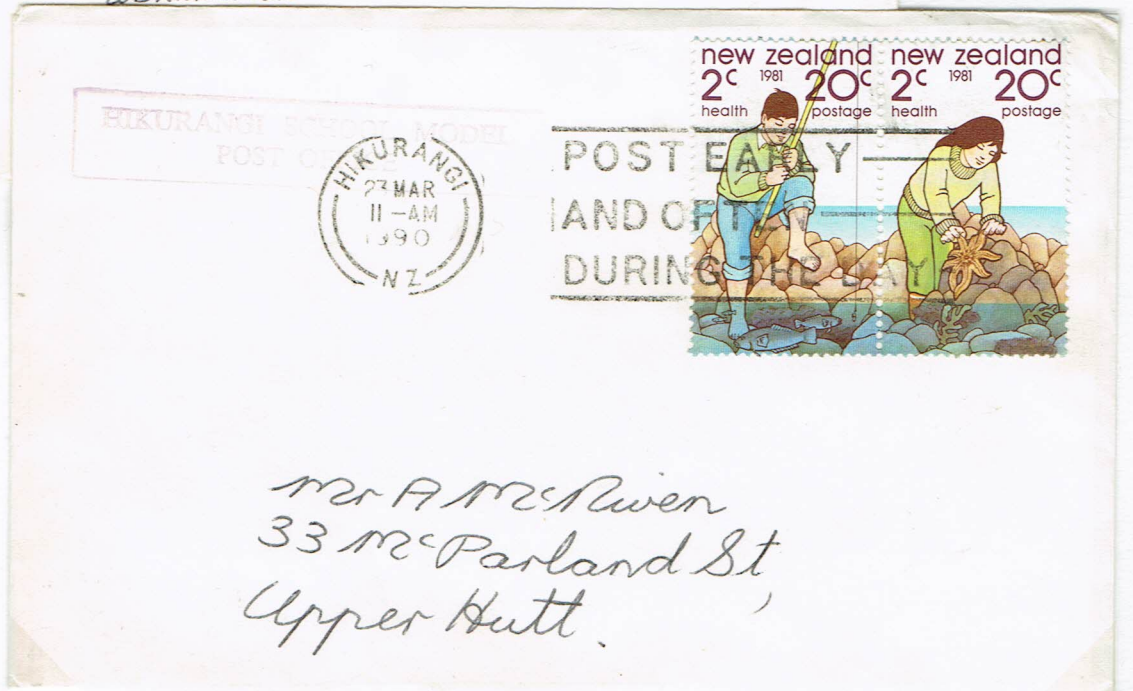
**3-line cachet**  
36mm x 11mm -  
Known  
20 November 1962 -  
13 December 1966  
to Eric Gibbs  
collector



**2-line  
boxed cachet**  
67mm x 8mm -  
Known  
25 FE 1972 -  
28 FE 1986

MR A. MCNIVEN  
P.O. BOX 2489  
WELLINGTON

**2-line boxed cachet**  
62mm x 7mm -  
Known  
10 March 1990 to  
10 March 1996



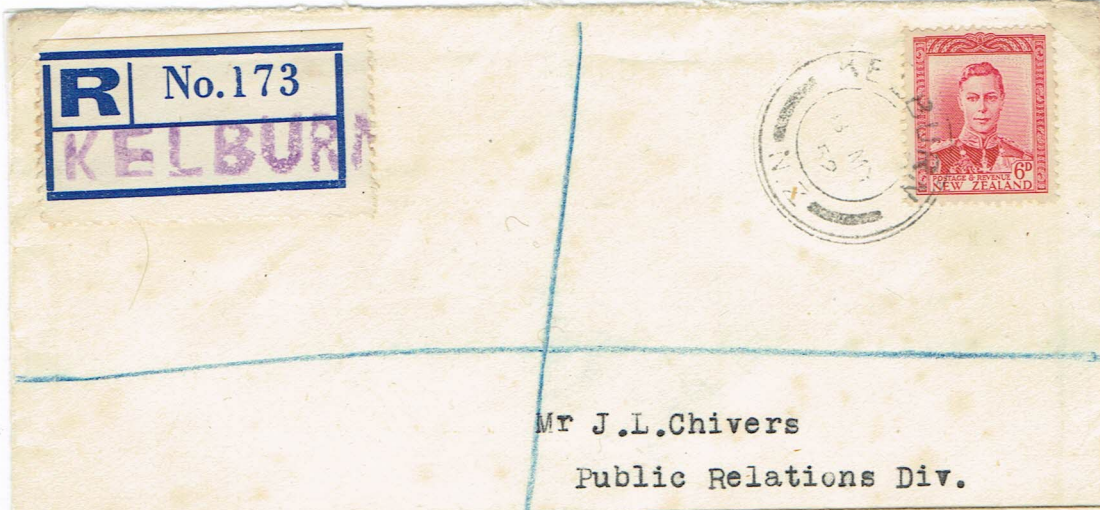
Mr A McNiven  
33 McParland St  
Upper Hut.



**KELBURN SCHOOL CHILDREN'S POST OFFICE**

Kelburn is an inner suburb in Wellington. The School was established in May 1914. This was the first School Model Post Office to be opened - 3-line cachet 31mm x 13mm known First Day 8 May 1952 to 14 July 1960. The cachet used correctly on the reverse of the envelope.

**First Day Cover Kelburn  
8 MY 52 from A Helm  
Public Relations Division  
GPO Wellington.  
Registered Kelburn label  
173 with 6d [4d  
Registration+ 2d postage]**

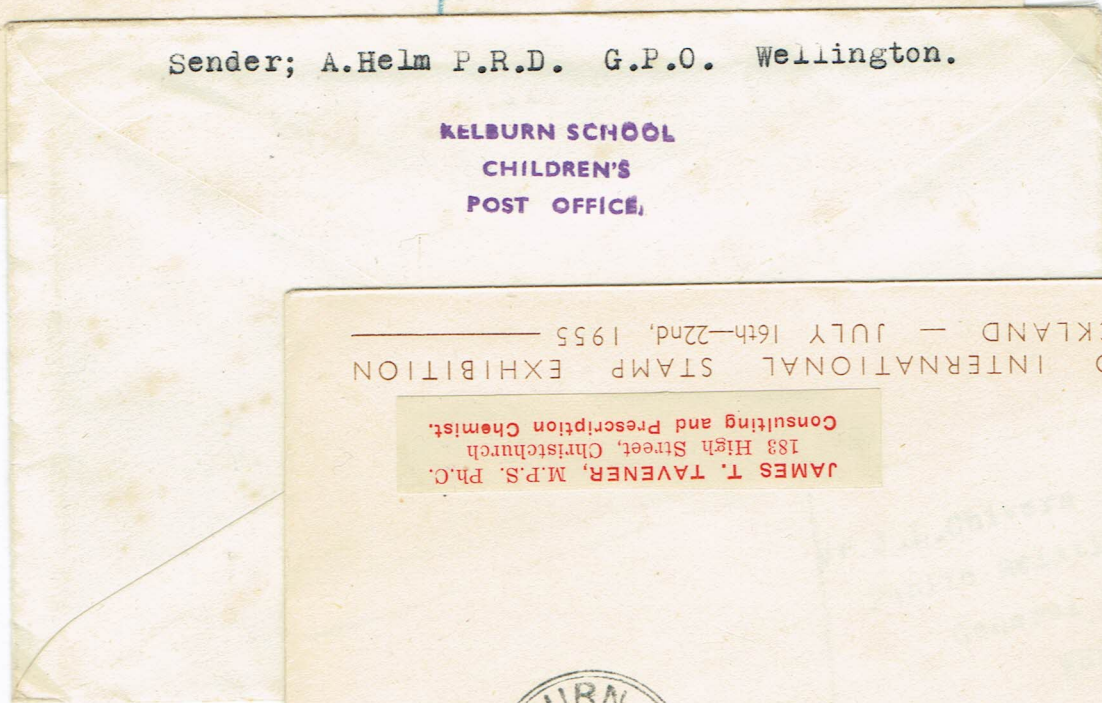


Mr J.L.Chivers  
Public Relations Div.

**Kelburn 8 MY 52  
First Day with 2d  
postage to Mr Chivers at  
Public Relations Division  
General Post Office  
Wellington**

Sender; A.Helm P.R.D. G.P.O. Wellington.

**KELBURN SCHOOL  
CHILDREN'S  
POST OFFICE,**



NEW ZEALAND INTERNATIONAL STAMP EXHIBITION  
AUCKLAND — JULY 16th—22nd, 1955

JAMES T. TAVENER, M.P.S., Ph.C.  
183 High Street, Christchurch  
Consulting and Prescription Chemist.

**1855 - 1955**



**NEW ZEALAND**

**KELBURN SCHOOL  
CHILDREN'S  
POST OFFICE,**

Kelburn 9 JL 52



### SCHOOL POST OFFICE MAMAKU

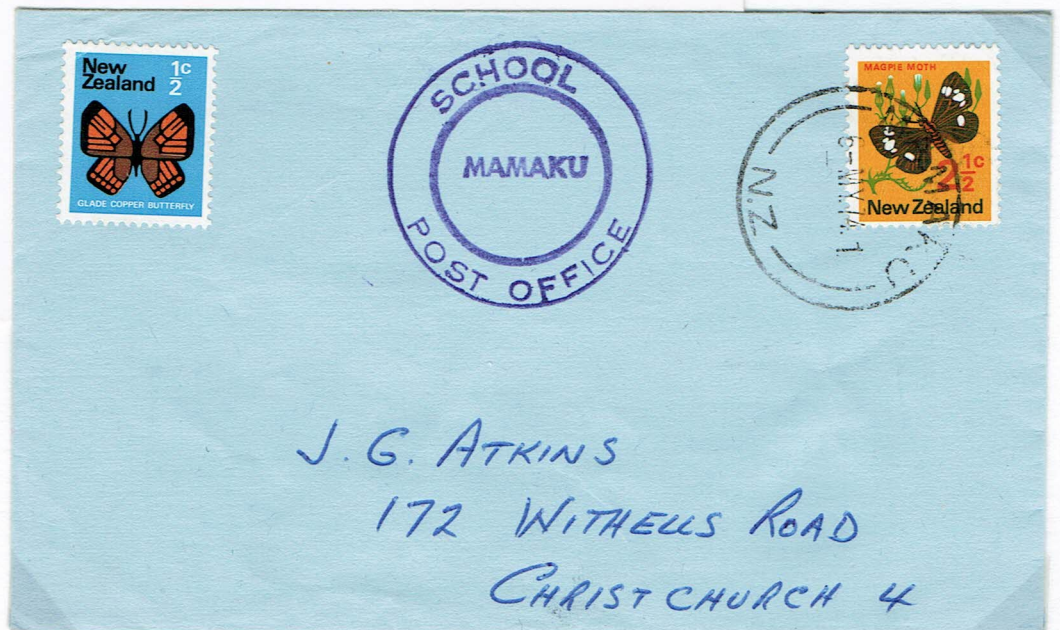
School established 1910 [initially at the Mill] 4km south of SH 5 on the high point of the Rotorua branch railway line [since closed] Present role about 40 children. Circular 34mm cachet now in Post office archives.  
Known 16 March 1965 to 10 February 1976.



Registered Mamaku 31 OC 66 with Christchurch Registered 1 NO 66. Signed Glenys Baker Postmistress  
Mrs Hunt - an early collector of postal history.



Mamaku 12 NO 65  
Eric Gibbs cover

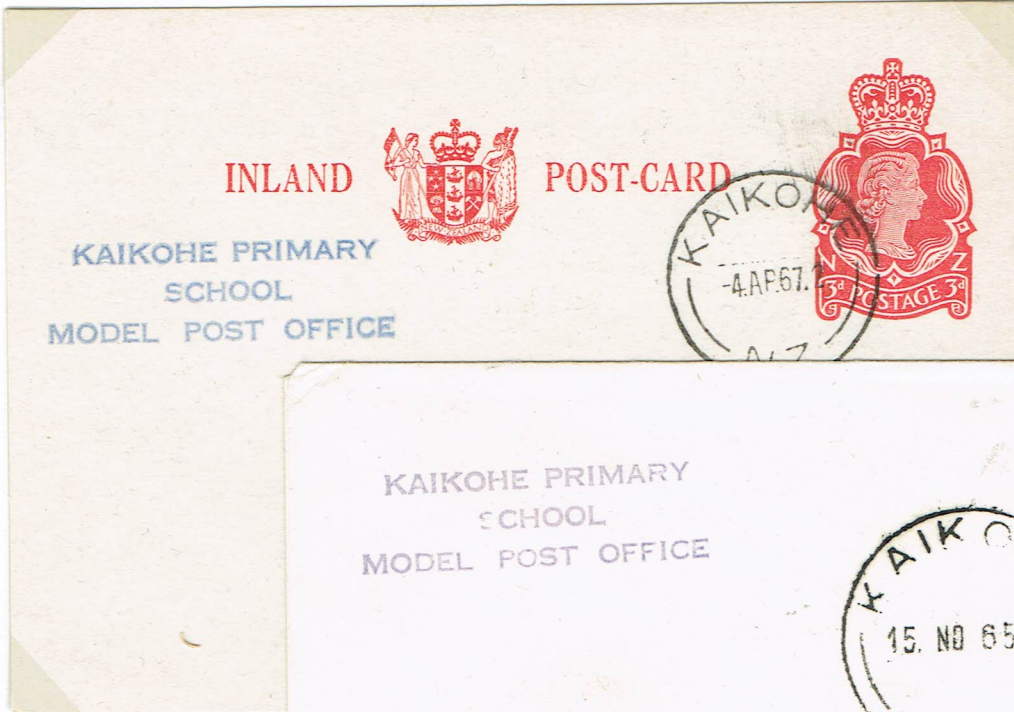


Mamaku 6 MY 74



**KAIKOHE PRIMARY SCHOOL MODEL POST OFFICE**

Small decile 1 school in Northland town. Replaced by Kaikohe Intermediate 1969 when Kaikohe East and Kaikohe West primary schools opened. 3-line cachet known 15 November 1965 to 4 April 1967.



**Kaikohe 4 AP 67**  
Latest date



**Kaikohe 15 NO 65**  
Earliest date  
Cachet also on  
envelope flap

**MAROMAKU SCHOOL MODEL POST OFFICE**

Decile 3 school 5 km NW Towai and 40km North Whangarei. Boxed 3-line cachet 30mm x 15mm. Known 17 September 1965 to 26 June 1969. The 7 April 1967 date had manuscript correction from March.



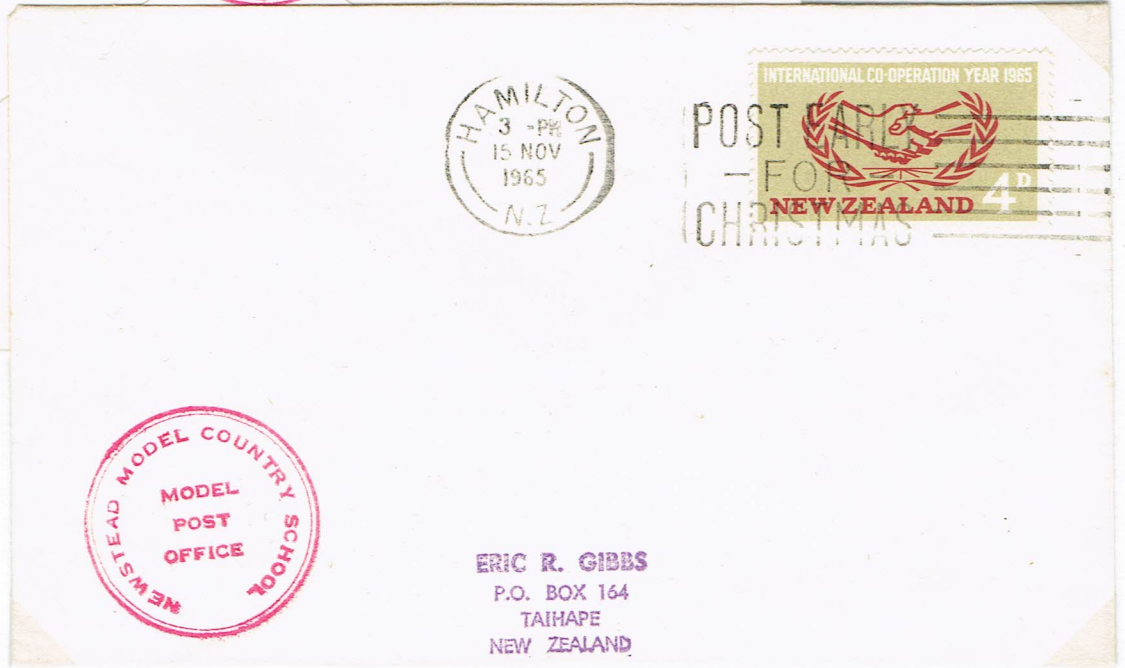


**NEWSTEAD MODEL COUNTRY SCHOOL MODEL POST OFFICE**

Small rural school on 7km on Hamilton-Morrinsville road. Newstead post office closed 1937  
Circular 30.5mm cachet Known 10 June 1965 to 23 September 1970.



**15 NOV 1965**  
Eric Gibbs covers  
Cachet on reverse  
as well



**OKAIHAU D.H.S POST OFFICE**

31 km north Kawakawa in Northland. School established 1874, replaced 1889 became a consolidated school in 1938 and District High School [DHS] in 1947. Converted to College 1973 with separate primary school.  
50mm x 15mm 2-line boxed cachet, known 19 November 1962 to June 1 1967



**Okaihau 1 JE 67**  
Latest date



# PIPIRIKI [MAORI] SCHOOL MODEL POST OFFICE

Pipiriki is 80km NE Wanganui on the Wanganui River. Post Office closed 1973. 3-line cachet 38mm x 12mm.  
Known 8 May 1969 to 13 December 1971 - the "MAORI" was removed before October 1971

**Pipiriki 6 MY 69**  
**Earliest date**

Mrs Walker - an early collector of postal history.

Enclosed letter includes:

*"This post office is a combined school and post office run by school children so they can get experience with money. The Postmaster is also the school teacher. There are 22 children at this school."*

*This post office is a combined school and post office run by school children so they can get*

PIPIRIKI MAORI SCHOOL  
MODEL  
POST OFFICE.



PIPIRIKI MAORI SCHOOL  
MODEL  
POST OFFICE.



PIPIRIKI SCHOOL  
MODEL  
POST OFFICE.

INLAND



POST-CARD



MRS. E. McLAUGHLIN,  
1048 HIGH STREET,  
LOWER HUTT,  
NEW ZEALAND.

**Pipiriki 29 MY 69**  
Frank Watters -  
early collector

**Pipiriki 13 OC 71**  
**Latest date**  
**MAORI removed**  
from cachet  
Mrs McLaughlin -  
early collector



**POKENO SCHOOL MODEL POST OFFICE**

Township 50km south Auckland. 31mm circular cachet. Only one example 30 July 1965.

**Pokeno 30 JL 65**  
**Only known example.**

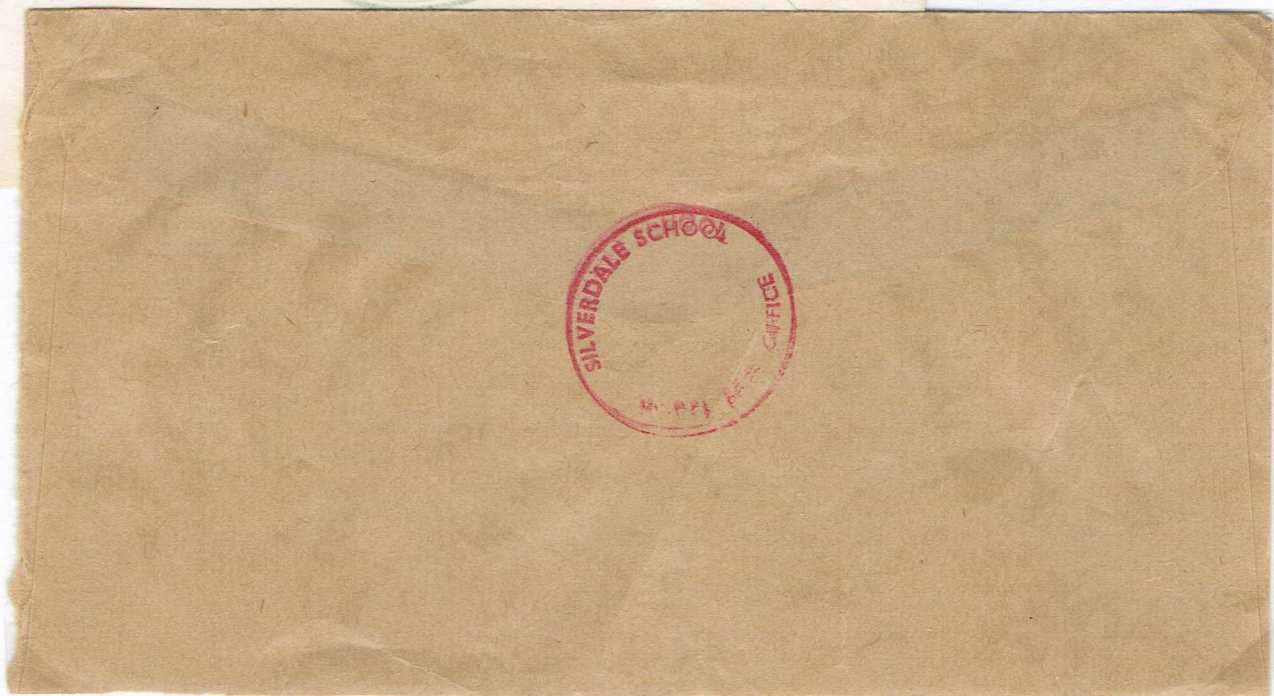
Non-philatelic, cachet  
correctly used on reverse



**SILVERDALE SCHOOL MODEL POST OFFICE**

30km North from Auckland. Silverdale school model post office 38mm x 25mm oval cachet known 25 November 1965 to 12 December 1966; 30mm circular cachet known 27 February 1988 to 15 March 1990.

**Silverdale 8 JE 66**  
**Frank Watters Cover**



Silverdale  
School  
Model  
Post Office  
Commercial  
usage



### SPRING CREEK SCHOOL MODEL POST OFFICE

22km south Picton 6 km north Blenheim. Present school opened in 1873 from amalgamation of two others.  
2-line cachet 47mm x 7mm. Known 11 June 1965 to 18 August 1971



Spring Creek  
6 AP 67  
Postal History  
Society card

### TANGOIO SCHOOL MODEL POST OFFICE

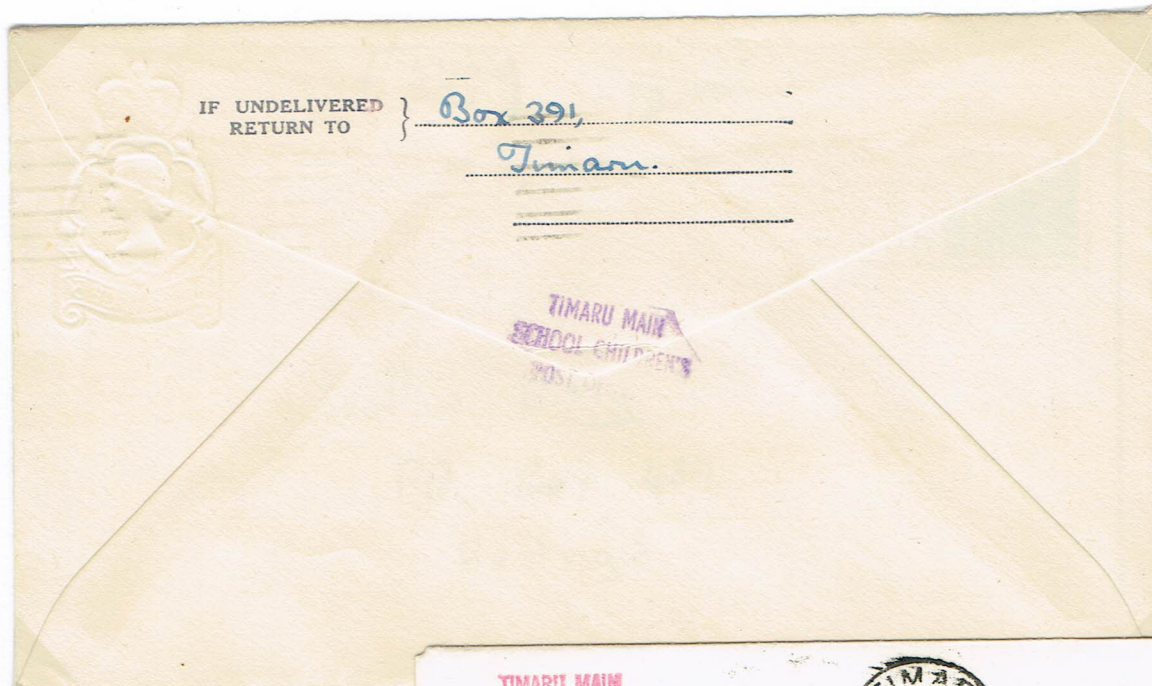
Tangoio native school was open 1902-1974 and is the subject of a book by Harry Tawhai.  
3-line cachet 21mm x 12mm - known 3 July 1971 to 29 September 1971.





**TIMARU MAIN SCHOOL CHILDREN'S POST OFFICE**

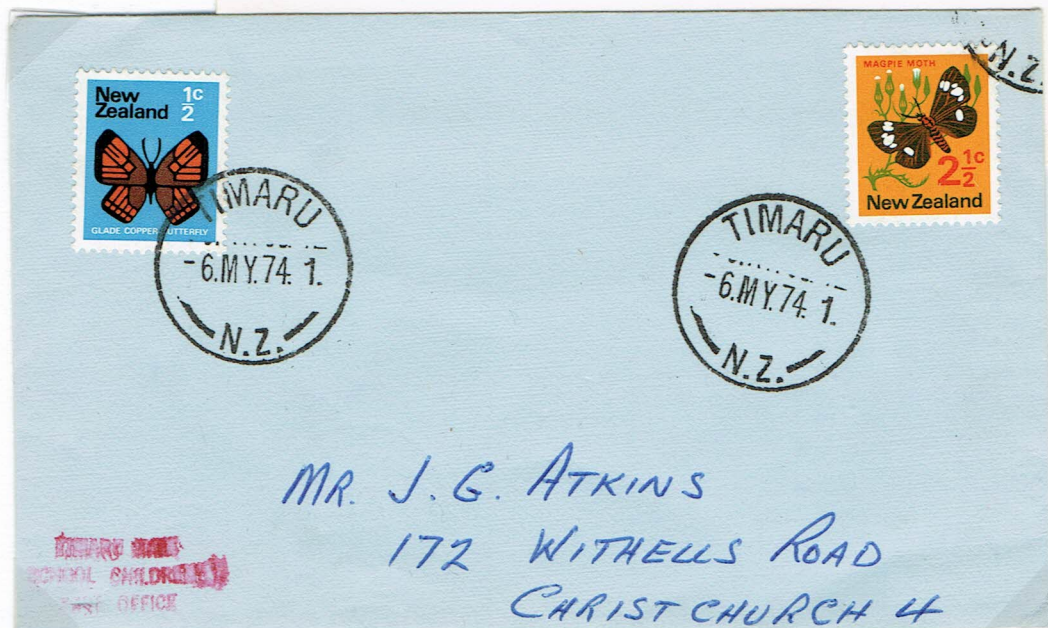
3-line 25mm x 10mm cachet known in purple in early years and red later. Known 27 May 1959 to 10 March 1976 but the model post office may not have been open each year but the same cachet was used



Timaru 16 NOV  
1959 machine

R D J Collins cover

Eric Gibbs cover





**TIMARU MAIN SCHOOL POST OFFICE**

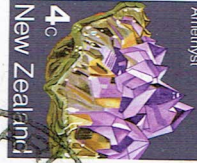
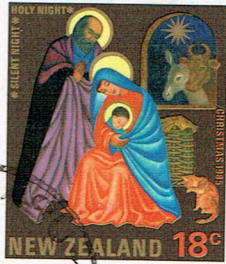
3-line boxed cachet 37mm x 18mm. Known one date only 4 March 1986



**Timaru Main School**

Grey Road,  
Timaru

Phone 47-759



Mrs H. Simpson,  
P.O. Box 2273,  
STORTFORD LODGE

**Timaru 4 MR 86 - only date**

Letter dated 20 Feb 1986

*"..The school was closed for 7 weeks as from the day you posted them to us. I have just received them from our office lady and am pleased to inform you that our model P O is still operational, but is used somewhat infrequently..."*

TIMARU  
MAIN SCHOOL  
POST OFFICE

**TURAKI SCHOOL MODEL POST OFFICE**

Full primary school established 1956 in Taumarunui. 3-line boxed cachet 37mm x 18mm  
- known 16 November 1965 to 15 April 1970

Taumarunui 16 NO 65  
Earliest date  
Taumarunui 8 NO 67  
Mrs V Francis - an early  
postal history collector

TURAKI SCHOOL  
MODEL  
POST OFFICE

TURAKI SCHOOL  
MODEL  
POST OFFICE



Marsh all,  
argwood st,  
elson.



Mrs V. C. Francis,  
8 Bayfield Rd.  
Dunedin, E.I.



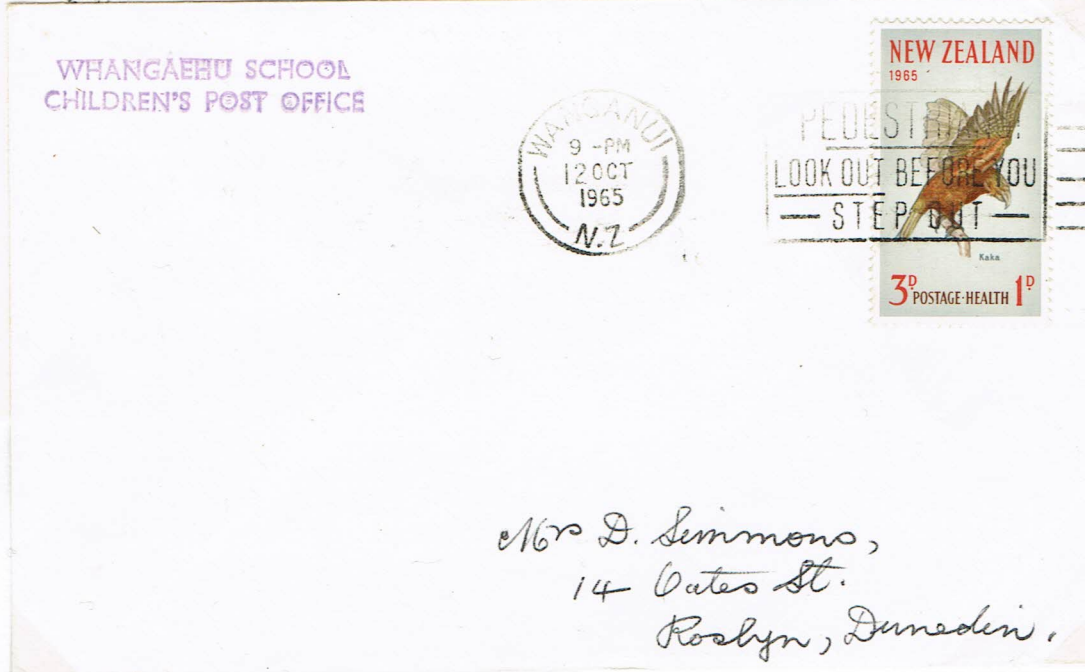
**WHANGAEHU SCHOOL CHILDREN'S POST OFFICE**

28km south from Wanganui - sole charge school with 10 children. 2-line cachet 47mm x 7mm known 11 June 1965 to 31 March 1967.



16 NOV 1965 Gibbs cover

12 OCT 1965 Simmons cvr



**WINDLEY SCHOOL POST OFFICE**

Suburban school in Porirua Wellington. 37mm x 31mm boxed cachet with day and month. Known 30 March 1961 to 11 March 1968.

Cannons Creek 24 JE 65

Porirua 15 NOV 1965



ERIC R. GIBBS  
P.O. BOX 164  
TAIHAPE  
NEW ZEALAND

Box 1605  
Auckland