

# Otorohanga & Postal District



Source: KiwiMaps

**Otorohanga** (Maori: *Ōtorohanga*) is a North King Country town in the Waikato region in the North Island of New Zealand. It is located 53 kilometres (33 miles) south of Hamilton and 18 kilometres (11 miles) north of Te Kuiti, on the Waipā River. It is a service town for the surrounding dairy-farming district. It is recognised as the "gateway" to the Waitomo Caves and as the "Kiwiana Town" of New Zealand.

[Wikipedia]

**This is a Collection of mostly postal-related material relating to Otorohanga and the surrounding District to 2000. The District is the area that initially had separate Post Offices but was later incorporated into the Rural Delivery routes based from the Otorohanga Post Office. Waitomo Caves is also included because of the close association.**

**It is presented in 3 Sections.**

From a Philatelic Exhibiting perspective, this would be regarded as "Display" or "Open" Class or "Postal History Special Studies" but is probably more suited for a "Talk & Display" to Community groups or stamp clubs.

# Otorohanga

## Food for a journey

*O.* food for a journey; *torohanga*: to cause to extend over a distance. There is a legend of a chief who was on his way to Taupomoana, and chanted incantations that stretched out his meagre supply of food to last the full journey.

Otorohanga was a Ngāti Maniapoto village with whares and was famous among the Maori for being one of the centres of cultivation and industry, with peach orchards, with wheat, oats and maize grown, pigs reared and flax dressed.

A **flour mill** was established in 1850 at Mahoaomui [near the end of McCreadys Road], an initiative from the Anglican Mission Station at Otawhao [later Te Awamutu] with the Orahiri Stream being diverted to provide the motive power. **Louis Hetet** [1816-1872], who had settled in 1842 in an area close to what was to become Te Kuiti, was the manager 1850-1855 then settled on the western [Honikiwi] side of the Waipa River where he opened a store and developed a farm. The Maori village was abandoned after the invasion of the Waikato, except for Louis Hetet's store and farm.

Hetet remained at Otorohanga during the troubled times of the Taranaki and Waikato Wars. He was a regular correspondent of [Sir] Donald McLean [native Minister] over many years and a number of his letters are in the McLean correspondence at the Alexander Turnbull Library in Wellington. The region was closed to Europeans for two decades after the Māori king, Tāwhiao, and his followers were exiled to Ngāti Maniapoto territory following the battle of Ōrākau in 1864.

On **January 29, 1870**, Louis Hetet, a European settler of French origin wrote a letter to his friend Donald McLean and he headed his letter with the address "**Otorohanga**" - this may be **earliest written mention** of the district which at that time referred to an area on the Honikiwi side of the Waipa River.

This letter is one of 23 letters written by Hetet from Mokau, Alexandra and Otorohanga, 1849-1871, and is part of the Donald McLean Papers in the Alexander Turnbull Library

Otorohanga 29/1/1870  
To Donald McLean Esq  
Dear Sir  
I beg to state that  
that I forward the enclosed  
Letter from Manuhiri  
We are very quiet here at  
present & I trust will con-  
-tinue so a number of fugi-  
-ve are on the road to Hopton  
but not many of any im-  
-portance, no matters re-  
-sults of the host.  
All the Mookau mob have  
gone back to their own

## Opening up the King Country.

In 1881, as a result of ongoing friction with his hosts, Ngati Maniapoto, over the question of land sales, and a general amnesty being granted to the rebels, the Maori King, Tāwhiao emerged and laid down the King Movement's arms. After successful negotiations between the Government, Wahanui, Rewi and Taonui, including a pardon for Te Kooti, and by 1883 the King Country was made accessible to Europeans. One stipulation made was that the area would have a prohibition on alcohol.

At a March 1883 meeting, a contract was agreed that allowed the surveying of the route to extend the railway 14 mi 20 ch (22.9 km) from Te Awamutu to Ōtorohanga.

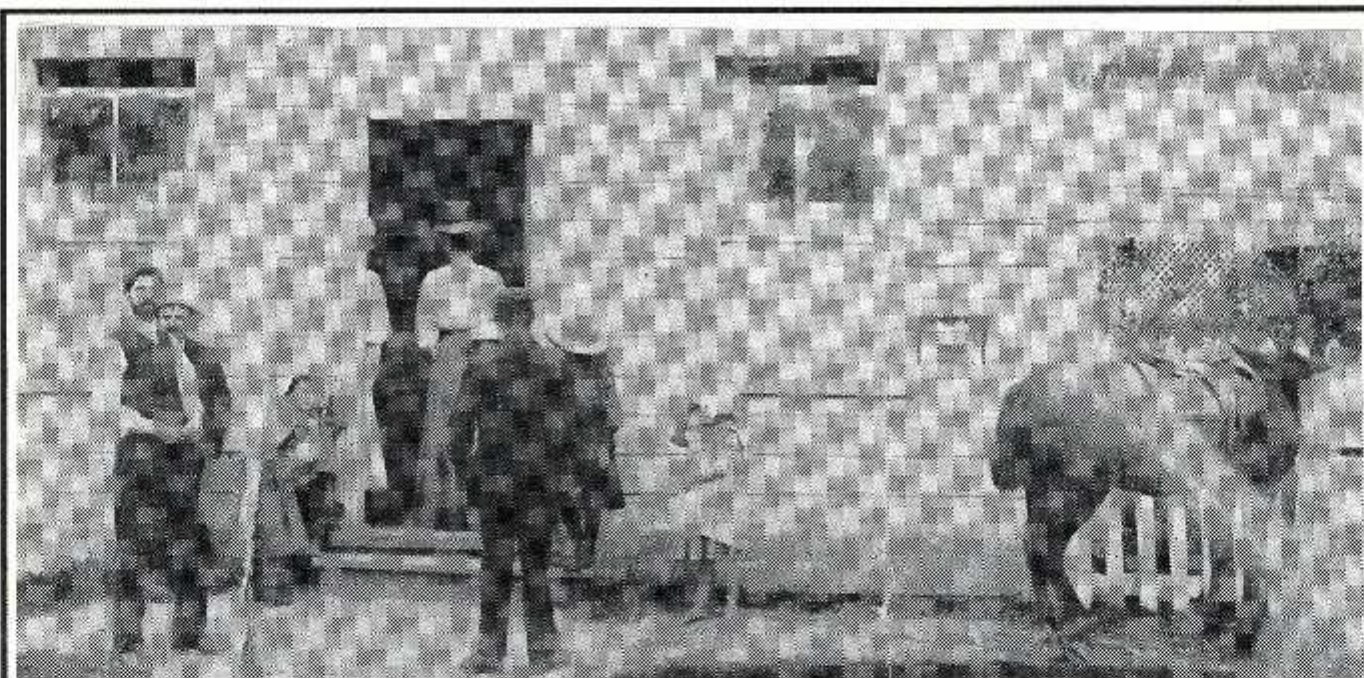
At a February 1885 meeting at Kihikihi with John Balance [Minister of Lands and Immigration and Minister of Native Affairs] construction of the line was approved with the first sod ceremony performed at the Puniu River on 15 April 1885. At the same time contracts were let for the construction of a road via Kihikihi to replace the bridle track that followed the Waipa River via Kopua [Cannons Road] to a ford on the Waipa below the developing settlement.

Trains were working through to Ōtorohanga by January 1887, and the extension opened on 6 March 1887, and handed over from the Public Works Department to the Railways Department (NZR) Wednesday **9 March 1887**. Initially trains only ran on Tuesdays and Thursdays. The 18.5 km extension to Te Kuiti was completed in October 1887 and opened for passenger services 2 December 1887. The NIMT was not completed until 1908.

By April 1887 there was a station building on the west side of the railway line, and by 1896 a platform, 12m x 9.1m goods shed, loading bank, cattle yards, and a passing loop for 31 wagons. There was a Post Office at the station from 1893 to 1908. In November 1910 the old station was moved to the town side of the line and the goods shed was moved near the old station site. On 17 December 1923 the station burnt down. The current station building opened in 1924.

The **first mail contracts** were from Kihikihi 3 times each month from 1882 and this continued until January 1887 when railway transport became available.

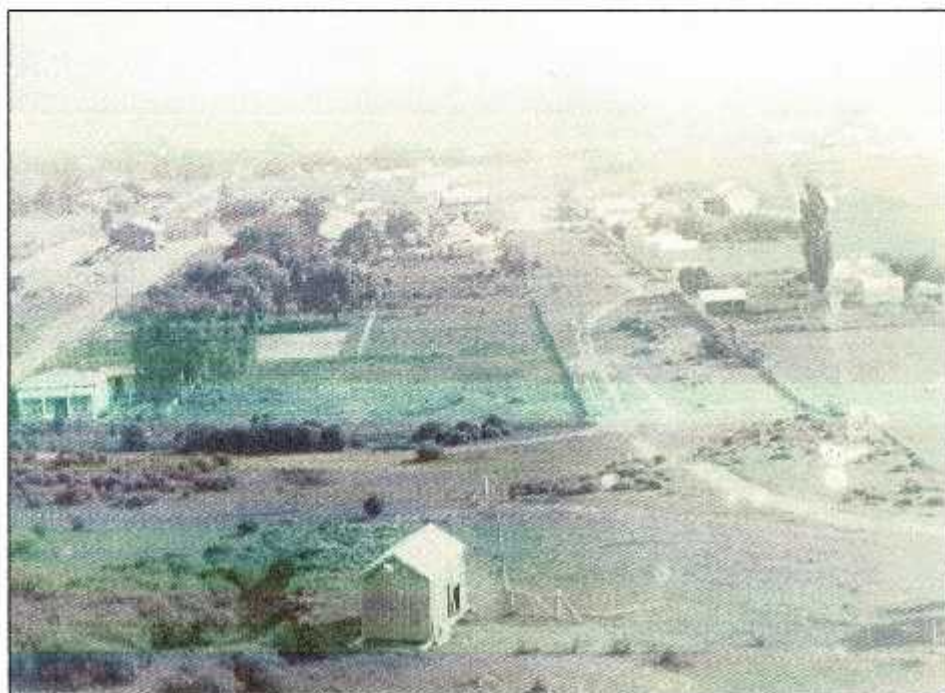
The **Otorohanga Post Office** opened **10 September 1885** in a building owned by Mr Ellis on NW corner Ballance and Maniapoto Streets. **J W Ellis** was the First Postmaster. Telegraph services were added 10 February 1890 and Money Order & Savings Bank [MO&SB] facilities on **1 November 1890** - because of the accounting and audit requirements involved with MO&SB - the first Otorohanga datestamp was provided - "A" Class. In **1893**, the Post Office was moved to the railway station



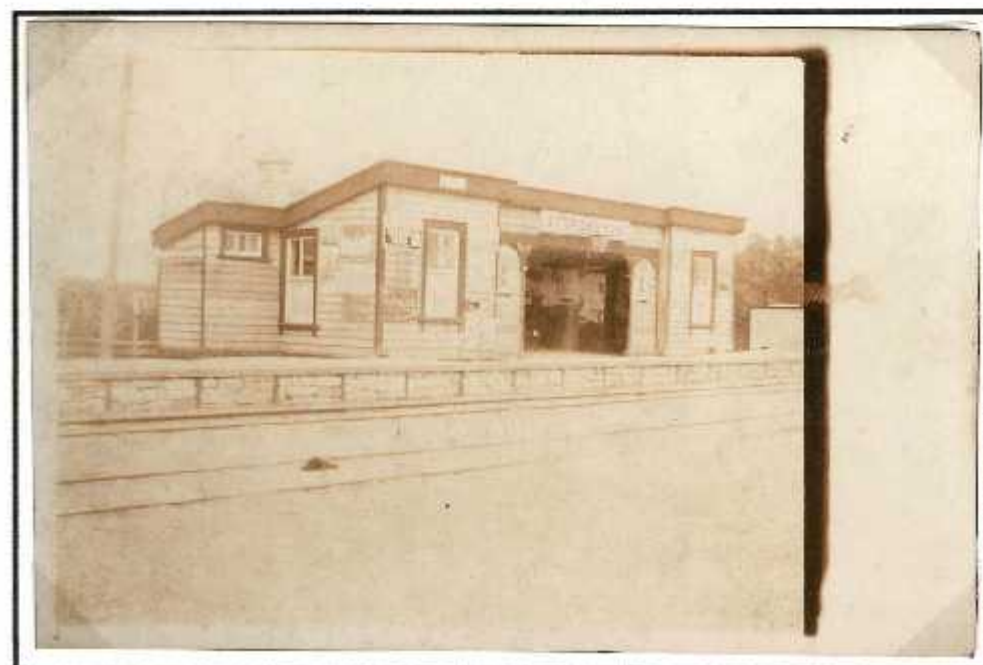
This is Otorohanga's original Post Office set up in 1885. Subsequently in 1893 the Post Office was removed to the Railway Station and the building was used as the first agency of the Bank of New Zealand. Photo Taken about 1909.

Mr Kidson (Postmaster) — William Rattray at rear  
Back view of lady on door step - Eva Wyllie - Mrs Stan Vicary  
Girl on doorstep with boots - Darsey Morresey  
Girl beside her with bare feet - Ellie Morresey  
Man standing outside with back to camera - Mr Isaac

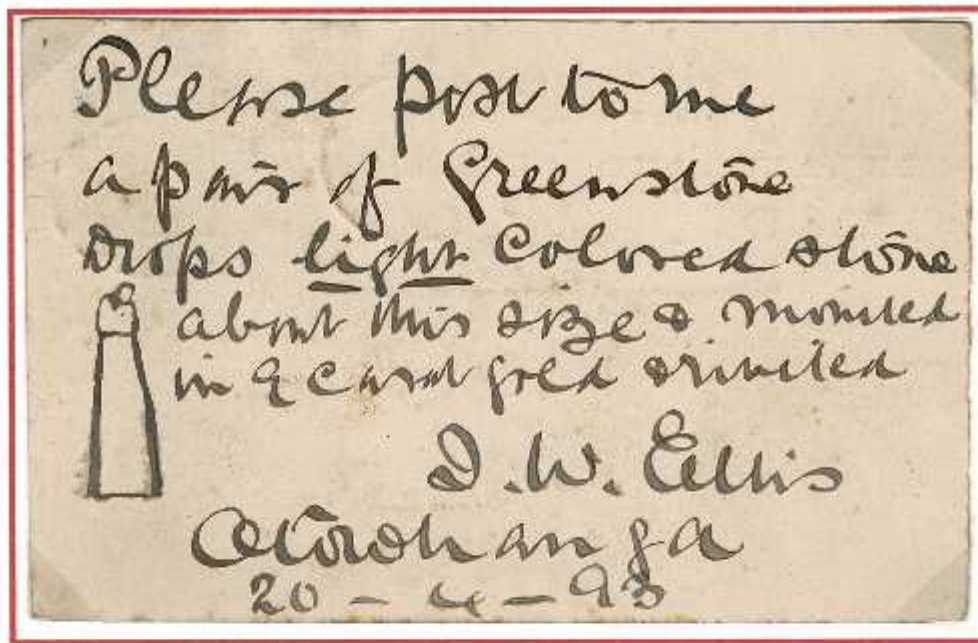
From "Those were the Early Days in Otorohanga - Centennial Celebrations 1885-1985"



Photograph "Otorohanga 1887" [original in exhibitor's hands]



Railway Station & Post Office [c. 1906]



1d Queen Victoria Postcard [issued 1890] from J W Ellis - Otorohanga First Postmaster "20-4-93"  
 Obliterator A 94 of Otorohanga [probably issued in 1885], Kihikihi "A" Class 20 AP 93 and Auckland 21 AP 93.

When the decision was made in 1908 that Post Office was to be made **Permanent**, a temporary office was set up in the original Post Office building, then the BNZ office, on Maniapoto street on **26 November 1908**. The new Post Office on the NE corner of Tuhoro and Maniapoto Street was opened **27 November 1909**.  
 [King Country Chronicle 2 December 1909]



**Performed by Mr Jennings, M.P.**

Otorohanga presented an unusually animated scene on Saturday last the town being gay with bunting and the main street thronged with people.

The occasion was the opening of the new post office by Mr W. T. Jennings, member for the district, and settlers from the surrounding districts foregathered to do honour to the occasion.

The ceremony took place at 5 o'clock Mr Jennings being introduced by Mr John Ormsby. Mr Ormsby referred to the importance of the occasion and heartily welcomed Mr Jennings, who had made a special point of being present.

Mr Jennings who was received with applause said he had been entrusted with a pleasurable duty. He referred

M. A. WILKINSON, 126 RYAN, 1909

In 1908 the business was sufficient to warrant the office being made a permanent office, and on the 26th November of that year it was removed to temporary premises in Maniapoto Street and placed in charge of Mr C. Kidson, the present Postmaster.



Real Photograph Postcard, details unknown, probably F. W. Whyte stationer.

27 November 1909. I'm standing at the foot of the "Member" reading an address directly behind the hard hat, just only hair showing.... "Oto on gala day."

The report in the King Country Chronicle 2 December 1909 stated that the Post Office was to become **Permanent** as business had improved so much. A comparison between 1898 and 1908 was included with the details.



This a photograph by A Price dated 1910

—1898—		
	No.	Value £
Letters and postcards posted	10,920	
Other articles posted	1,170	
Letters and postcards delivered	14,976	
Other articles delivd	11,778	
Postal Revenue		122
Money-orders issued	437	1188
Money orders paid	124	609
Savings-bank deposits	133	2270
Sav.-bank withdrawals	73	901
—Telegrams 1899—		
Telegrams forwarded	2,847	219
Telegrams received	2,639	
Transmitted telegrams, i.e., received at Otorohanga for onward transmission:		Nil
—1908—		
	No.	Value £
Letters and post-cards posted	31,554	
Other articles posted	6,877	
Letters and postcards delivered	44,902	
Other articles delivd	16,835	
Postal revenue		199
Money orders issued	700	2591
Money-orders paid	185	1203
Savings-bank deposits	252	2904
Sav.-bank withdrawals	229	3520
—Telegrams 1908—		
Telegrams forwarded	5489	181
Telegrams received	4348	
Transmitted telegrams, i.e., received at Otorohanga for onward transmission:		152

## OPENING CEREMONY AT OTOROHANGA.

The fine new Post Office at Otorohanga was officially opened on Wednesday by Mr. W. J. Broadfoot, M.P. for Waitomo. The chairman of the Otorohanga Town Board, Mr. F. O. R. Phillips, presided over the ceremony.

The new office will be a fine acquisition to the town. It is situated in the main street and has two street frontages. Designed in the latest Post Office architecture, the new office has an attractive tiled vestibule, a large mail room and a telephone exchange which will not be brought into service for some time.

The new exchange, when in operation, will have 450 lines with provision for 600 lines which, with several party phones operating will mean a great number more subscribers. The Otorohanga telephone exchange is one of the largest in the Hamilton Postal District.

A new Post Office was opened 17 May 1939 and included a postmaster's house adjacent. When the Post Office was down-graded 1988 it became the office of Bailey Ingham, accountants.

The Post Office facilities were transferred to Post Shop in the stationer's on Maniapoto Street



## Native Land Court

The Native Land Court of New Zealand was established under the native Land Act 1865. It was to facilitate the purchase of Maori land by the Crown, convert communally owned land to Maori freehold title and to settle border disputes between different groups with conflicting claims.

In 1886 Ngāti Maniopotō built a court room in Otorohanga for the Native Land Court and disputes which had delayed township development were settled.

The New Zealand Herald 31 July 1886 under Native Land Court Otorohanga heading "*there is no accommodation for natives and Europeans.*"

The New Zealand Herald February 1887 included an advertisement for tender to construct an accommodation house.

The same paper 28 April 1887 states that "*Lewis Hetet is building a 14-room Temperance Boarding House for Europeans attending the Land Court.*"

[The agreement to allow settlement included a no alcohol stipulation]

Otorohanga is a native village on the North Trunk Line, situate on the Waipa river, and distant from Kihikihi about 22 miles by road, and the distance when the railway line is formed will be reduced to 14 miles from the present terminus, Te Awamutu.

The chief Taonui has his principal residence here. In anticipation of the sitting of the Court a large public hall had been erected at his cost, and that of the natives, on a very pretty site overlooking the whole Otorohanga Valley. The Court sits in this building. The engineer's house and two stores comprise the remaining European-built premises in the township. Two other stores are,

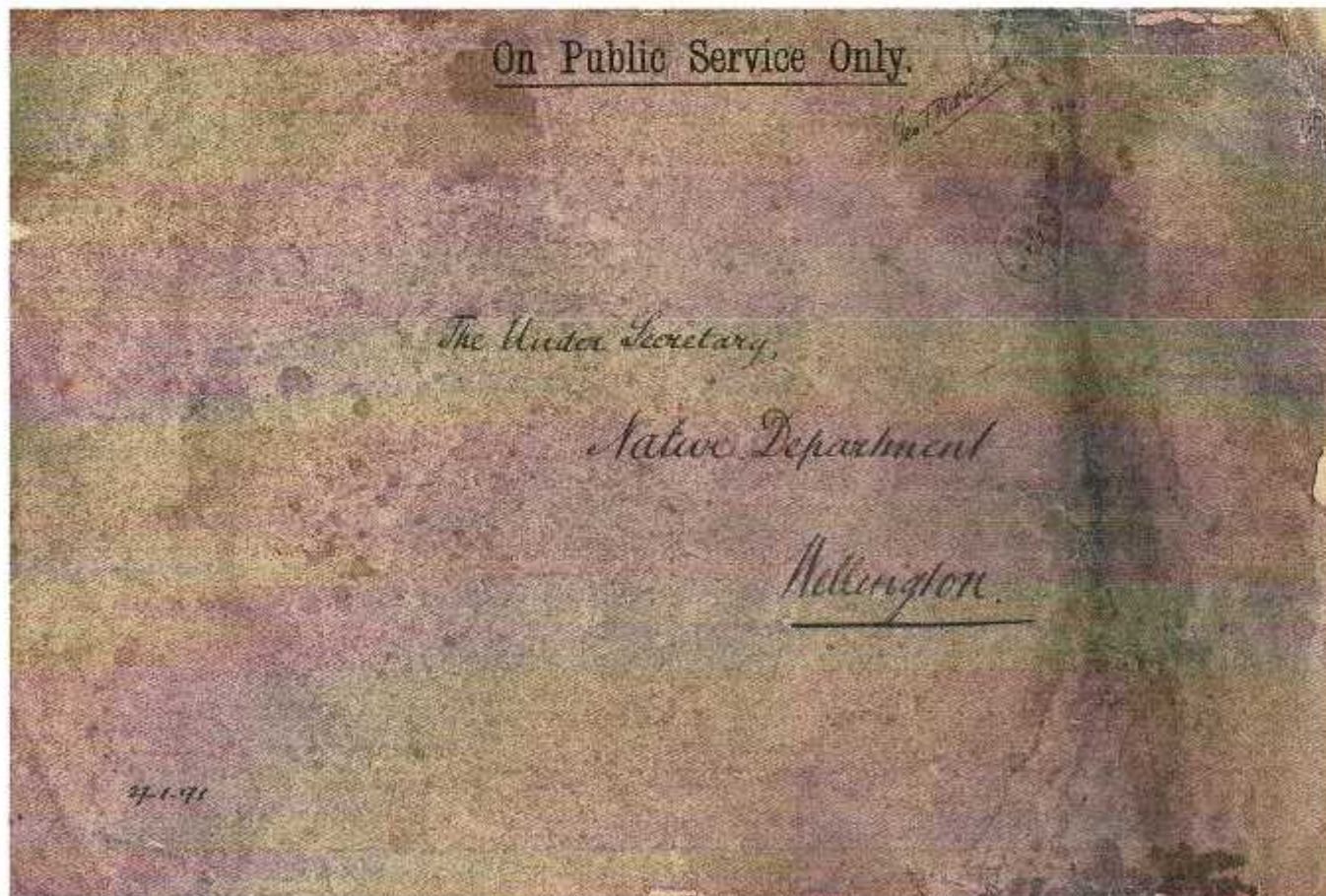
TENDERS for the ERECTION of an ACCOMMODATION HOUSE at Otorohanga, (labour only,) will be received by the undersigned at Otorohanga until 6 p.m., 28th February, 1887.

Plans and specifications to be seen at Mr Ellis's store, Otorohanga.

MESSRS ORMSBY AND HETET.

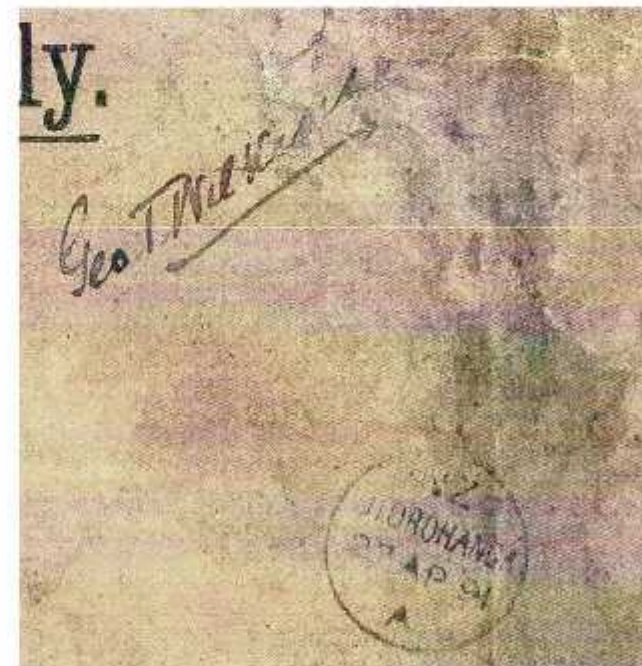
TENDERS are invited for the ERECTION

With the Post Office open in 1885, the Land Court in 1886 and the Railway in 1887, Otorohanga became the home of Government Services and the Native Land Court.



A Linen-backed **ON PUBLIC SERVICE ONLY** envelope 250mm x 375mm with free franking signature "*Geo T Wilkinson*" and very faint Land Court oval marking with manuscript date "*27.4.91*" and Otorohanga "A" Class datestamp 27 AP 91. Auckland "A" Class 28 AP 91 - by train then by ship to Wellington. Addressed to Under Secretary Native Department, Wellington

[Original in exhibitors hands]



Free-Frinking Privileges were available to Government ministers and Government Department officials.

"*Geo T Wilkinson*" was an official for the Native Office for Auckland and the Waikato from 1885 acting for the Crown in land purchases. He later lived in Otorohanga

## Maori Council Maniapoto District

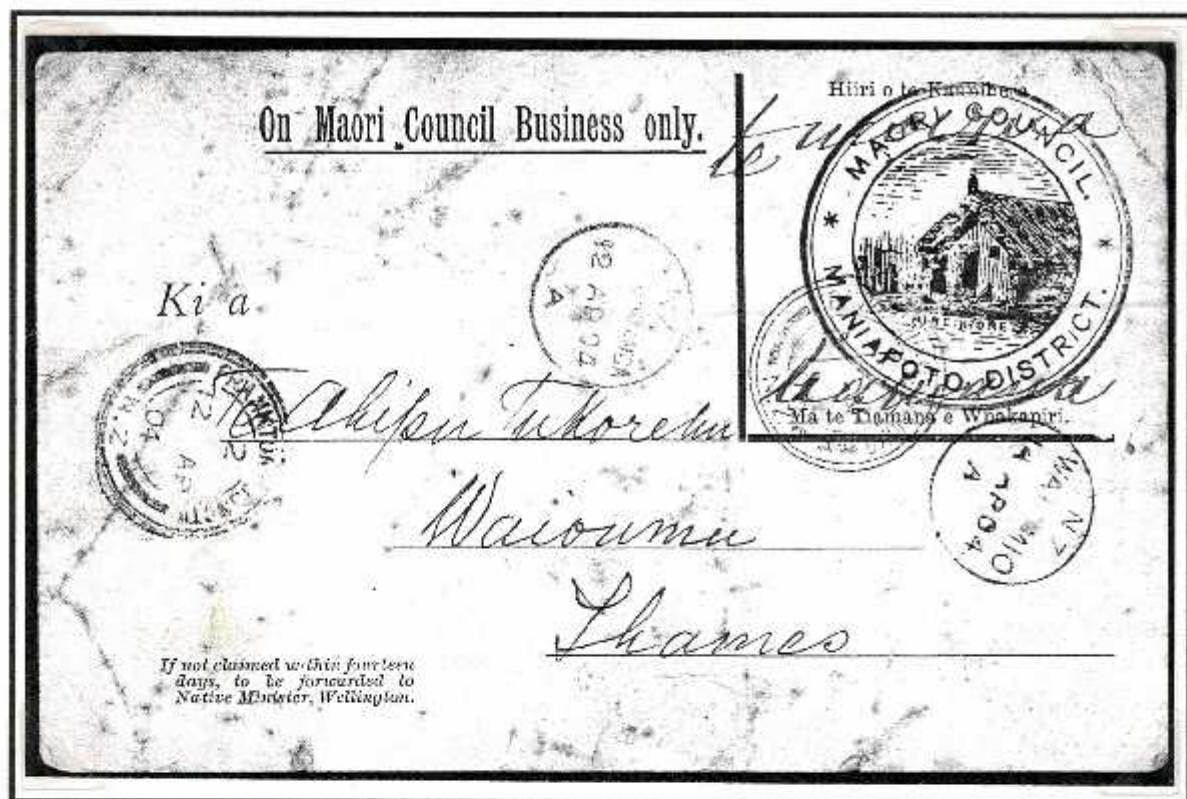
Under the **Maori Council Act 1900** established 22 Maori Council's. These were set up to deal with all aspects of native affairs and established bylaws. The Maniapoto Council gave authority to the sale or lease of sections in Otorohanga - 200 were released in 1902.

From **February 1, 1902**, authority was granted to the Councils to send letters free of postage. These envelopes or postcards were impressed with the **Seal of the Council in blue** and the Chairmen were required to **sign their names**. This was abolished in 1905. For the **Maniapoto District Maori Council** this was **Chairman Te Moerua Natanahira**. [From Hangatiki]

Photocopy of envelope from the Henri Dumas Collection Sale in 2000 - estimate £3000.

On **Maori Council Business only** postcard [4000 printed] from Otorohanga to Waiomo with **MAORI COUNCIL MANIAPOTO DISTRICT** seal [in blue] and signature of Chairman **T Natanahira** with printed details on the back with some details of Maori Council meeting.

**Otorohanga "A" Class 12 AP 04**; Frankton Junction "H" Class 12 AP 04. Travelling Post Office Waikato "H" Class 12 AP 04, received Waiomio 14 AP 04.



The Maori Council for the Ngati Maniapoto Maori Council District has fixed the Registration Fee for Dogs within the said district for the year 1905 as follows:—

For every sheep, Cattle, or Rabbit Dog, 2s 6d each

For every other dog, 3s each

The above-named persons have been appointed Registrars, and the houses opposite their respective names, Registration Offices, where dog collars can be obtained.

TE MOERUA NATANAHIRA, Chairman.  
Tamana Maniapoto Kaitiaki Maori.

Otorohanga, Mahe 13. 19 5.

The by-laws of the Maniapoto Maori Council, contain some features of public interest. Any tohunga is prohibited from causing a patient under his treatment to bathe in cold water, and from charging for his services. The maximum penalty for a breach of these by-laws is £10. It is also provided that whenever, on account of the practices of any person alleged to be a tohunga, he gathers a following and establishes himself in any kainga, or travels from one kainga to another with such following, so as, in the opinion of the Council or of any Village Committee, to cause serious inconvenience to the inhabitants of any kainga, or to any of them, by causing waste of food or substance, or in any other way, the Council may direct such tohunga to desist from such practices, and if he persists the Council may impose a penalty not exceeding £50. The Council may grant a license, after full inquiry, to persons skilled in the use of Maori herbs or wairakau for medical purposes, to have force only within the district. Sales of gifts of tobacco in any form to Maoris under 15 years are punishable by substantial fines, and children who are found smoking will also be dealt with. A fee of £5 is to be paid for the privilege of establishing a billiard-table in a Maori settlement. Fines will be imposed on all persons who gamble in a Maori village, and the owner of the house will also be punished. There are also stringent regulations with the object of preventing drunkenness amongst the natives.

Nelson Evening Mail September 1901

## Otorohanga Railway Station

By **April 1887** there was a station building on the west side of the railway line, and by 1896 a platform, 12m x 9.1m goods shed, loading bank, cattle yards, and a passing loop for 31 wagons. There was a Post Office at the station from 1893 to 1908 until this was transferred to a temporary premises while a new permanent office built. In **November 1910** the old station was moved to the town side of the line and the goods shed was moved near the old station site. This is useful in dating photographs. On 17 December 1923 the station burnt down.

The current station building opened in 1924.



Left: Annotated *"At Otorohanga Station 1906"* Right: with *"19 Aug 1908 First Train Wellington to Auckland went at such a speed that we could not see a face"*



Real photo undivided-back postcard, no printing details  
"OTOROHANGA N.Z."

View from the hill looking south with NIMT at left and Maniapoto Street

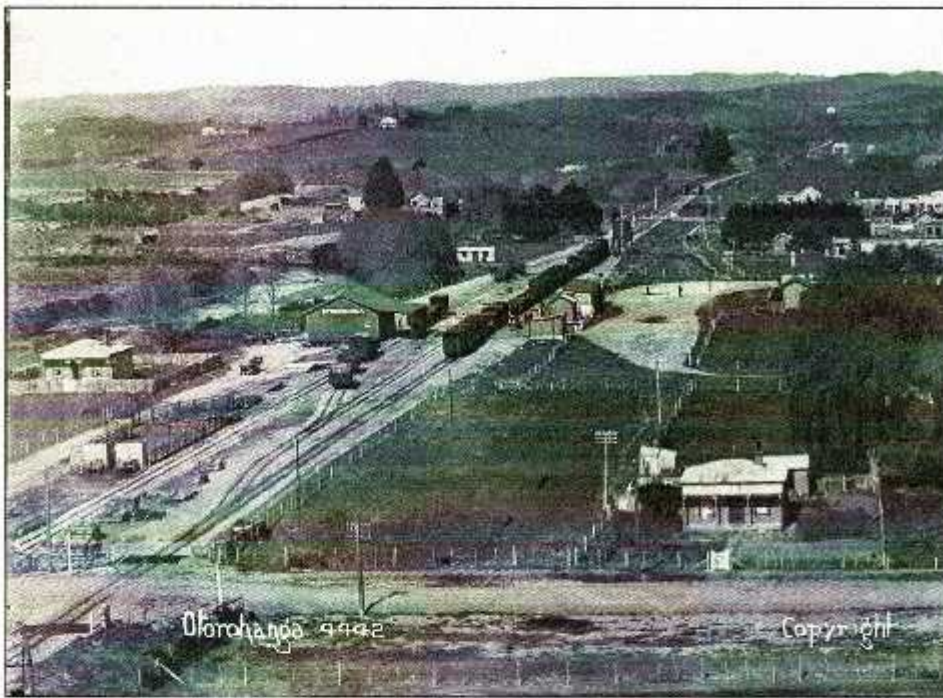


Card written **January 5th 1911**, Message in part reads:

*"This is a photo of Oto., but it was taken before the station was altered, it's a fine up to date station & yard now, the goods shed has been shifted to the other side and the office on the town side of the line."*

*"Don't think that is a lake in the front, for it is only a big puddle hole on the side of the road. You can see the river Waipa at the back of the station."*





Left: Photograph of Otorohanga with railway Station on town side and good shed on the other side of the railway line - after November 1910.



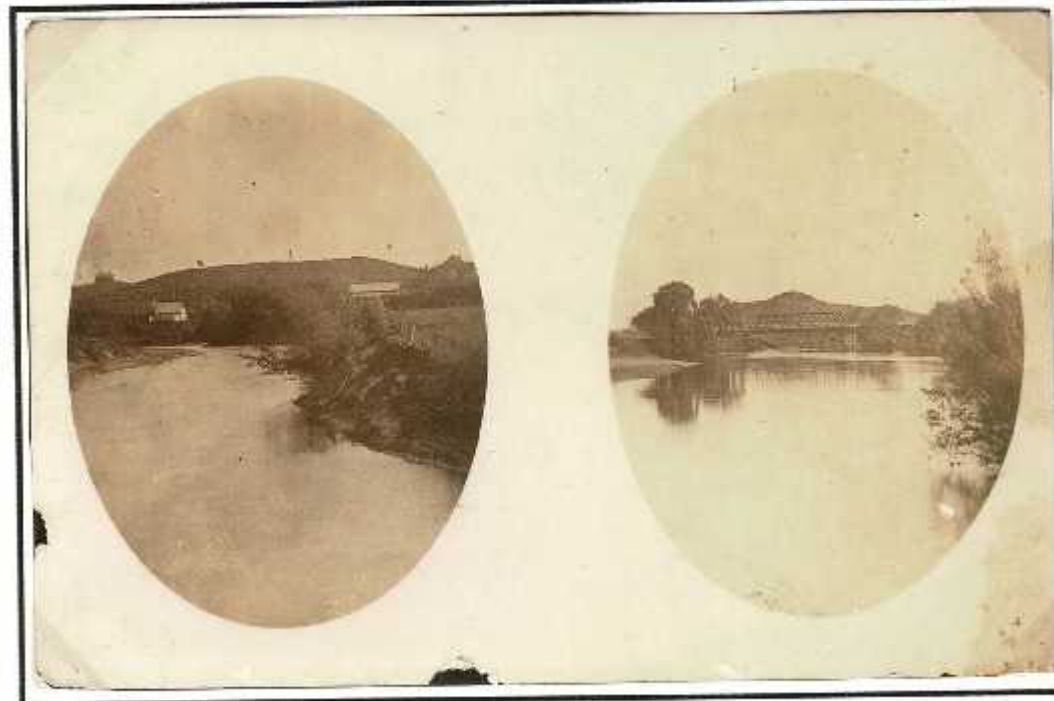
Above: Otorohanga Railway Station - the new one built in 1924

Below: Dated 1921, this shows the original railway station that was moved in November 1910 with additions to the left [north] side creating an expanded railway office.



## Otorohanga Railway Bridge

This is the bridge over the Waipa River just south of Otorohanga township. Constructed in 1887, replaced about 1955. A popular subject for postcards.



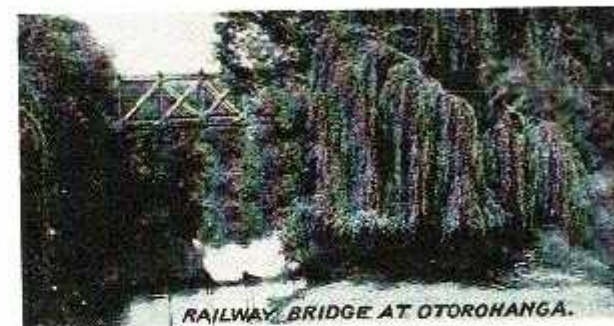
Above left: Photograph endorsed  
**"Waipa Bridge by Turners 1906"**  
[The Turner Mill was on the west side of  
the Waipa River south of the township]

Above Right: Undated postcard  
photograph with  
**"Waipa River Scene and Railway  
Bridge"**

Left: Real Photo postcard **"Bridges &  
River Otorohanga"** no details.  
Mailed from Otorohanga 3 MY 11



to **"Kihikihi via Te Awamutu"**  
[mail was taken by Train and resorted at Te  
Awamutu - to Kihikihi 4km south



2 of the 12 small illustrations in a "Pocket  
Novelty card" featuring the  
**"Railway Bridge at Otorohanga"**  
The card and illustrations by  
**F W Whyte, Stationer of Otorohanga.**

The card is undated but is after November 1910  
as the railway Station is on the town side of the  
railway line.



Left: **Real Photograph Postcard**, no details. Pre-November 1910 as Railway station is on the East of the railway line. Poplar tree on right

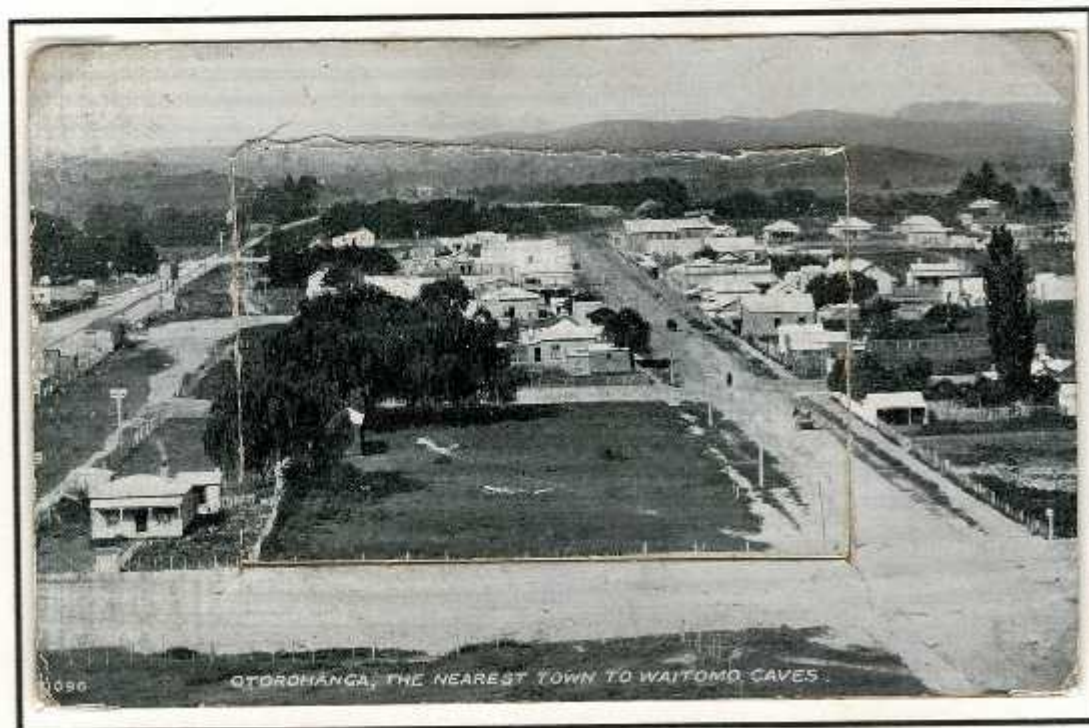
Below: **Real Photograph Postcard**, no details. Pre-November 1910. Maniapoto Street is metalled, Poplar tree on right



Message [in part] *"This is a photo of Otorohanga taken some time ago. The place has grown considerably since this was taken. Hope you have not got the [small box] as the Maori says. We have had them isolated for weeks but the scare is off now" .... "Well the passenger train is due here now so I will close."*

#### Novelty Postcard

**"Otorohanga, The Nearest Town to Waitomo Caves."** with 12 small photographs inside, undated but railway station is on the Town side of the railway line so after November 1910. Poplar tree on the right. 12th photo below



OTOROHANGA, THE NEAREST TOWN TO WAITOMO CAVES.  
11097.

Published by F. W. WHYTE, Stationer, OTOROHANGA

## Otorohanga General View Postcards:

These views are from the hill to the north looking south over the township with the **railway line** on the left and the main street - **Maniapoto** - to the right. Two features assist in the orientation - the **poplar tree** and the impressive "**Quin House**" on what became Ranfurly Street - this is still lived in.



Real Photograph postcard - **OTOROHANGA** - no print details - sent from **Otorohanga 22 DE 10** to Tairua received 23 DE 10. Shows the **Quin house** centrally and the **poplar tree** [without leaves at far left]

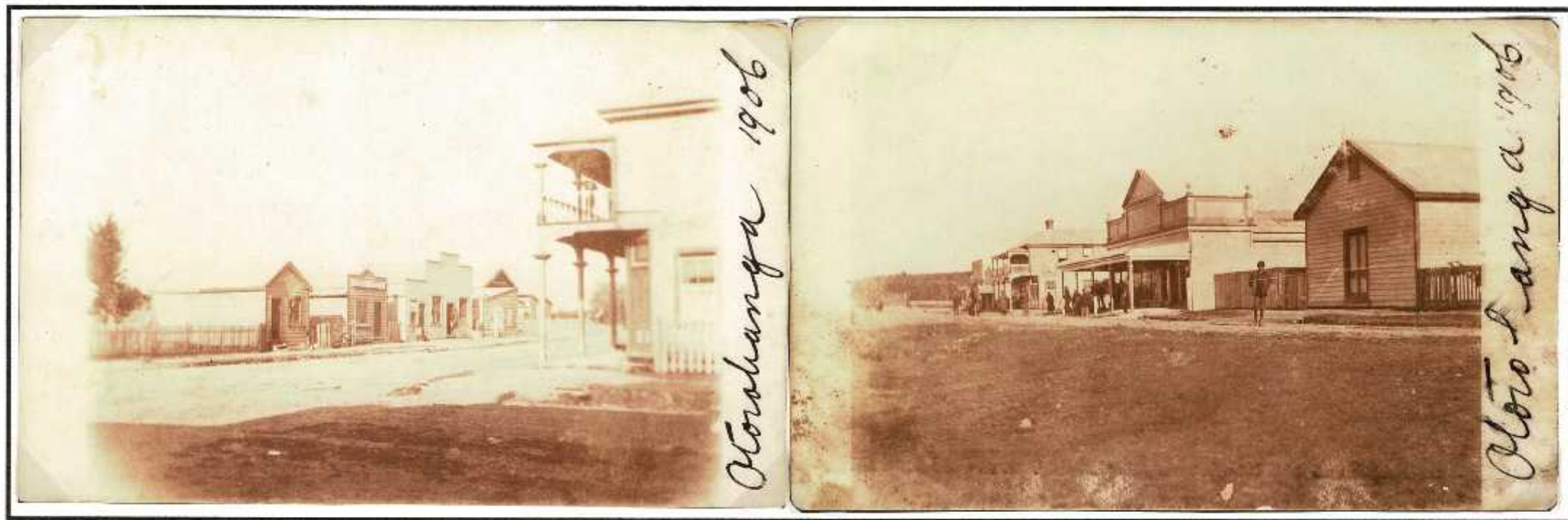


Real Photograph Postcard "**Otorohanga F.G.R**"  
**F G Radcliffe** was one of New Zealand's most accomplished photographers and his postcards are of the highest quality.



Sepia copy of Postcard "**4180 Otorohanga. F.W.W.**"  
 The road in the foreground was the route from the North  
**F W Whyte** was a stationer in Otorohanga 1900-1914

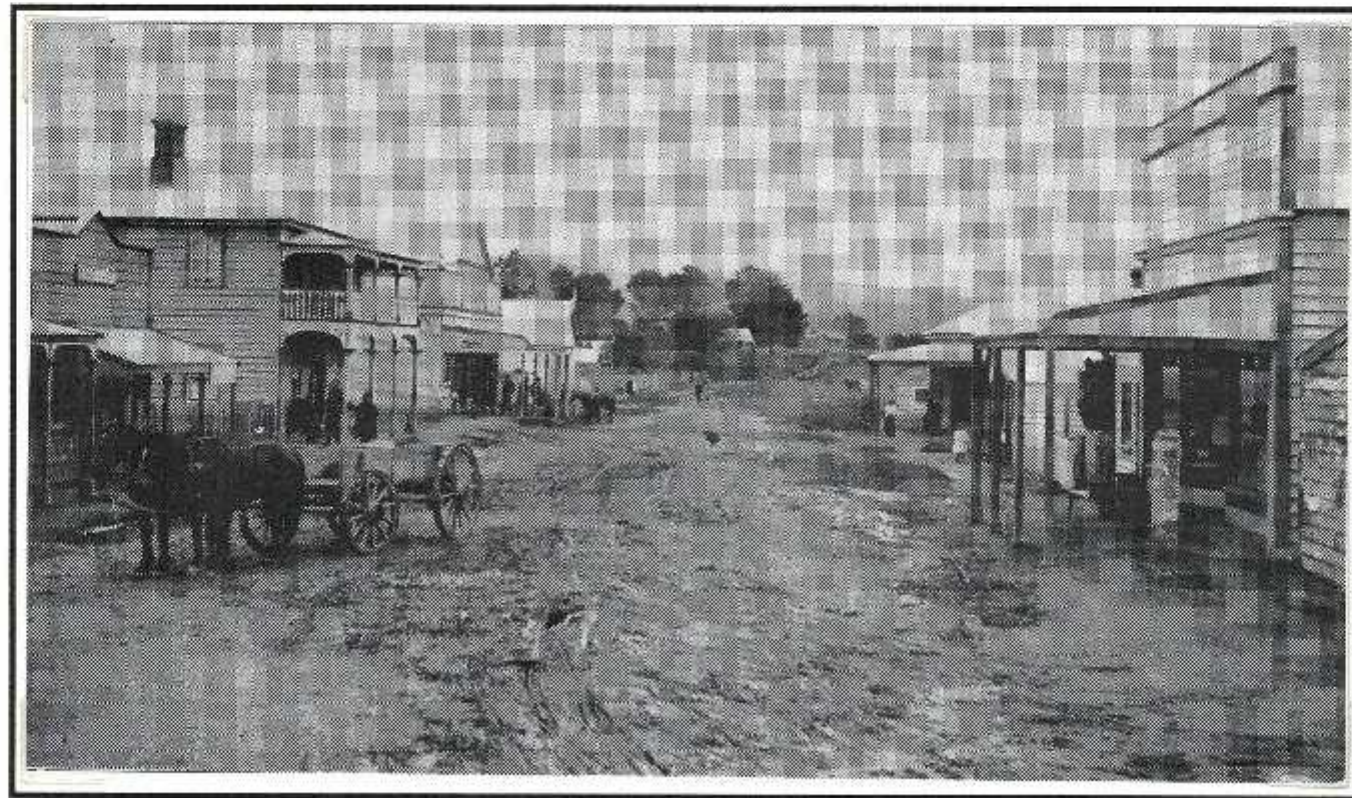
Otorohanga Street Scene Postcards: Tuhoro Street



Two sepia photographs both endorsed "*Otorohanga 1906*"

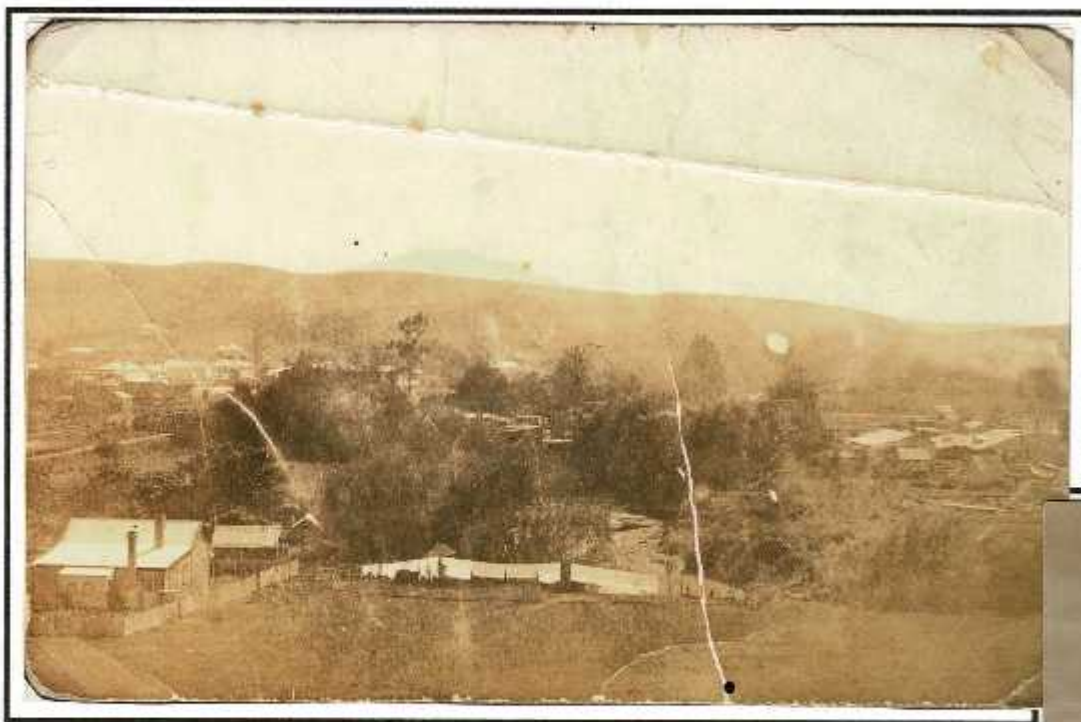
**Left:** view Tuhoro Street towards the railway, right foreground is the Hotel on the corner with Maniapoto Street.

**Right:** view Tuhoro Street towards the railway showing Turner's Hall, Green & Colebrook Store, Hotel - Otorohanga House.



**Tuhoro Street** from Station end.

Otorohanga House [Hotel] at left then Green & Colebrook Store across Maniapoto Street. The new Post Office was to be built in 1909 the other side of the Johnson Store.

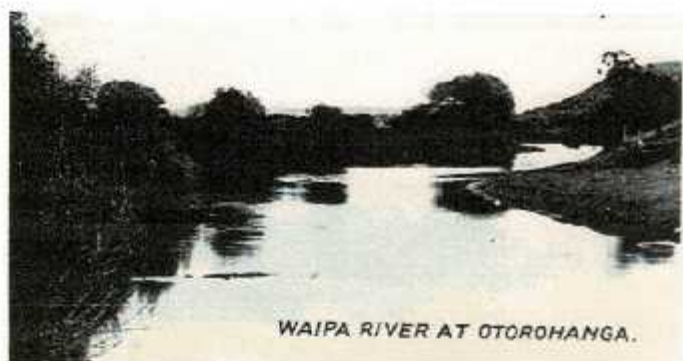


This photograph is annotated  
*"View of Otorohanga from Nurse Home 27 July 1910"*

It is a view looking north across the township from south of the Waipa River. The railway line and railway bridge are at the left and Ellis & Burnand's sawmill is on the right

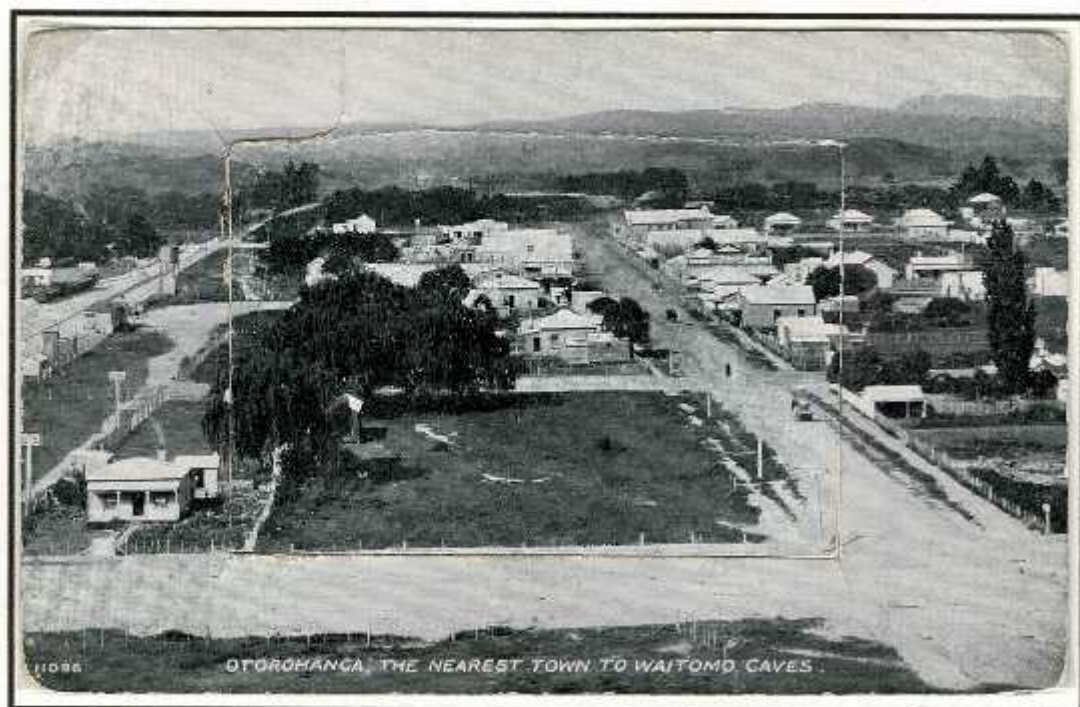
Peal Photo Postcard *"Waipa River Otorohanga 9990"* Produced by W.T Wilson, Remuera, Auckland who started printing real photo postcards in 1910, sent in envelope with impression of Otorohanga "C" class datestamp [issued November 1911].

Message reads *"... This is just beside the town and where we catch all our trout in the same river..."*



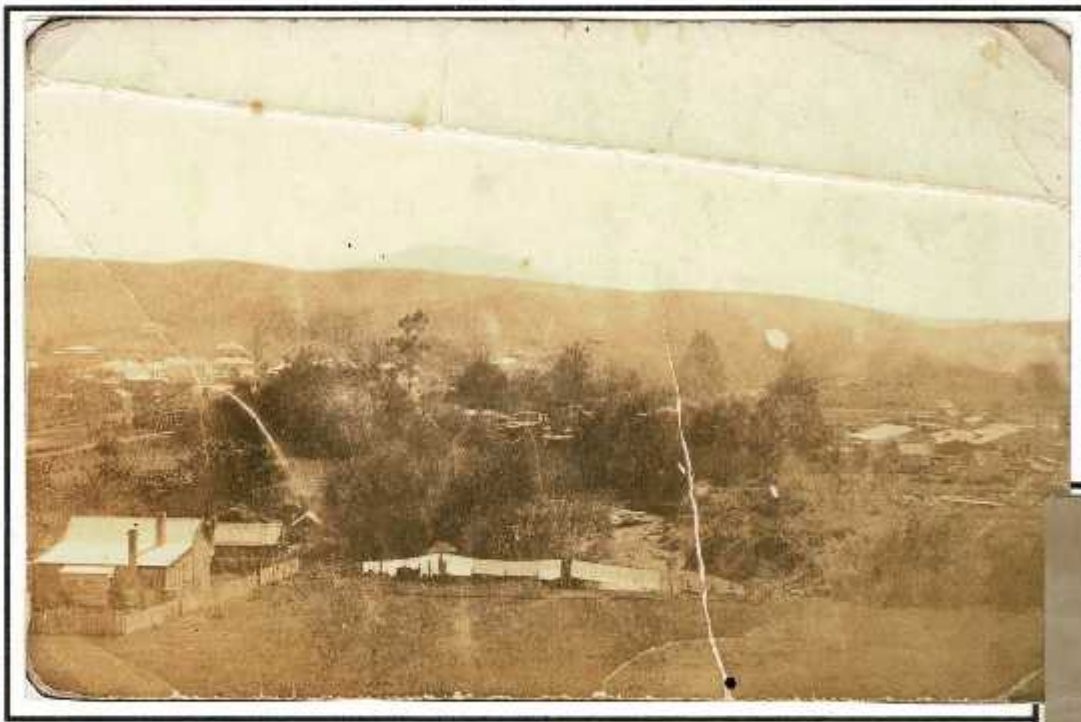
WAIPA RIVER AT OTOROHANGA.

Similar view from Novelty Postcard from F W Whyte



2 of the views inside the Novelty Postcard [Dedicated 24/6/09]

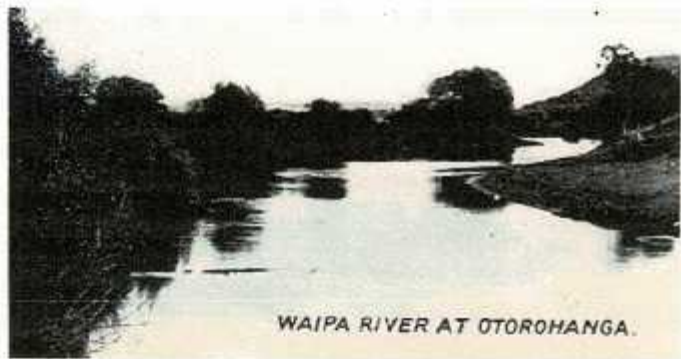




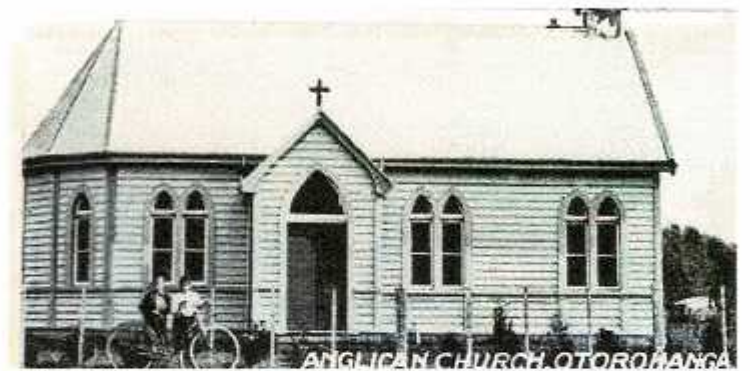
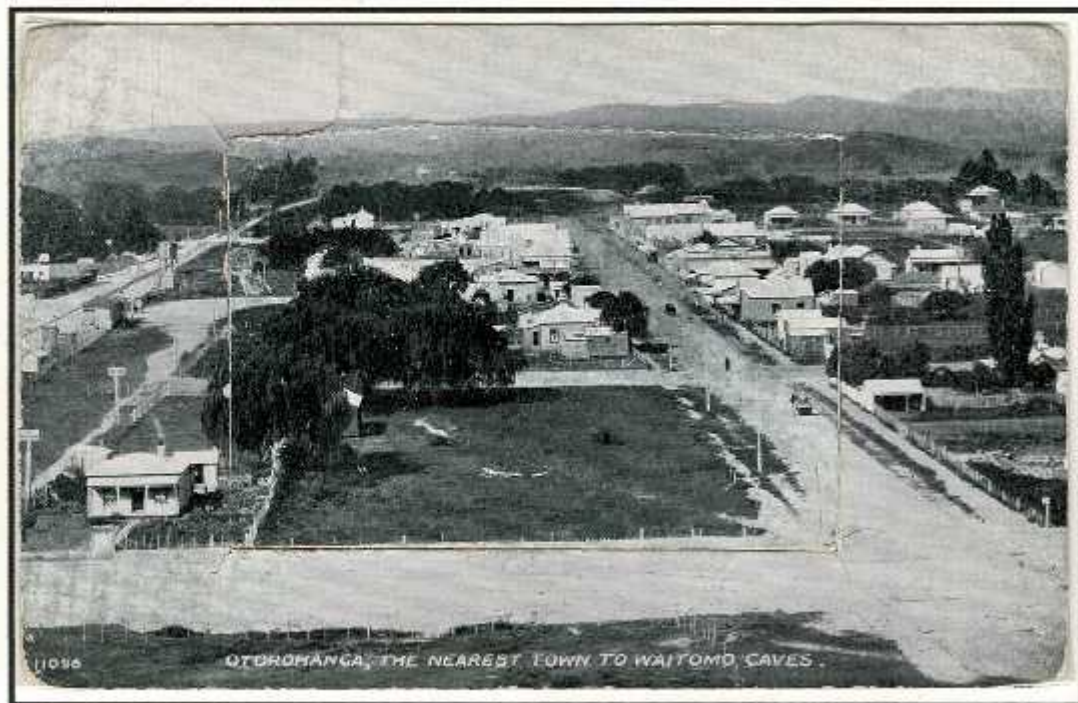
This photograph is annotated  
*"View of Otorohanga from Nurse Home 27 July 1910"*

It is a view looking north across the township from south of the Waipa River. The railway line and railway bridge are at the left and Ellis & Burnand's sawmill is on the right

Peal Photo Postcard *"Waipa River Otorohanga 9990"* Produced by **W.T Wilson**, Remuera, Auckland who started printing real photo postcards in 1910. sent in envelope with impression of Otorohanga "C" class datestamp [issued November 1911].  
 Message reads *"... This is just beside the town and where we catch all our trout in the same river..."*



Similar view from Novelty Postcard from F W Whyte



Otorohanga Business Buildings:

**O**TOROHANGA **S**AWMILLS

BEST PLANT IN THE WAIKATO  
BEST TIMBER IN THE WAIKATO.

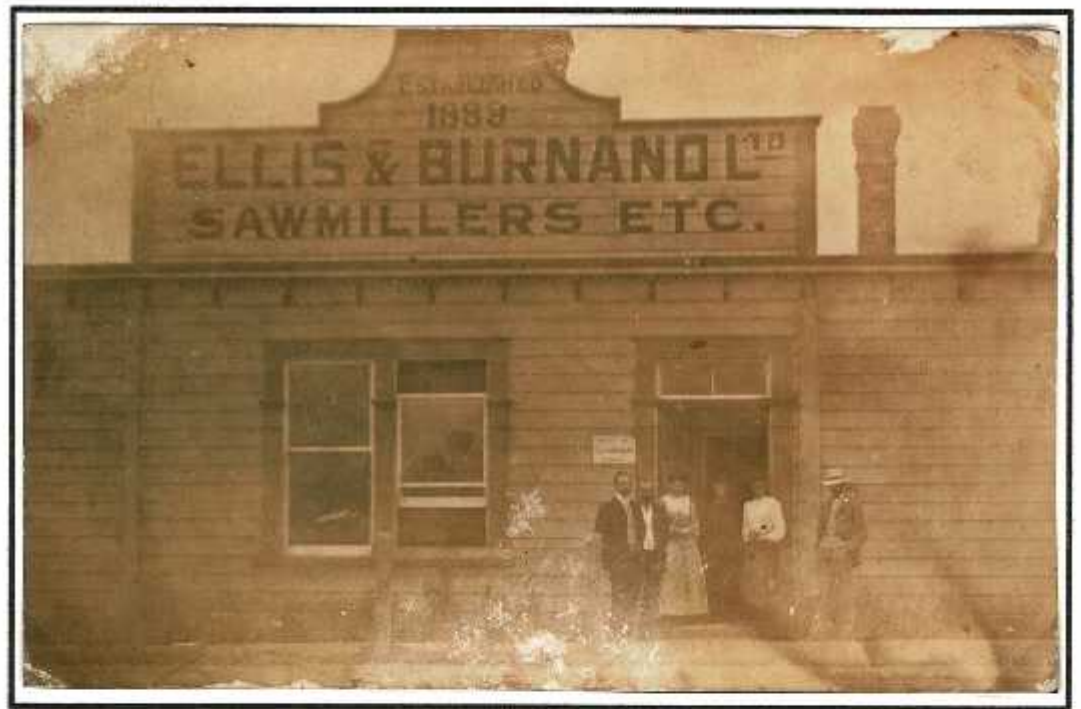
**NO MORE SWAMP TIMBER!**  
"YELLOW-HEART" KAHIKATEA  
ALL TIMBER FROM DRY LAND

Can cut the longest and plane the  
broadest of any mill in the district.

**RIMU & KAHIKATEA!**  
ALL KINDS OF DRESSED STUFF

**ELLIS & BURNAND.**

Ad Waikato Times 1894

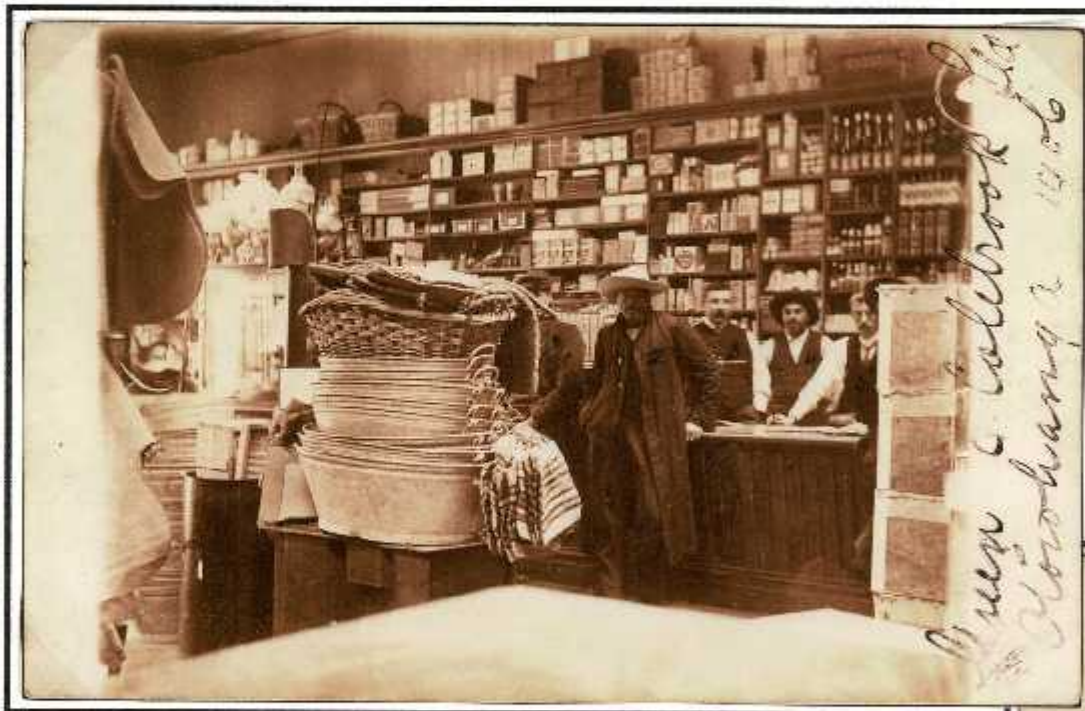


Sepia photograph "Ellis & Burnand Ltd Sawmillers etc."  
"Established 1888"

John Ellis arrived in Otorohanga in 1885 - he was a **merchant** opening a store and owned the building that became the first Post Office and was the first **Postmaster**.

The store was taken over by Robert Green under the name of Green & Colebrook 1906. It was situated on the SW corner of Maniapoto and Tuhoro Streets.

Ellis joined with Burnand in 1888 - **Ellis & Burnand** to set up a **sawmill** in 1890 - with a tramway along the Waipa to the Kahikatea stands at Tahaia and Otewa.



Sepia Photograph annotated "Green & Colebrook Otorohanga 1906"

**Green & Colebrook** set up "Universal Providers" stores in Te Kuiti, Hangatiki, Otewa, Pippio, Ohaupo, Huntly and Ngaruawahia. The business was sold to **Farmers Trading Company** in 1918

Sepia Photograph of **Horner & Johnson Settler's Store** - this was on Maniapoto street near Tuhoro Street. The new Post Office was built adjacent in 1909 and the store was then under Johnson.







Scan of part of postcard with **Hotel** at right centre  
[pre-November 1910 as railway station on East side

Sepia photograph annotated "*Otorohanga*" on the front and dated "*1 October 1906*" on the back.

This 2-story Hotel was built on the corner of Tuhoro Street and Maniapoto Street about 50 yards from the Railway Station. It was built about 1890 by J Ormsby and had a number of managers over its life. A liquor licence was applied for in 1892 and there was much discussion but eventually it was declined as the King Country had prohibition on alcohol.

The Hotel was refurbished in 1911 and renamed as "*Otorohanga House*"

There was a clearing sale of the contents 17 September 1926. Otorohanga Building's Limited Company was formed with the intent to develop the site with a modern 2-story hotel and shopping centre. That never happened.

### Otorohanga House

Cutting from **Wises Directory 1912** announcing renovations and attractions.

Proprietor **W H Clayton** [1911-1914]

He died in Waikato Hospital after a long illness in December 1914.

# OTOROHANGA HOUSE

ADJOINING RAILWAY STATION, OTOROHANGA (KING COUNTRY).



This House has been thoroughly renovated and furnished throughout. Commercial Travellers and Tourists will find all the comforts of a home at the above well-appointed establishment. Acetylene lighting throughout. Hot, cold, and shower baths. Fishing and shooting within easy distance. Direct route to Waitomo Caves, over newly opened road. Telegraphic Address: "Clayton." Letters and telegrams receive prompt attention. Cuisine the very best. Telephone No. 8. **W. H. CLAYTON (LATE OF TE KUITI), PROPRIETOR.**

**Flooding:** Severe flooding occurred throughout the King Country in January 1907 and it was reported that they were the worst in the Waikato area since 1875. Flooding occurred again in October 1907 and in January 1908.



Photo annotated "Waipa in Flood at Otorohanga January 1907"

Our Otorohanga correspondent wired yesterday as follows: "Messrs Ellis and Burnand's mill has been damaged to the extent of £200.

The line is washed out a-half a mile from here and is under water for five miles towards Hangaiki.

A settler, named Ranby, has lost close on 100 sheep.

All crops are totally destroyed.

King Country Chronicle 18 Jan 1907

The local creamery was opened last week by the New Zealand Dairy Association, with Mr Osmond in charge. I understand there are about twenty suppliers and everything is turning out up to expectations. Now that dairying has commenced in earnest there is every inducement for the settlers to go steadily ahead confident in the knowledge that a steady and increasing income is to be derived from every extra acre brought into grass.

King Country Chronicle  
18 November 1909

A "Chronicle" representative paid a visit to Otorohanga the other day, and took the opportunity of inspecting the new creamery, which has been in operation since November last. Having a strong conviction that of a well-organised dairying industry the Waitomo county stands in greatest need, it was with great interest the writer examined the plant and methods at the Otorohanga creamery. It is capable of affording many useful lessons to Te Kuiti settlers, as it shows, in a concise form, just what can be done when a district shows itself in earnest, and desires to have its own creamery.

King Country Chronicle  
16 February 1910

Upper view of *Waipa River in Flood and Waipa Bridge* - dated 19 December 1907. Waipa River was not bridged until early 1907



Sepia Photograph of the opening of the **First Otorohanga Creamery factory** in 1909 manager Herbert J Osmond.

An entry in the King Country Chronicle 16 August 1913 on the opening of a Creamery at Kio Kio mentions that the Otorohanga Creamery was soon to close with some suppliers likely to change to the new factory

## The 1958 Flood:

**The 1958 Flood is widely regarded as the most significant flooding event in history of both the Otorohanga and Waitomo Districts.**

The 1958 Flood which peaked on 24th February is one of the most significant natural events in the history of the Otorohanga and Waitomo Districts. Many residents still recall the '58 Flood, when rivers rose in both Otorohanga, Te Kuiti and the surrounding townships inundating homes and businesses. The Waipa River at Otorohanga broke out of its banks into older channels flooding several streets and damaging many houses and businesses.

The flood began with a week of heavy rain made worse by a torrential downpour on Sunday, 23 February. By noon on the 24th the Mangaokewa River in Te Kuiti had broken its banks by the rubbish tip at the foot of Awakino Rd, and water was flowing down Rora and Taupiri streets by 1pm. Although the rain began to ease by 3pm that afternoon, the water continued to rise until 11pm and practically every shop and many houses were awash. Mangapehi and Benneydale were left isolated and without power, as were several other small communities including Hangatiki and Piopio.

**Aerial Photograph looking North - "Rodney Hiskins Photographer Otorohanga."**





Real Photo Postcard "**Public School Otorohanga**" no details.  
Undivided back [pre 1907]

The first school in the King Country was established at **Kopua** at the end of what is now Cannon's Road] in 1886. It was a Native School attached to the Mission Station established in 1840. This ran into staffing problems in 1909.

The first school in Otorohanga was set up in **1890** and was taken over by the Auckland Education Board from the beginning of **1895**. In 1903 a new classroom was added. In 1906 the roll was 130.

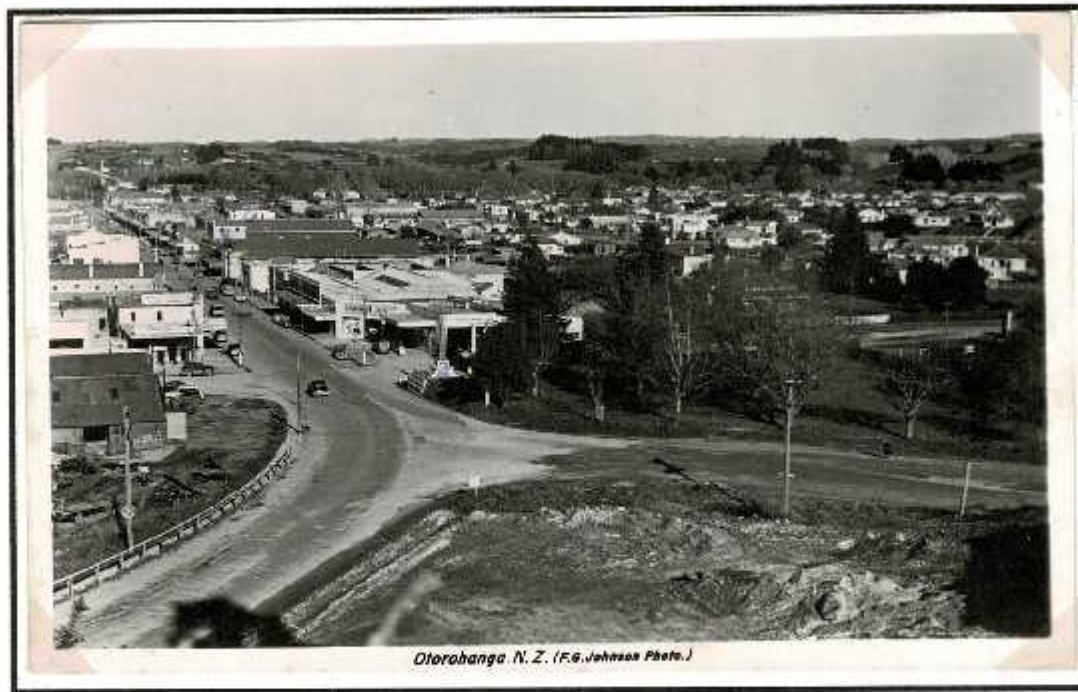


A "**glitter**" postcard - a very popular type with greetings of various kinds.

*"A Happy Christmas from Otorohanga"*

on divided back postcard - no details

Message *"To Dolly with Love From Lily"*



Otorohanga N. Z. (F.G. Johnson Photo.)

**Upper:** View from above the Ormsby House looking down with Maniapoto Street to the left and Kakamutu Road to the right.

Message reads: *"This is a view of Otorohanga, the near x is the first World War Memorial with park. Second, [x] down the street is the Town Hall, where I work and the o just on, is the Movie Theatre where I also work, I am doorman 6 nights a week and caretaker during the week.*

*Otorohanga has a population of nearly 2,000 surrounded by fine farm land, chiefly dairy country. Farms average 100 acres, and carry about 70-80 cows with young stock."*

**Below:** View across Otorohanga from Gradara Avenue.

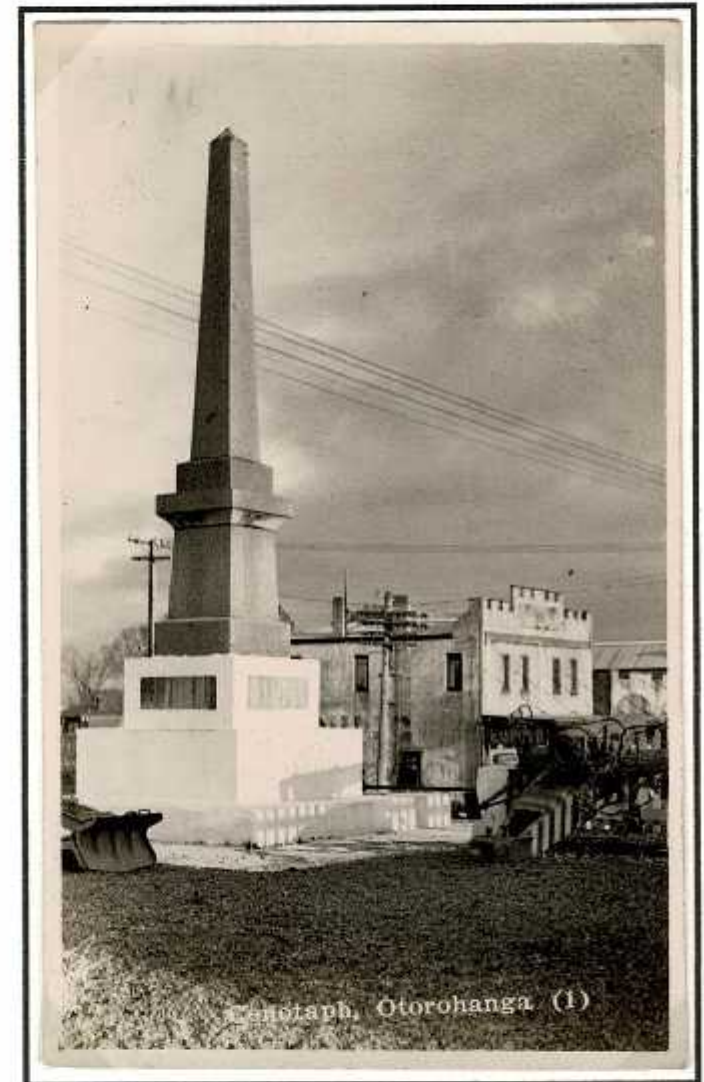
Message reads: *"Another view of Otorohanga x is Catholic Convent. I am a member of the Presbyterian Church. O is the Masonic Hall. My home is just behind that tree, on right of mark!"*



Otorohanga N. Z. (F.G. Johnson Photo.)

Real Photo Postcards "Otorohanga N.Z. [F G Johnson Photo.]"

**F G Johnson** was a chemist and photographer - the Company was inaugurated 14 November 1950 and was bought out in 1973 by John Miller who changed the Company name..



Cenotaph, Otorohanga (1)

Real Photo Postcard "Cenotaph, Otorohanga"  
printed details on back "Nash Photo Auckland N.Z."

Nash was active in 1937

## Otorohanga Postal Markings

**Obliterator:** Volume III of *The Postage Stamps of New Zealand*, Page 47-47, recorded: "*the following obliterations of the type 37, 38 or 39 are known to be used:- ... It lists "94 Otorohanga"* It gives no date for this usage.

The postal card shown earlier dated 1893 appears to be cancelled with this obliterator "94"

The A over number obliterations were issued to offices in the Auckland Postal District about 1882. As the Otorohanga Post Office did not open until 1885 it did not receive an obliterator of this type.

### "A" Class datestamp:

The Post Office opened 10 September 1885, Telegraph facilities were added 10 February 1890 and **Money Order & Savings Bank [MO&SB]** facilities were added on **1 November 1890**. Because of the importance for accounting and audit, when MO&SB facilities were added a dated postmark was required. The earliest example known is **27 AP 91** on the OPSO envelope to the native Affairs in Wellington - shown earlier.

The datestamp was used on **all mail until November 1911** when it was moved to the **Counter**. An example is known **14 JA 35** in Post Office archives when a stock take of all Post Office datestamps was undertaken. It was replaced in **June 1939**.



Otorohanga  
16 MY 10  
to Rawene



Otorohanga  
23 DE 05 to Okete

Otorohanga  
16 SP 08 Local use





Otorohanga "A" Class 11 NO 05 to Tasmania via railway - sorted on the Auckland-Hamilton [Waikato] Railway Travelling Post Office receiving the "H" Class datestamp **Travg P.O Auckland 11 NO 05** that was used on the Mercer-Auckland section.

This RTPO was established May 19, 1901, the "H" Class datestamps were replaced in 1909 with one with "Waikato"



Inwards postcard "The Boating Lake, South Shore, Bridlington" mailed with 1d KGV definitive cancelled Bridlington 8 SEP 1933. Short paid [postcard rate was 1½d] **T 10** [10 centimes] applied. Addressed **"C/- The Post Office Otorohanga"**

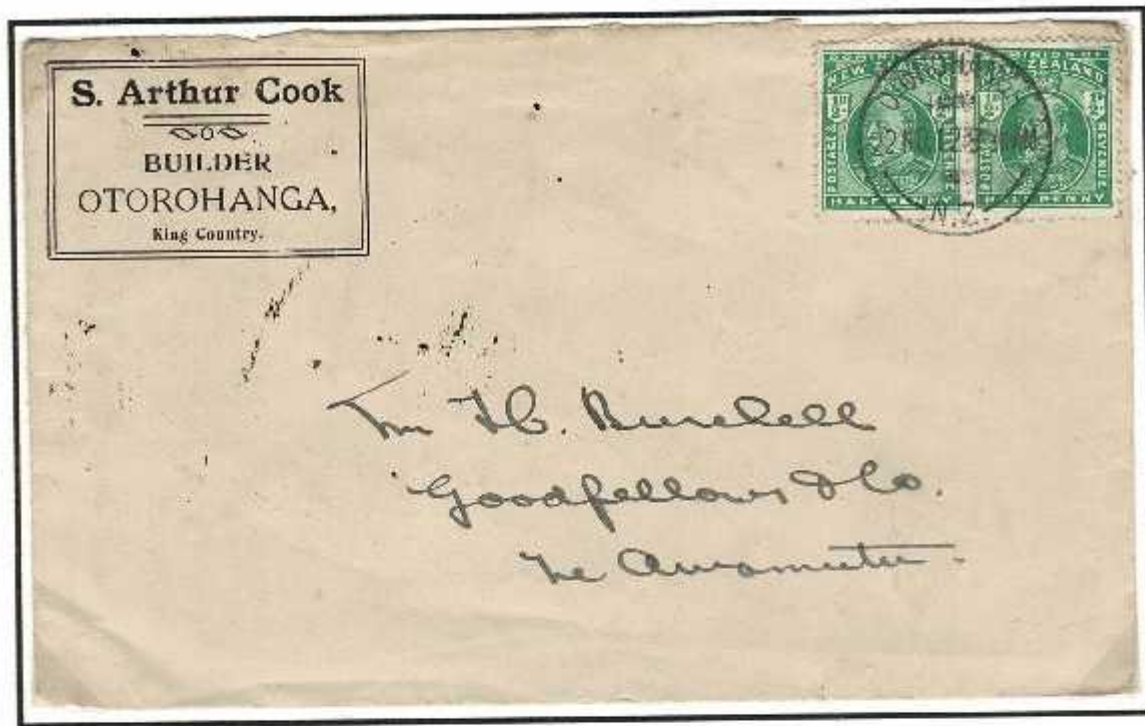
Received at Otorohanga and **"To Pay 1d"** stamp applied and fee paid with 1d Postage Due [design 1924-38 Cowan thick chalk-surfaced paper comb perforated 14 issued June 1928]. And cancelled with **Otorohanga "A" Class 17 OC 33** counter use]



### "C" Class 25mm Datestamp:

A proof impression of this datestamp is dated **2 NO 11 3.30PM** in Post Office archives. It was used in the **mailroom** and replaced in **November 1922**





**OTOROHANGA**  
**S. Arthur Cook**  
**Builder & Contractor**

Wishes to inform the residents of Otorohanga and surrounding districts that he is starting business as a joiner and contractor and builder. He has had extensive experience in England, America & New Zealand, and will guarantee a good class of work. Mr. Cook will shortly erect a workshop on site adjoining Mr Hood's wheelwright shop.

King Country Chronicle  
 June 1911

For Sale.

**£360** BUYS my large two-story workshop and store rooms, with two sections in main part of town, and nearest position to goods yard. S. Arthur Cook, Otorohanga.

King Country Chronicle  
 May 1919

**S Arthur Cook** arrived in Otorohanga in 1911, he sold his business in May 1919 and went farming initially dairy until 1924 then offered grazing. He was on the Honikiwi Ward in 1922. He moved to Hamilton in 1938 and is on record as producer of a show in 1939

Advertising envelope S Arthur Cook. Mailed 2 x 1/2d KE stamps cancelled Otorohanga "C" Class 25mm 22 NO 12 9.30am to Te Awamutu, received 22 NO 12 11.30AM - just 2 hours after mailing in Otorohanga - fantastic mail service by rail.

**"C" Class 32 mm datestamp**

Proof in PO Archives 1 NO 22 1.15AM. Used in the mailroom. Was damaged in August 1927. Relief datestamp known 13 AU 27. Replacement proof 23 AU 27.



**"C" Class 30.5 mm datestamp**

Proof in PO Archives 23 AU 27 2.50PM. Used in the mailroom. Impression 14 JA 35 in archives. Replacement "C" Class proof 25 NO 39





STATEMENT OF TELEGRAPH BUSINESS at *Whanganui* for the Period *17th January, 1934*



Sheet with Statement of Telegraph Business at *Otorohanga* for 17th January 1934. with "C" Class 18 JA 34. 10-AM

(To be prepared in duplicate, one copy to be retained for twelve clear months as a local record, and the other to accompany the messages to the Clearing House, G.P.O.)

DEBITS				CREDITS			
Date	Particulars	Amount	Date	Office of Origin	Telegram (Class number in)	Toll (Number of Calling Stn)	Amount

**FORWARDED MESSAGES**

Date	Total	G.T. (1)	C.O.T.	N.L.T.	P.T. (2)	Total (3)	U.M.P. (4)	Other Messages	Messages (5)
No.	Amount	No.	Amount	No.	Amount	No.	Amount	No.	Amount
17/1	43	3	14	15		107	4-6	11	12

TEL. 46 400 2/1/31-48



Confirms 93 outgoing tolls and 15 telegrams with revenue of £4-0-6d

Reused in 1935 from Chief Post Office Westport with Inspector's comment on **Inangahua Junction Post Office** about a work spring in the lead sealer advising a relief sealer would be sent and the broken one to be sent for repair.

Original on the back of sheet

"The Voice of Taranaki"

**2YB**

NEW PLYMOUTH-NZ

WAVE LENGTH 243.8 METRES 1230 KC

OPERATED BY THE NORTH TARANAKI RADIO SOCIETY INC P.O. BOX 141, NEW PLYMOUTH

OUTPUT POWER 100 WATTS

Thanks for your report of our transmission of 27/9/30 which we confirm. We are regularly heard all over N.Z. & Australia (except W.A.) & have been reported from Fiji & U.S.A. Hope we may continue to entertain you.

*Indricka Honey*

INLAND POST-CARD

Mr A.D. Hayward  
Oteawa Road  
Otorohanga

QSL card from 2YB New Plymouth machine cancel on 1/2d KGV post-card, addressed to Oteawa Road, Otorohanga with receiving datestamp **Otorohanga "C" 30.5mm 6 NO 30 8.20AM**. Mailroom datestamp used to confirm date as sending postal marking is unclear - as per Post Office Rules.

### "J" Class 34mm datestamp:

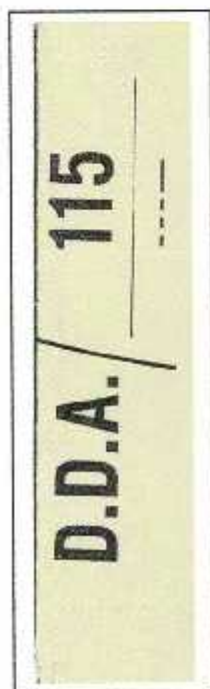
This datestamp has a proof impression in the PO Archives 13 JE 39. It replaced the "A" Class datestamp on the Counter and was replaced in September 1959 with a "J" Class 33mm datestamp.

Counter datestamps examples are less common than mailroom datestamps and often used for Registration.

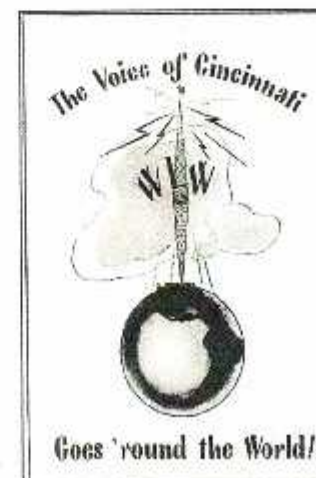


### "C" Class 34mm datestamp:

Proof impression 25 NO 39 4.30PM. Used in mailroom through to 1990's



Censored envelope Otorohanga "C" Class  
2 FE 43 2d correct foreign surface rate to  
Radio Station WLWO Cincinnati Ohio.



WLW was established March 2, 1922 - a  
50 KW radio station.



Miss A M Carey  
 4. Nurses Home  
 Waikato Hospital  
 Hamilton.



Carey

4. Nurses Home  
 Waikato Hospital  
 Hamilton



inford.

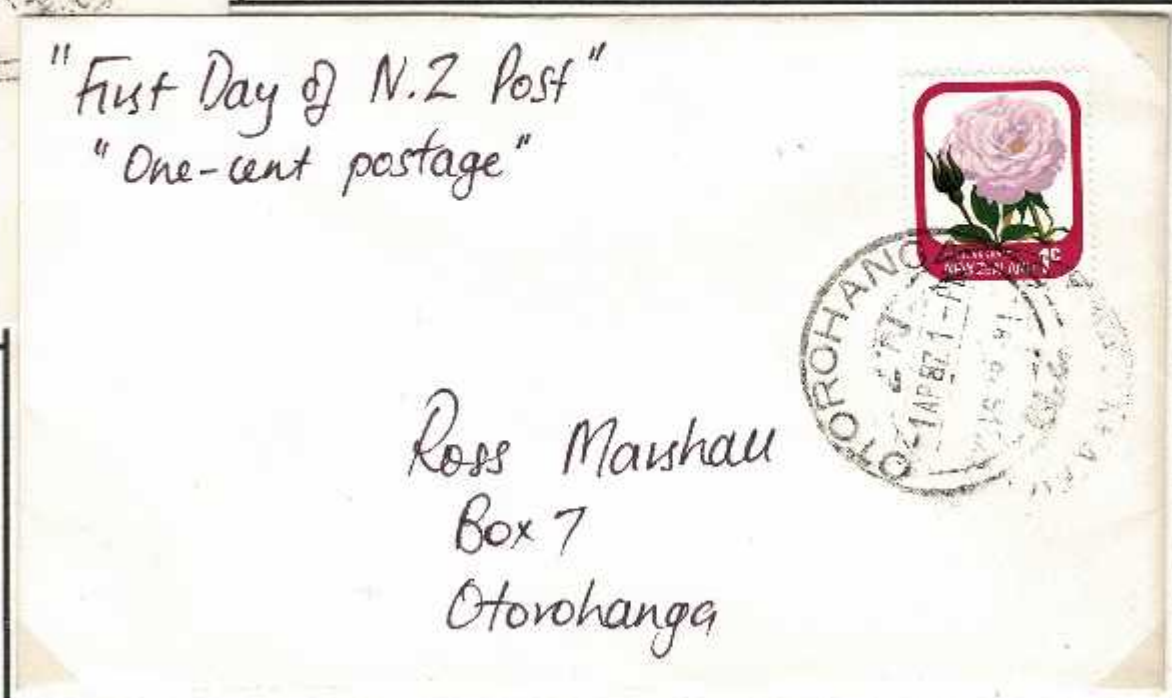
Whitakahu R.D.

Taupiri



"Last Day of New Zealand  
 Post Office"

A-R. Marshall  
 P.O. Box 7  
 Otorohanga



"First Day of N.Z Post"  
 "One-cent postage"

Ross Marshall  
 Box 7  
 Otorohanga

On 1 April 1987 the **New Zealand Post Office** was 'corporatised' and its core businesses split into three separate companies - Telecom, Post Bank and **New Zealand Post**. Each company was set up as a **State-Owned Enterprise (SOE)** and was expected to operate as a commercial entity.

As a commercial launch NZ Post promoted "**One-cent**" postage on **1 April 1987**



Philatelic Mail  
from Mrs Walker in Dunedin  
[one of the 3 pioneer woman  
postmark collectors from late  
1940's]

Otorohanga  
"C" Class 11 OC 70  
[mailroom] on stamps but  
"J" Class [counter] on the  
Registration label.



**"J" Class 33 mm datestamp:**

This was 'proofed' in Wellington 22 SP 59.9 - used on the counter replacing the "J" Class 34mm. It was in turn replaced in November 1977 "J" Class 29mm datestamp



Registered Letter Otorohanga Label N6B "J" Class 3 MR 76, redirected to Hamilton and "J" Class 4 MR 76, Postmen's Branch Hamilton with "No such street in Hamilton" and "Not known to Postmen Hamilton" markings with Octagonal Hamilton RLB 5 MAR 76 [Returned Letter Branch].

## "J" Class 29mm datestamp

This datestamp was 'proofed' at GPO Wellington 24 NO 77.8 and introduced for **Counter** use replacing the "J" 33mm datestamp. No relief datestamp in between. It was used until the Post Office was downgraded to Post Shop when all datestamps were replaced and mail was collected for sorting and canceling at the Waikato mail Centre. **Examples are uncommon.**

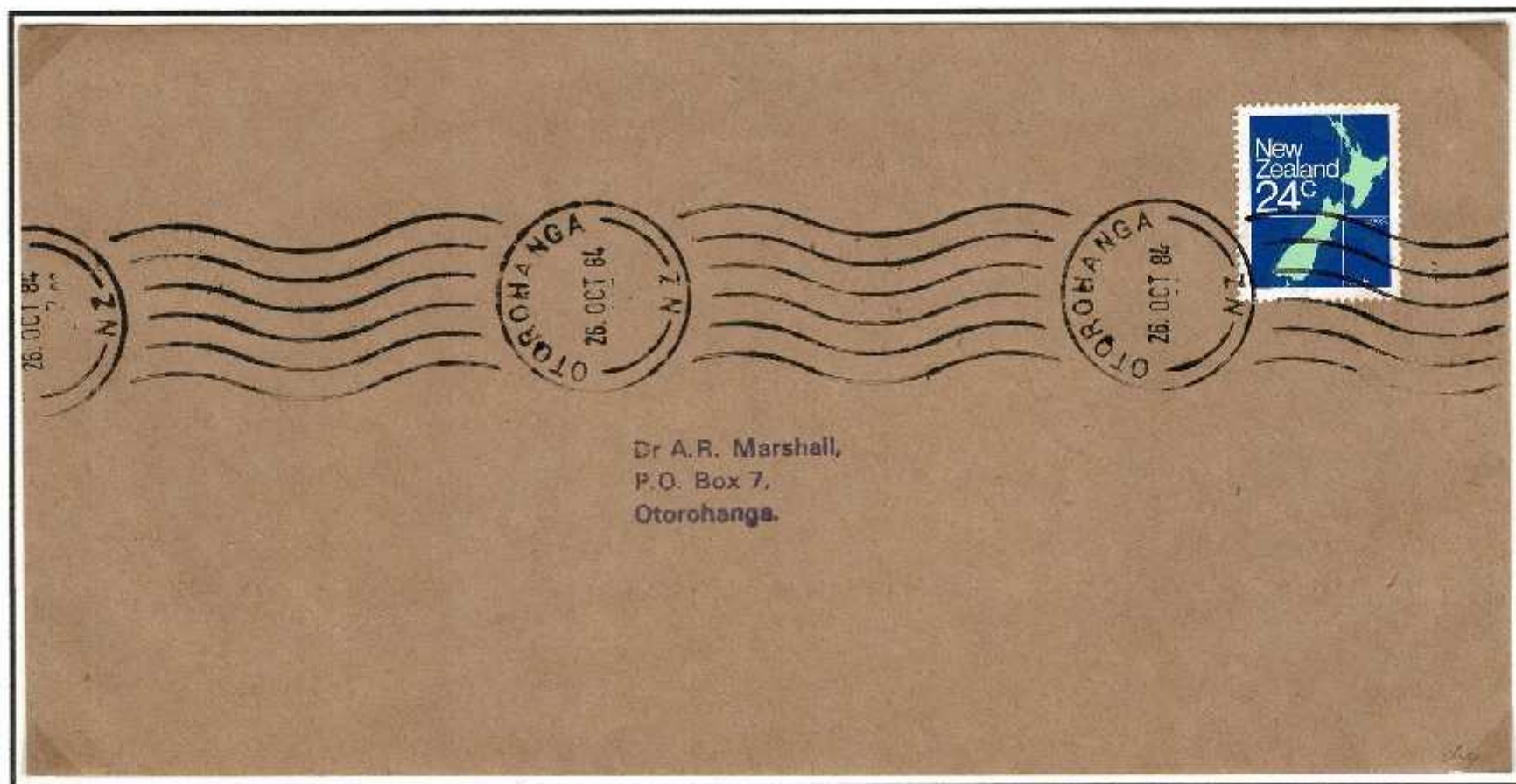
## Saville Continuous Roller datestamp

In 1946, Mr H J Saville, an officer of the Post & Telegraph Workshop in Wellington designed a hand-powered machine for use at smaller offices. These were manufactured at the Workshop and were canceling machines only and not fitted with slogans. Introduced at **Otorohanga October 1947** the design is of the Type 42 shown in Volume III of The Postage Stamps of New Zealand p165. **Examples are rare.** Replaced on 1984.



## Continuous Roller datestamp

A replacement continuous roller datestamp was introduced 26 OCT 84. Examples are rare.

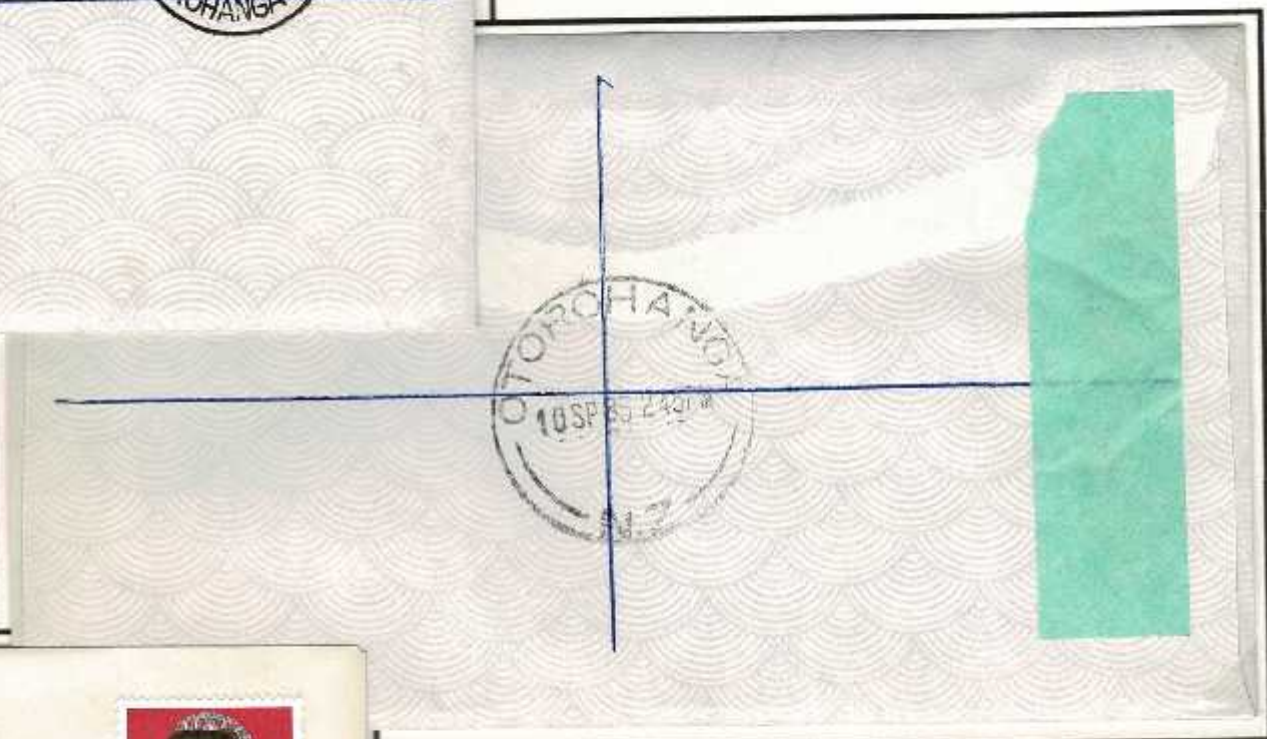


## Centenary Otorohanga NZ 10 SEP 1985

The Otorohanga Post Office was opened 10 September 1985 and New Zealand Post created a special commemorative datestamp for the occasion. Number of covers cancelled unknown but 5 Registered Envelopes recorded<sup>1</sup>



Centenary cancellation on Registered envelopes  
Numbers 436 & 437.  
Otorohanga "C" Class datestamp on back  
10 SP 85 2.45PM



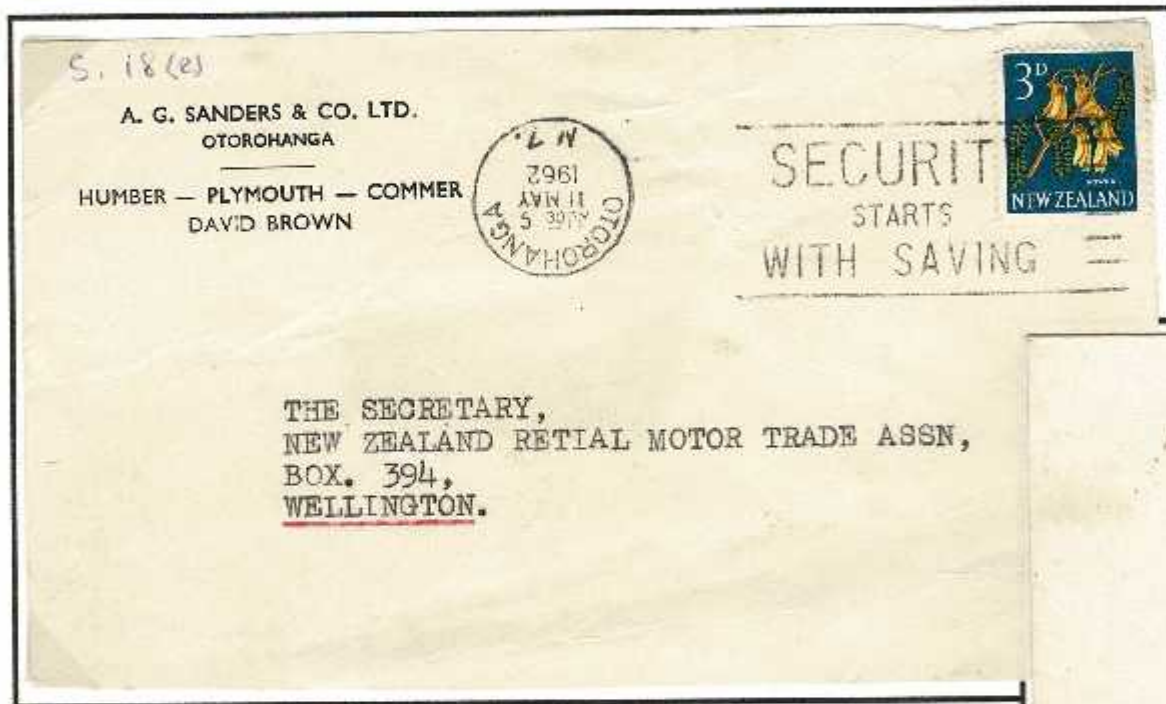
Centenary cancellation 10 SEP 1985

Postal History Society new issue service

<sup>1</sup> Personal communication from Otorohanga Postmaster 1985

## Slogan machine cancellations

The Otorohanga Post Office had a Universal machine cancellation machine from at last 1955 until downgraded in 1996. The slogans used were varied and some were kept at the post Office with others being supplied by Chief Post Office in Hamilton. Looking at some examples it would seem that several slightly different date-heads have been used. No specific study has been made.



Datestamp errors:

1962 Inverted but with hour correct

1977 Inverted



## Otorohanga National Kiwi Centre Slogan



The Otorohanga Stamp Club, in June 1978, approached New Zealand Post through the local Postmaster about the possibility of designing and funding a Slogan cancellation for use at the Otorohanga Post Office. This was agreed and New Zealand Post arranged the manufacture.

It was introduced 3 December 1979 and the Stamp Club produced 350 illustrated covers for the first day use. These each contained a detailed explanation and a card from the **Otorohanga National Kiwi Breeding Centre**

# OTOROHANGA

en route to and from the WAITOMO CAVES  
1 km off Main Route ☆ OPEN DAILY



## "NATIVE BIRD PARK"

- ☆ Nocturnal Kiwi House
- ☆ Native Bird Aviary
- ☆ Native Waterfowl

## DEER PARK

Hosts: OTOROHANGA ZOOLOGICAL SOCIETY INC.

---

## NATIONAL KIWI BREEDING CENTRE

OTOROHANGA STAMP CLUB,  
P.O.Box 7,  
OTOROHANGA, New Zealand.,  
3rd December, 1979.

Dear Sir/Madame,

### OTOROHANGA PICTORIAL POSTMARKING SLOGAN.

It is with great pleasure that I forward to you this envelope which has had its stamps cancelled by a specially designed and manufactured pictorial postmarking slogan which was commissioned today.

To those who anticipated receiving their special cancellation earlier - as did we - I offer my apologies, but delays are inevitable in breaking new ground, as the Otorohanga Stamp Club has done on this occasion.

INITIATION: The project was first mooted in June of 1978 and an approach was made to the New Zealand Post Office at that time. It was pointed out by them that existing pictorial postmarking slogans in use at that time had been commissioned by the New Zealand Tourist and Publicity Department, to help publicise major tourist centres.

FINANCE: With the information that a pictorial postmarking slogan was likely to cost something in the vicinity of \$200 to manufacture, the local service clubs were approached, along with visits to the Otorohanga District Community Council and the Otorohanga Zoological Society. The final cost of the slogan was financed as follows;

Otorohanga District Council	\$40
Otorohanga Zoological Society	\$115
Otorohanga Rotary Club	\$50
Otorohanga Lions Club	\$40
	\$245

DESIGN: A local club member was involved in designing the proposed slogan, the finished artwork was approved by the New Zealand Post Office and handed on to Remingtons Business Equipment for hand engraving and completion. All this was not able to be completed before mid-November 1979.

USE: Collaboration with the Otorohanga P.O. determined that the most suitable date of commissioning would be the 3rd December, 1979, and the slogan would be in use for the months of December and January, before alternating with the regular issue postmarking slogan.

PUBLICITY: It is expected that the pictorial postmarking slogan will be in use for at least 10 years and probably longer. With the Otorohanga machine cancelling around 10,000 letters per week, rising to nearly 18,000 at Christmas, 50% usage represents at least 250,000 impressions each year advertising Otorohanga in an eye - catching manner.

THANKS: My thanks must go to all those who made this project possible, and along with thanks to the financiers of the slogan, thanks must go to the Otorohanga Post Office, the Public Relations Department of the New Zealand Post Office, and last, but not least, to the members of the Otorohanga Stamp Club who thought of the idea and gave of their time and effort when required.

Yours sincerely,

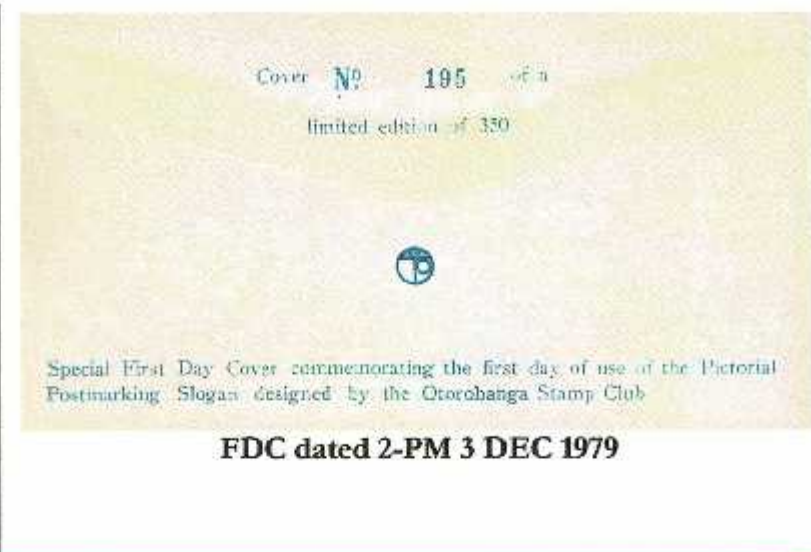
Dr. A. R. Marshall.

PRESIDENT





FDC dated 10-AM 3 DEC 1979  
First mail Usage



Above: Kiwi Slogan 30 SP 1980 [last day 14c rate]

Right: Over-inked Kiwi Slogan with faint slogan on back 23 MAR 1983

14c Postage rate August 1, 1979 to 30 September 1980

24c Postage rate April, 1, 1982 to 30 June 1985

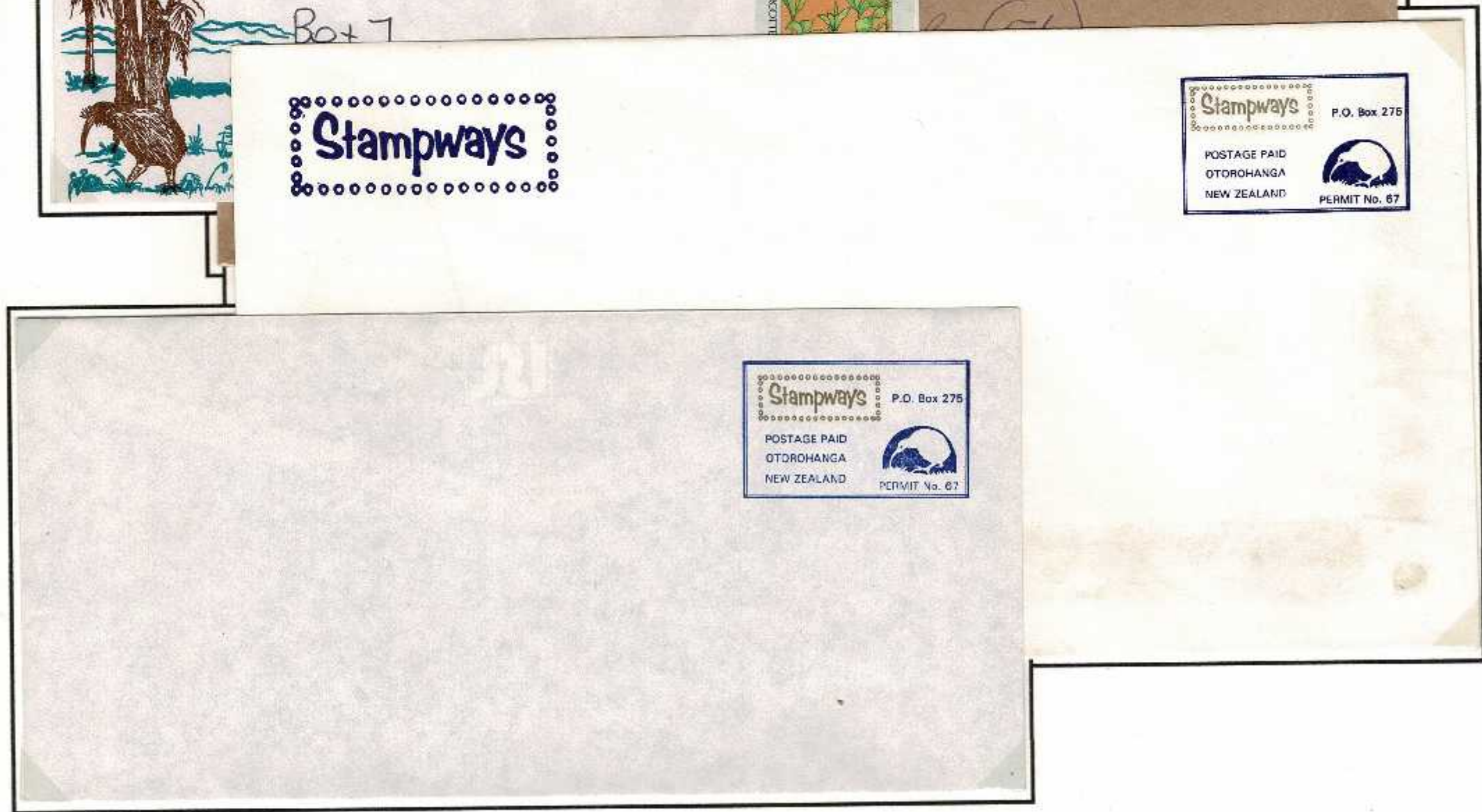


## Otorohanga Postage Paid Permits

The Postal Regulations introduced "Permits" from January 1, 1916, and required that- *"In the upper right-hand corner of the face or address side of the envelope ... there must be printed a statement showing the amount of postage ... the word 'Paid' and the name of the Post Office at which posted, followed by the permit number. Persons who wish to use a permit only occasionally may have the imprint made by means of a rubber stamp."*

Subsequent Postal Regulations removed the requirement for the amount of postage and required "Postage Paid" to be included instead.

It is noted that a requirement for issuance of a Permit was *"Permits are granted only to reputable persons or firms for whose identity the Post Office can vouch."*



## Otorohanga Franking Machines {meters}

New Zealand Post introduced regulations permitting the use of Franking machines on mail instead of postage stamps. Over the decades there have been many types of machines used. The use is bound by a strict set of Rules set out in the Post Office Regulations. The dies with the values had to be registered and remained the property of the Post Office. The impressions were to be in bright red. The articles were to be handed to Postal officials. The meters had built-in recording systems of the amount of postage to be paid and there was regular accounting. When decimal currency was introduced, 10th July 1967, all meters were required to have all the dies replaced.

Examples from Otorohanga Timber Company [est 1932]



Otorohanga Timber Company Rotex "G" meter with advertising.  
13 SEP 55 with 2d and 1d impressions G822 - 3d inland letter rate.

The Rotex "G" machines were first introduced January 4, 1932. All denominations had "G" then the number. They were used with the Frank stamp with or without the date-head and some with slogans as seen in Illustration here from Volume III PSNZ. Despite the Regulations a small number used black or purple ink. Hand powered.



Otorohanga / Timber Co. Ltd / Box 18 / for all / Building Needs

17 SEP 65 3 [pence] Z 345 Meter

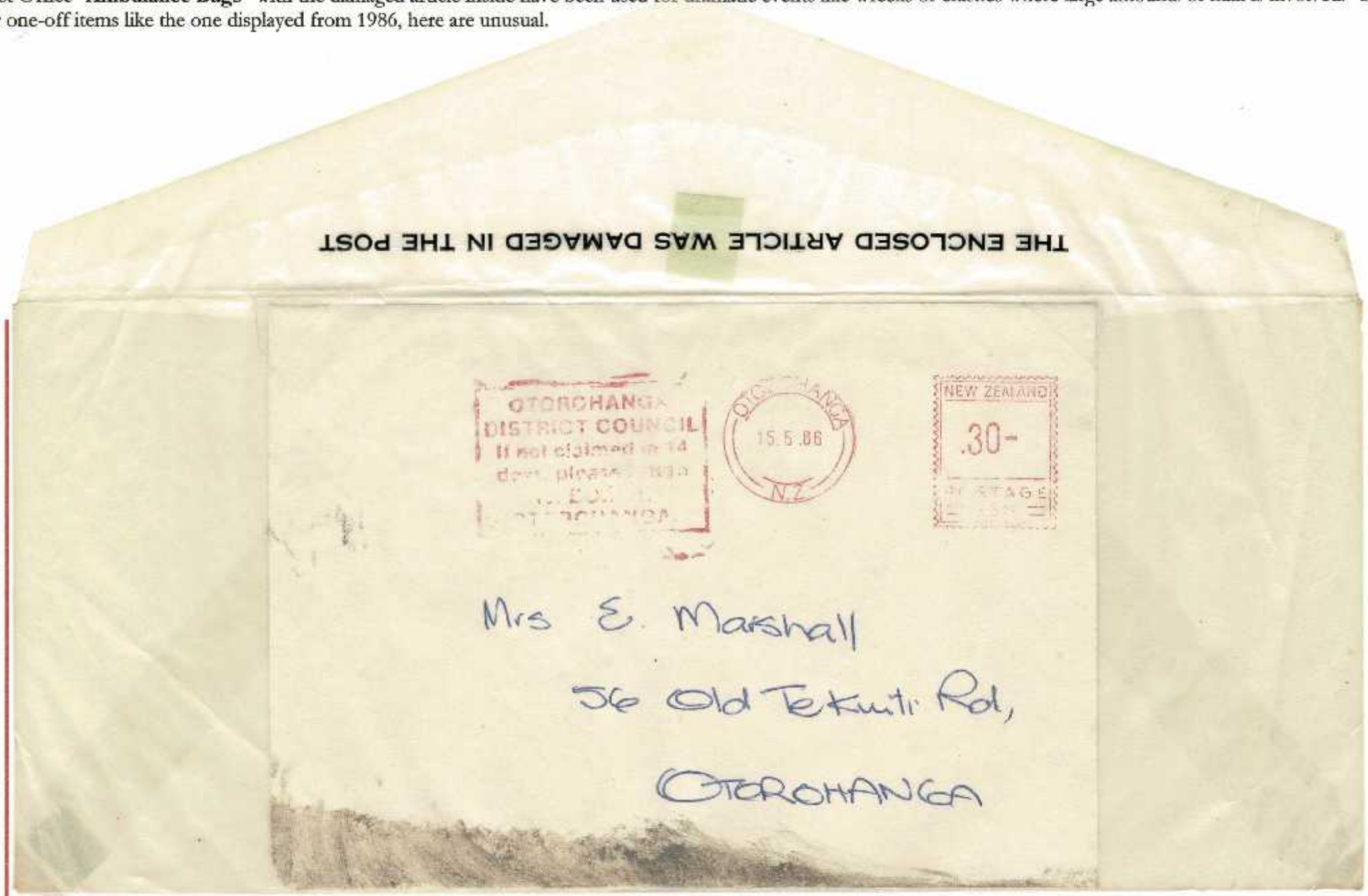
Z354 2½ cents



## Damaged in the Post

The Post Office Regulations protected the sanctity of the mail and it is the duty of all officers handling mail articles, to indicate in various ways that the mail has been damaged during transmission through the post. The delivery of any correspondence in a damaged condition, without an indication of the cause, might raise suspicions as to the integrity of postal officials. Numerous markings have been used at many Post Offices and this is a very specialised collecting interest.

Post Office "Ambulance Bags" with the damaged article inside have been used for dramatic events like wrecks or crashes where large amounts of mail is involved. Use for one-off items like the one displayed from 1986, here are unusual.



## Otorohanga Promotional Envelopes

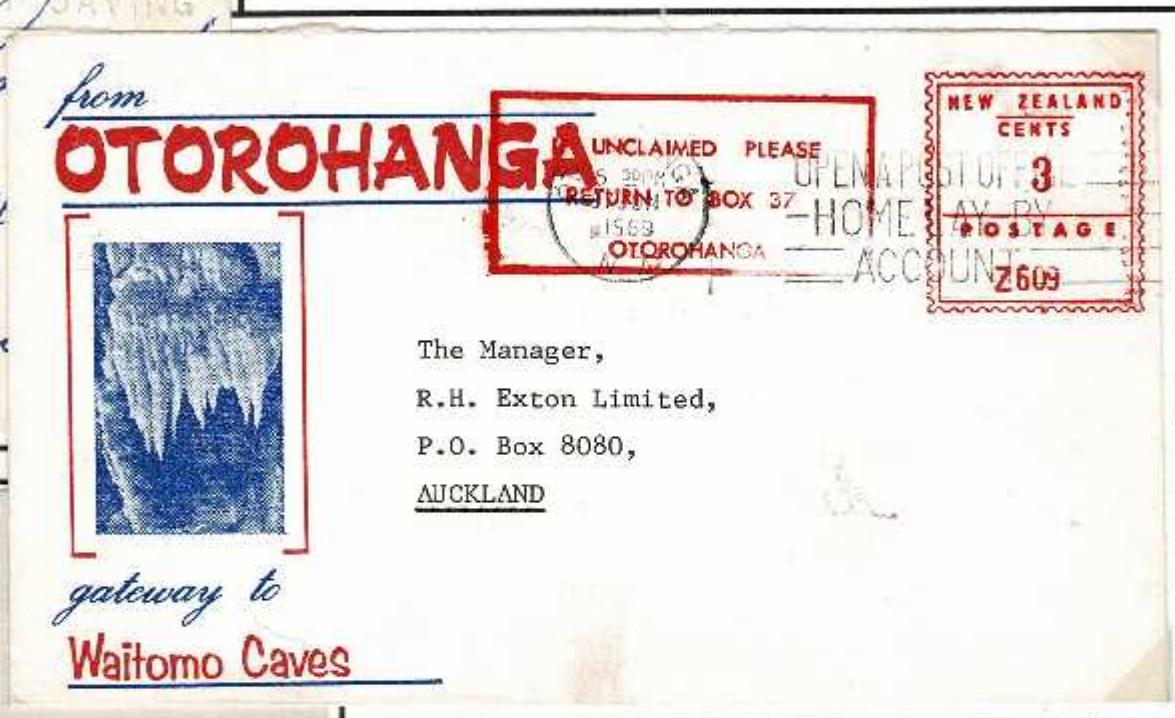
There are several themes used to promote Otorohanga. The earliest is the fact that Otorohanga is the **Closest Town to the World Famous Waitomo Glow-worm Caves**. This can be seen Novelty Cards [about 1921] with 12 photographs including several of the Waitomo caves. The **Kiwi House** opened in 1971 and is a recognised Kiwi Breeding Centre and Bird park with a large outdoor aviary. The most recent promotion is of **Kiwiana Town** set up in 1999 and officially recognised by the Prime Minister in 2002. The Ed Hiliary Walkway with the iconic panels is part of the promotion.



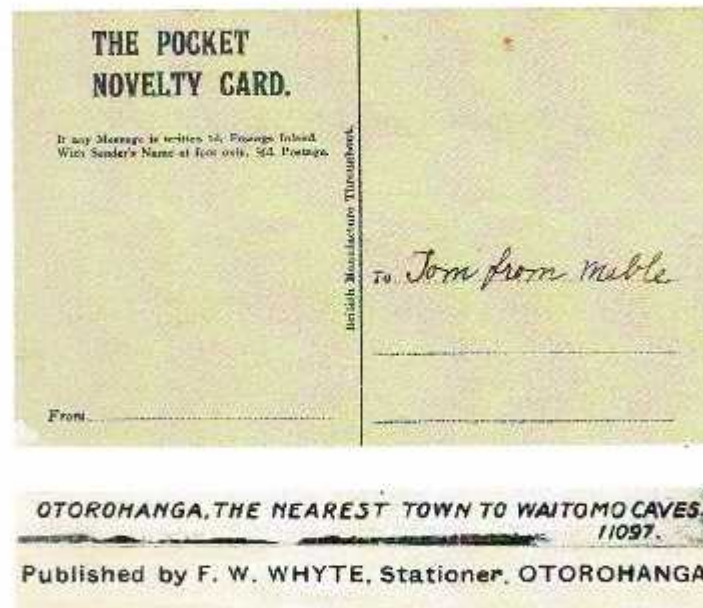
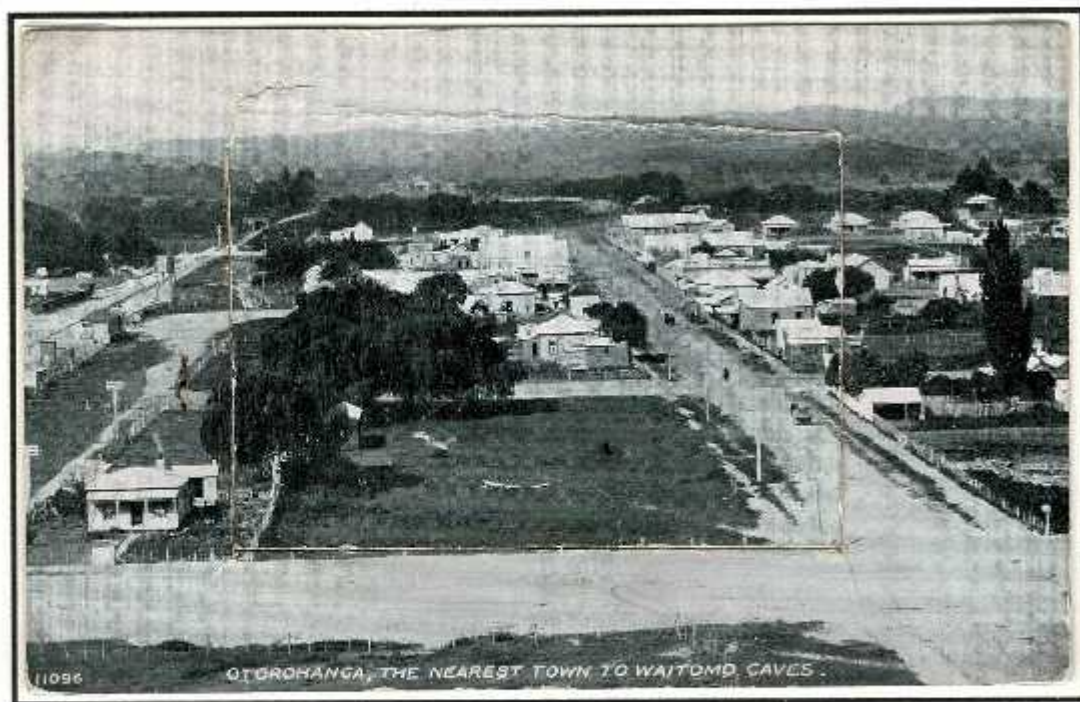
From OTOROHANGA gateway to Waitomo caves.

Printer unknown

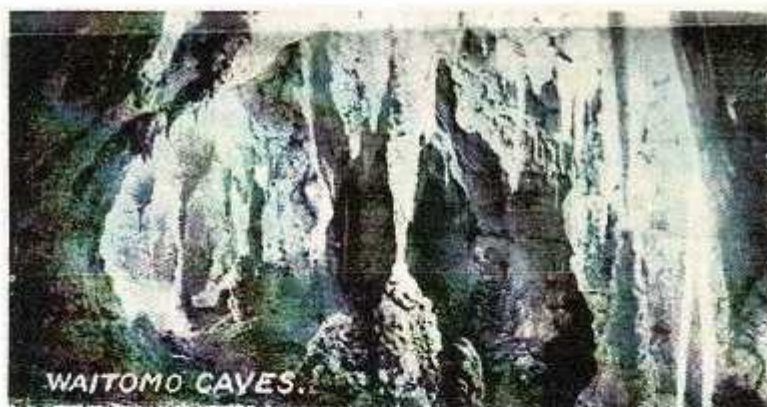
Examples 1868-1969



In 1986, the town briefly changed its name to **"Harrodsville"**. This was a protest in support of a restaurateur, Henry Harrod of Palmerston North, who was being forced to change the name of his restaurant following the threat of lawsuits from Mohamed Al Fayed, the then owner of Harrod's department store in London. With the support of the Council all business changed their name. Caused widespread interest!

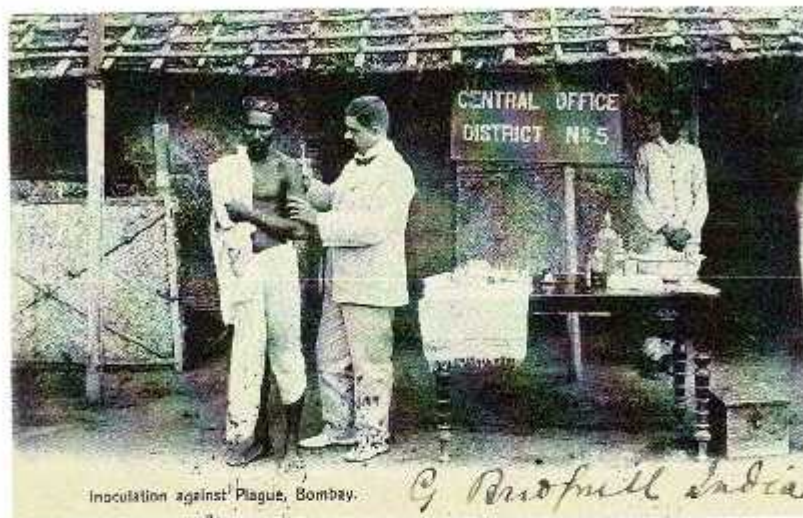


Novelty Promotional Postcard. British manufacture. Photography and inserts by F W Whyte Stationer Otorohanga. C. 1912  
 Contains 12 images including 4 of Waitomo caves.



## Overseas Inward Mail to Otorohanga

Postcard over-written "*Printed Matter*" [cheaper rates] 1 anna mailed Dharamtala, India 17 NO 04 to Devonport, Auckland. Auckland 16 DE 04, Devonport 19 DE 04, manuscript redirection "*Waitomo Caves Otorohanga*" Devonport 20 DE 04, Auckland machine 20 DEC 1904. **Otorohanga 21 DE 04.** [34 days transit].  
 Manuscript deletion of Otorohanga. The Waitomo Post Office opened 24 July 1903 becoming Waitomo Caves 31 August 1907.



Registered London 13 JE 37 Stamp dealer mail with 9/6d paid with various Mediterranean Expeditionary Forces overprints [9/-] and 6d Registration.  
 Addressed to "*Rural Deliver No. 2 Otorohanga*"  
 Received Otorohanga "C" Class 6 JL 37 [24 days transit]



MISS NANCY LUXMOORE  
 ANNETTE BEAUTY PARLOR  
 MANIAPOTO ST.  
 OTOROHANGA, N.Z.



Postcard New York NOV 1 1946  
 Grand Central Station, up-rated with  
 2c Presidential Series [Adams] to  
 correct foreign postcard rate of 3c.  
 Addressed to Nancy Luxmore  
 Annette Beauty Parlor Maniapoto  
 Street, Otorohanga.  
 From Collier's Magazine A 'General  
 Interest' weekly 1888-1957.

Received Otorohanga "C" Class  
 16 DE 46 [45 days transit]



**Otorohanga Correspondence Not Delivered.**

The Post Office Regulations have detailed instructions to postal officials concerning mail that cannot be delivered. There have been many hundreds of markings of many types for the many reasons that the mail could not be delivered. This is an interesting collecting area of Postal History. Postal officials were able to use "Try" manuscript markings in an attempt to locate the addressee. If mail could not be delivered and there was a sender address then **Return to Sender** markings were used. If the mail was not deliverable, it was held at the Post Office for a specified period then sent to the **Returned Letter Office**.



Hobart 28 MCH 1950 to Otorohanga with  
"Unknown by Postmen OTOROHANGA: Boxed "UNKNOWN"

Otorohanga "J" Class 17 AP 50; Otorohanga "C" Class 17 AP 50.  
Oval GPO Hamilton Returned Letters Office 19 APR 1950  
Wellington Returned Letter Office "J" Class 29 AP 50



Wellington 16 SEP 1963 to Otorohanga with:-

NOT KNOWN BY POSTMEN  
OTOROHANGA  
NOT A BOXHOLDER AT POST OFFICE OTOROHANGA  
Boxed UNKNOWN. And Return to Sender pointing hand front &  
back - to C M McNaught Philatelist



Wangaratta Vic 19 AUG 1971  
NOT KNOWN BY POSTMEN  
OTOROHANGA  
Otorohanga "J" Class 23 AU 71

And "Try C/- Dalziel"





Not Known by Postman  
 OTOROHANGA  
 1 C 2  
 3 4

Not Known by Postman  
 OTOROHANGA  
 1 C 2  
 3 4

WAIHI  
 3 05 PM  
 11 MAR  
 1983

New Zealand  
 24c  
 NATIONAL  
 POSTAL  
 SERVICE  
 BONDS

Dr A.J. Marshall  
 126 Alexander St  
 Otorohanga Bx 7.

TRY old Te Kuiti Rd.

INSURE  
 YOUR  
 CONTENTS  
 WITH  
 VALIA

New Zealand  
 24c

OTOROHANGA  
 26 MAR 1986

Mr E. Marshall,  
~~Otewa Rd~~  
 Otorohanga.

44/10/85

Waihi 11 MAR 1983 with **Not Known by Postmen OTOTOHANGA** and **"Bx 7"** a "try" redirection

Otorohanga local 26 MAR 1986 to Otewa Rd with **Not Known by Postmen OTOTOHANGA "Try Rd5"** [Otewa Rd is part of RD5] and **"Try old Te Kuiti Rd"** and Otorohanga **"C" Class 29 MR 86**

Otorohanga "C" Class 26 OC 86, wrongly addressed with boxed **NO SUCH STREET IN OTOROHANGA** and **Return to Sender** hand

**NO SUCH STREET  
 IN OTOROHANGA**

RETURN  
 TO  
 SENDER

Mr & Mrs J.H. MARSHALL  
 90 AVONDALE ROAD,  
 OTOROHANGA  
 NAPIER

NEW ZEALAND 25c



2d Paid Permit Auckland with Auckland machine 8 DEC 1958 on envelope incorrectly faced for the machine MOTORISTS CARELESSNESS KILLS slogan.

Window envelope to Otorohanga with boxed **UNKNOWN ON No. 4 R.D. OTOROHANGA.** Boxed **UNKNOWN** and **Return to Sender** hand with Otorohanga "C" Class 10 DE 58.

One of a number of similar items sent to bogus addresses to obtain the undeliverable markings.

Registered Otorohanga No 636 addressed locally 28c postage cancelled Otorohanga "J" Class 5 MY 76.

Manuscript "*deceased*" and boxed UNCLAIMED with **Return to Sender** and "*RLO - Hamilton*" and octagonal Hamilton R.L.B 7 MAY 1976.

Mail sent to the **Returned Letter Branches** was retained one month before being destroyed.



## Deficient Postage at Otorohanga

The New Zealand Post Office has always been vigilant about correct postage being paid and has introduced a series of regulations and markings aimed at collecting the deficient postage along with a surcharge. The introduction of postage due stamps in 1899 simplified the payment and collecting aspects but successful trials of using ordinary postage stamps instead led to the phasing out of their use.

The deficient postage was always charged along with a surcharge equal to the deficiency - **Double Deficiency** - and special "Keyhole" rubber stamps were widely introduced for this purpose. Another specialised area of postal history collecting.

The **Double Deficiency** procedure was replaced from **February 2, 1976**, when the postage rates were changed, to a system of **deficient postage** + a **5c Surcharge** - new rubber stamps were provided.



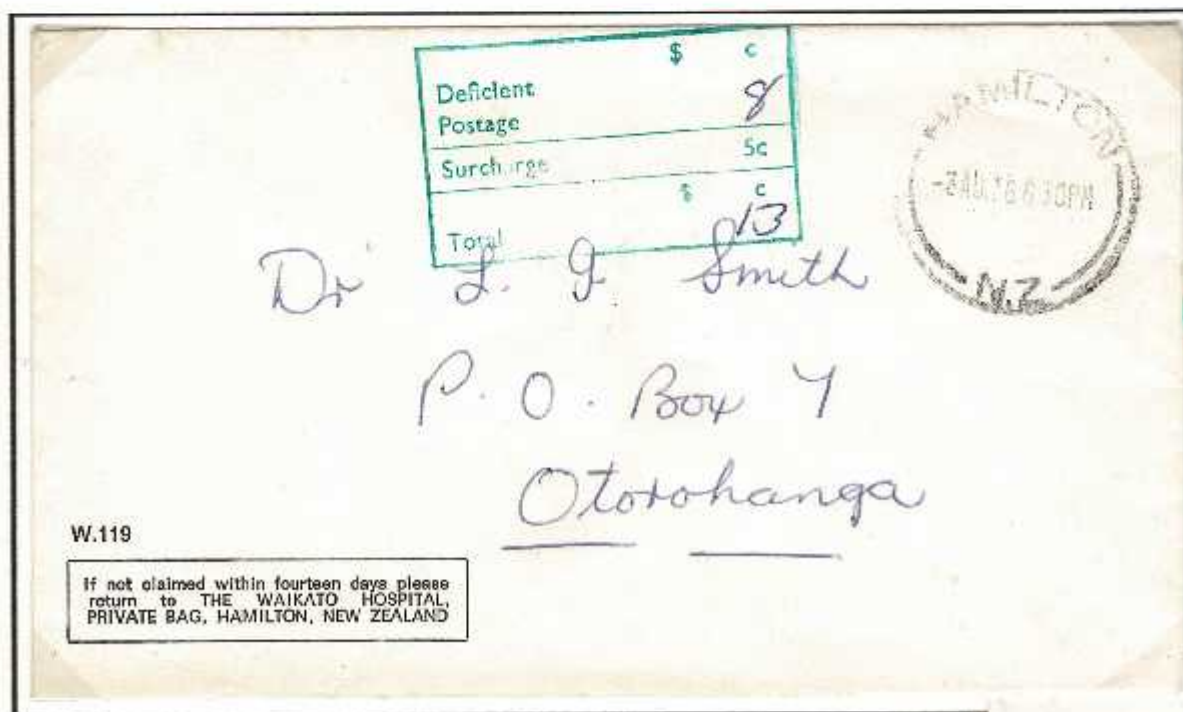
**Double Deficiency** with 2d Cancelled Otorohanga 27 SP 65. The health stamp has been previously used so has been correctly marked off in manuscript and the 1d short postage noted.

Mailed without postage **Otorohanga 11 FE 75** on back with **Double Deficiency "6"** with 5c & 1c cancelled **Otorohanga 18 FE 75**

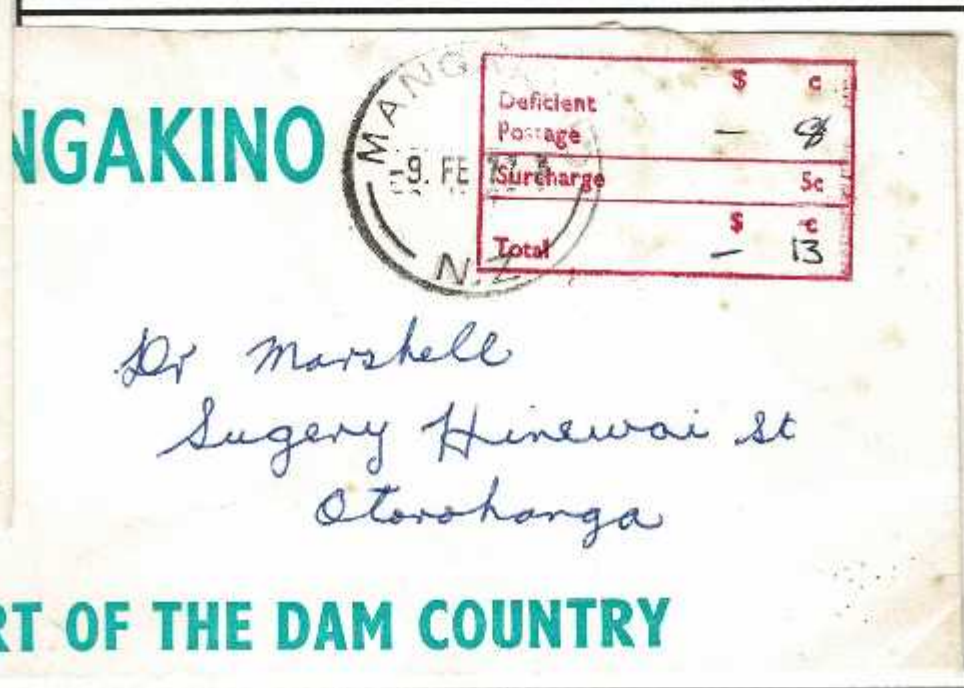


Mrs. E. Marshall,  
c/- Doctor R. Marshall,  
70 Gradara Avenue,  
OTOROHANGA.

**5c Surcharge: February 2, 1976 to 31 July 1979:** The Double Deficiency system was replaced February 2, 1976 when the standard letter rate was increased from 4 cents to 8 cents. The deficiency plus a "surcharge" of 5c was now charged and a new rectangular rubber stamp was distributed to over 500 post offices.



**Hamilton 3 AU 76 to Otorohanga** - without postage  
8c + 5c - 13c



**Mangakino 9 FE 77 to Otorohanga** - without postage  
8c + 5c - 13c

**HEART OF THE DAM COUNTRY**

Postal Rates 1976 - 1995 [PSNZ Vol 6]		
Date Introduced	Standard Letter Rate	"Surcharge"
2.2.1976	8 ct	5 ct
1.10.1977	10 ct	5 ct
1.8.1979	14 ct	15 ct
1.10.1980	20 ct	20 ct
1.4.1982	24 ct	25 ct
1.7.1985	28 ct	28 ct
1.2.1987	40 ct	40 ct
1.7.1991	45 ct	45 ct
2.10.1995	40 ct	40 ct

Note: From 1.10.1980 the Surcharge = Standard postage = 'Double deficiency'  
For mail sent without Postage [Exception 1982-85 ease of payment]



Deficiency 6; Surcharge 20; Total 26 cents

	\$	c
Deficient		6
Postage		
Surcharge		20c
Total	\$	26c

Paid with 5c + 20c + 1c = 26 cents, cancelled Otorohanga Supervisor  
General rubber datestamp 16 MAY 1983.  
According to the table the surcharge should have been 25c

Deficiency 6; Surcharge 20; Total 26 cents

24c postage cancelled Te Kuiti 1 SP 83

Paid with 2c + 24c = 26 cents cancelled 2-line rubber stamp  
Otorohanga 4 SEP 1983

The standard letter rate in 1983 was 24c, non-standard was 35c.

Deficiency written as "6" - must be incorrect. If non-standard the deficiency would have been 9c, There was no 30c rate [24c + 6c]

Surcharge should have been 25 cents





Hamilton 09 JAN 85 with Deficiency 24 and Surcharge 20; Total 44

44c paid with 40c + 4c cancelled Otorohanga 13 JA 85

Postal rate [1.4.82 - 1.7.85] was 24 cents so deficiency correct  
**Surcharge should have been 25 cents Incorrect**

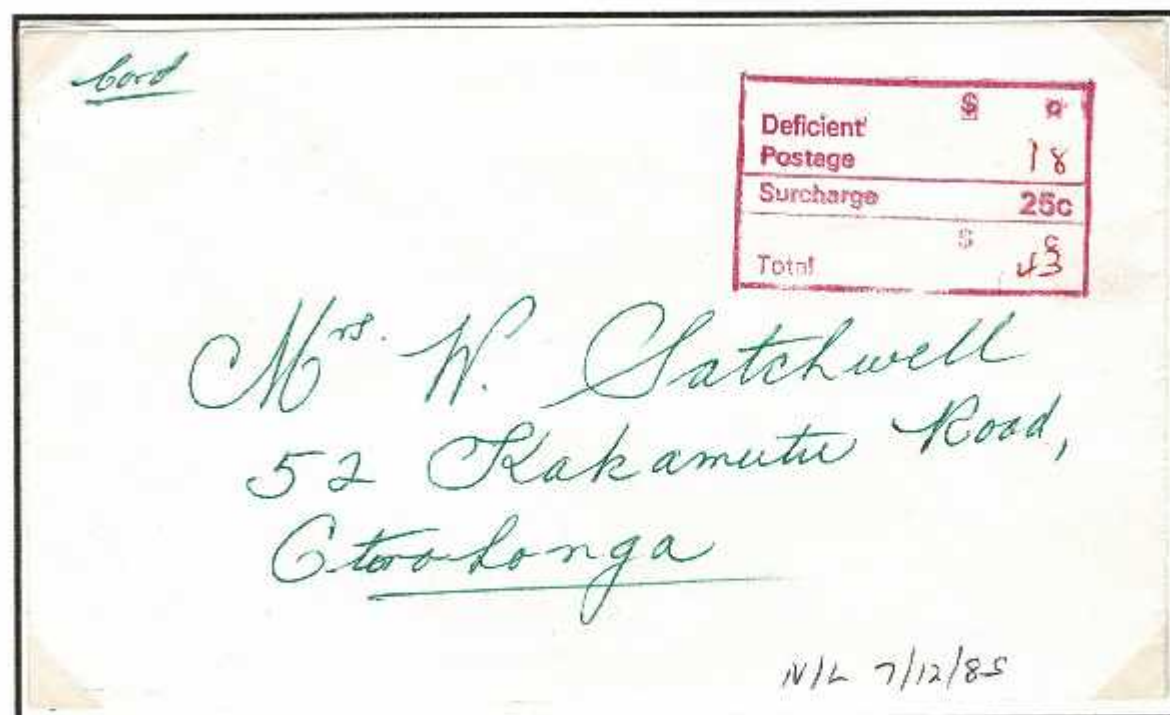


Deficient	\$	0
Postage		25
Surcharge		25c
Total	\$	50

**Deficiency 25 and Surcharge 25; Total 50 cents**

50c paid with 50c and cancelled Otorohanga 27 AU 85

**Surcharge should have been 28 cents Incorrect**



Deficient	\$	18
Postage		25c
Surcharge		25c
Total	\$	43

Sent from a Napier address with out postage by endorse **"Card"** with **Deficiency Postage 18; Surcharge 25c; Total 43c;** to Otorohanga where **"N/L 7/12/85"** annotation by postman. 43c paid with 3c + 40c cancelled 2-line rubber marking **Otorohanga 9 DEC 1985.**

The **Special Postal Rates for Christmas Cards** [1 November - 31 December 1985] was 18c so deficiency is correct.

**The Surcharge should have been 29c so Incorrect**



ADDRESS  
RURAL MAIL  
CORRECTLY



Deficient Postage	35
Surcharge	45
Total	80

Mrs M Martin  
43 Te-Kawa Street  
Otorohanga

Waitara 2 OCT 1991 with 45c postage.  
To Otorohanga.

Deficient Postage 35  
Surcharge 45  
Total 80 cents

80c paid with stamp on reverse cancelled  
New Zealand Post Limited  
Otorohanga  
4 OCT 1991



Deficiency 35 - Large Envelope rate  
was 80c - 45c paid deficit 35c correct  
Surcharge 45 correct 1/7/91-2/10/95

Deficiency 5 [rate was 45c]  
Surcharge 45  
Total 50 c  
No evidence of payment



Otorohanga Stamp Club  
c/o PO Box 7  
Otorohanga



Tauranga mail Centre 05 05 98 sent without postage

Boxed marking with fixed amounts  
Deficient Postage 40c  
Surcharge 40c  
Total 80c



Otorohanga Mailroom 7 MAY 1998  
"NL 7/5/98"

80c paid and cancelled Otorohanga 11 MAY 1998

Gisborne 29.01 99 with 40c paid [Large rate 80c]  
Boxed marking with fixed amounts  
Deficient Postage 40c  
Surcharge 40c  
Total 80c

Otorohanga Mailroom 29 JAN 1999  
"NL 29/1/99"

80c paid and cancelled Otorohanga 2 FEB 1999





Otorohanga Miscellaneous Markings



21 JUN 1982



2 APR 1982



3 JUN 1983



3 JUN 1983

New Zealand Post Limited  
19 OCT 1989  
MISC  
Otorohanga



Correct treatment of un-cancelled stamp at New Plymouth 10 JL 91:  
Lines drawn and Otorohanga datestamp 12 JL 91



Mr D Bevan  
P O Box 11  
OTOROHANGA



A. R. MARSHALL  
P O BOX 7  
OTOROHANGA

HN

**POST**

From **WAIKATO M.S.C.**

WKM 14423048 M 202031 OHA

To **OTOROHANGA**

OHA  
METRO

UNIT		DESCRIPTION			INCL		DATE	
OCR	MED ENV	XL ENV	MIX	MED ENV	XL ENV	O'SEAS MED 5*	C'SEA AO'S 58	2/10
1	3	5		10	12			FLIGHT
OCR REJECT	LGE ENV	AO'S		LGE ENV	AO'S	O'SEA XL 57	O'SEA MIX 59	WEIGHT
2	4	6	7	11	13			

**POST**

From **WAIKATO MSC**

To **OTOROHANGA**

DATE \_\_\_\_\_ FLIGHT \_\_\_\_\_ WEIGHT \_\_\_\_\_

WKM 248

**AU1**

**1**

8089  
0810  
N - 4

U20VUUU488160

Commedia

DHLac #: 2071100821619411

U IUS 2 025

Ross Marshall  
P O Box 194  
Ird126 - 101 - 678 Code:Paid

0.025kg

Otorohanga 3900

DP989032806NZ

DP989032806NZ

NON SIGNATURE

New Zealand  
No. 244316

Direct

FROM: DAI Post  
PO Box 210088  
Laurence Stevens Drive  
Auckland 2154

DHL

Description of Parcel Contents:  
1913 SS LACONIA TO MEDITERRANEAN 66884 WBO

Total 0.025 kg 58.89 USD

Sender certifies that this article DOES NOT contain any  
DANGEROUS GOODS or PROHIBITED ITEMS  
Signature: EMPIRE - STAMP - COMPANY  
Article may be opened officially

## Otorohanga Post Shop to Post Shop Franchise

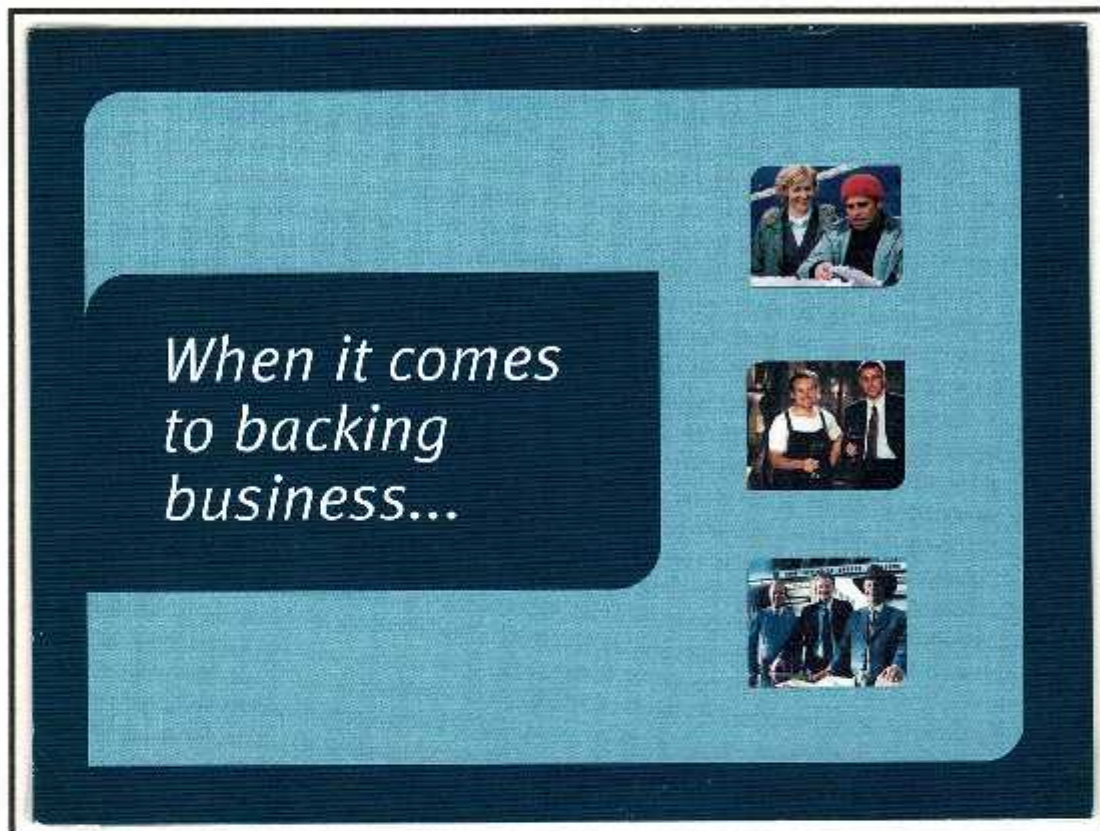
It is reported in the Mailcoach [Journal of the New Zealand Postal History Society Inc] Vol 3, No.3 where Robin Startup writes:

"Otorohanga (AK): This company post shop closed and was replaced by a franchise from 26 October 1996 - the pictorial datestamp has been transferred to the franchise and will be used to cancel request and philatelic mail."



## ANZ 5 cent Promotion 2004

In 2004 the ANZ bank had a promotion when the postage rate was to increase by 5 cents from 40 to 45 cents on April 5th, 2004. The commissioned some CALs [Computerised Advertising Labels] featuring two businesses that they considered outstanding ambassadors for the ANZ Brand. These CALs were in a block of 4 with the two businesses in vertical column. They had the New Zealand Post logo and denomination of 5c. One of the businesses was John and Karam Haddad of Otorohanga.



On April 5 postage increased to 45c. It's a small amount but it could cause a big inconvenience. And so, we've enclosed some 5c stamps to add to your 40c stamps to help with postage this month!

*So here's something to help with the increase in postage this month.*