

"Make-Ready" Electro B, Position 1.

"Make-Ready"¹

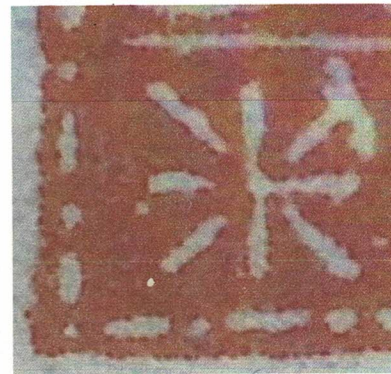
"This term is used in reference to the preparation made by the printer, after the printing base has been fitted to the press, to ensure that a satisfactory impression results over all the printed sheets when the press is operated. Make-ready comprises local adjustments of pressure, these adjustments are effected in various ways: by placing packing, sometimes a whole sheet of paper, sometimes only a scrap, often more than one layer thick [a] under a mounted plate [to bring it up to printing height] - termed "underlay"; [b] between the plate and its mount - termed "interlay"; and [c] between the back of the paper to be printed and that part of the press that provides the pressure - termed "overlay" ; other forms of "make-ready" include the use of a blanket of felt or other material to provide some resilience in the pressure."

The **Constant Flaw in Position 1** was produced by a defect in the original mould which was used to make 5 Electros A-E which formed the 100-cliché printing plate. This Constant Flaw is present in Position 1 from each Electro. On all blocks and sheets, both colours, this Constant Flaw is present on every Electro A, C, D, and E. I have 3 blocks in red printing where the Constant Flaw in Position 1 is not present in Electro B. In each example, the other [minor] Constant Flaws are present confirming that there has been no substitution. The blocks show no identifiable Electro Flaws except the dramatic flaw on A5 which appears to have been removed successfully, as it is only present in positional blocks with no other Electro Flaws.

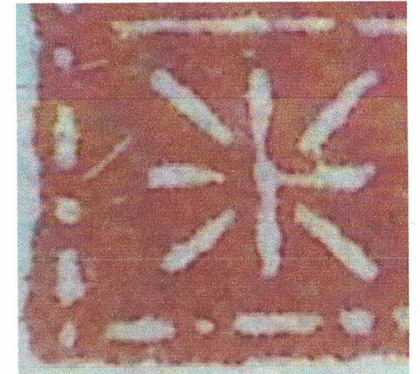
Close examination of the B1 cliché reveals a break in the white line exactly above where the Constant Flaw would intersect. A **"Make-Ready"** - a scrap of paper - has been placed into the plate depression that creates the Constant Flaw but this extended on to the groove [creating the white line] raising it enough to receive ink. This "make-ready" may have been a trial as it was not used on the Position 1 from the other Electros. Later in the printing process, the "make-ready" was displaced and the Constant Flaw reappears.



Positional
Block A1-5;
A1-15; B1-5.



Constant Flaw B1



"Make-Ready" B1



Block B1-B5; C1-C5; C11-15. All with identifiable Electro Flaws with **B1** showing Constant Flaw

¹ "Fundamentals of Philately" L N Williams. Chapter 7 "Printing Problems and Varieties" Page 165-166

ELECTRO FLAWS - [Plate Flaws]

Electro or Plate flaws are imperfections which develop on the printing plate and are manifest in the printed stamps. Such imperfections are cumulative over the life of the plate. Early printings will therefore have fewer electro flaws than later printings. As this issue is surface printed, any damage causing a depression in the surface of the plate will create a white [uncoloured] flaw while anything extra that raises above the plate surface will produce a coloured flaw. The quality of the printing and the amount of ink used greatly affect the appearance of Electro flaws.

Electro flaws have been identified only if present in at least 2 of the sheets or blocks studied - identified and described for **91 clichés**. Some are quite subtle! I have been able to identify electro flaws in **57%** of single examples. Electro Flaws in conjunction with the Constant flaws enable the Electro to be determined.



Positional Block: Electro C16-20; D6-10; D16-20; E6-10; E16-20
No Electro Flaws = Early Printing



Positional Block: Electro C16-20; D6-10; D16-20; E6-10; E16-20
All Electro Flaws = Late Printing



Proof Sheets by definition are printed before the print run is started and will have only Constant Flaws without any Electro Flaws.

Examples from Proof Sheets have a **red line vertically** through the middle of each stamp but cannot be plated.

Strip of 3 Position 18; 8; 18
from Proof Sheet



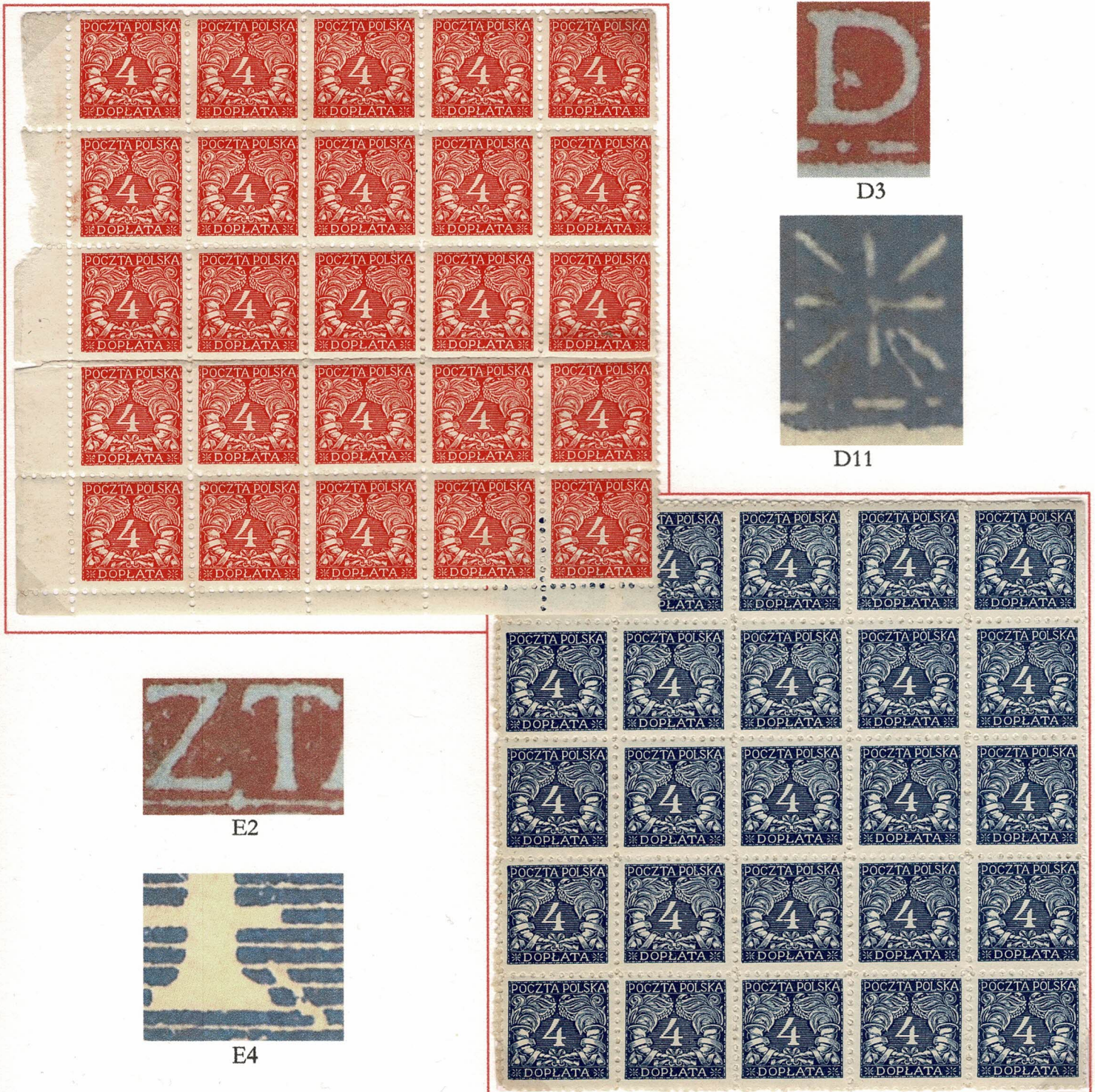
Electro C, Positions 4-10 & 14-20, all with Electro Flaws enabling plating

Successful Plate Correction of Electro Flaws

Part of the printer's skill is correcting where possible plate defects which adversely affect the finished product. The term "Make-Ready" is used to describe this process.

The red printing block of 25 [lower left sheet] has distinctive flaws on Electro D Positions 3 & 11 and Electro E Positions 2 and 4. There are no other recognised Electro flaws identified.

The blue printing block of 25 [lower right sheet] has all identified Electro Flaws but the distinctive flaws seen on the red printing on Electro D Positions 3 & 11 and Electro E Positions 2 and 4 are absent suggesting correction.



POSITION 1 Constant Flaws

- 1a Large white flaw in left ornament
- 1b TF missing top dash and dot, TLC blunted
- 1c Small white flaw to left of foot of "4"



1a



1b



1c

Electro Flaws

- A1 Additional white flaw in centre left of left ornament
- B1 LF break or dot 3rd dash from upper white line
- C1 Small white flaws right end of 3rd line base of "4"
- D1 White flaw in "C" of POCZTA
- E1 Small white flaw 6th line up opposite left base of "4"

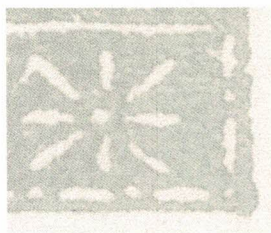
A1	A1	B1	B1	B1	C1	D1	1

POSITION 2 Constant Flaws

- 2a LRC bulge
- 2b RF diagonal line 2nd dash from LRC
- 2c Small coloured dot in ribbon above "O" in DOPLATA

Electro Flaws

- A2 White flaw on line between "P" & "O" of POCZTA
- B2 Thin line extending from top of vertical part of "4"
- C2
- D2 White flaw on lower edge above top of ribbon coil
- E2a White flaw below line under "Z" of POCZTA [early]
- E2b Crack diagonal line TF through "L" of POLSKA [late]



2a 2b



2c



E2b

A2	A2	B2	B2	D2	E2a	E2b	2

POSITION 3 Constant Flaws

- 3a Large white flaw below "A" of POLSKA
- 3b Small 'bite top "A" in POLSKA
- 3c Small coloured flaw cross piece of "4"



3a 3b



3c



B3



POSITION 4 Constant Flaws

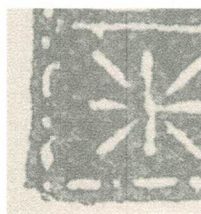
- 4a Break in white line below "PO" and "OE" in POLSKA
- 4b TRC bulge and slight overhang
- 4c Small coloured dot in right foot of "A" in POLSKA
- 4d LLC notched
- 4e Dent to of "T" in DOPLATA



4a



4b 4c



4d



4e



E4



Electro Flaws

- A3 White flaw top of "P" of POCZTA - connect to dash
- B3 White flaws below "O" of POLSKA connecting to line
- C3 2 white flaws at ends of 2 lines to right central "4"
- D3 White flaw on line above 2nd "A" of DOPLATA
- E3 LF 2 small breaks on 4th dash from LLC

Electro Flaws

- A4 LF break [or dot] on second dash from LLC
- B4 Small target flaws end lines to left central "4"
- C4 RF Diagonal line breaks dash by right ribbon
- D4 TF break from dash above "O" in POLSKA
- E4 Large white flaw right of "4" [early only] Large 'target' flaw on line above "TA" of DOPLATA

POSITION 5 Constant Flaws

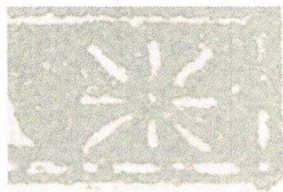
- 5a TF break above "S" in POLSKA
- 5b RLC bulge below corner
- 5c Coloured dots right leg of second "A" of DOPLATA
- 5d Small irregular white flaw inside LF by 5th dash from LLC

Electro Flaws

- A5a Large white flaw below "O" of DOPLATA [early only]
- A5b RF dot or break 4th dash from LRC
- B5 Small white flaw on line below "A" in POCZTA
- C5 Small white flaw on line to left of second "A" in DOPLATA
- D5 BF small break by "D" of DOPLATA
- E5 Large white flat just left of "T" in DOPLATA; "S" of POLSKA joined to line below



5a



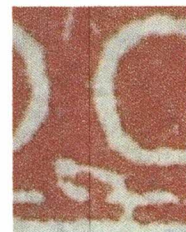
5b



5c



5d



A5a



POSITION 6 Constant Flaws

- 6a TLC small projection
- 6b Tiny white flaw to left of "4" on 5th line from cross piece

Electro Flaws

- A6 TF coloured dot above "L" in POLSKA; White flaw below the "A" of POCZTA
- B6 White flaw top of "O" in DOPLATA joins line; Small triangular flaw on line > "T" in DOPLATA
- C6 TF small break 3rd dash above "O" of POCZTA
- D6 Large white flaws below "A" of POCZTA
- E6 Large white flaw to right of "A" in POCZTA; LF White flaw connecting 4th dash and ribbon



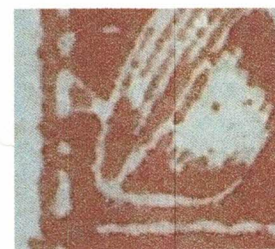
6a



6b



E6



E6



POSITION 7 Constant Flaws

- 7a TLC curved compartment line
- 7b RF White dot on 5th dash from RLC

Electro Flaws

- A7 Long coloured line diagonally up to left across "4"
- B7 Small white flaw on line below "A" of POCZTA
- C7 Small vertical coloured flaw on upstroke of "4"
- D7 Right leg of "A" in POCZTA joins line below
- E7 RF Large white flaw opposite 6th dash from LRC



7a



7b E7



A7

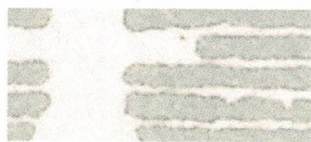


POSITION 8 Constant Flaws

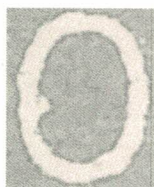
- 8a 2 very small white flaws on right of "4" the line below the cross piece

Electro Flaws

- A8
- B8 White flaw on "S" of POLSKA
- C8
- D8 Small white flaw on line below foot of "4"
- E8 White flaw inside "O" of POLSKA



8a



E8



B8



POSITION 9 Constant Flaws

9a TRC acute left angled projection



9a



Electro Flaws

A9

B9 BF small dent below "L" of DOPLATA

C9 LF White flaw top left ribbon opposite top 5th dash

D9 White flaw right side "D" of DOPLATA

E9 RF White flaw opposite top of 6th dash



E9



POSITION 10 Constant Flaws

10a TLC coloured dot making corner round with small dot LF 1mm from TRC

10b LLC pointed; LF 4 dots lowest 5mm



10a



10b



10b



Electro Flaws

A8

B8 White flaw on "S" of POLSKA

C8

D8 Small white flaw on line below foot of "4"

E8 White flaw inside "O" of POLSKA

POSITION 11 Constant Flaws

- 11a TLC projection
- 11b RF - break in first dash from TRC
- 11c Coloured dot in ribbon above right ornament

Electro Flaws

- A11 White flaw on right side "O" in DOPLATA; BF diagonal break to dash between "AT" of DOPLATA
- B11 BF Diagonal white line upwards to left between "AT" of DOPLATA;
- C11 Vertical white flaw on line between "P" & "O" of POCZTA;
- D11a White line in left ornament [early]
- D11b Small white flaw on line below "S" of POLSKA;
- E11 RF large break 1st dot below TRC; Coloured flaw on "O" of POCZTA



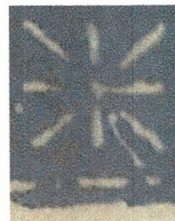
11a



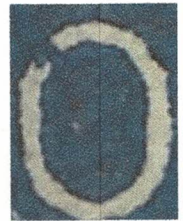
11b



11c



D11a



E11

A11	B11	B11	D11a	D11a	E11	11	11

POSITION 12 Constant Flaws

- 12a Curved white line on line above left ornament
- 12b TRC small coloured dot
- 12c White flaw on 2nd line above "4"
- 12d White flaw joining line & design left of top of "4"

Electro Flaws

- A12 RF second dash from RLC white flaws
- B12 White extension on "C" of POCZTA; "O" joined below
- C12 White flaw connects constant flaw at left to left ornament
- D12 BF diagonal line upwards to left from BF through "L" of DOPLATA
- E12 Small white flaw to right of left ornament



12a



12b



12c 12d



D12

A12	A12	B12	E12	E12

12	12

POSITION 13 Constant Flaws

13a RF extra dot between 8th dash and dot

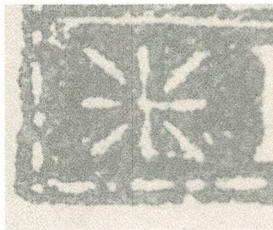


Electro Flaws

- A13 White line thickened flaw below "SK" of POLSKA
- B13 Coloured flaw second "A" in DOPLATA
- C13 White line extending up through "C" of POCZTA;
- D13 White line connects curve left of initial "S" to white line
- E13 RF break by second dash TRC; White scratch extending up through "P" of POCZTA

POSITION 14 Constant Flaws

14a BF dent under 3rd dot from LRC



Electro Flaws

- A14 Small 'target' flaw on line above right ornament
- B14
- C14 Large white flaw on "D" of DOPLATA
- D14 TF break to 3rd dash from TLC; Flaw between "O" & "L" of POLSKA
- E14 RF small white flaw by 3rd dash from LRC



Left marginal block from Electro A with Positions 1-5 and 11-15. Positions 13 & 14 show no Electro Flaws



Identified as Electro A by prominent white flaw on the 5th cliché A5

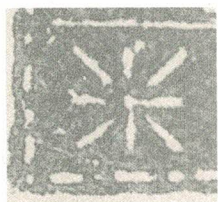
Two vertical strips of 5 with **Positions 4 and 14** alternating. Probably from each Electro A-E but all the clichés have **no Electro Flaws**

POSITION 15 Constant Flaws

15a Small white flaw to right of upper vertical line left ornament

Electro Flaws

- A15 TF break over "O" in POLSKA;
- B15 RF line extending in from 6th dash TRC
- C15 RF Large break by 6th dash from LRC; White scratch from dash through "P" of DOPLATA
- D15 White flaw in "O" of DOPLATA;
- E15 large 'target' flaw rightt of "A" in POLSKA; LF large dent beneath 3rd dash from LLC



15a



B15

Strip Position 5/15, identified by A5 flaw. A15 has electro flaws but B15 and C15 show none



16a 16A



16b

POSITION 16 Constant Flaws

- 16a Coloured flaws in lower part of "P" of POCZTA
- 16b LRC notched

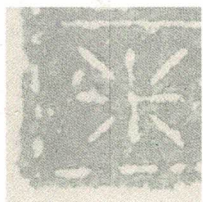
Electro Flaws

- A16 Large white flaw by "P" of POCZTA
- B16 White connects foliage to line below "P" of POLSKA; LF small dent above 4th dash
- C16 LF diagonal line; White dot between "L" & "S" of POLSKA
- D16 White flaw top of 2nd "A" in DOPLATA
- E16 BF large break 2nd dash from RLC
- AE16 White flaw right ornament [not yet plated]



POSITION 17 Constant Flaws

- 17a White flaw in left ornament above horizontal line
- 17b RF Extra dot below 4th dash to TRC
- 17c TRC rounded projection



17a



17b



17c



E17



Electro Flaws

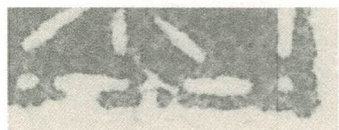
- A17 White flaw on line between "O" & "C" of POCZTA
- B17 TLC notched
- C17 White flaw where line to right of "4" meets ribbon
- D17 Small white flaw upper left of "O" in DOPLATA
- E17 Large white horizontal flaw to right of "4"

POSITION 18 Constant Flaws

- 18a BF breaks below 2nd dash and 2nd dot from RLC
- 18b TLC projection upwards +/- small dot

Electro Flaws

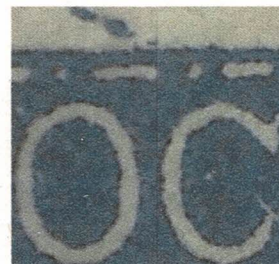
- A18 TF large angled compartment line above "O" in POCZTA
- B18
- C18 Angled line up to left from top of "4"
- D18 White flaw and line to right of "4" cross piece
- E18 Fine vertical white line to right of 3rd line below "4"



18a



18b



A18

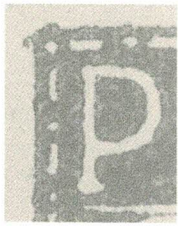


POSITION 19 Constant Flaws

- 19a TLC angled projection
- 19b TRC small vertical projection

Electro Flaws

- A19 LF large coloured line opposite fold in ribbon
- B19 Small white flaw from lower edge of foot of "4"
- C19 White flaw inside "P" of POLSKA
- D19 Large white flaw connecting line with "O" of POLSKA
- E19 White flaw to left of top of "4"



19a



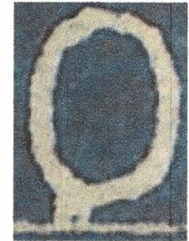
19b



A19



C19



E19

A19	D19	D19	D19	E19	E19	19	19

POSITION 20 Constant Flaws

- 20a TRC 45 degree angled projection especially Electro CDE
- 20b RF large dent by 6th dash from TRC

Electro Flaws

- A20 White flaw in 1st "A" of DOPLATA
- B20
- C20 Small white flaw in lower aspect of left ornament
- D20 White flaws around "A" of POCZTA
- E20 White flaw on line between "O" & "P" of POL:SKA



20a



20b



A20



A20



D20



E20

20	20	20	20	20	20	20

Cracked Plate affecting Electros D & E

Of the blocks and sheets available for this research. Half of them, equally split between the red and blue printings show a Plate Crack extending from Electro D, Position 12 through Electro E Position 2 to Electro E Position 13.

	1/11	2/12	3/13	4/14	5/15
C					
D					
D					
E					
E					

The crack in **Electro D, Position 12** cuts through the "L" of DOPLATA and the bottom frame below the left foot of "A". It extends to **Electro E Position 2** crosses the top frame and extends diagonally across the "L" of POLSKA into the wreath and cuts the right frame. It will continue in the space between E2 & E3 cutting the top frame of **Electro E Position 13** and continues across the "P" of POCZTA into the wreath.



D12



E2



E2



E13



- Positional block of 25 from lower left part of a sheet of 100.
- The Electro Flaws described in the exhibit are present in all clichés where they have been identified.
- This is evidence that the Plate Crack occurred late in the life of the Printing Plate.