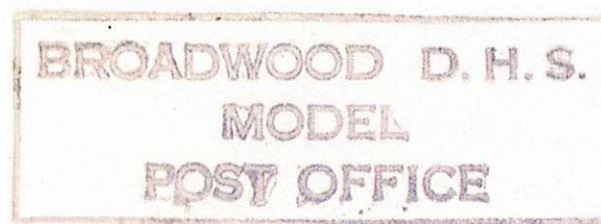
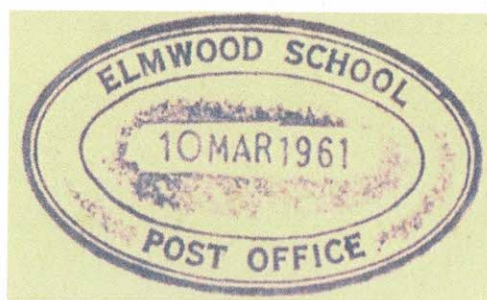
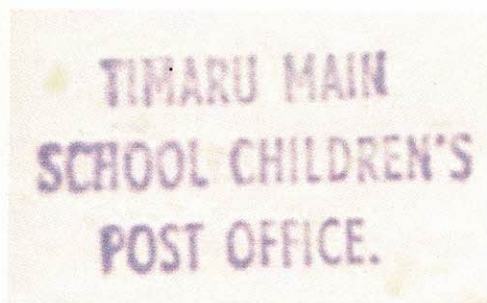


# New Zealand Model School Post Offices



This exhibit is the result of over 30 years of collecting the markings from Model School Post Offices. It is displayed alphabetically as this is the most logical approach to the subject especially as a classification by the much varied cachet appearance would make little sense. The exhibit is not complete as examples from 20 Model School Offices, that are known to have functioned according to Post Office records, have never been sighted. I show examples from all but nine of the thirty-three schools for which examples are recorded, of which 6 have just one example recorded with only two examples recorded from the other three.

The New Zealand Post Office was instrumental in arranging unofficial post offices in schools. These model post offices are more educational but do handle mail but are not open to the public. The first model post office was opened at Kelburn school in May 1952. It was experimental but proved its value in teaching children the handling and saving of money, the use of telephones and telegrams, the various postage rates and encouraged letter writing. Other model post offices were set up in schools and a information circular prepared as a promotion. The NZ Post Office actively cooperated with publicity posters, postage stamps for sale, a postman's hat, old telephone sets, a post office guide and a rubber cachet to apply on mail. The cachet was supposed to be applied in the back of letters which were put in a mail bag collected by the rural carrier or taken to the nearest post office for despatch.

The period of operation is often unknown - they were closed in school holidays. Some have been in operation for years, others have operated only for a term - the life of the office depending on the enthusiasm of both the teacher and the children.. But, as teachers moved on to other schools fairly frequently, offices they helped to establish did not appear to survive their departure. The mail volumes are not known [except for Epsom]. Currently there are no Model School Post Offices in operation, the last one was Hikurangi which was still working in 1996.

Examples are far from common especially non-philatelic items which clearly have a very low survival rate. When collectors learned of a new Model School Post Office, word spread, The Postal History Society was active with a subscription service. A number of Model Schools have no collector mail recorded, they were probably very short-lived and received no Post Office recording or collector knowledge of their existence. Exceptional; items have a blue border.

#### References:

- School Post Offices. R M Startup The Mail Coach Vol 2 No. 1 - October 1965
- Post Office file record 53/89 - from Startup Archive
- School Model Post Offices. Andrew McNiven The Mail Coach - August 1990
- School Model Post Offices. Andrew McNiven The Mail Coach - December 2007
- Startup Archive [now in Christchurch Philatelic Society Library]
- Silverdale School Model Post Office Sel Speight. The Mail Coach Volume 15
- Epsom School Post Office Gary W Carbines. The Mail Coach Volume 16 p204; Volume 17 p113-114
- Database records - McNiven & Marshall

# APITI SCHOOL MODEL POST OFFICE

Small rural school in Oroua Valley 40km north of Feilding. Centenary celebrated 7-9 February 1986.

Boxed cachet 85mm x 22mm. Opening day 9 December 1985, closing day 8 February 1986.

OPENING DAY COVER  
9-12-85



Opening Day 9-12-85 with Apiti "J" Class -9 DE 85 1

Apiti District Centennial 7-9 February 1986 hand-stamp

Closing Day 8-2-86 with Apiti "J" Class 8 FE 86 1

APITI SCHOOL  
MODEL POST OFFICE

APITI DISTRICT  
CENTENNIAL  
7-9 FEBRUARY 1986

A. R.  
P. O.  
Otorohanga

CLOSING DAY COVER  
8-2-86

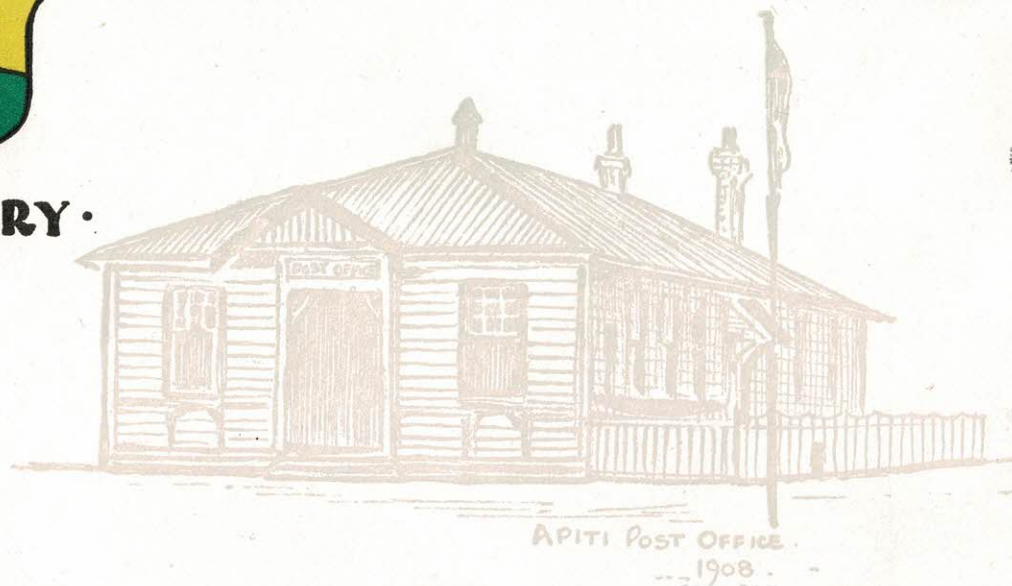


APITI SCHOOL  
MODEL POST OFFICE

Apiti Centenary envelope with Apiti Post Office 1908, cancelled Apiti 8 FE 86 [Closing day] with Apiti School Model Post Office cachet on reverse. Envelope is 357/1000.

A. R. Marshall

· APITI ·  
1886 - 1986  
· CENTENARY ·

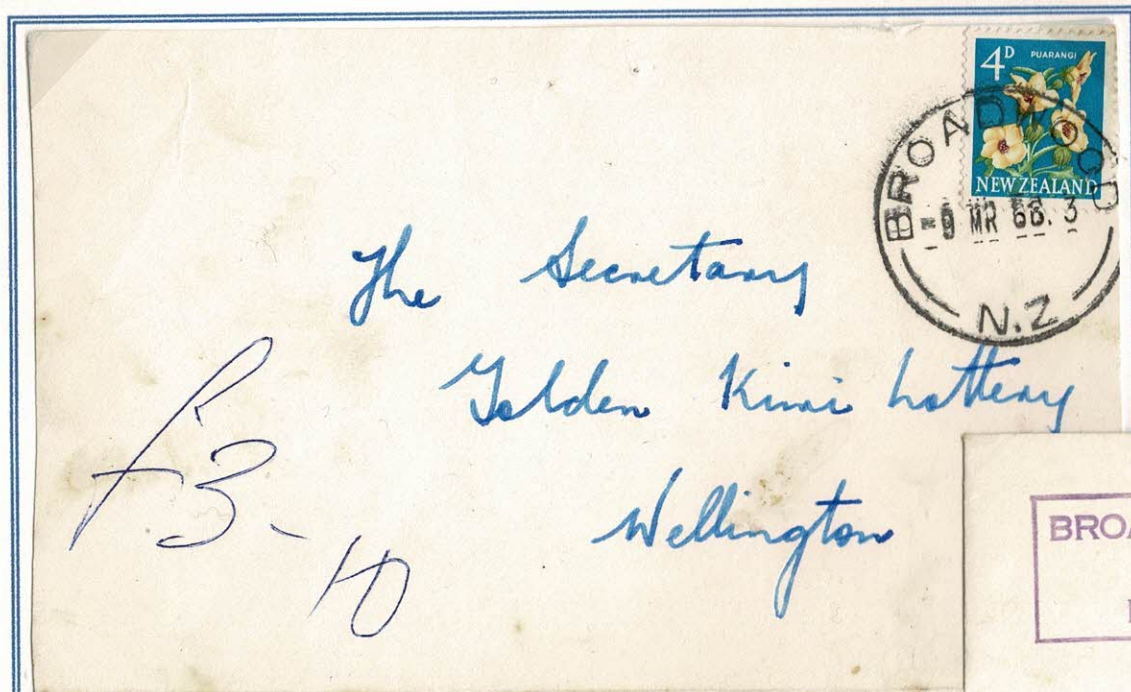


A. R. Marshall  
P. O. Box 7  
Otorohanga

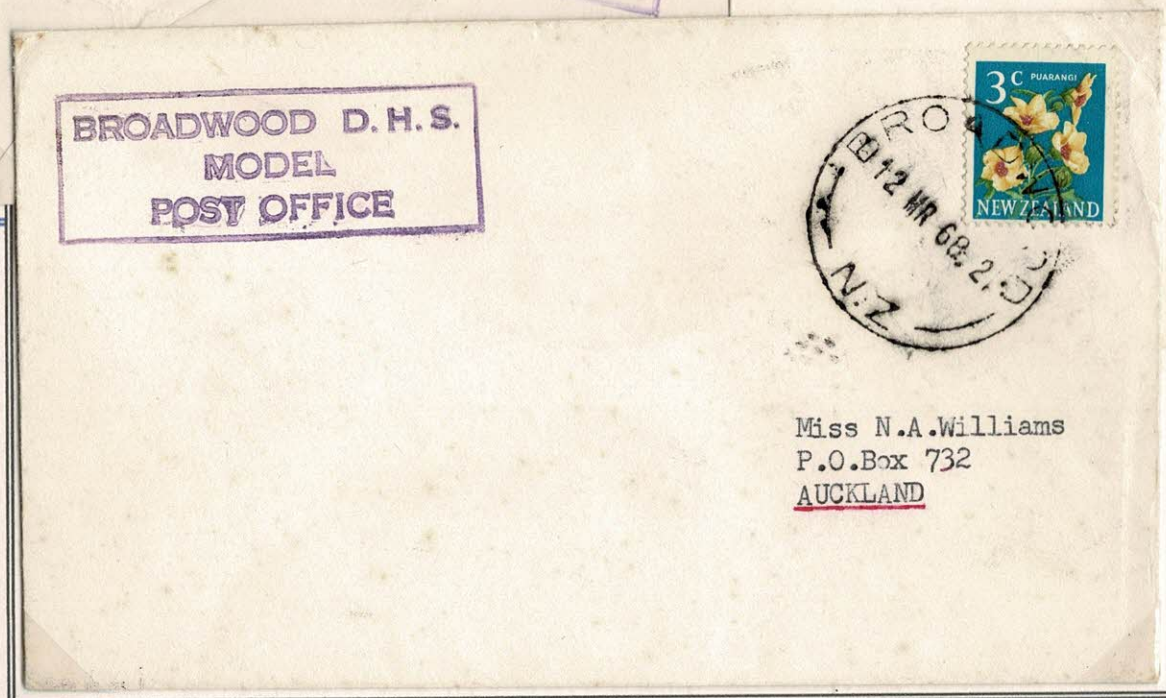
CENTENNIAL PROJECT COMPILED BY STANDARD 4, FORM 1 AND FORM 2, APITI PRIMARY SCHOOL

# BROADWOOD D.H.S MODEL POST OFFICE

Decile 1 Rural school 25Km north of Hokianga Harbour. School opened 1908, became DHS [District High School] 1952 and Area School 1973.  
Boxed 3-line cachet 55 mm x 19mm. Recorded 6 November 1963 to 1 March 1972.



Broadwood Model School cachet correctly applied on reverse of non-philatelic commercial envelope to Golden Kiwi Lottery, Wellington with Broadwood 9 MR 66 3



Mrs O C. Gawler  
146 Adams Road  
Ch. Ch. 6.

Philatelic collector envelopes with Broadwood Model School cachet on the front.

- Broadwood 11 NO 65 2 - Eric Gibbs
- Broadwood 29 MR 67 2 - Olwyn Gawler
- Broadwood 12 MR 68 2 - Miss N Williams

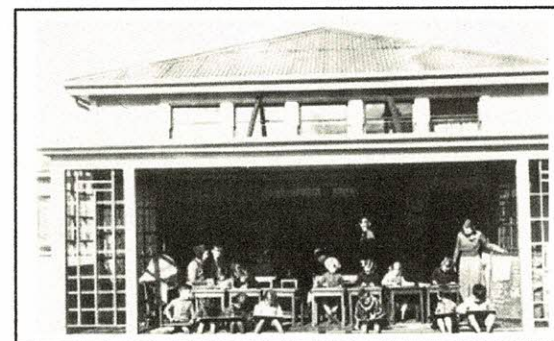
### CLIFTON TERRACE SCHOOL MODEL POST OFFICE

Small 3 classroom school, decile 8 with roll of 65-75, established 1922 on Clifton Terrace Kelburn in central Wellington

Cachet 3 line 20mm x 12mm. One example recorded 15 February 1960



Clifton Terrace Model School cachet with Wellington 11.45PM 15 FEB 1960 and "Campaign to Prevent Drowning" slogan. Philatelic Robin Startup. **Only example**



Clifton terrace model school 1937  
[from School Website]

### ELMWOOD SCHOOL POST OFFICE

Suburban Christchurch. School founded 1882 - District school 1908; Normal school 1954. Decile 10

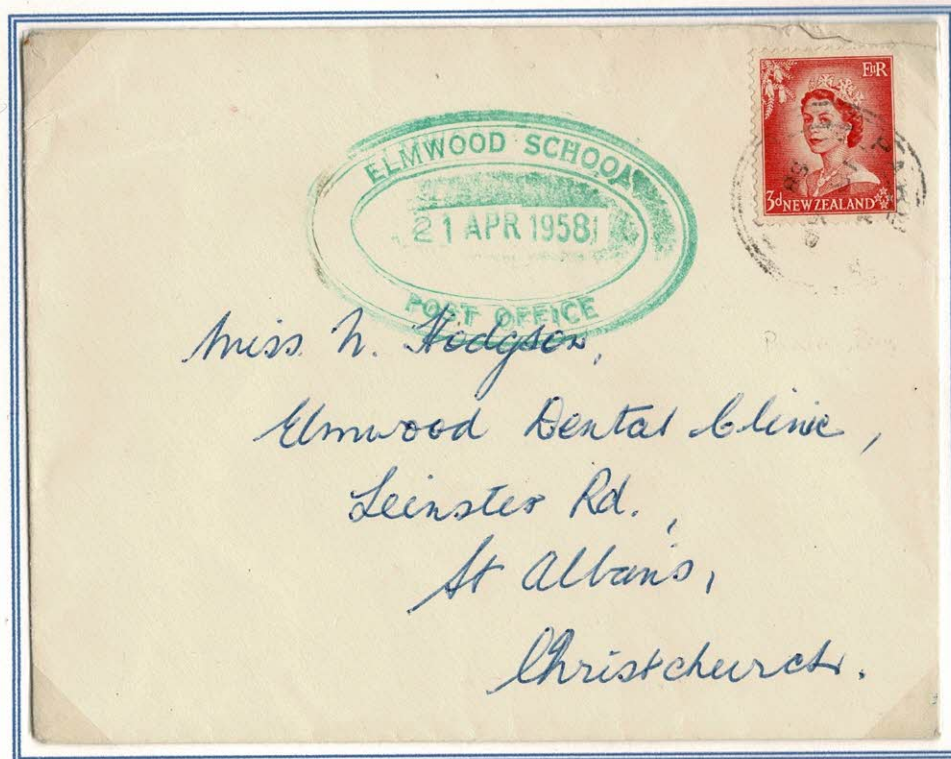
Oval cachet 51mm x 32mm in green - latest example is purple. Known 26 April 1957 to 10 March 1961. Believed open 1957-1962.

Second Model School Post Office established

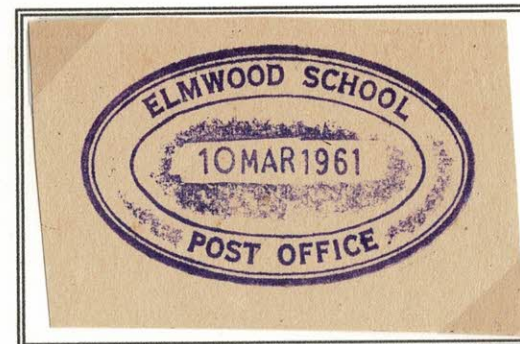
Non-Philatelic commercial airmail envelope to London with 1/9d paying the airmail rate with Christchurch Airmail datestamp 29 AP 57  
Stamps cancelled with green Elmwood School cachet 26 APR 1957 with similar strike on the back - Earliest recorded



ELMWOOD SCHOOL POST OFFICE

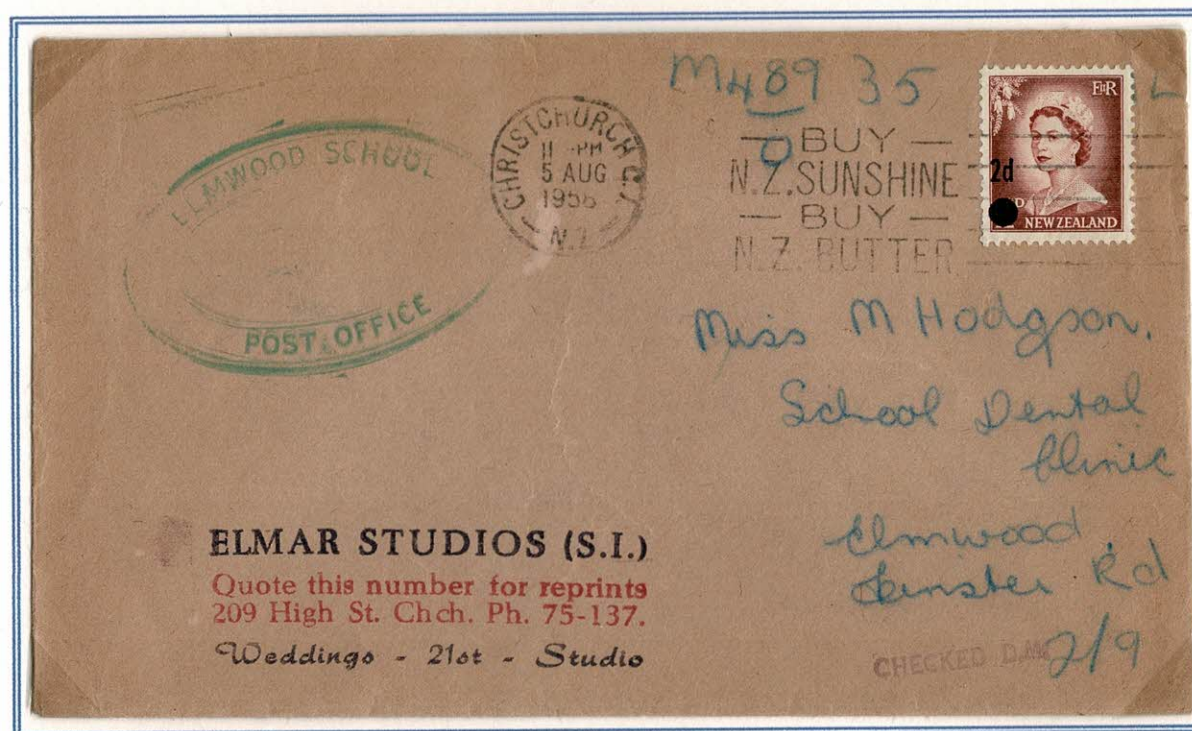


Non-philatelic mail. Elmwood School cachet as receiving marking 21 APR 1958 on envelope mailed from Parua Bay "H" Class 18 AP 58 [Whangarei District - office closed in 1988].



10 MAR 1961 - Latest recorded

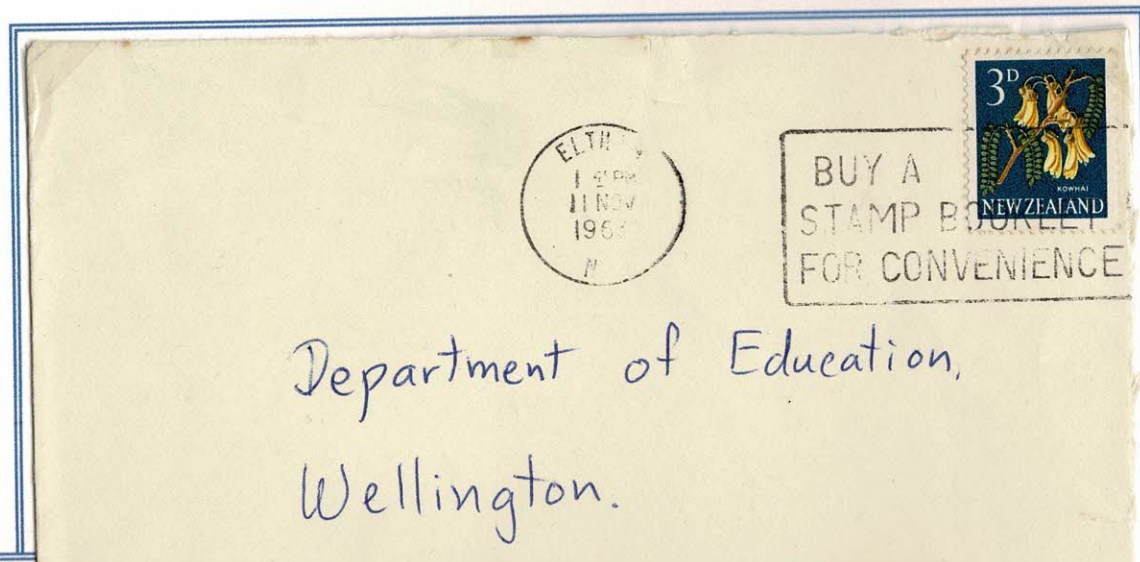
Elmwood School cachet as receiving marking on second class envelope mailed Christchurch 5 AUG 1958.



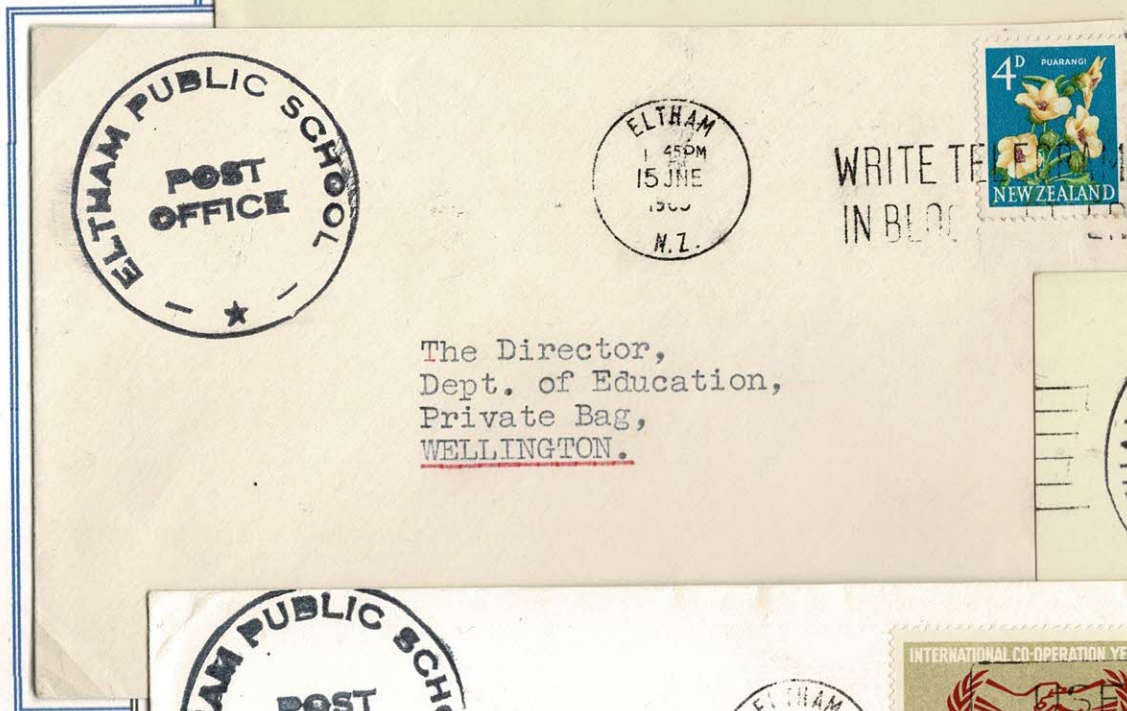
These two envelopes represent rare and unusual usage of Model School cachets in that they have been applied to mail addressed to the Elmwood school dental clinic. The Post Office advice on the use of the Model School cachets was to apply them on the reverse of the envelopes - a practice not usually complied with especially on philatelic mail sent for examples of the cachets. There is no mention in the advice about usage on incoming mail.

# ELTHAM PUBLIC SCHOOL POST OFFICE

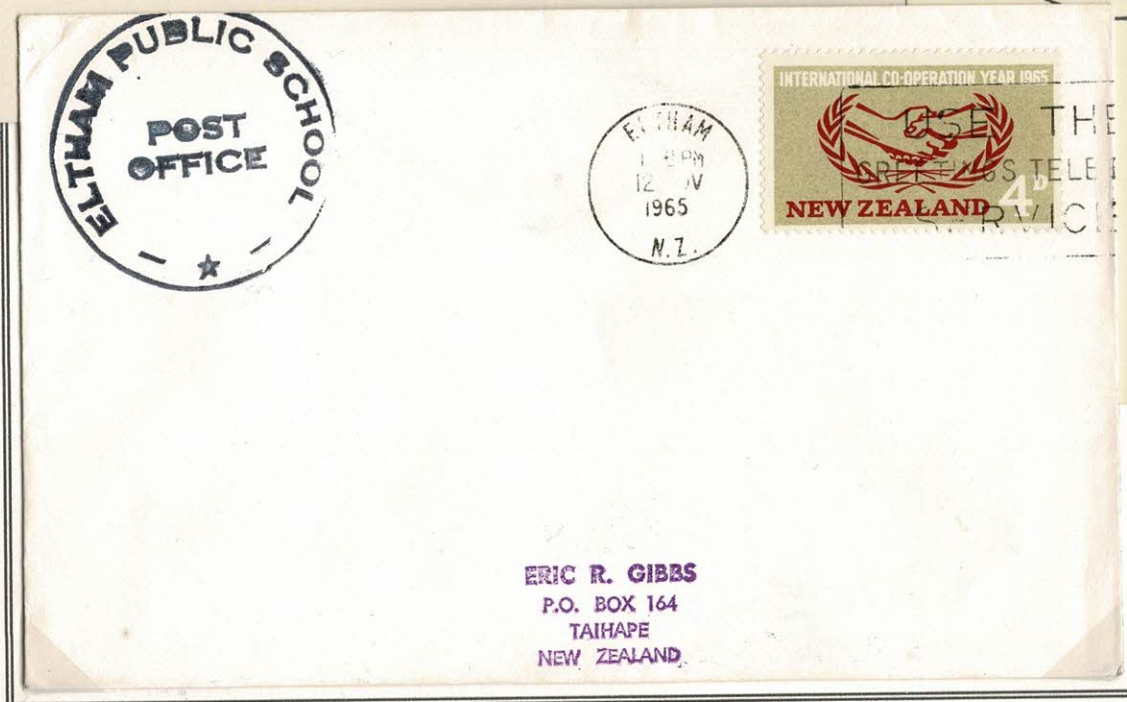
Decile 3 school founded 1886, South Taranaki. 50km south from New Plymouth.  
Circular cachet 37mm known 1 May 1959 to 22 September 1972. Believed started in August 1957.



Eltham Public School cachet correctly applied on the reverse of a non-philatelic envelope addressed to Education Department with Eltham 11 NOV 1963 slogan "Buy a Stamp Booklet for Convenience"



Incorrect application on non-philatelic envelope 15 JNE 1965



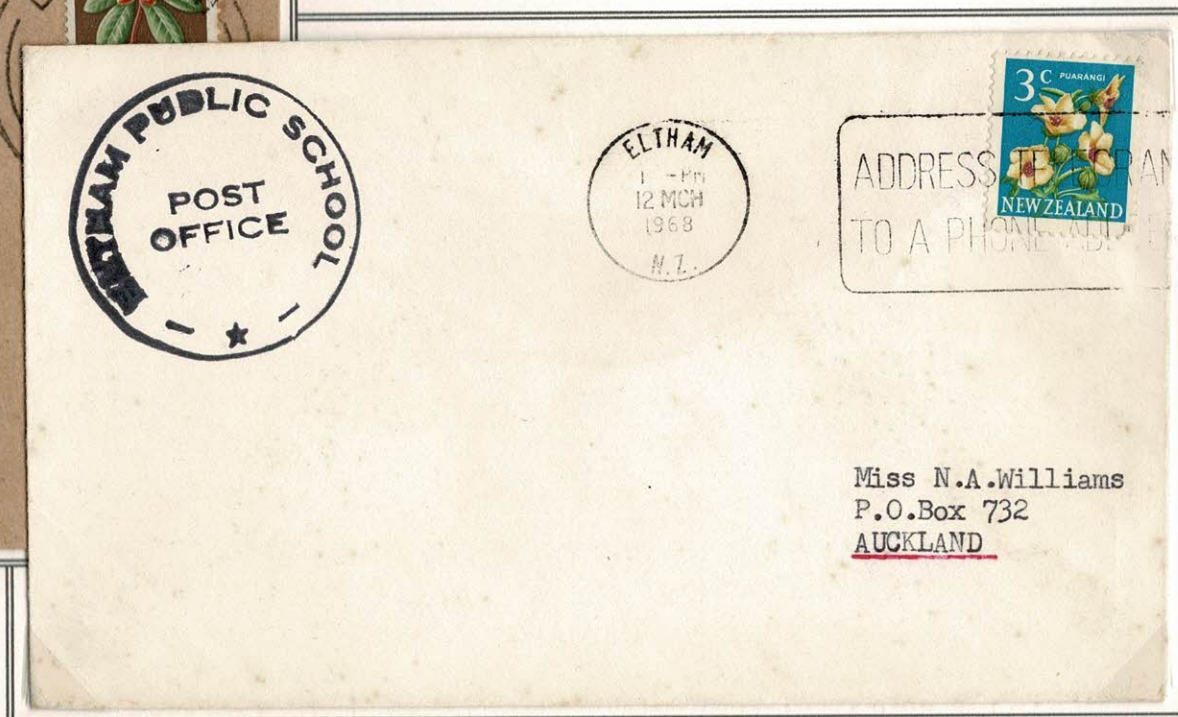
Incorrect application on philatelic mail

12 JNE 1965 - Postal History Society  
12 NOV 1965 - Eric Gibbs

ELTHAM PUBLIC SCHOOL POST OFFICE



Eltham Public School cachet with Eltham "C" class 35mm 22 SP 71  
Philatelic - Andrew McNiven



Eltham Public School cachet with Eltham 12 MCH 1968  
Philatelic - incorrect use on front

EPSOM NORMAL SCHOOL

Suburban Auckland. Opened 14 July 1980 - Last recorded use for Save the Children Fund 8 OCT 1981. 37mm cachet with separate date.



Epsom Normal School 14 JUL 1980 with  
Epsom "J" class 14 JL 80  
134 FDC processed.

Special Epsom School Post cachet [designed  
by S Langeveld aged 9] with One Tree Hill and  
Maori Tiki and 5-line cachet applied to FDC.

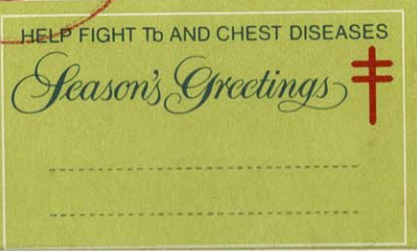
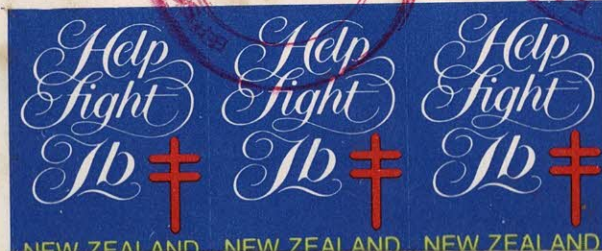
The postmaster - Gary Carbines - was very  
active philatelicly and many attractive  
envelopes were produced for the philatelic  
market.

First Day Cover  
Epsom School  
Model Post Office



J. Watts  
45 Teal Cres.  
Beachhaven  
Auckland 10

1 OCT 1980  
Commemorative  
Christmas FDC  
Tb stickers  
With cachets.  
Numbers 57



Parents Afternoon  
Epsom School  
Model Post Office  
21 August  
1980

LATE MAIL



21 AU 1980  
Special cover for  
Parents Afternoon  
with cachet  
Numbers 43



From David Skilling  
51 Aldersgate Rd  
Hillsborough  
Auck 4 N.Z.



This is the 1,000th external  
letter that has passed  
through this office since



14 July 1980.  
Postmaster

AUCKLAND HARBOUR BRIDGE, New Zealand  
Looking from Birniehead in the early evening, the lights of the bridge  
and the city of Auckland are reflected in the calm waters of the Waitemata  
Harbour.

P1144  
POST

TO David Skilling  
51 Aldersgate Rd  
Hillsborough  
Auck 4 N.Z.

PICTORIAL PUBLICATIONS LTD  
HASTINGS ... NEW ZEALAND

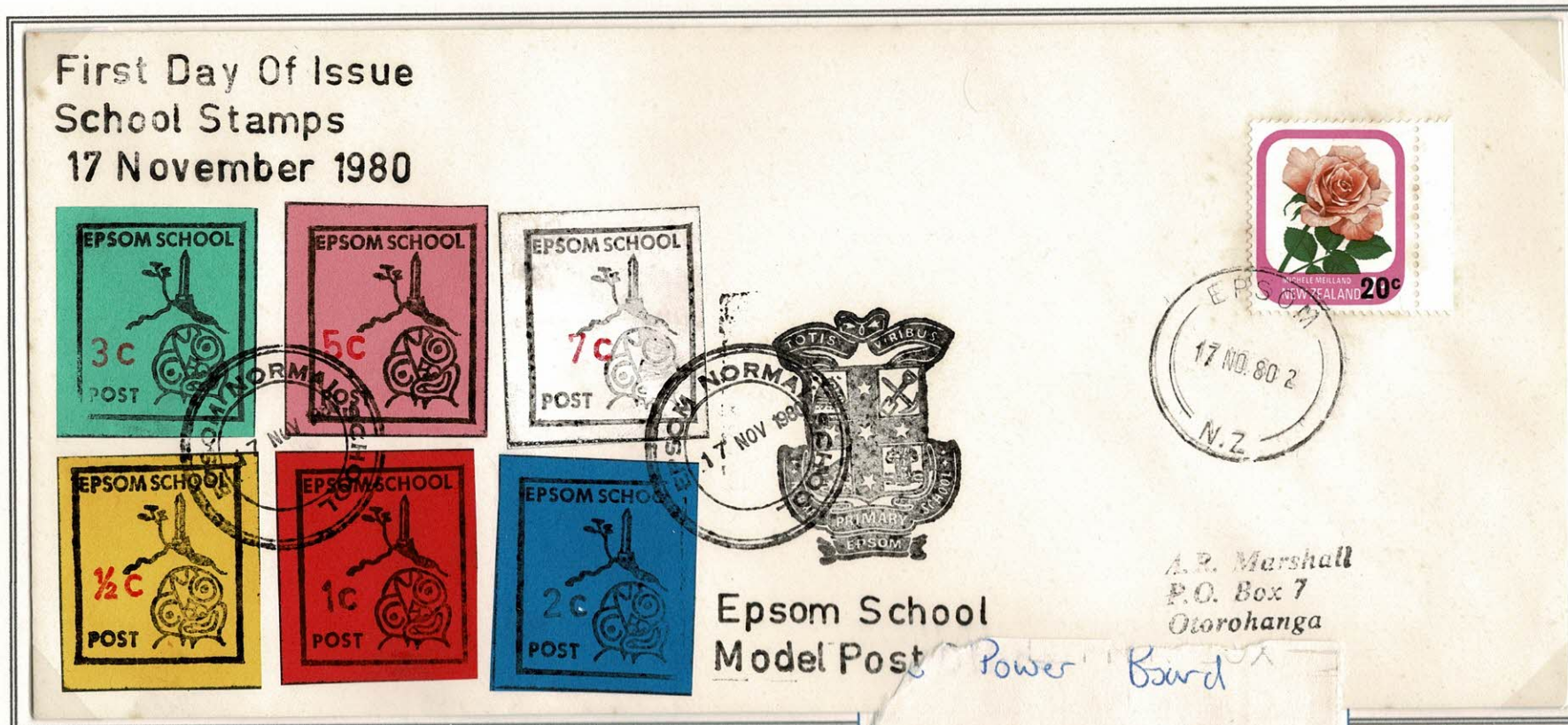
13 OCT 1980  
Pupil letter to himself with handstruck cachet cancelled in red  
20c stamps cancelled Epsom 13 OC 80

Annotated and signed by postmaster:  
"This is the 1,000th external letter that has passed  
through this office since 14 July 1980."



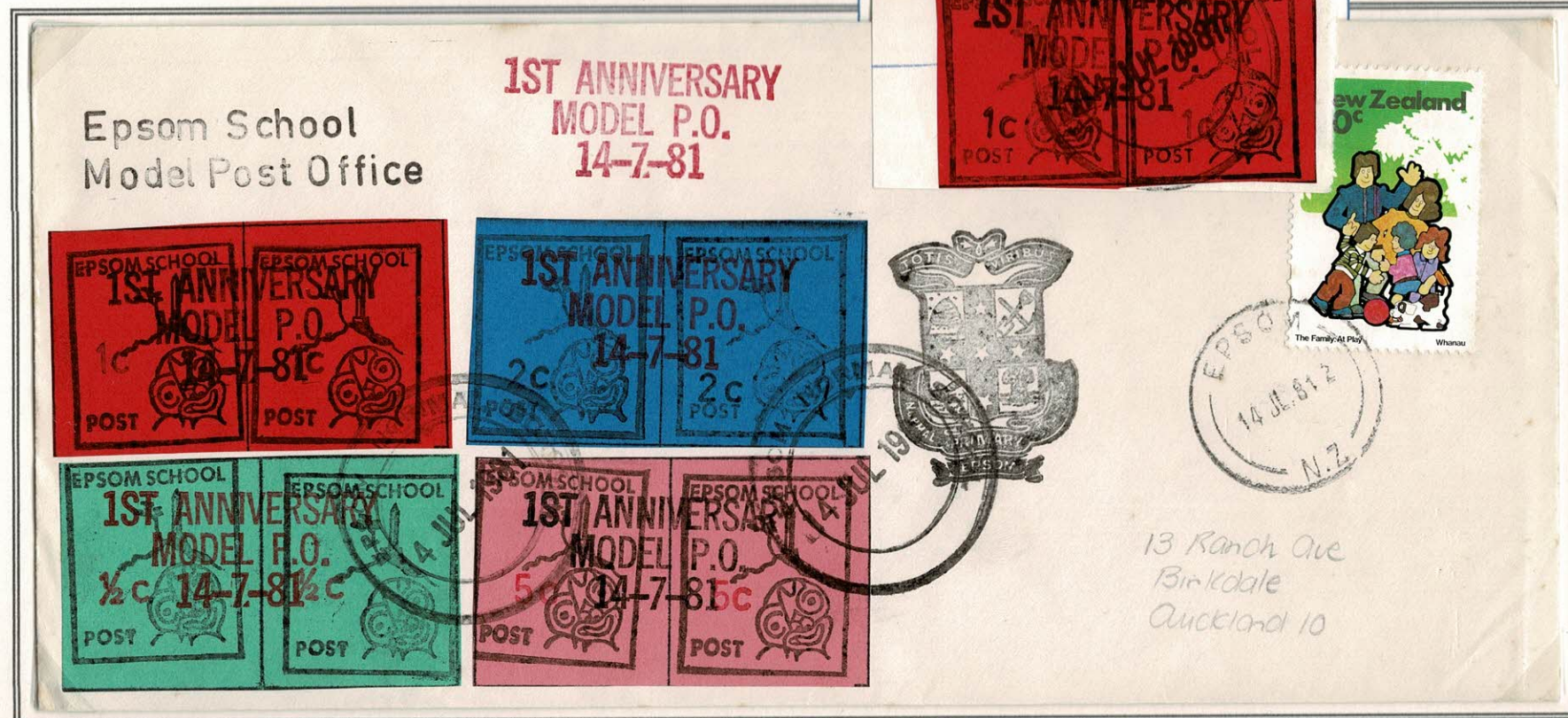
EPSOM NORMAL SCHOOL

From 17 November 1980, a small charge was made and a set of 6 local stamps with the same design was produced with handstruck values from 1/2c to 7c.  
 A smaller 30mm circular cachet] Epsom Normal School was used in black



1st Anniversary Model P O 14-7-81. cachet applied in red on envelope and in black on pairs of the local stamps. Numbers unknown

Non-Philatelic piece



EPSOM NORMAL SCHOOL

Conservation Week 1 to 9 August - 7 AUG 1981 [numbers unknown]

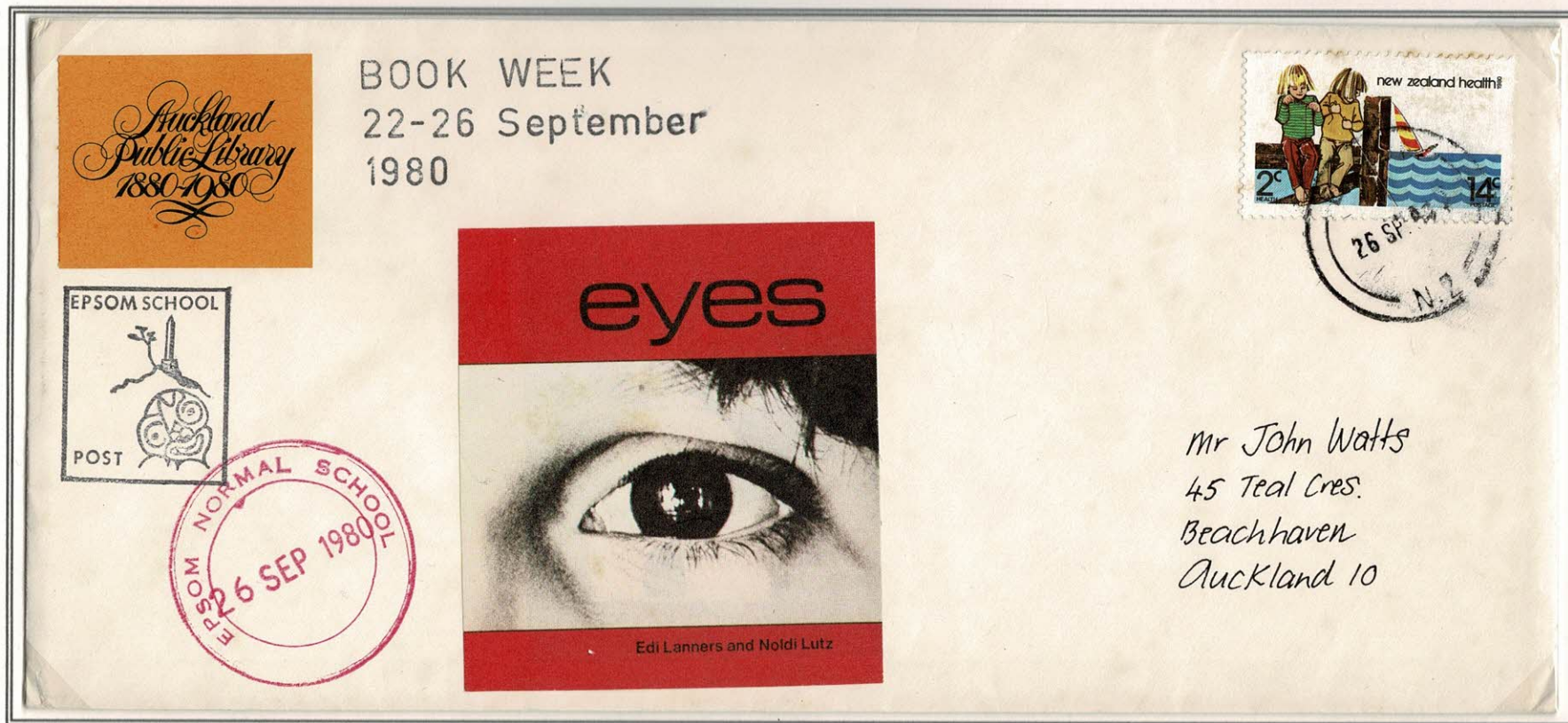


Music Week 4-6 August 1981 - 7 AUG 1981 [numbers unknown]



EPSOM NORMAL SCHOOL

Book Week 22-26 September 1980 - 26 SEP 1980 [numbers 107]



Save the Children Fund 8 October 1981 [numbers unknown] Last use



Envelope has annotation from Postmaster:

"Please note: Model PO opened only on this day for special occasion. Closed 22-Aug '81. Will probably reopen May '82 G.W. Carbines."

# HANGATIKI SCHOOL MODEL POST OFFICE

On Hangatiki East Road off SH3, 8Km south Otorohanga. Scholl since closed. 2-line cachet 40mm x 8mm - known 1 July 1965 to 19 JA 1966

Philatelic [Gibbs] with Auckland Airport cancellation 19 JA 66 - latest recorded

Philatelic [Doris Simmons] with Hangatiki cancellation 25 JL 1965. Post Office closed 1988

HANGATIKI SCHOOL  
MODEL POST OFFICE.



HANGATIKI SCHOOL  
MODEL POST OFFICE.



ERIC R. GIBBS  
P.O. BOX 164  
TAIHAPE  
NEW ZEALAND

*Mrs D. Simmons,  
14 Bates St.  
Rosllyn, Dunedin.*

3-line cachet 32mm x 8mm known first day 5 September 1977 - to 14 December 1977. Established by teacher Bevan Gibson - secretary Otorohanga Stamp Club - children made lino cut cachets for covers

Hangatiki 5 SP 77  
First Day

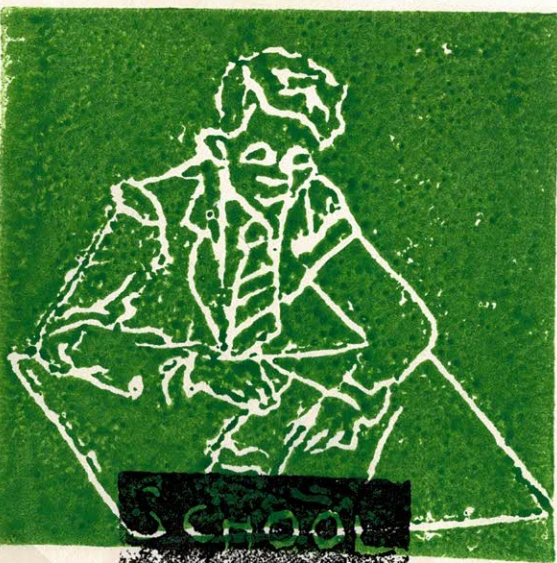
HANGATIKI



A. R. Marshall  
P.O. Box 7  
Otorohanga

HANGATIKI SCHOOL  
MODEL  
POST OFFICE

HANGATIKI



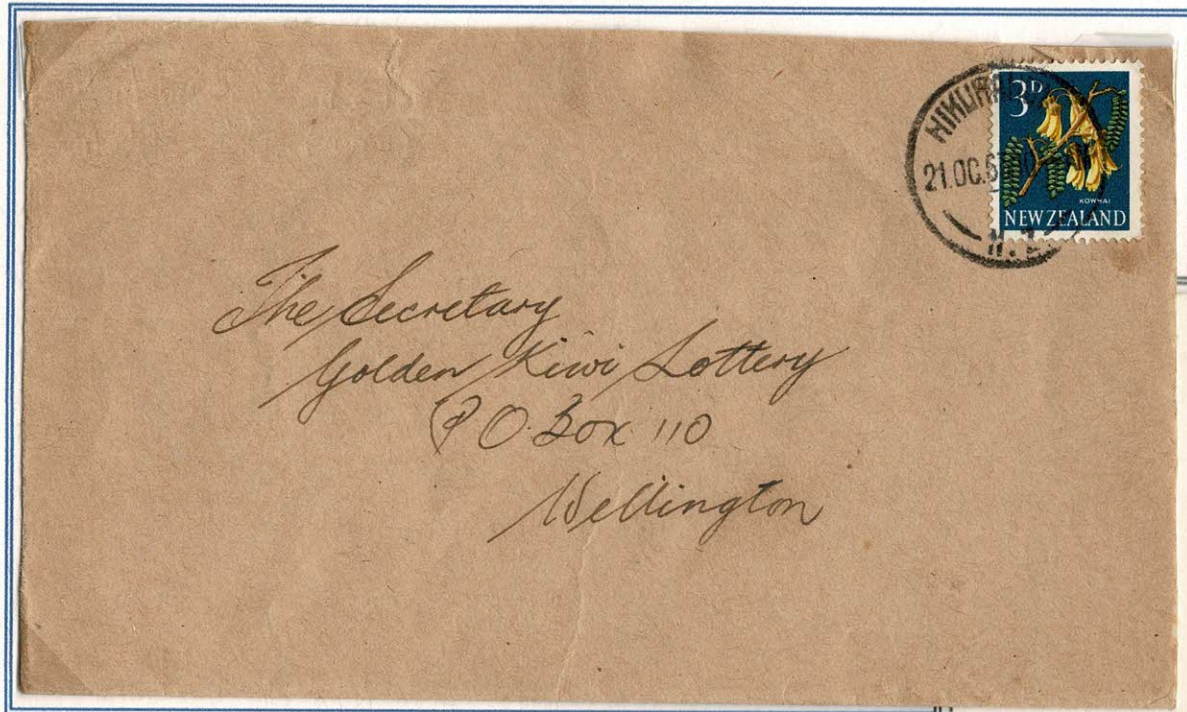
*Mr. A. Jackson  
Box 27-208  
Wellington*

HANGATIKI SCHOOL  
MODEL  
POST OFFICE

Hangatiki 14 DE  
77  
latest date

## HIKURANGI PRIMARY SCHOOL MODEL POST OFFICE

Hikurangi 17km north of Whangarei. Currently a decile 1 school with nearly 200 pupils, the school opened in 1883 and moved site in 1917. It was replaced in 1972.  
3-line cachet 36mm x 11mm - Known 20 November 1962 - 13 December 1966



Non-philatelic commercial correctly used with Model School cachet on reverse with Hikurangi "C" class 21 OC 63.

Philatelic use with Hikurangi "C" class 12 NO 65

### HIKURANGI SCHOOL MODEL POST OFFICE

Used at the replacement school

2-line boxed cachet 67mm x 8mm -  
Known 25 FE 1972 - 28 FE 1986

Philatelic use with Hikurangi 12 JL 85



## HIKURANGI SCHOOL MODEL POST OFFICE

**2-line boxed cachet 62mm x 7mm**

Known 10 March 1990 to 10 March 1996

Philatelic use with  
**Hikurangi 23 MAR 1990**  
and Post Early and Often During the Day.

The latest recorded of this Hikurangi  
School Model Post Office 10 March 1996  
is the **latest date recorded from any  
Model School Post Offices.**



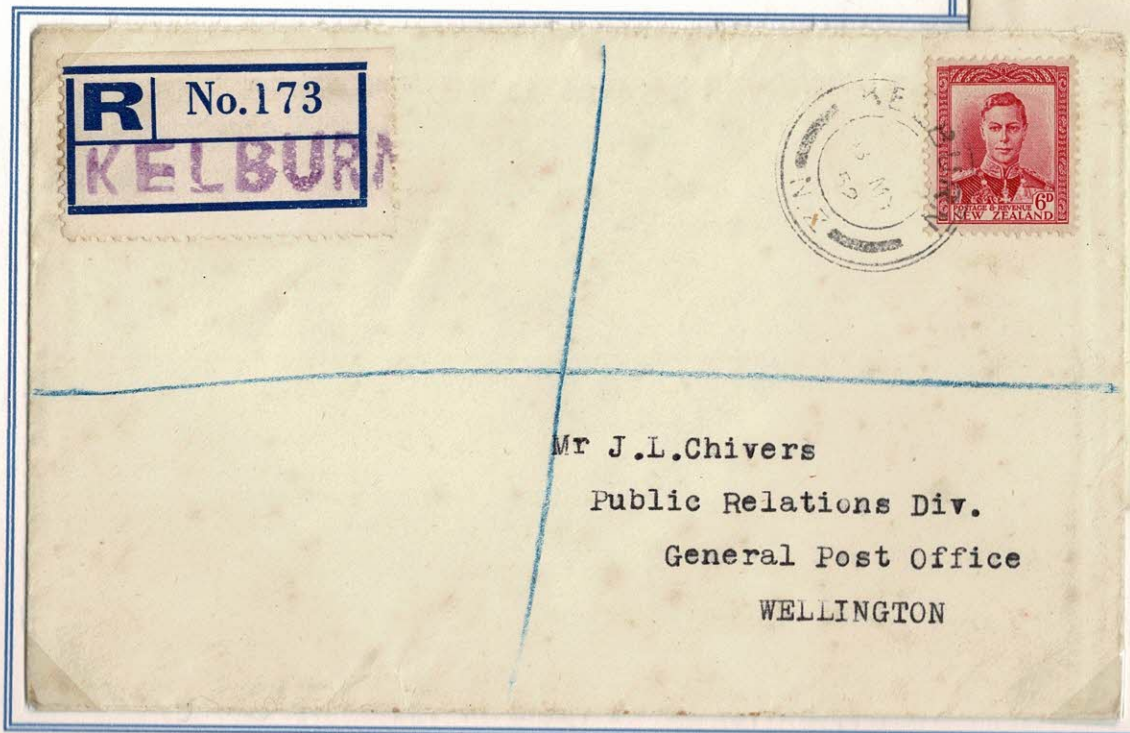
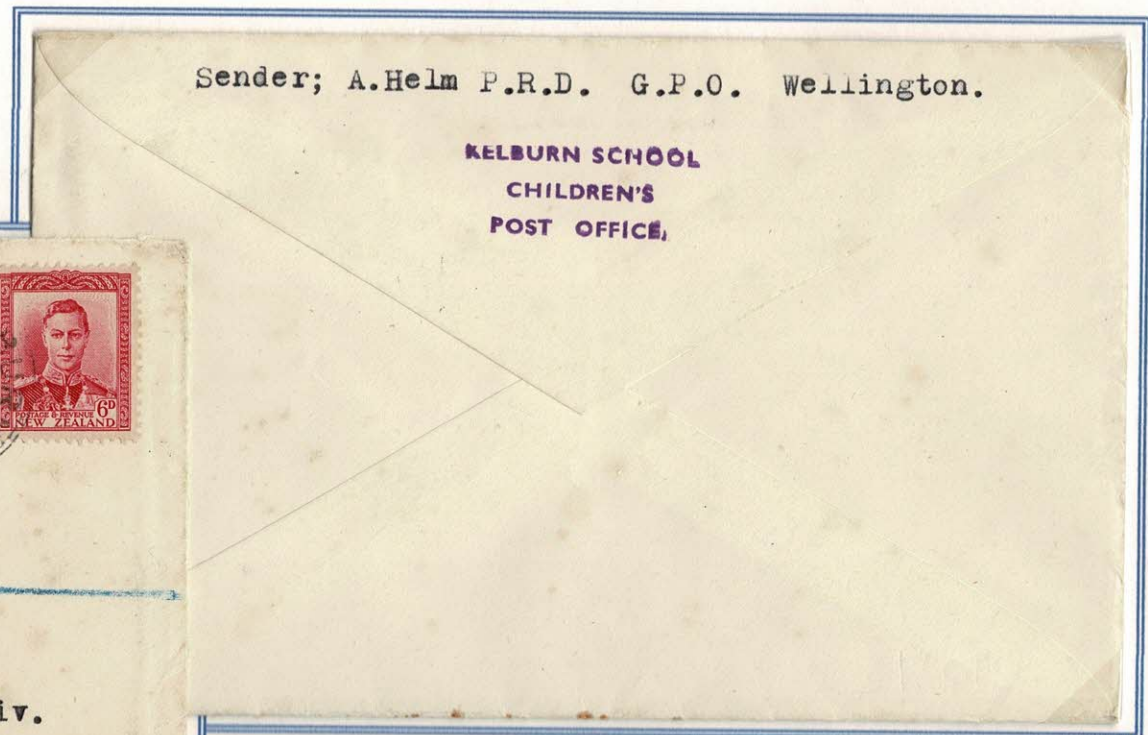
## KELBURN SCHOOL CHILDREN'S POST OFFICE

Kelburn is an inner suburb in Wellington. The School was established in May 1914.

This was the **first School Model Post Office to be opened - 3-line cachet 31mm x 13mm** known First Day 8 May 1952 to 20 April 1956.

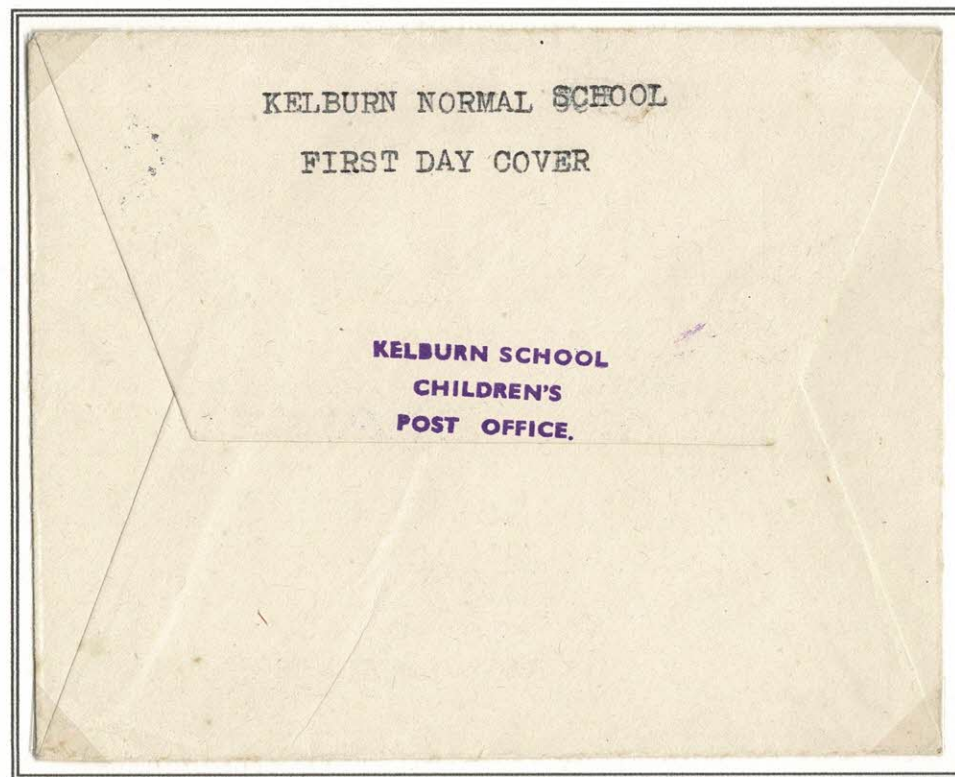
The cachet is used correctly on the reverse of the envelope in all examples seen..

**First Day Cover Kelburn 8 MY 52** from A Helm Public  
Relations Division GPO Wellington.  
Registered Kelburn label 173 with 6d [4d Registration+ 2d  
postage]



**Kelburn 8 MY 52**  
**First Day** with 2d postage to Mr Chivers at Public Relations  
Division General Post Office Wellington

KELBURN SCHOOL CHILDREN'S POST OFFICE



First Day Covers Kelburn "H" Class 8 MY 52 with cachet on the reverse and Kelburn Normal School circular purple cachet [no other examples known]



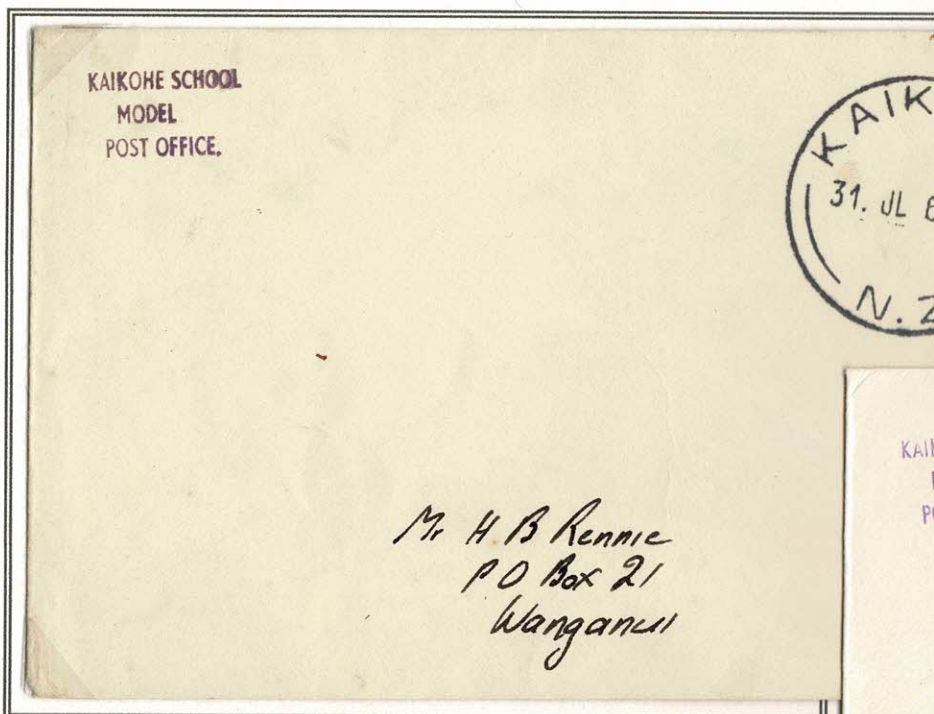
Kelburn 29 MY 52 with cachet on reverse



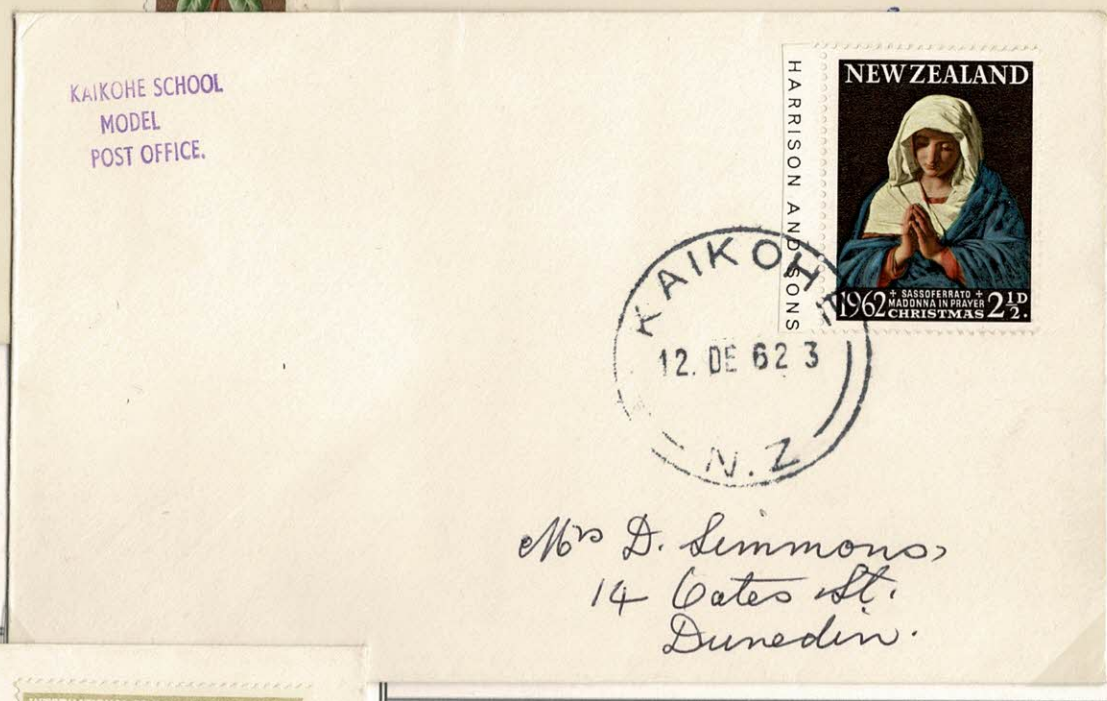
Kelburn 9 JL 52 with cachet on reverse of both 1955 Exhibition commemorative envelopes

## KAIKOHE SCHOOL MODEL POST OFFICE

Small decile 1 school in Northland. **Small 3-line 20 x12mm cachet** recorded July 31, 1961 to November 20, 1963. Newspaper reported the opening day July 25th.



*Mr. H B Rennie  
P.O. Box 21  
Wanganui*



*Mrs D. Simmons,  
14 Gates St.  
Dunedin.*



**Kaikohe School Model Post Office** cachet on front of each of these philatelic envelopes.

**Kaikohe 31 JL 61** [Rennie]

**Kaikohe 3 AU 61** to Doris Simmons

**Kaikohe 12 DE 62** [Doris Simmons]



**ERIC R. GIBBS**  
P.O. BOX 164  
TAIHAPE  
NEW ZEALAND

## KAIKOHE PRIMARY SCHOOL MODEL POST OFFICE

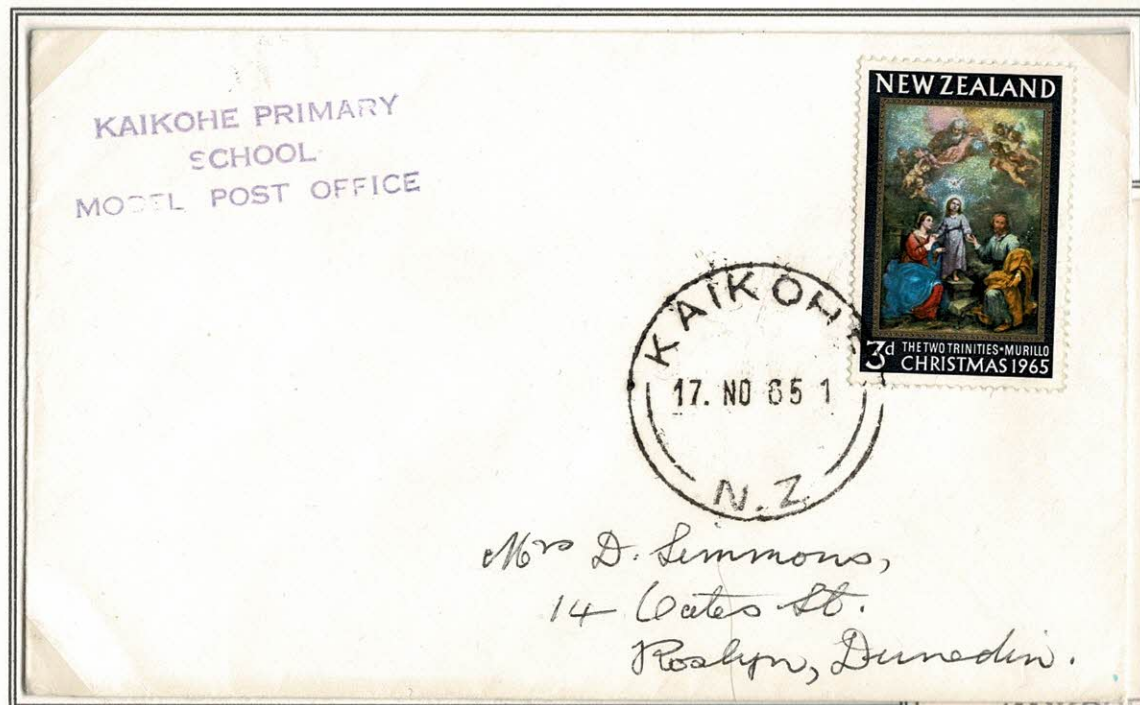
The Primary school was replaced by Kaikohe Intermediate 1969 when Kaikohe East and Kaikohe West primary schools opened.

**Large 3-line 46 x 12mm cachet** known November 15, 1965 to March 12, 1968. All sighted covers have the cachet both front and back.

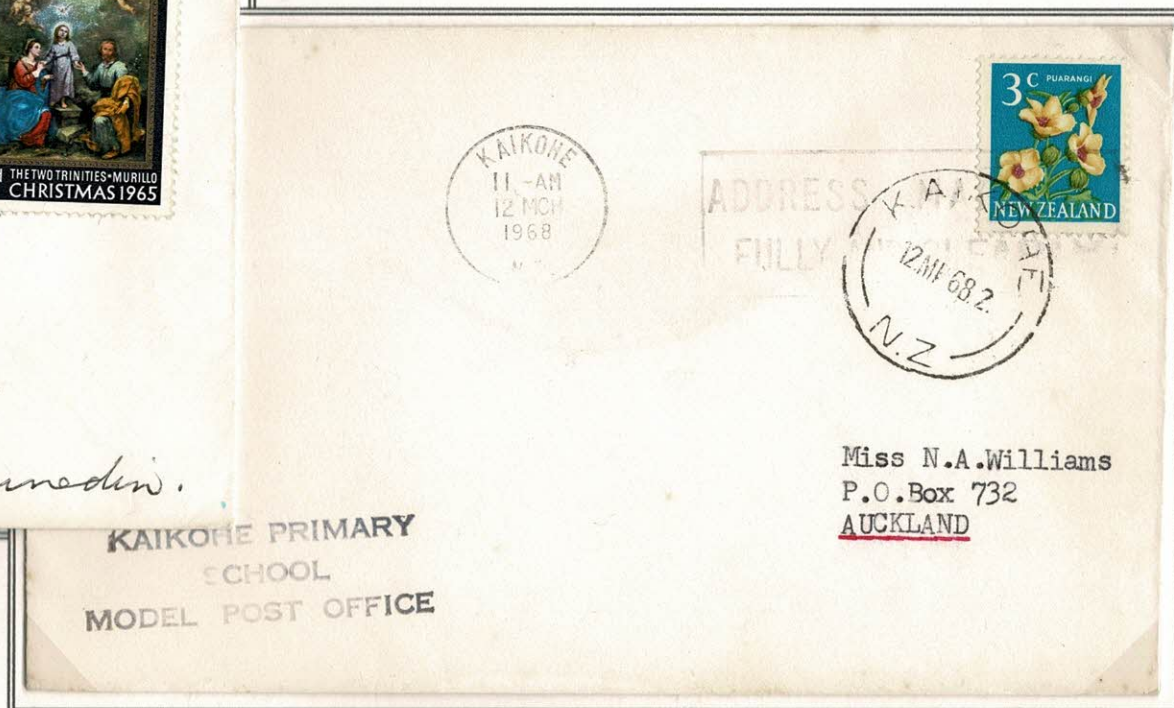
Philatelic cover **Kaikohe 15 NO 65** [earliest]



KAIKOHE PRIMARY SCHOOL MODEL POST OFFICE



Philatelic Cover [Simmons] **Kaikohe 17 NO 65**



Philatelic Cover [Williams] **Kaikohe 12 MCH 1968**  
machine cancellation and **Kaikohe "J" Class 12 MR 68.**  
**Latest recorded date**

Philatelic Cover [Postal History Society] **Kaikohe "J" Class 4 AP 67 with cachet front and back.**



## SCHOOL POST OFFICE MAMAKU

School established 1910 [initially at the Mill] 4km south of SH 5 on the high point of the Rotorua branch railway line [since closed] Present role about 40 children.

**Circular 34mm cachet** now in Post office archives. Known 16 March 1965 to 10 February 1976.



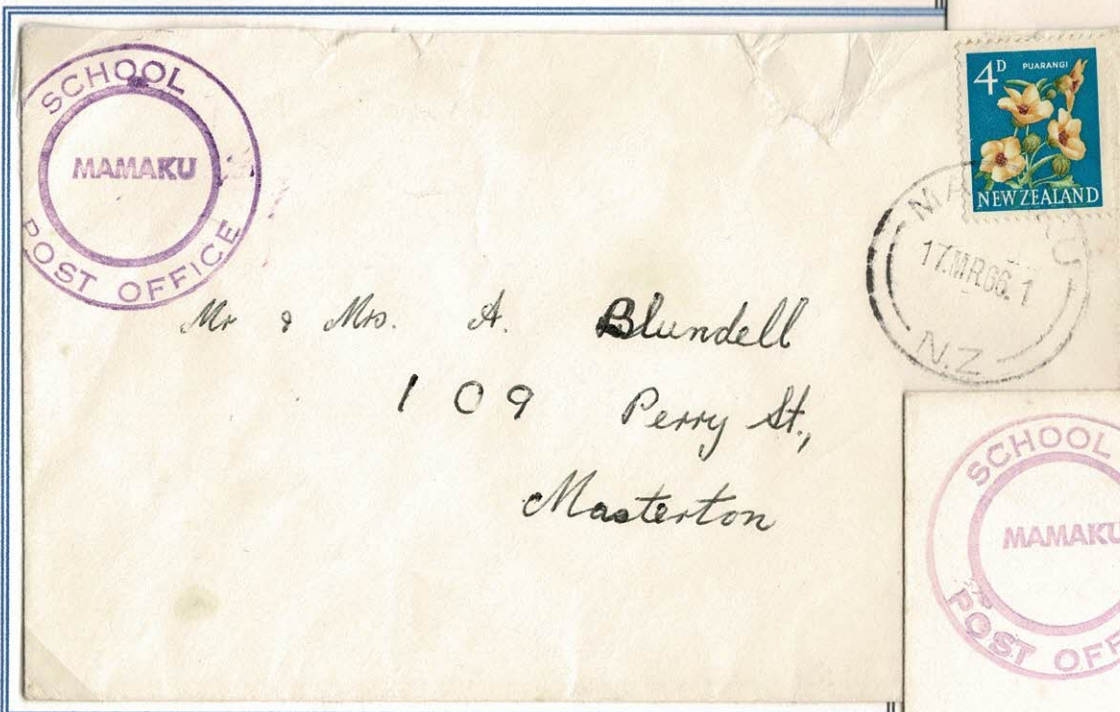
Philatelic envelopes with **Mamaku School**

**Post Office** cachet on front

Mamaku 2 AP 65 - [Brookelsby]

Mamaku 12 No 65 - [Gibbs]

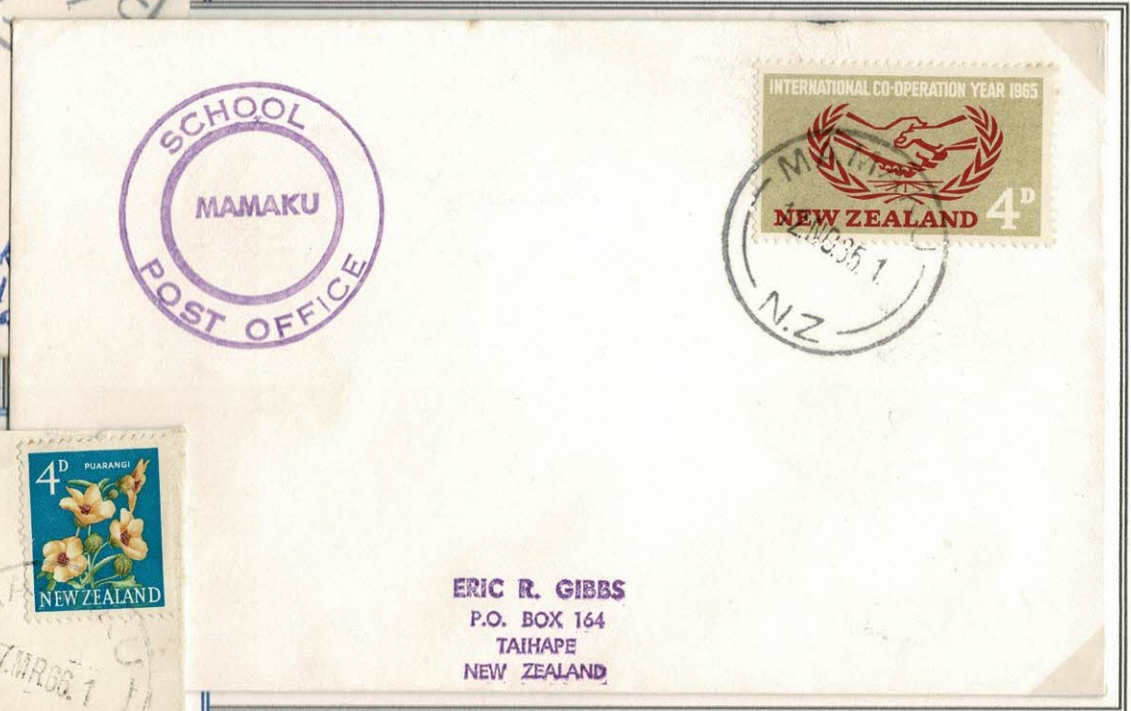
Mamaku 12 MR 68 - [Williams]



**Non-philatelic commercial envelope with Mamaku School**

**Post Office** with cachet on front

**Mamaku 17 MR 68 to Masterton**



Miss N.A. Williams

P.O. Box 732

AUCKLAND

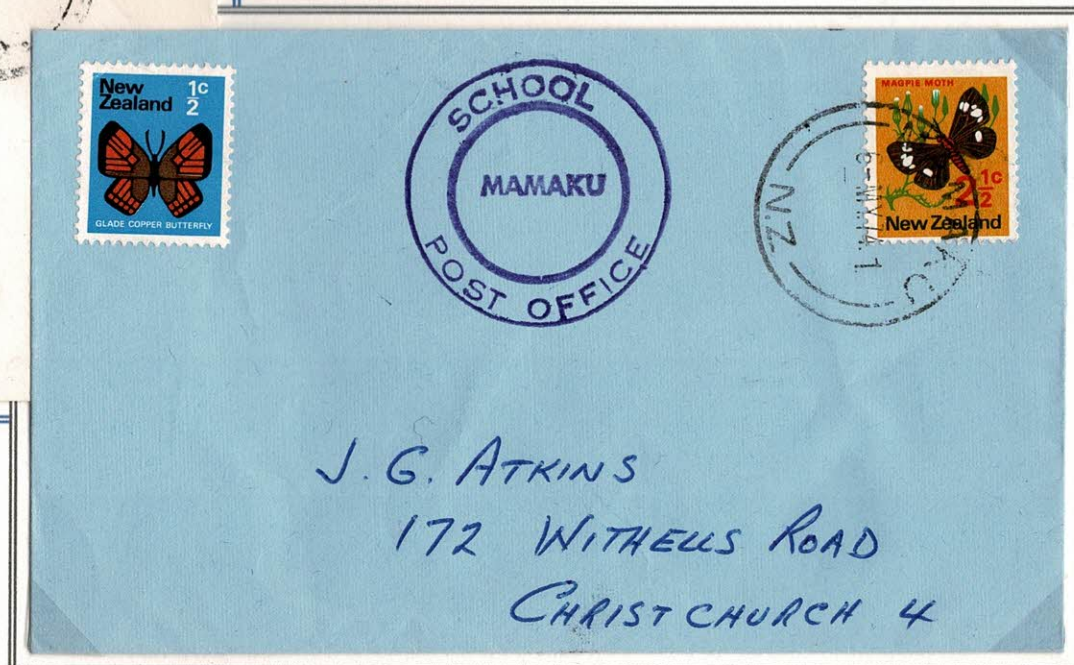
SCHOOL POST OFFICE MAMAKU

Registered Mamaku 31 OC 66 with Christchurch Registered 1 NO 66. Signed Glenys Baker Postmistress  
Mrs Hunt - an early collector of postal history.



Non-Philatelic commercial cover [from a pupil]

Mamaku 20 NO 76 with  
School Post Office Mamaku cachet on front



Philatelic cover Mamaku 6 MY 74

# MAROMAKU SCHOOL MODEL POST OFFICE

Decile 3 school 5 km NW Towai and 40km North Whangarei.

Small - 21mm - 3-lined purple cachet known November 12, 1963 to December 3, 1963

Maromaku 3 DE 63 [latest date] - non-philatelic



Boxed 3-line cachet 30mm x 15mm. Known 17 September 1965 to 26 June 1969. All sighted examples have cachet on front and back



Maromaku Philatelic 20 SP 65

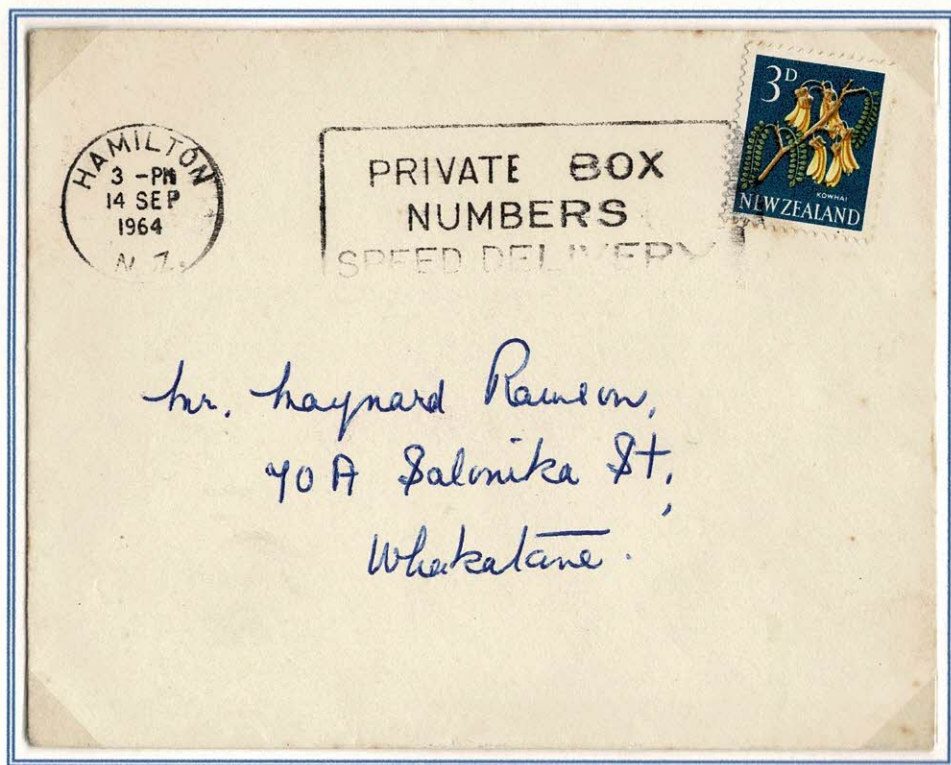


The 7 April 1967 date had **manuscript correction** from March - a datestamp Error. Philatelic card from Postal History Society sending

**NEWSTEAD MODEL COUNTRY SCHOOL MODEL POST OFFICE**

Small rural school on 7km on Hamilton-Morrinsville Road. Newstead Post Office closed 1937

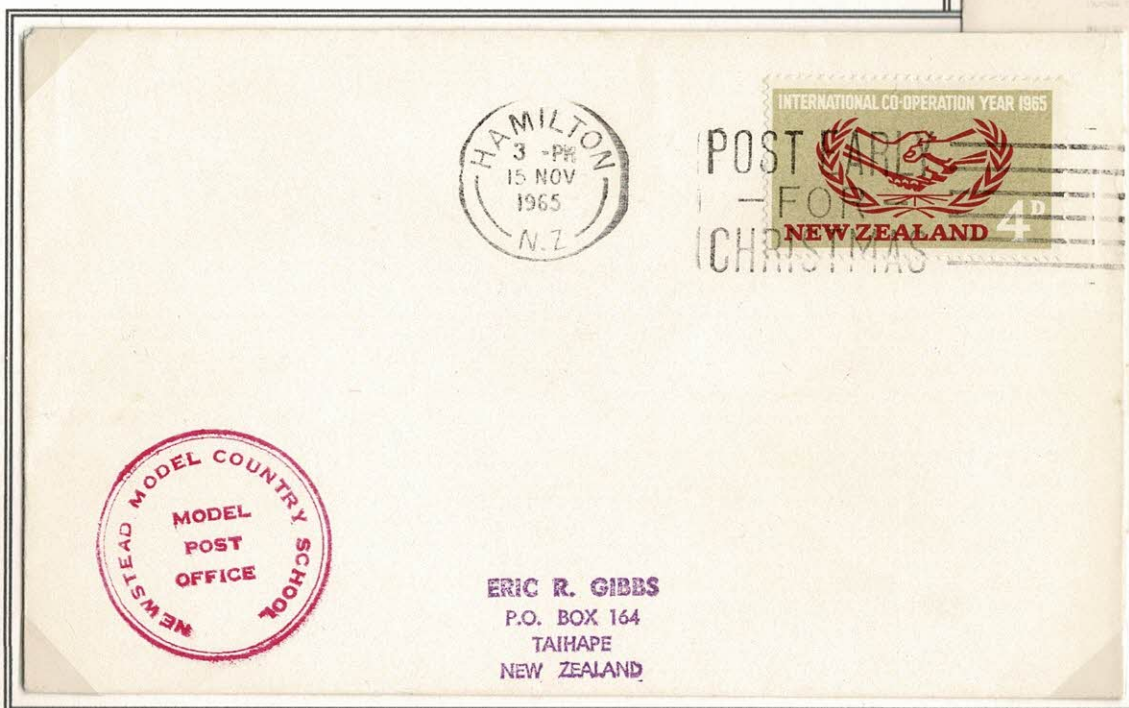
**Circular 30.5mm cachet** Known 14 September 1964 to 23 September 1970. All examples sighted are in red



**Non-philatelic commercial envelope with Newstead cachet** correctly on reverse with Hamilton machine cancellation **14 SEP 1964**.  
**Earliest recorded**



**Newstead cachet with Hamilton "C" Class 24 JE 65**  
[Postal History Society sending]

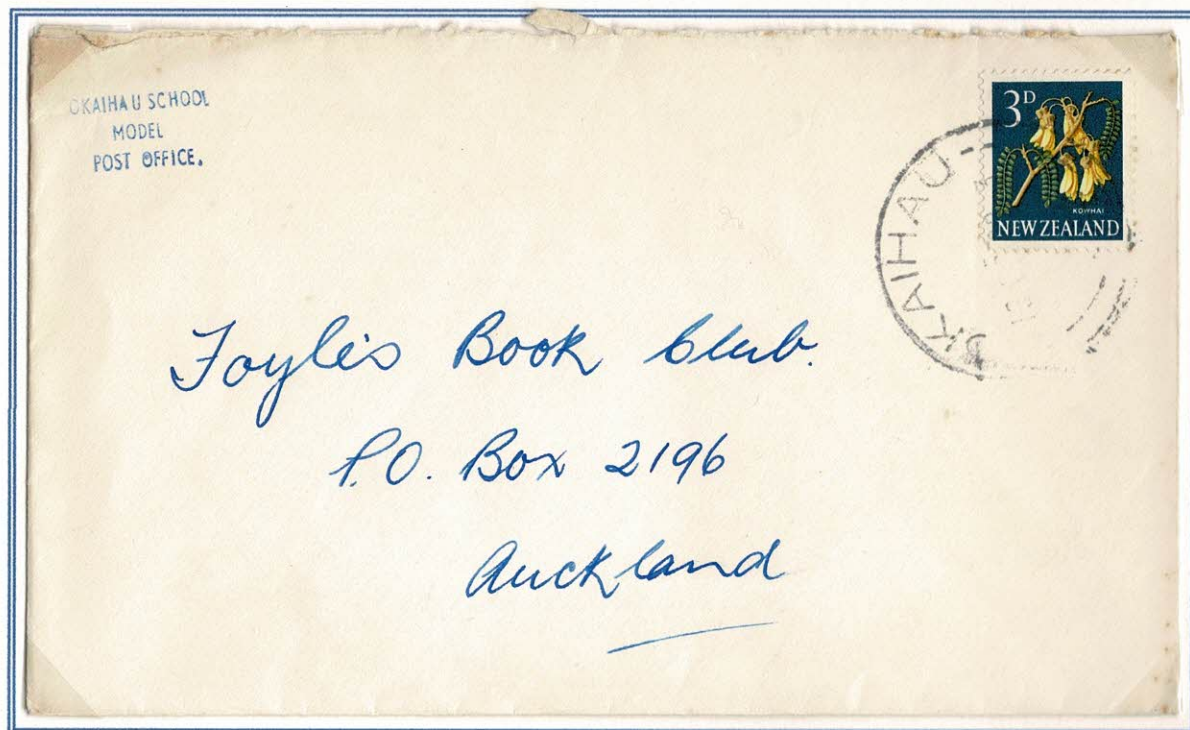


**Newstead cachet with Hamilton machine 15 NOV 1965**  
Cachets applied front and back. Philatelic [Gibbs]



### OKAIHAU SCHOOL MODEL POST OFFICE

31 km north Kawakawa in Northland. Primary School established 1874, replaced 1889 became a consolidated school in 1938 and District High School [DHS] in 1947 with separate primary school. **Small - 18mm - 3-line cachet impressed in blue, known November 19, 1962 only**



**Non-philatelic commercial envelope to Auckland with Okaihau 12 NO 62 - only example known of small 3-lined cachet**

### OKAIHAU D.H.S POST OFFICE

**50mm x 15mm 2-line boxed cachet, known 1966 to June 1 1967. Examples known show cachet across stamp or stationery imprint**

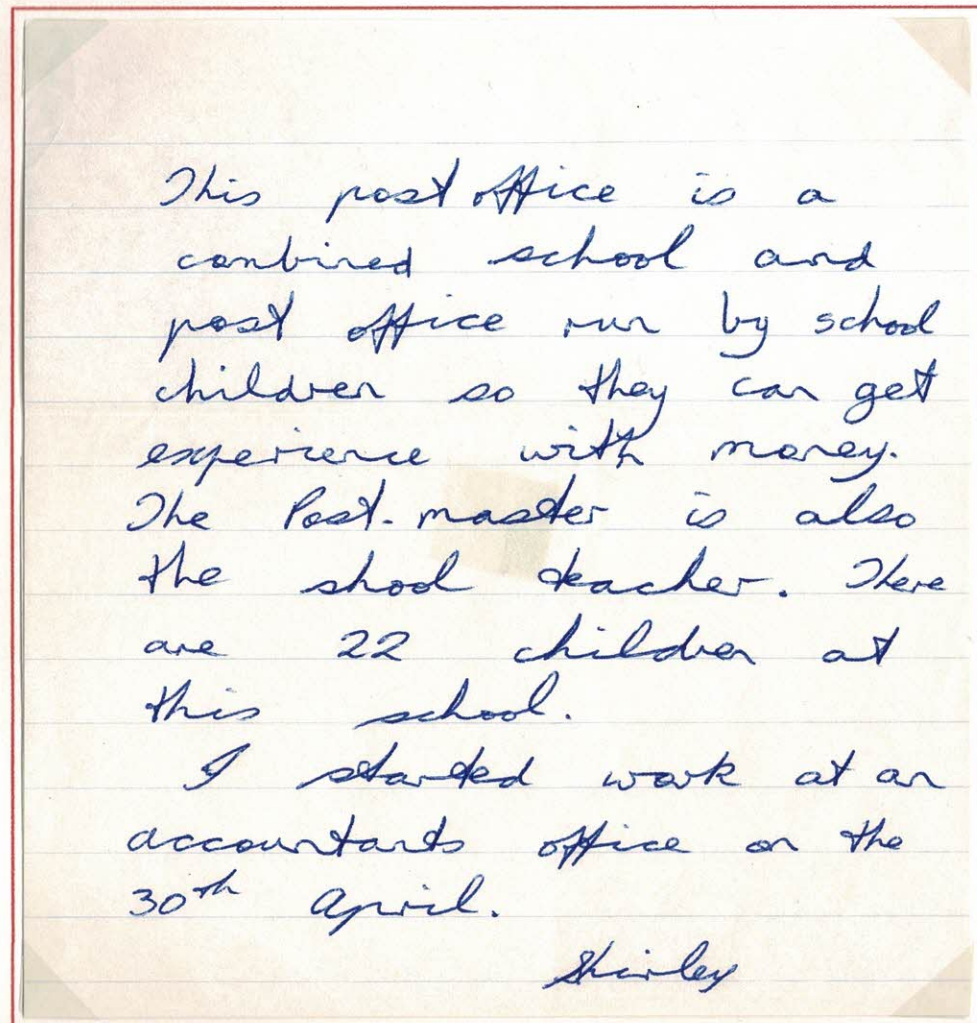
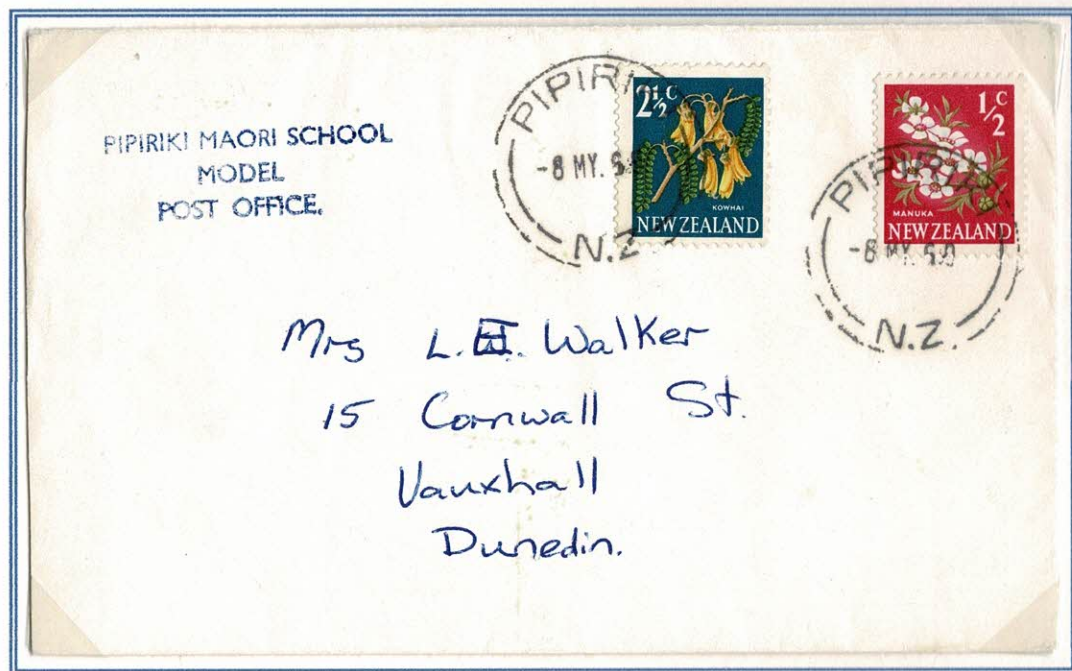
**Okaihau cachet across postage stamp**  
1966 - philatelic mail - A H Voyce



**Okaihau cachet across postage stamp**  
With Okaihau "J" Class 1JE 67 -  
latest recorded date.

**PIPIRIKI MAORI SCHOOL MODEL POST OFFICE**

Pipiriki is 80km NE Wanganui on the Wanganui River. Post Office closed 1973. 3-line cachet 38mm x 12mm. Known 8 May 1969 to 13 December 1971 - the word "MAORI" was removed before 22 September 1971



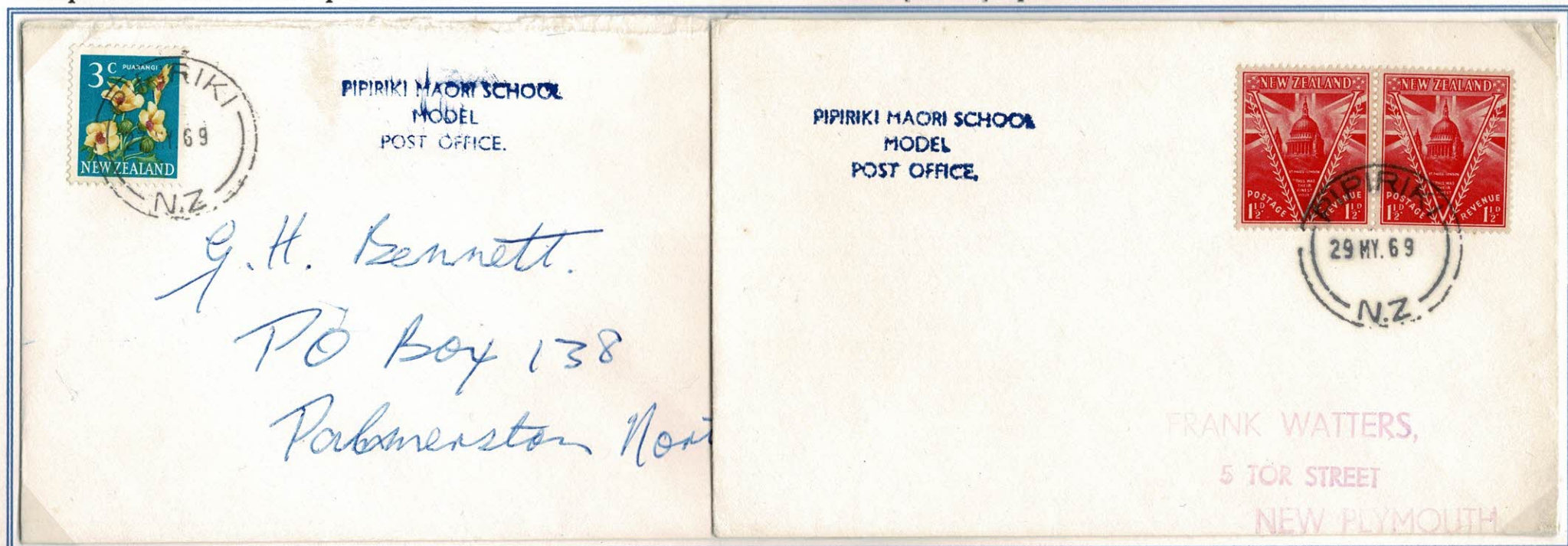
**Non-philatelic letter** [probably taken to school by Shirley's child] after parents were informed by school newsletter of the establishment on the Model School Post Office. **Pipiriki 8 MY 69 - earliest known.**

Enclosed letter includes:

*"This post office is a combined school and post office run by school children so they can get experience with money. The Post-master is also the school teacher. There are 22 children at this school."*

**Non-philatelic commercial Pipiriki 27 MY 69**

**Philatelic [Watters] Pipiriki 29 MY 69**



**PIPIRIKI MAORI SCHOOL MODEL POST OFFICE**

The word "MAORI" was excised from the cachet - known September 22, 1971 to October 13, 1971 [Last day]



Pipiriki 22 SP 71 - on piece ex-Registered letter. Earliest example known with "MAORI" excised.

Philatelic card with Pipiriki 13 OC 71 [last day]



Pipiriki 13 OC 71 Registered No.11 to Robin Startup [Mr Postal History] in Masterton - Last day of use of "MAORI" excised cachet

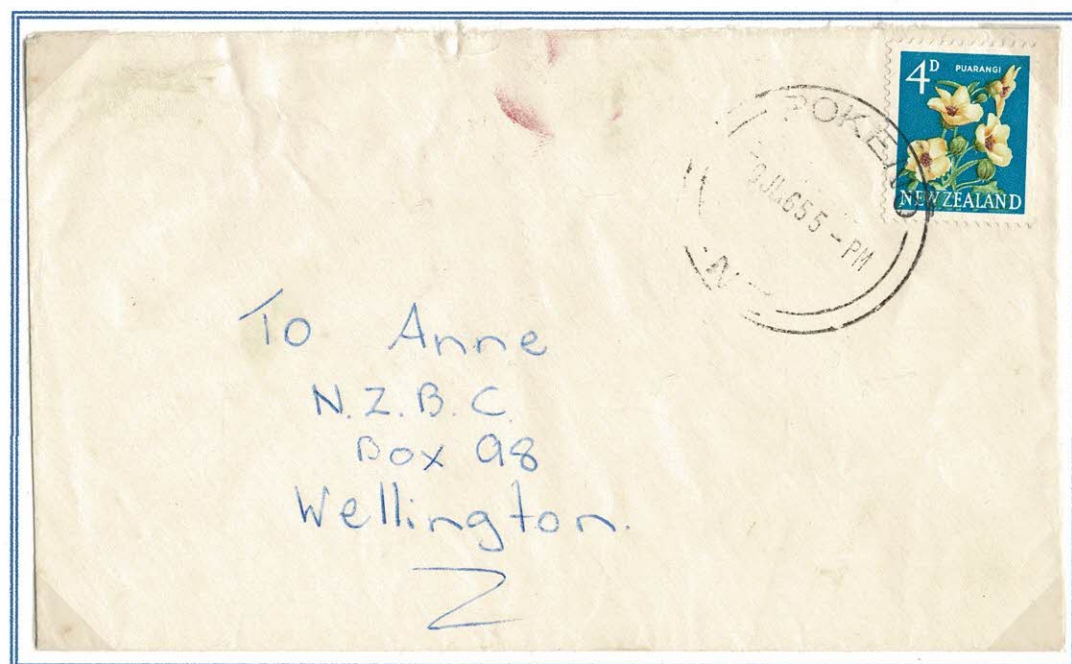
Pipiriki 13 OC 71 Registered No.12 to Vera Francis [one of the Postal History pioneers] in Dunedin - Last day of use of "MAORI" excised cachet





## POKENO SCHOOL MODEL POST OFFICE

Township 50km south Auckland. 31mm circular cachet. Only one example known 30 July 1965.



Pokeno School Model Post Office cachet correctly used on non-philatelic commercial mail with Pokeno "C" class 30 JL 65

Note that there is no philatelic collector mail known suggesting that it was short-lived and that there was no Post Office publicity

## SILVERDALE SCHOOL MODEL POST OFFICE

30km North from Auckland. Silverdale school model post office has been operated on three occasions each time with a different cachet.

Information from Startup Archive ex New Zealand Herald Newspaper

### Post office at school

Local philatelists sent covers to be stamped today by Auckland's newest post office—at Silverdale Primary school.

The model post office, equipped with practically everything to be found in a normal post office, was to be opened this afternoon by Auckland's chief postmaster Mr A. C. Jones.

The school was also allowed the special privilege of flying a blue post office flag for the day. This would not normally be permitted, because the flag indicates that members of the public may transact post office business there.

The school post office will be available only to pupils and their parents and staff.

### P.O. for school

The Silverdale Primary School next week will start a scheme not previously tried in Auckland schools — running practically a full-scale post office.

Equipped with parcel and letter scales, lists of postal rates and charges, mail sorting boxes and savings bank posters, the school's 120 pupils will run their own post office and savings bank, under the supervision of the headmaster, Mr G. Smith.

The post office will be open before school, and the children will be able to post letters and make savings deposits. It will be staffed by senior pupils.

Stamps on letters will have to be cancelled by the Silverdale Post Office, but the children will be able to stamp "Silverdale Model Post Office" on the envelopes.

The headmaster, Mr Smith, has tried this scheme

previously at a school in Hamilton.

"During the 2½ years I was there, the children posted 12,000 letters and parcels," he said.

#### Three aims

The model post office had three aims, he said.

"The children will be learning how to handle money, particularly decimal currency.

"It is also a form of community service and a convenience to the children's parents.

"And the savings bank encourages thrift."

He said the post office has gone to considerable trouble in supplying equipment for the children, who would have almost everything that was available in a real post office.

The chief postmaster for Auckland, Mr A. C. Jones, will open the model post office formally on Tuesday afternoon.

### Own Post Office For School

Twelve-year-old Judith Bird, of Silverdale, was just a little nervous yesterday.

After all, it is not every day that a girl takes charge of a post office, complete with stamps, scales, a counter and pigeon holes, let alone makes a public speech.

#### Stamp of Approval

But by early afternoon the new postmistress realised she had been worrying over nothing. The gleaming little post office at Silverdale School had received the stamp of approval from visitors, parents and children and the speeches had not been such an ordeal.

Within minutes after the Auckland chief postmaster, Mr A. C. Jones, opened the office, all 150 first-day covers had been sold and there was hardly a postage stamp left in the book.

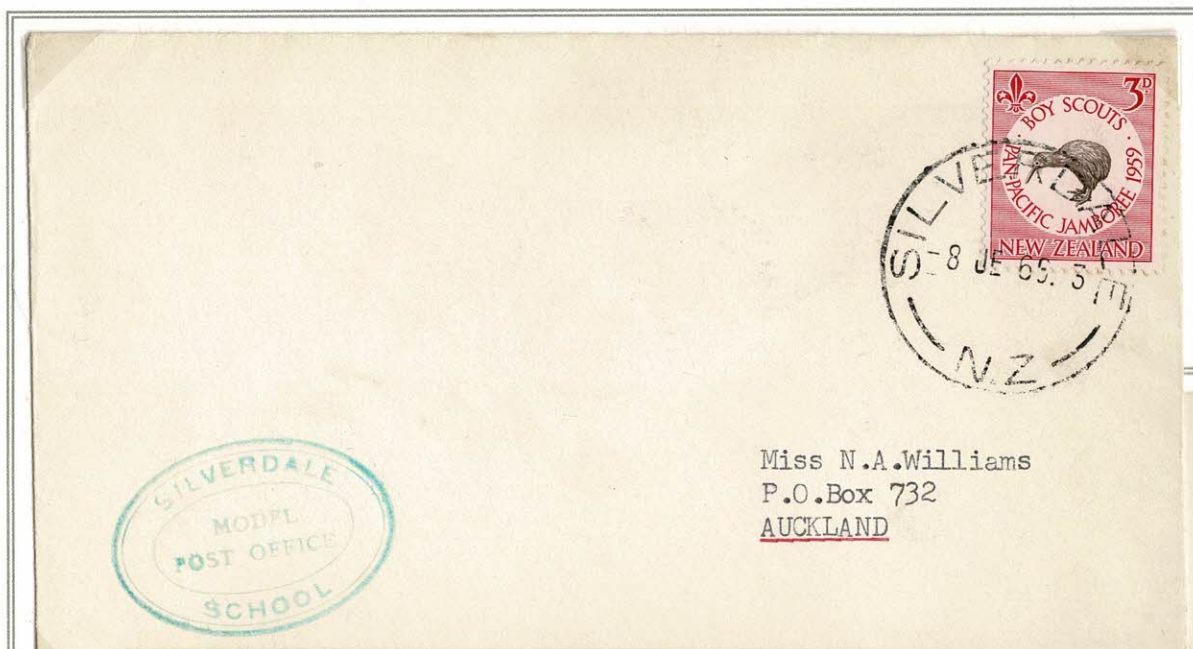
The red postbox near by was full of letters, each carrying the stamp "Silverdale School" and Judith's staff — Brian McCathie, assistant postmaster, Richard Lemme, mailman, Lynda Bird, mailsorter, and Christine Ring, postman—were already hard at work.

#### First In Auckland

The neat little post office, built inside the school and next to the room occupied by the headmaster, Mr G. Smith, is new to Auckland, but some have been set up in other parts of New Zealand.

Judith and her staff, who will be handling the postal needs of about 120 pupils at Silverdale, will be responsible for all the working of the office, even to the accounting.

SILVERDALE SCHOOL MODEL POST OFFICE



38mm x 25mm oval cachet in green  
Known 8 June 1966 to 12 December 1966



Mr. Frank Watters  
5 Tor St.,  
New Plymouth

First cachet 8 JE 66 - First day - with Silverdale "J" Class datestamp. Philatelic covers [Williams, Godfrey, Watters]. Cachet correctly on reverse in two examples, on front on third.



Second cachet - 34mm double circle, known in purple and green. Recorded October 14, 1969 to December 8, 1983.

Commercial use - Mobil Oil card for warrant of fitness with 2nd cachet - latest date Silverdale "C" Class 8 DE 83, redirected 9 DE 83



R. M. STARTUP,  
P.O. BOX 275,  
MARTON,  
NEW ZEALAND. ID.

28 July 1974

Dear Mr Salmon,

Many thanks for your letter of last May kindly bringing to my notice the school model post office at Silverdale.

This was very much appreciated as I had forgotten about this one. I was also most interested to see that they were using a circular rubber stamp - the earlier one, I think, being the line type. Have managed to secure an example of this myself, and am returning your cover with many thanks for your kindness.

When such facilities first came into being the Post Office HQ used to keep a record of the schools they assisted but in later years dropped this, so collectors have had to find them by picking up covers in day to day mail. But even more unfortunately most of them seem to have had a short life - possibly through changes in teachers or lessening of local interest.

With all best wishes

Sincerely

SILVERDALE  
SCHOOL MODEL  
POST OFFICE

3 Strikes of cachet  
No.2 on reverse of  
OHMS envelope of  
correspondence school  
with meter cancelled  
Silverdale 6 MY 74  
addressed to Mr  
Salmon in Aria.

Robin Startup laments the paucity of information and the challenge of obtaining examples of Model School Post Offices.

*"When such facilities first came into being the Post Office HQ used to keep a record of the schools they assisted but in later years dropped this."*

SILVERDALE SCHOOL MODEL POST OFFICE

Two OHMS Correspondence envelopes to Mr Salmon in Aria with 2nd cachet cancelled Silverdale 17 SP 74

**O.H.M.S.**

CORRESPONDENCE SCHOOL  
PRIVATE BAG  
WELLINGTON  
NEW ZEALAND



*Mr H. Salmon,  
Aria*



**Third cachet - 30mm circle, known in red.**  
Recorded February 27, 1988 to March 15, 1990

**Commercial use** - to World Record Club, Lower Hutt, undated second class mail with third cachet correctly used on reverse

**SPRING CREEK SCHOOL MODEL POST OFFICE**

22km south Picton 6 km north from Blenheim. Present school opened in 1873 from amalgamation of two others.

2-line cachet 47mm x 7mm. Known 11 June 1965 to 18 August 1971 in light red only on front

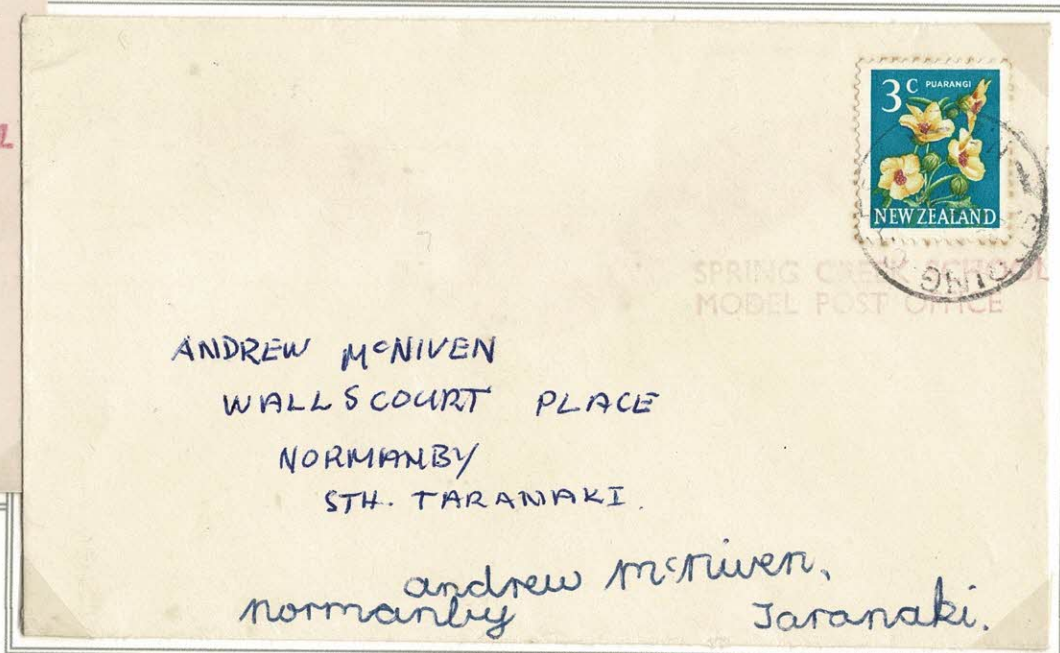


Cachet used to cancel stamp - unusual usage

Philatelic [Voyce] Spring Creek 7 AP 67



Philatelic [Postal History Society] Spring Creek 6 AP 67



Philatelic [McNiven] Spring Creek 15 MR 70

andrew mcNiven,  
Normanby Taranaki.

## TANGOIO SCHOOL MODEL POST OFFICE

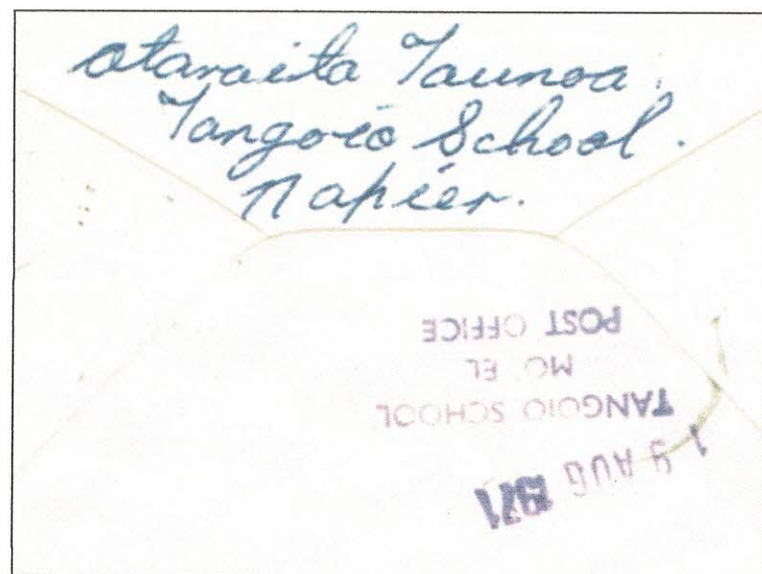
Tangoio Native School was open 1902-1974 - decile 1 two-classroom with just 22 pupils in 1971. The Post Office opened May 5, 1903 and closed September 18, 1973  
**3-line cachet 21mm x 12mm** - known 3 July 1971 to 29 September 1971.



Tangoio cachet with Tangoio "J"  
 Class 18 AU 71.



Reverse of envelope with postmistress "Ataraita Taunoa" Model School cachet and date 19 AUG 1971



A meticulously researched and detailed history by Harry Tawhai, of the **Tangoio Native School**, small country school north of Napier, Hawkes Bay, which was established in 1902 and closed in 1974. This book includes school records, correspondence, photographs, newspaper clippings, and recollections for past pupils and teachers. However this makes no mention of the Model School Post Office that was operation from mid-late 1971.

Official reports From the Education Department show the standard of education in native schools was "highly satisfactory"... "the schools, in the opinion of Inspector of Public Schools, being often superior to public schools of the same size."

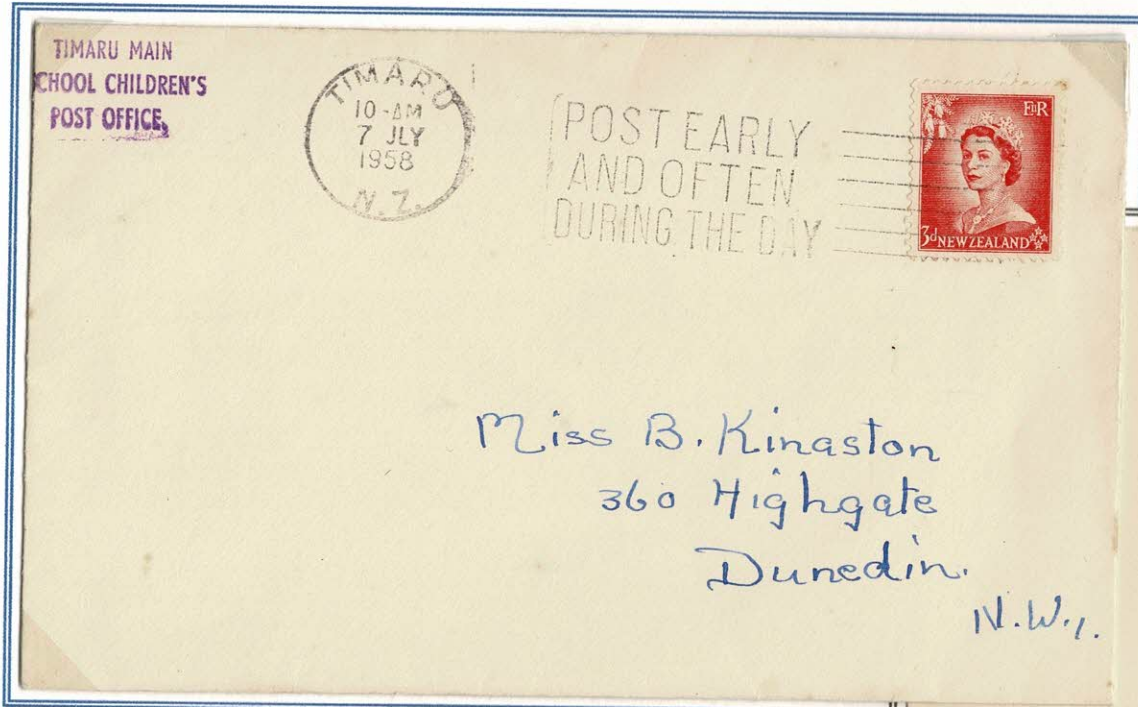
**TIMARU MAIN SCHOOL CHILDREN'S POST OFFICE**

Model Post Office is believed to have opened September 12, 1957. Used two very similar cachets.

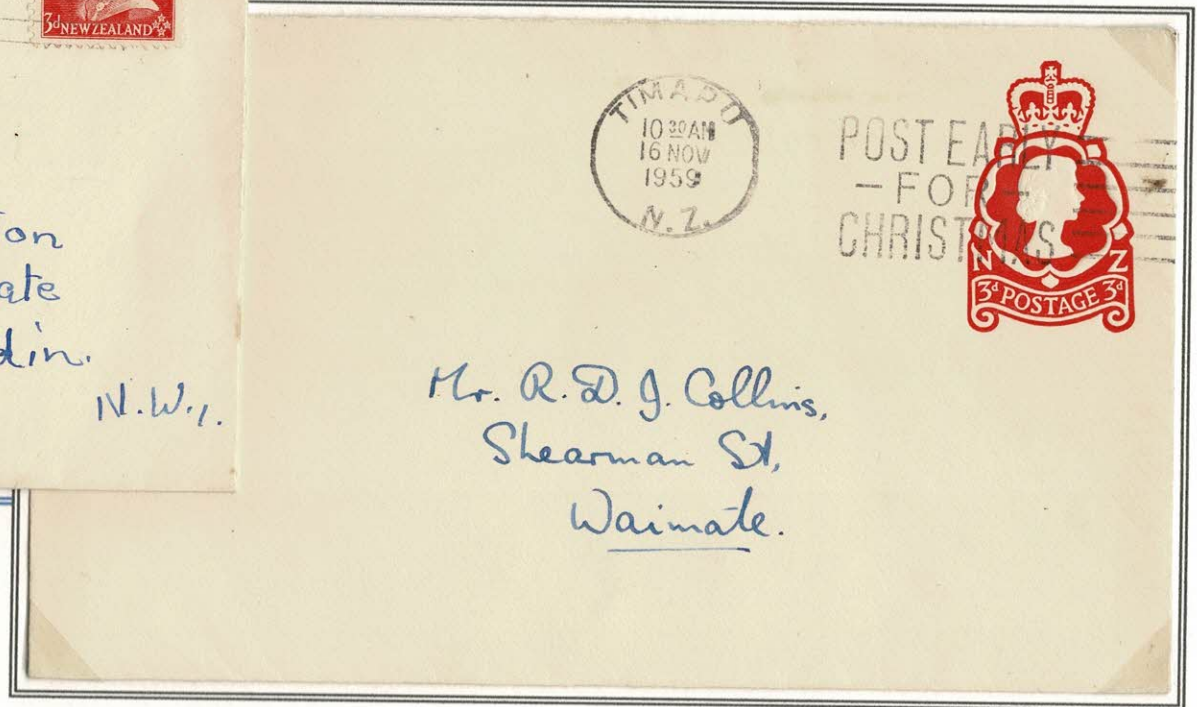
**3-line cachet 25mm x 12mm in purple known July 7, 1958 to October 16, 1961**

**3-line cachet 25mm x 10mm in red known March 19, 1965 to May 6, 1974**

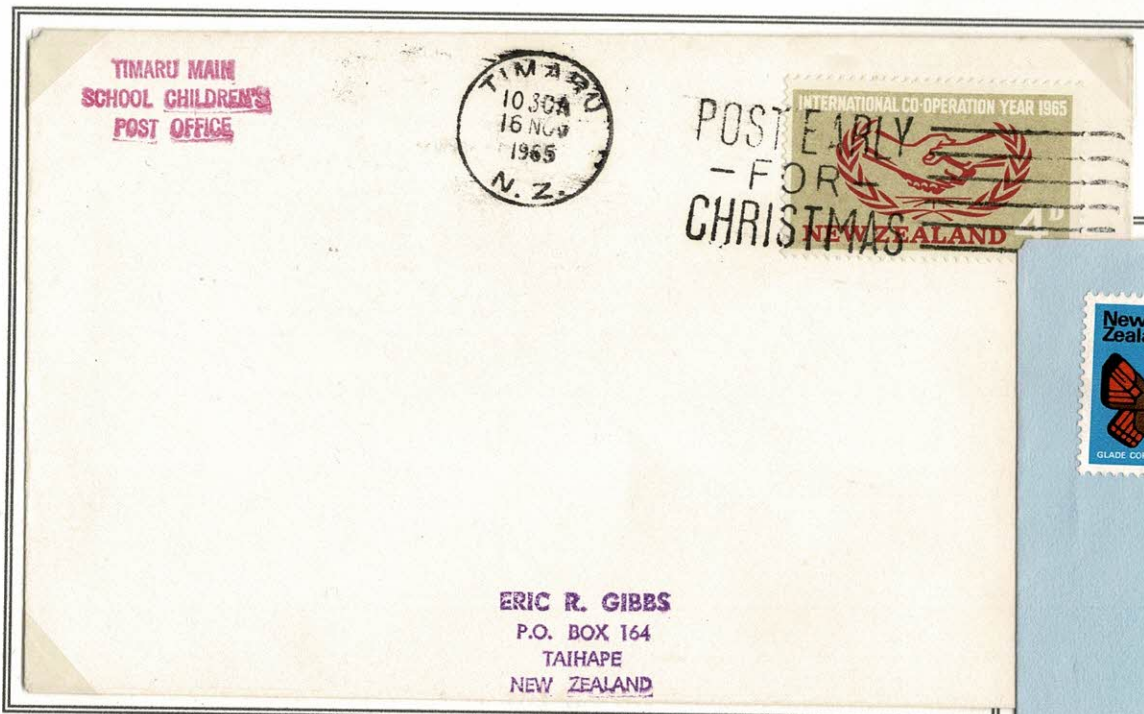
TIMARU MAIN  
SCHOOL CHILDREN'S  
POST OFFICE.



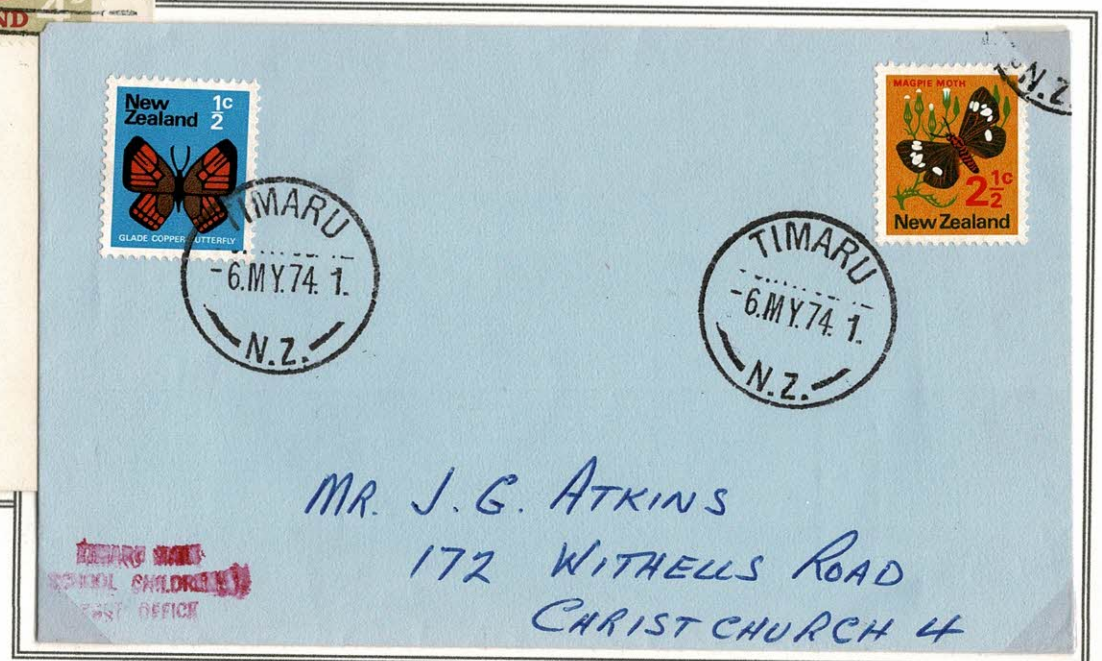
Cachet correctly on reverse with Timaru machine 16 NOV 1959.  
Philatelic R J G Collins.



Non-philatelic Cachet on front and reverse with Timaru  
machine 7 JLY 1958 - earliest recorded date



TIMARU MAIN  
SCHOOL CHILDREN'S  
POST OFFICE



2nd cachet in red with Timaru 16 NOV 1965 and 6 MY 74 [latest date]  
Philatelic covers

# TIMARU MAIN SCHOOL POST OFFICE

3-line boxed cachet 37mm x 18mm. Known 4 March 1986 to 12 March 1986



Cachet with Timaru "C" Class 4 MR 86 - earliest dates



## Timaru Main School

Grey Road,  
Timaru

Phone 47-759

20 Feb 1986

Dear Mrs Tapsan.

My apologies for the late return of your letters but as you will realise the school was closed for 7 weeks as from the day you posted them to us. I have just received them from our office lady and am pleased to inform you that our model P.O. is still operational, but is used somewhat infrequently.

I hope you find the impressions satisfactory and I return them, with best wishes for 1986

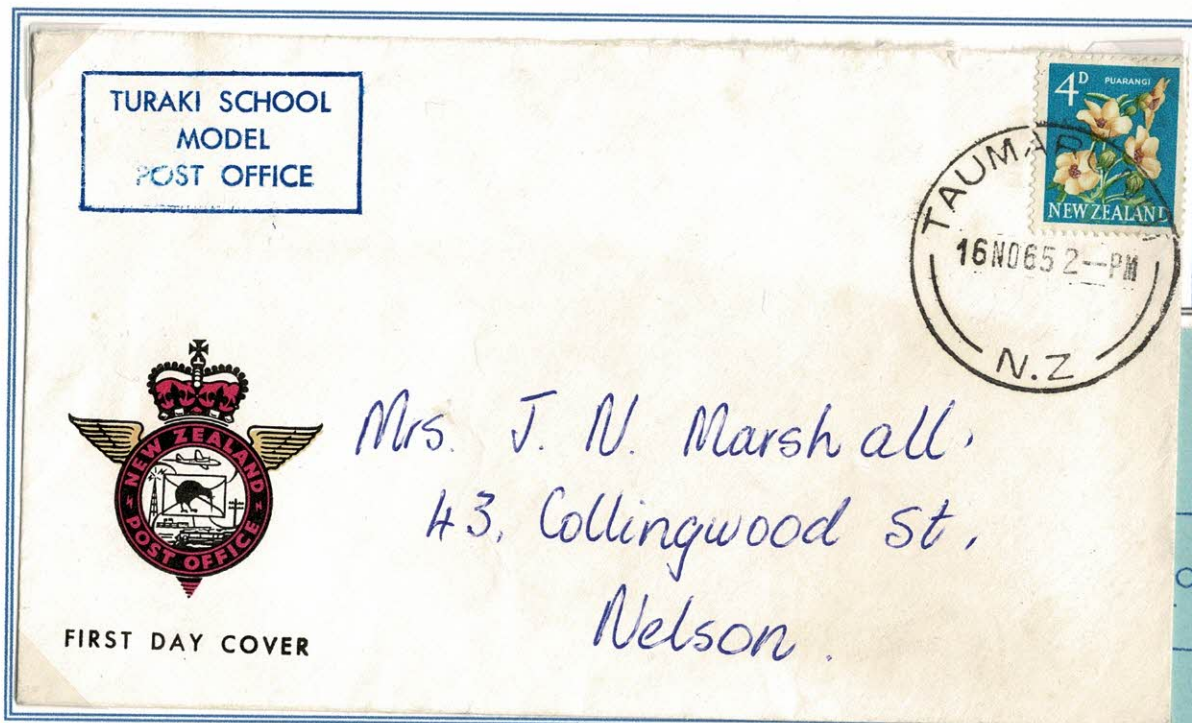
Yours sincerely,

F.C. Wilson (DEPUTY PRINCIPAL)



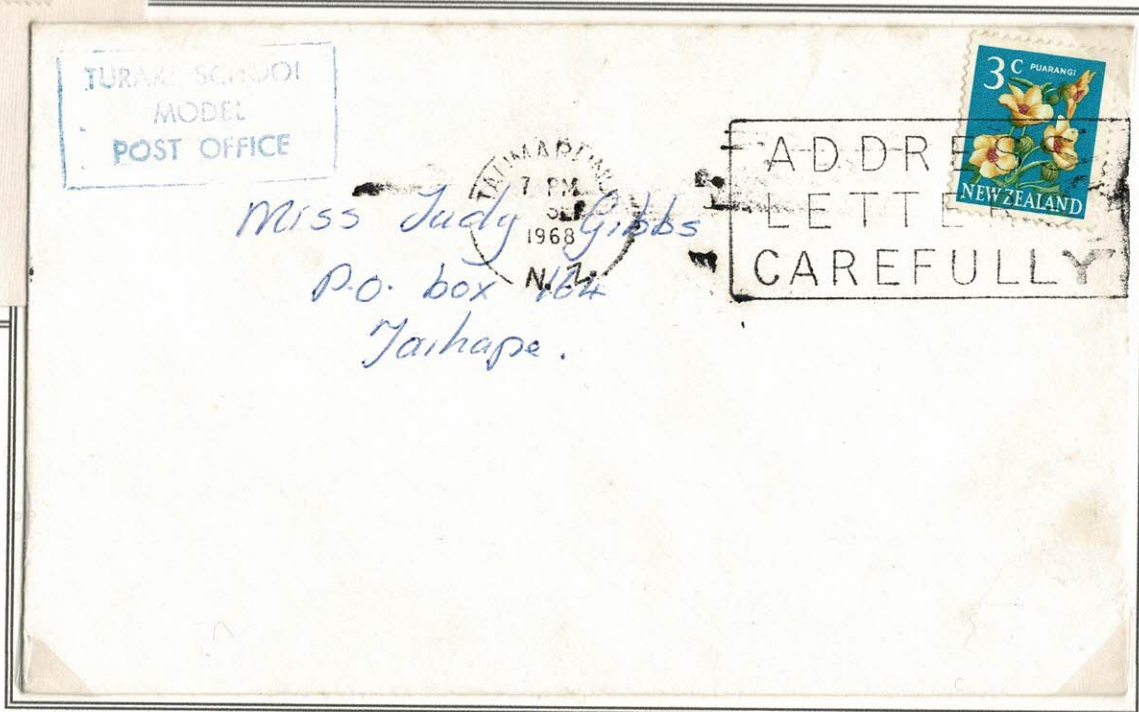
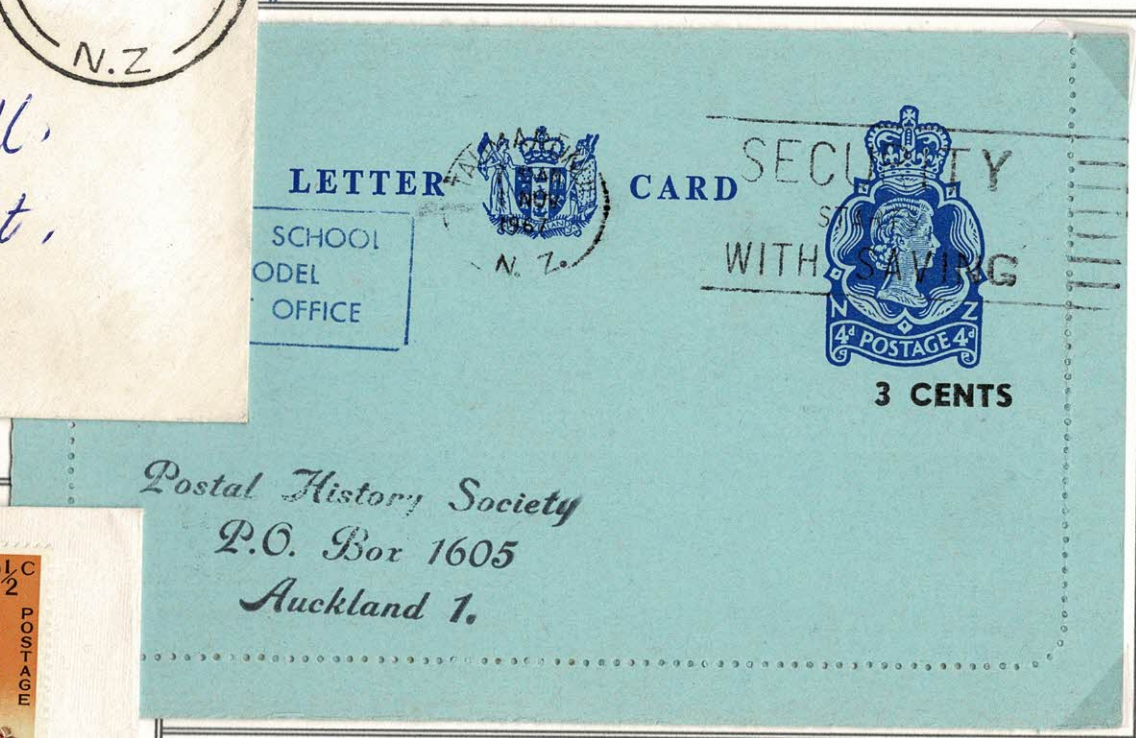
**TURAKI SCHOOL MODEL POST OFFICE**

Full primary school established 1956 in Taumarunui. 3-line boxed cachet 37mm x 18mm - known 16 November 1965 to 15 April 1970



Non-philatelic with Cachet with Taumarunui 16 NO 65  
early date

Taumarunui 1 AUG 1967 machine cancellation

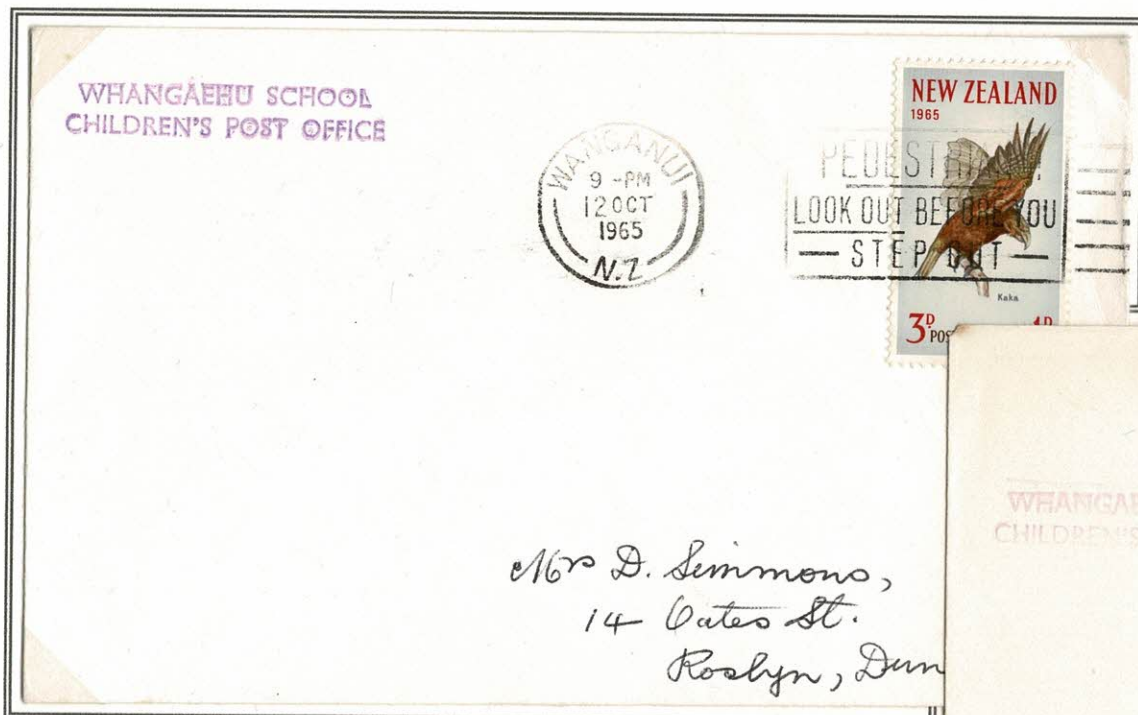


Cachet with Taumarunui 8 NO 67 - Philatelic from Doris  
Simmons to Vera Francis [pioneer collectors]

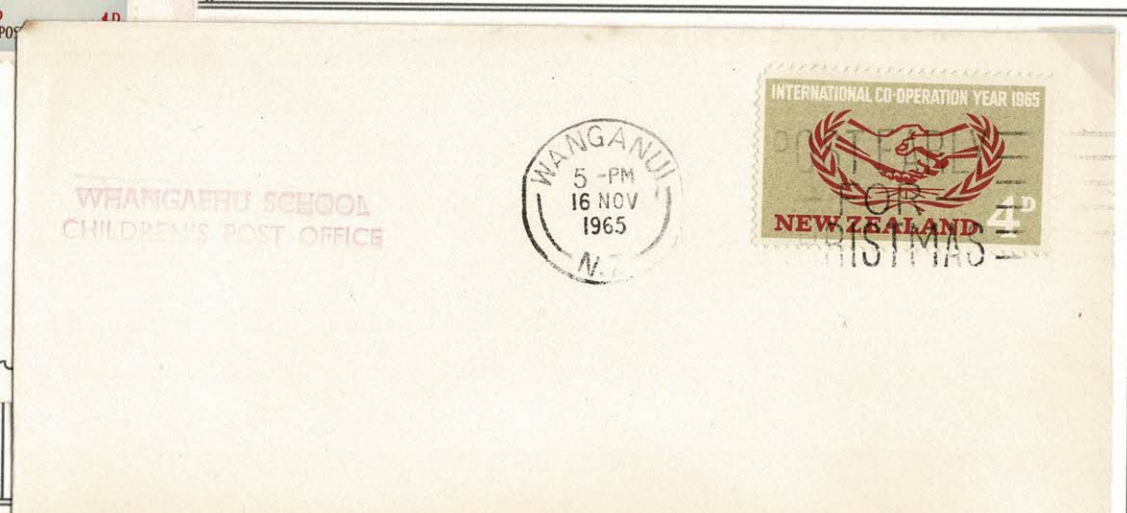
Taumarunui SEP 1968 machine cancellation  
Philatelic to daughter of Eric Gibbs

**WHANGAEHU SCHOOL CHILDREN'S POST OFFICE**

Small rural 28km south from Whanganui - sole charge school with 10 children. 2-line cachet 47mm x 7mm known 11 June 1965 to 31 March 1967.

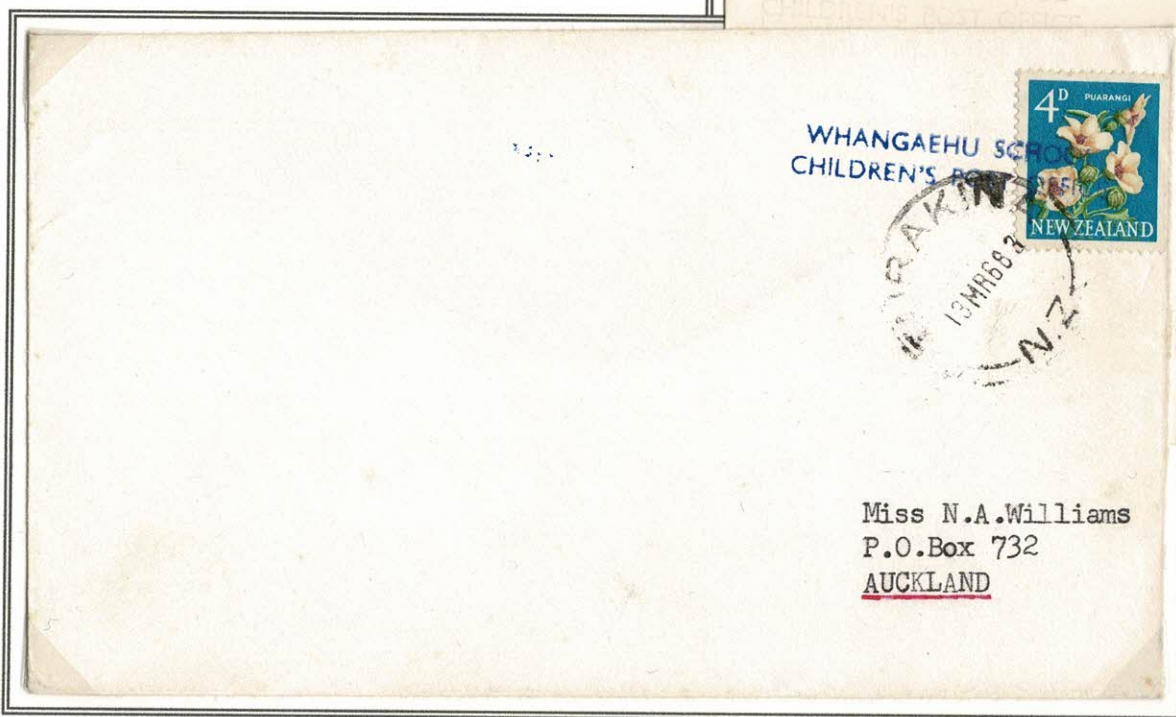


**Cachet with Wanganui 12 OCT 1965 machine cancellation with slogan "Pedestrians Look out before you step out"**  
Philatelic - Doris Simmons



*Mrs D. Simmons,  
14 Vates St.  
Roshyn, Dun*

**Cachet with Wanganui 16 NOV 1965 machine cancellation with slogan "Post early for Christmas"**  
Philatelic - Eric Gibbs



**ERIC R. GIBBS**  
P.O. BOX 164  
TAIHAPE  
NEW ZEALAND

Miss N.A. Williams  
P.O. Box 732  
AUCKLAND

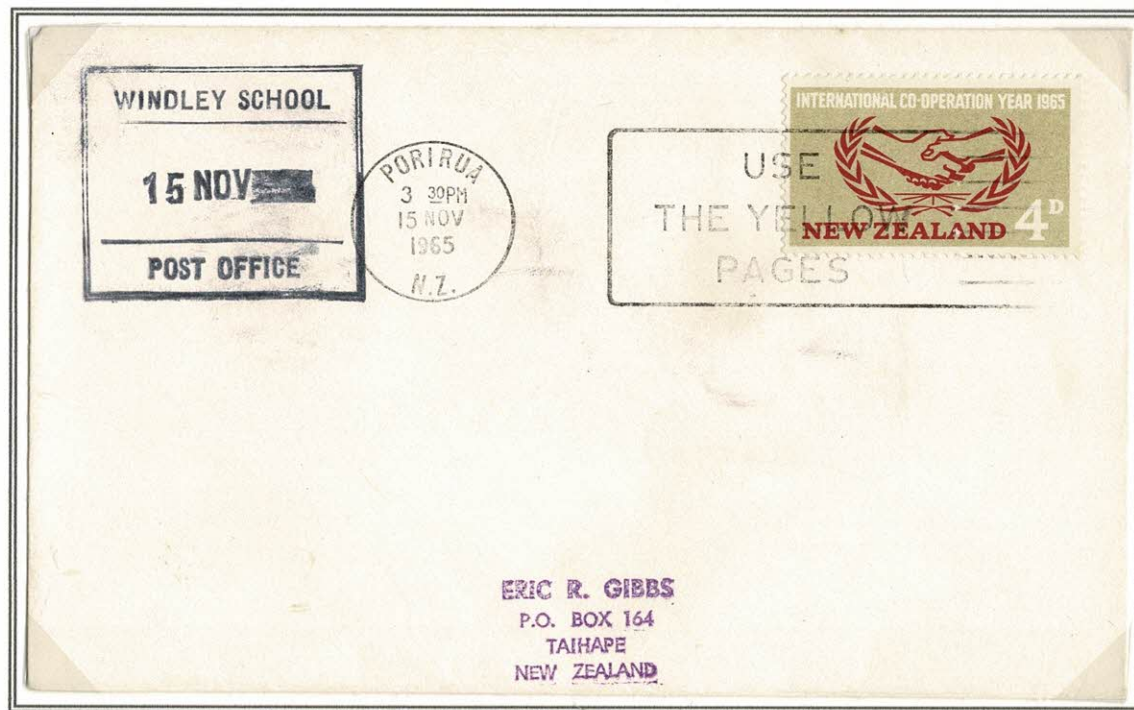
**Cachet in Blue onto stamp with Turakina 13 MR 66**  
Philatelic - Williams

## WINDLEY SCHOOL POST OFFICE

Decile 1 Suburban school in Porirua Wellington with large proportion of Maori or Pacific children. 37mm x 31mm boxed cachet with day and month  
Startup records that the Model Post Office opened during 1960. Cachet known 30 March 1961 to 11 March 1968

The cachet used at Windley School is unusual in that "Model" does not appear in the cachet. The cachet is also unusual in that it is boxed and includes a date although without the year included.

Windley School Post Office cachet with  
Porirua 15 NOV 1965 machine  
cancellation with "use the Yellow pages"  
slogan.  
Philatelic - Eric Gibbs



Windley School cachet with Cannons  
Creek "C" Class datestamp 24 JE 65 - a  
Post Office in Porirua City

## The Last Page

### The Post Office Report on Model School Post Offices [1970] is reproduced here:

School model post offices have become a popular innovation in recent years and the post office is always willing to co-operate with school teachers who would like to set one up. Local postmasters and school bank promotion officers are only too happy to give advice and guidance and provide information and materials, such as a rubber stamp bearing the school name, supplies of forms, leaflets, posters and any other equipment that might be available at the time.

The benefits to a child in a class project of this nature are many. By taking an active part in the general running of the model school post office, as "postmaster", "teller" or "mail carrier", he develops a sense of responsibility and an insight into community services. He learns to apply arithmetic lessons to every day living, develops an interest in letter writing, gains experience in oral and written expression, learns the uses of the various postage stamps, applies his lessons on weights and measures, gains experience in handling money and giving change as well as elementary accounting by producing a balance for cash and stamps.

The visual aids and "learning by doing" method of absorbing social studies has a lasting effect on a child's memory.

The duties of a model post office could include accepting the school banking - the "teller" would check the deposit slips, to see that the account number is entered, and the amount of the deposit is shown the same in words and figures, add the slips and count the cash.

Mail duties could include advising politely on the correct method of addressing mail, delivering incoming mail to the various classrooms, and collecting posted mail and taking them to the nearest Post Office for postmarking before delivery by the "Postman" back to the classrooms.

On request, the Public Relations Division, Post Office Headquarters, will supply a rubbers tamp, reading "Blank St Model School Post Office" for placing on the backs of envelopes posted at the School Post Office.

Selling stamps to the "public" and advising on the correct postage for airmail, surface mail etc., and advising on filling in various forms, which the Post Office is happy to supply. Rates and charges brochures are available on request.

It is most important that Post Office staff have a pleasant approach to people, and the staff of a model Post Office can be no exception. A cheery "Good Morning" or a polite acknowledgement of a customer's presence area as important as well balanced cash.

The advantages of these activities are obvious. By putting into effects the arithmetic oral and written expression in language and social studies, the model Post Office can be a most interesting supplement to formal education. In the schools where they have been established the children have been very enthusiastic in being both staff and customers and have shown a sustained interest in post Office activities.

As an extension to the setting up of a model school Post Office a visit to the local or district Post Office can usually be arranged for the class, by telephoning the postmaster concerned.

### Acknowledgments to Postal History Collectors:

This exhibit, and other similar exhibits of short-lived postal history interest [temporary Post Offices, special datestamps etc] would not be at all possible without the dedication of several generations of committed Postal History collectors - they all deserve recognition for their contribution to New Zealand Postal History.

Mrs Olwyn Gawler	Mrs Isobel M Hunt	Mrs L Walker
Mr Robin Startup	Mr Frank Watters	Rev A H Voyce
Mr Andrew McNiven	Mr R J G Collins	Mr Jack G Atkins
Mrs Vera Francis	Mrs Doris Simmons	Miss N A Williams
Mr Eric Gibbs	The Postal History Society of NZ	Mr Alan Jackson