

"Franconia Southern Hemisphere World Cruise"

January 9 - May 31, 1934

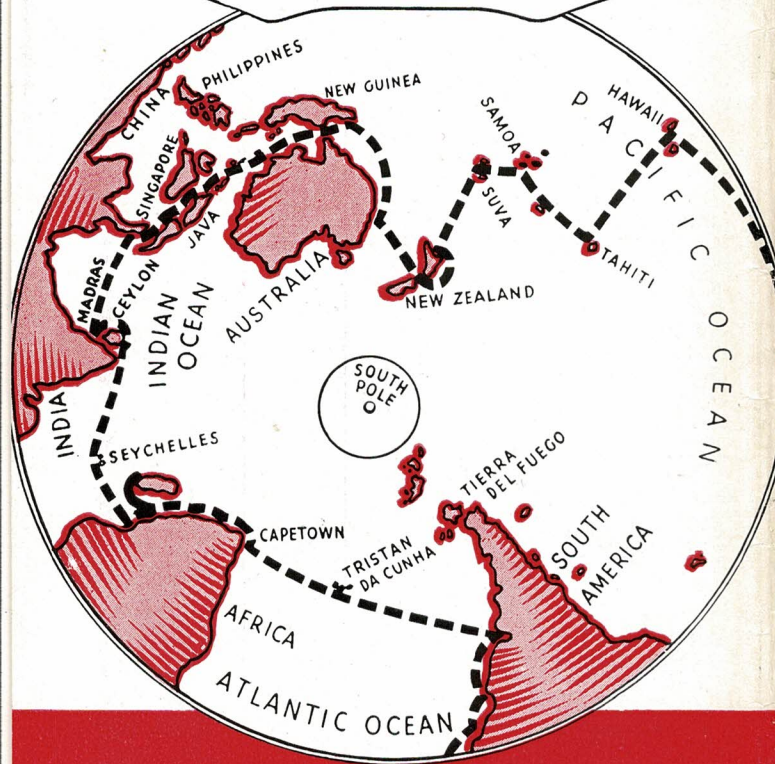
Sailing westwards from New York via Panama Canal calling at 37 ports, 141 days of cruising with 12 optional tours

FRANCONIA

Southern Hemisphere

WORLD CRUISE

*A voyage of
Rediscovery by
Hendrik W. van Loon*

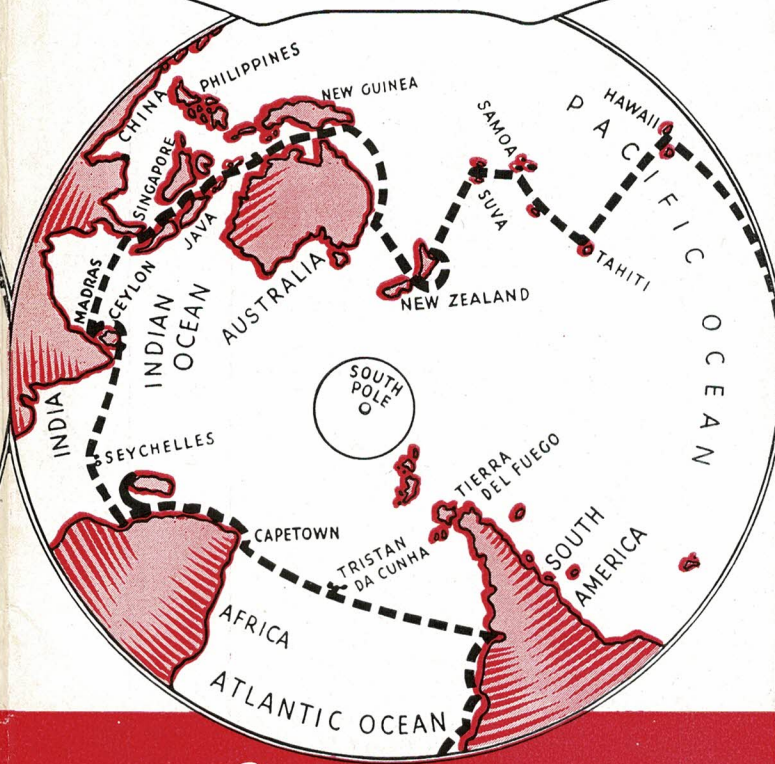


FRANCONIA

Southern Hemisphere

WORLD CRUISE

*A voyage of
Rediscovery by
Hendrik W. van Loon*



Sailing from

NEW YORK
JANUARY 9, 1934

LOS ANGELES
JANUARY 24, 1934

CUNARD LINE

IN COOPERATION WITH

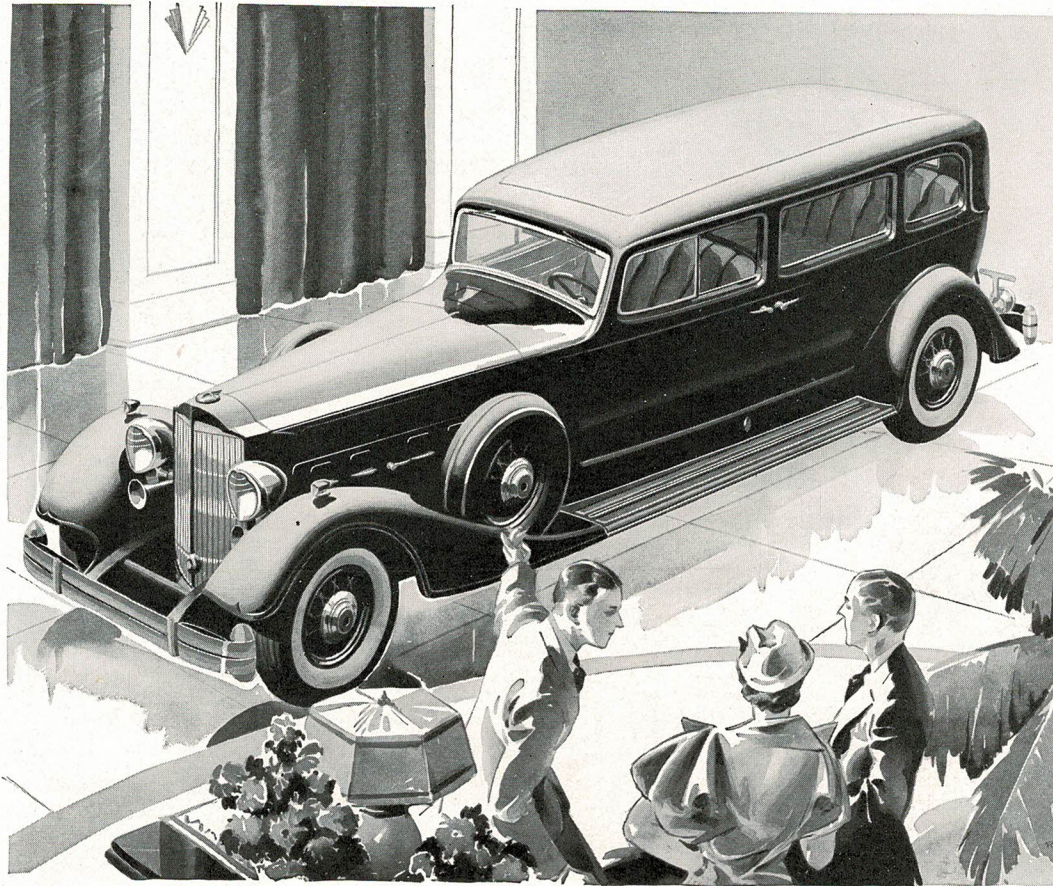
THOS. COOK & SON

1934 Franconia Southern Hemisphere World Cruise

Advertisement from National Geographic October 1933 for the 1934 World Cruise.

It notes that "The Franconia will be completely reconditioned..."

This refers to the 1933 refit with additional accommodation and repainted in "Cruising White"



Packard urges you to borrow this yardstick

IF YOU plan to buy a fine car this year, Packard has a yardstick it wants to lend you.

That yardstick is the new 1934 Packard—a car deliberately designed to be the standard of value with which to judge all fine cars, American or European.

And this year, more than ever, the fine-car buyer needs such a yardstick.

For, within the past three years, there has been a revolution in automotive values. Engineers, taking the depression as a challenge, have accomplished miracles of improvement. The progress of a decade has been compressed into three "hard times" years.

Old prejudices should no longer influence you in your choice of a fine car. Habit and hearsay are not safe guides, if you want to get

the most for your money. Packard believes that this year, of all years, you should *know!*

And the best way to know is to ride in every other fine car America can offer you. But ride in a Packard *first*.

Use the knowledge you get behind the wheel of a new 1934 Packard to judge every other fine car. Measure your dollars in terms of what Packard gives you for them. Then see if you can match Packard value in any other car—on either side of the Atlantic.

And while you marvel at the performance of this new Packard, remember this — if you buy a Packard, you can plan to keep it at least five years. Five years from now your 1934 Packard will still give you peak performance. And five years from now your Packard will still be smart —

for the lines of a Packard never wear out.

Why not telephone your Packard dealer today and ask him to bring a new Packard to your home? Take your choice of the new Eight, the new Super-Eight, or the new Twelve.

Drive it. Dare other fine cars to match it. Do this, and we'll leave it to you which car you'll want to own. We believe it will be a Packard.

PACKARD 1934

THE YARDSTICK WITH WHICH TO MEASURE ALL FINE CAR VALUES

The Packard Eight • The Packard Super-Eight • The Packard Twelve

Oct 1933

10-33 NATIONAL GEOGRAPHIC

CUNARD

ANCHOR LINE

346 NORTH MICHIGAN AVENUE
CHICAGO

S.S. FRANCONIA SOUTHERN HEMISPHERE CRUISE 1934.

	<u>One Person</u>	<u>Each of 2 Persons</u>
<u>PROMENADE DECK</u>		
<u>Outside rooms</u>		
G, K	\$3450	\$2800
F, L	3250	2600
A, S, C, P	2850	2000
B, R, D, M	2750	
<u>Inside Rooms</u>		
E, O, J	1500	
H	1450	
<u>A DECK</u>		
<u>Outside Rooms</u>		
A-22 A-24) Parlor Suites with Bedroom		
A-23 A-25) Sitting Room, Bath & Toilet,	11550	7550
A-11, 12, 14, 15, 16, 17 with Private Bath and Toilet,	5050	4150
A-26, 27 with Private Bath & Toilet..	4850	3950
A-1, 2, 28, 29, 30, 31, 32, 33, 38, 40, 42, 43, 46, 47 with Private Bath and Toilet....	4450	3750
A-34/36, 35/37 En Suite with Private Bath and Toilet...	3150	each of four
A-39/41 En Suite with Private Bath and Toilet...	3385	each of three
A-44/45 En Suite with Private Bath and Toilet...	2750	each of four
	<u>One</u>	<u>Each of 2</u>
A-3, 4,	3400	2650
A-9, 10.	2850	2150
A-5, 6	2800	
<u>Inside Rooms</u>		
A-8 with Private Bath & Toilet . . .	3250	2550
A-7,	1900	1750
A-18, 19, 20, 21	2300	1900

3-page cabin prices for 1934
World Cruise from Cunard
Anchor Line Chicago.

This does not include the
additional "D" Deck
accommodation added in the
1933 refit

During the refit in 1933, additional accommodation was constructed on the forward "D" Deck

346 No. Michigan Ave. Chicago

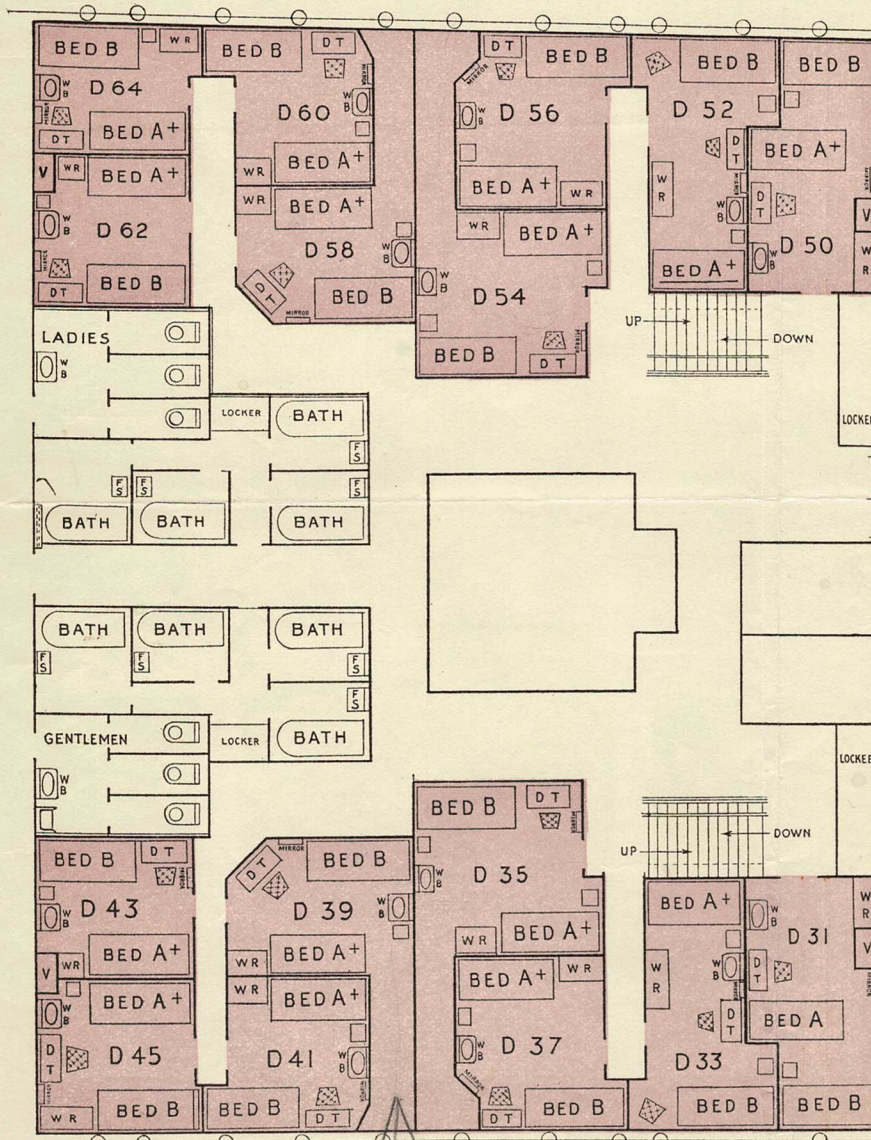
Supplementary PLAN of the
NEWLY CONSTRUCTED FORWARD D DECK ACCOMMODATION

S. S. FRANCONIA

Southern Hemisphere Around the World Cruise

FROM NEW YORK, JAN. 9, 1934

FROM LOS ANGELES, JAN. 24, 1934



Owing to demand for accommodation we have specially reconstructed part of the Franconia's forward D deck accommodations for world cruise passengers. This section is situated on Deck D just ahead of the forward dining saloon which adjoins rooms D-84, 86, 88 and rooms D-61, 63, 65 on the present Franconia cruise plan. The new enlarged rooms are fitted with beds, hot and cold running water and are offered at the very attractive rates as below indicated—

RATES

	One Person	Each of Two Persons
Outside Rooms:		
D-31, 33, 35, 37, 39, 41, 45, 50, 52, 54, 56, 58, 60, 64	\$2000	\$1500
Inside Rooms		
D-43, 62	1500	1300

The above rates are for steamship passage only. Quotations for shore excursions will be given upon application in accordance with conditions indicated in the cruise book.

*1900 = on Los Angeles
500 shore excursions
2400*

Multi-fold Brochure for 1934 Cruise with Hendrik Willem van Loon. The Itinerary was changed between the publication of the Promotional Book. That had 31 Ports and arrival at New York May 26th. Brochure 'copyright 1933'

37,555 MILES •• AROUND THE UNDERSIDE OF THE GLOBE!

... FROM JANUARY 9 TO MAY 31, 1934

NEW YORK . . . Sailing from New York . . . Tuesday, January 9th, 1934 at midnight.

JAMAICA . . . Jan. 14th . . . Kingston; Auto drive to Spanish Town, Bog Walk, etc. Lunch at a hotel.

PANAMA CANAL ZONE . . . Jan. 16th . . . Cristobal; Daylight passage of Panama Canal. Auto drive around Balboa, Ancon, Panama City, Old Panama.

CALIFORNIA . . . Jan. 24th . . . San Pedro; Auto drive to Los Angeles and environs, visiting Beverley Hills, Hollywood, etc. Lunch at a hotel.

HAWAIIAN ISLANDS . . . Jan. 31st to Feb. 2nd; Auto drive from Hilo to Kilauea Volcano, visiting the Lava Tubes, the Fern Forest, etc. Lunch at Volcano House Hotel. Auto drive in and around Honolulu, visiting the Pali, Diamond Head and Waikiki Beach. Lunch at the new Royal Hawaiian Hotel. The steamer stays over night at Honolulu.

SOCIETY ISLANDS . . . Feb. 8th and Feb. 9th; An interesting visit will be made to Papeete (Tahiti) where the steamer stays over night, with entertainment and dancing by the natives.

COOK ISLANDS . . . Feb. 11th . . . Auto drive in the island of Rarotonga . . . native dancing and entertainment at Avarua.

SAMOAN ISLANDS . . . Feb. 14th . . . Apia; Auto drive into the interior including a visit to Vailima, the home of the late Robert Louis Stevenson. Performance of a "Siva" or native dance.

FIJI ISLANDS . . . Feb. 17th . . . Suva (Viti Levu); Auto drive into the interior. Lunch is provided on shore, and there will be "Meke" or tribal dances performed.

NEW ZEALAND . . . Feb. 21st to Feb. 26th . . . Auto drives in and around Auckland and to Titirangi. Two days inland tour to Rotorua and the famous Thermal district, visiting in Maori Villages. Auto drive in Wellington and environs. Optional tours to Waitomo Caves, Rotorua, Wairakei, Lake Taupo, Tongariro National Park and Wanganui River.

AUSTRALIA . . . Mar. 2nd to Mar. 4th . . . Auto drive in and around Sydney including the famous beaches, etc. Lunch at a Hotel. Auto drive to Sublime Point and Bulli Pass. Optional Tour: Two days' trip over the Blue Mountains to Mt. Victoria and Jenolan Caves.

NEW GUINEA . . . Mar. 9th . . . Port Moresby (Papua); An interesting visit to the Papuan village of Hanabanda.

LESSER SUNDA ISLANDS . . . Mar. 13th . . . Cruising through the picturesque Lesser Sunda Islands with a visit ashore at Kalabahi in the magnificent Kerbola Bay on Alor Island where tribal dances will be performed.

BALI ISLAND . . . Mar. 15th and Mar. 16th . . . Bulelong; Auto drive across this unique island visiting the principal points of scenic interest; temples, etc. A superb drive over the mountains. Lunch on shore and exhibition of native arts and crafts and Balinese dancing. Optional Tour giving a comprehensive view of the Island, spending the night ashore.

JAVA . . . Mar. 18th to Mar. 20th . . . Auto drive in and around Semarang. Auto drives to Batavia and environs; also to Buitenzorg visiting the famous Botanical Gardens. Lunches are provided at Batavia and Buitenzorg. Optional Tours to Borobudur, Djockjakarta, Bandoeng and Garoet.

STRAITS SETTLEMENTS AND MALAY . . . Mar. 22nd to Mar.

24th . . . Auto drive in and around Singapore and to Johore Bharu within the native Malay State of Johore. Lunch at Raffles Hotel. Auto drive in George Town (Penang) and around Prince of Wales Island, visiting the Snake Temple, the Botanical Gardens, etc.; also by mountain railway to Penang Hill, a wonderful scenic ride.

SOUTH INDIA . . . Mar. 28th . . . Auto drive in and around Madras, historic old city of Southern India. Optional Tour to Madura.

CEYLON . . . Mar. 30th and Mar. 31st . . . Auto drives in and around Colombo and to Mt. Lavinia; also to Kandy (the Temple of the Tooth), visiting Peradeniya (Botanical Gardens) and Katugastota. Lunches are provided in Colombo and Kandy. Optional Tour to Nuwara Eliya.

SEYCHELLE ISLANDS . . . Apr. 5th . . . Port Victoria; Auto drive in the Island of Mahé. Exhibition of native arts and crafts.

KENYA COLONY . . . Apr. 8th . . . Mombasa; Auto drive visiting the Old and New Towns, native quarters and other points of interest: a "ngoma" or series of tribal dances will be performed at Kilindini.

ZANZIBAR . . . Apr. 9th . . . An interesting day on shore visiting the markets, bazaars, etc.

MADAGASCAR . . . April 11th . . . Visiting Diego Suarez, the most interesting port of the largest French Possession in the Indian Ocean.

UNION OF SOUTH AFRICA . . . Apr. 16th to Apr. 19th . . . Auto drives in and around Durban including the Berea and the Valley of One Thousand Hills. Lunch is served at the principal hotels in Durban on one day. By special pullman bus from Durban to Pietermaritzburg with lunch provided. Optional Tours to Johannesburg, Pretoria, Victoria Falls, Bulawayo, Kimberley, Oudtshoorn, George and Knysna.

Apr. 21st . . . Auto drive to Port Elizabeth and vicinity with lunch provided on shore. Optional Tour through the "Garden Route" to Cape Town by auto visiting Knysna, George, Oudtshoorn, Cango Caves, etc.

April 23rd to Apr. 28th . . . Auto drives in and around Cape Town including Cape Point, Muizenberg, Paarl, Stellenbosch, Groot Schuur, Rhodes Memorial, etc.; also by cableway to the summit of Table Mountain. Lunch on shore on two days. Optional Tour of the Four Mountain Passes to Elgin, Worcester, Brede River, etc.

URUGUAY . . . May 8th to May 11th . . . Montevideo; Auto drive in and around the city.

ARGENTINE . . . By special steamer up the River Plate to Buenos Aires with accommodation and meals at the principal hotels. Auto drives in and around the city.

BRAZIL . . . May 14th to May 17th . . . Santos; By special train to Sao Paulo . . . automobile drive in and around the city including Butantan Snake Farm. Lunch is provided at the hotel. Rio de Janeiro; Auto drives in and around the city and to Tijuca. Excursions to the Summit of Sugar Loaf Mountain and to Mount Corcovada.

BARBADOS . . . May 26th . . . Auto drive across the island from Bridgetown to Crane Beach Hotel through sugar plantations, returning to the steamer or the Aquatic Club.

NEW YORK . . . Arrive Thursday, May 31st.

33 PORTS . . . 141 DAYS . . . 37,555 MILES . . . MINIMUM RATE \$1,200

The above-mentioned excursions are available at \$500 additional. Rates covering optional tours will be supplied upon application.

All fares for the cruise passage or shore excursions quoted are based on the value of the dollar on September 15, 1933, and are subject to increase in the event of decrease in the purchasing value of the dollar (caused by any action of the Government of the United States or otherwise). Bookings consummated by payment of 25% of the fares for the cruise and shore excursions selected will be protected at the rates in effect at the time such deposit is paid.



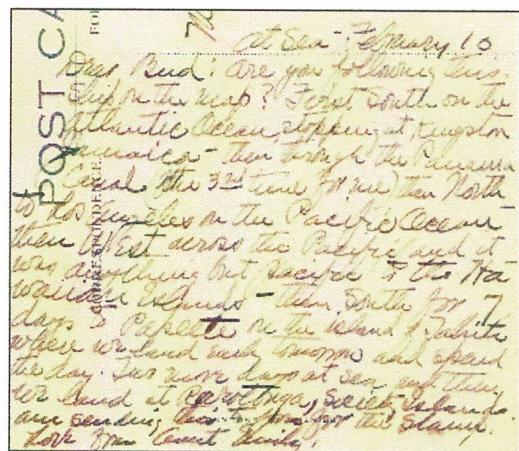
Honolulu FEB 2 1934

FRANCONIA - straight line marking

The Brochure for the visit to Hawaiian Islands has "Jan 31st to Feb 2nd, Auto drive from Hilo to Kalauea Volcano, visiting the Lava Tubes, the Fern Forest etc. Lunch at Volcano House Hotel. Auto drive in and around Honolulu, visiting the Pali, Diamond Head and Waikiki Beach. Lunch at the new Royal Hawaiian Hotel. The steamer stays over at Honolulu."

A series of "American Pacific series of covers" were arranged by a passenger, by Honolulu Stamp Club, all to the same address.

Cunard-White Star Line, Ltd., was a British shipping line which existed between 1934 and 1949. It was created as an operating company to control the joint shipping assets of the Cunard Line and the White Star Line after both companies experienced financial difficulties during the Great Depression. Cunard White Star controlled a total of twenty-five large ocean liners (with Cunard contributing fifteen ships and White Star ten). Both Cunard and White Star were in dire financial trouble. Cunard owned 62% of the new company, while White Star owned the remaining 38%.



Cancelled Papeete Tahiti

Franconia postcard with "Cunard Line" deleted and "Cunard White Star" added

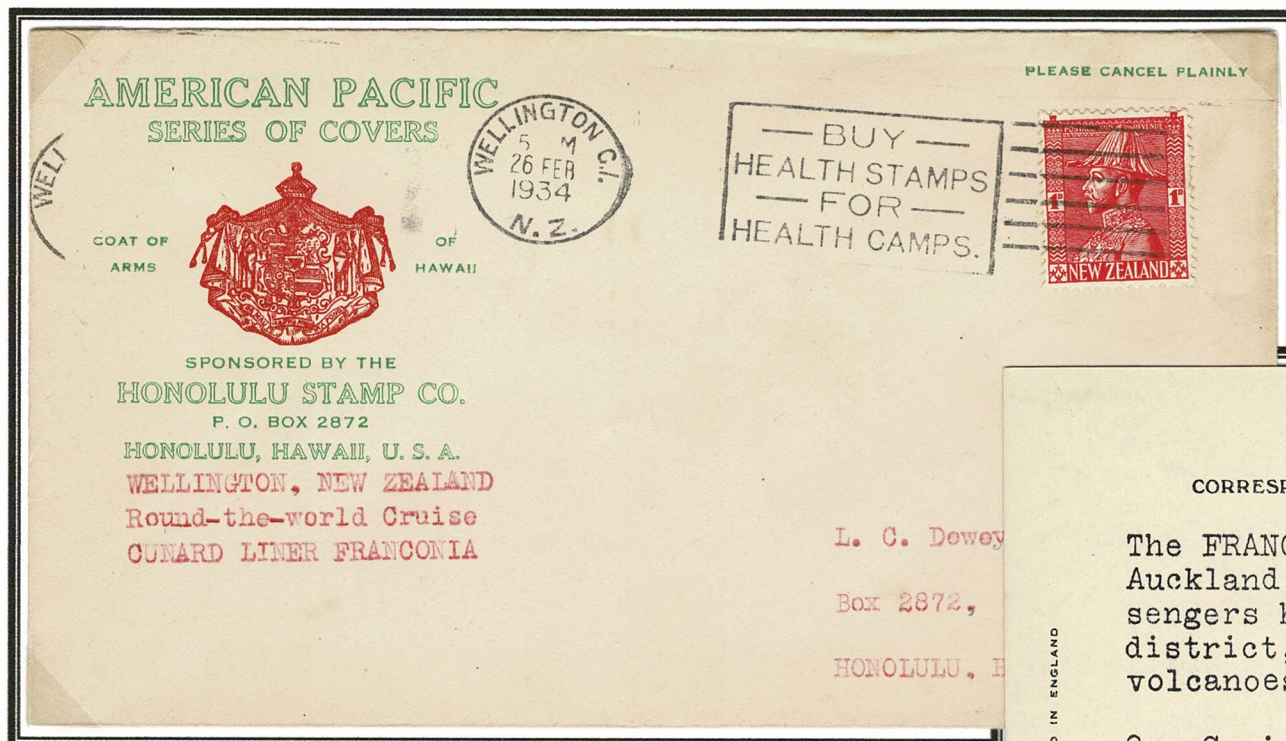
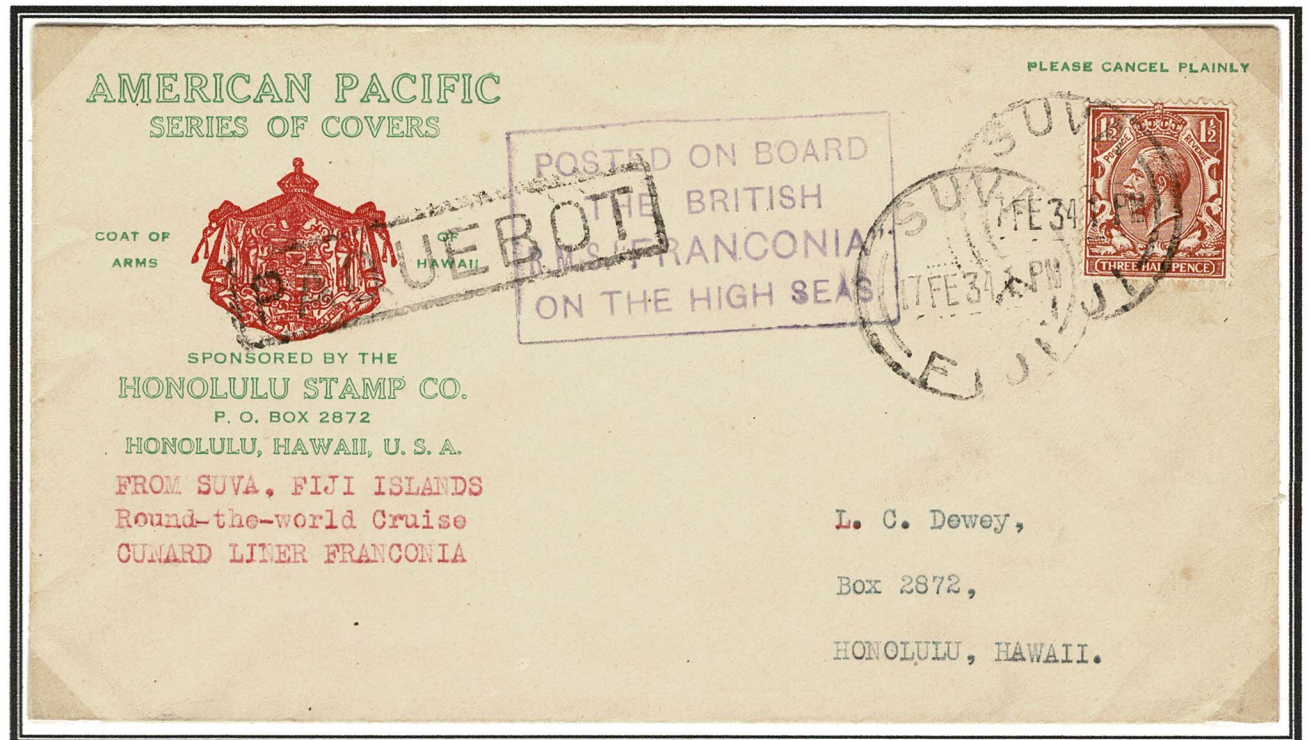


"At Sea February 10. Dear Bud"
 "Are you following the ship on the trip? First south on the Atlantic Ocean, stopped at Kingston Jamaica - then through the Panama canal [the 3rd time for me] then north to Los Angeles in the Pacific Ocean then west across the Pacific [and it was anything but pacific] to the Hawaiian Islands - then south for 7 days to Papeete on the Island of Tahiti where we land early tomorrow and spend the day. Two more days at sea and then we land at Rarotonga, Society Islands. Am sending this to you for the stamp."

"Posted on Board the British R.M.S.
"FRANCONIA" on the High Seas" cachet
- identical to that used on Franconia I [1911-17]

Boxed PAQUEBOT 52mm x 11mm of Suva
and stamp cancelled Suva Fiji 17 FE 34.

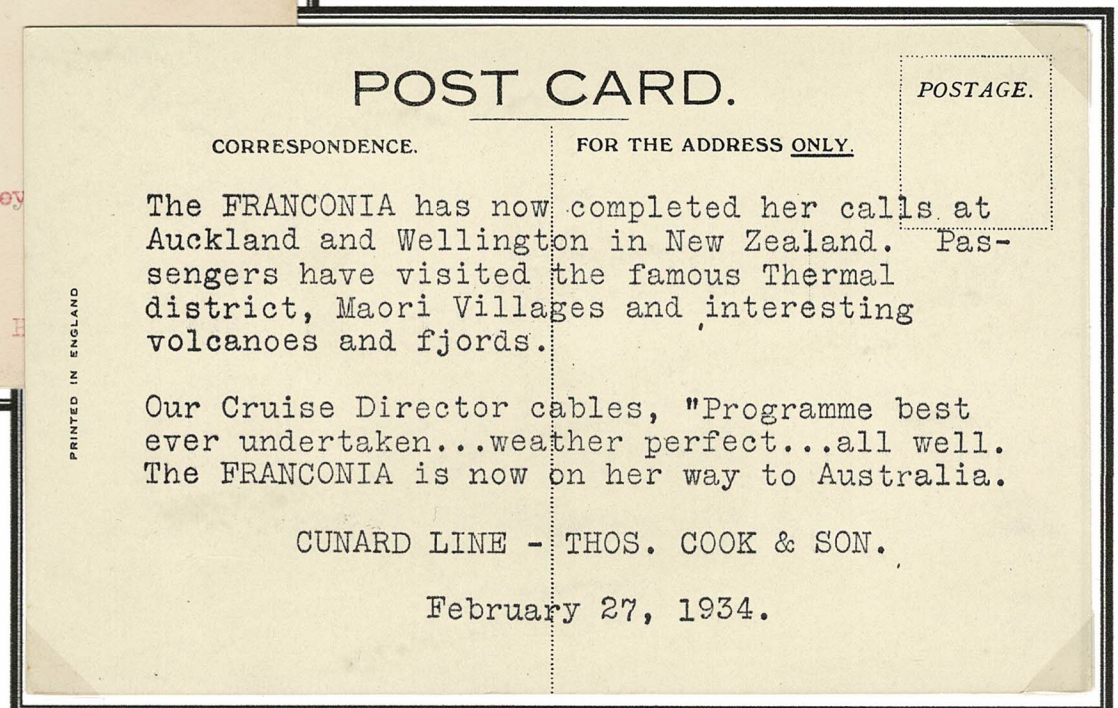
The Franconia was at Suva Fiji just for the day
on February 17th departing at midnight for
Auckland, New Zealand.



Wellington 26 FEB 1934

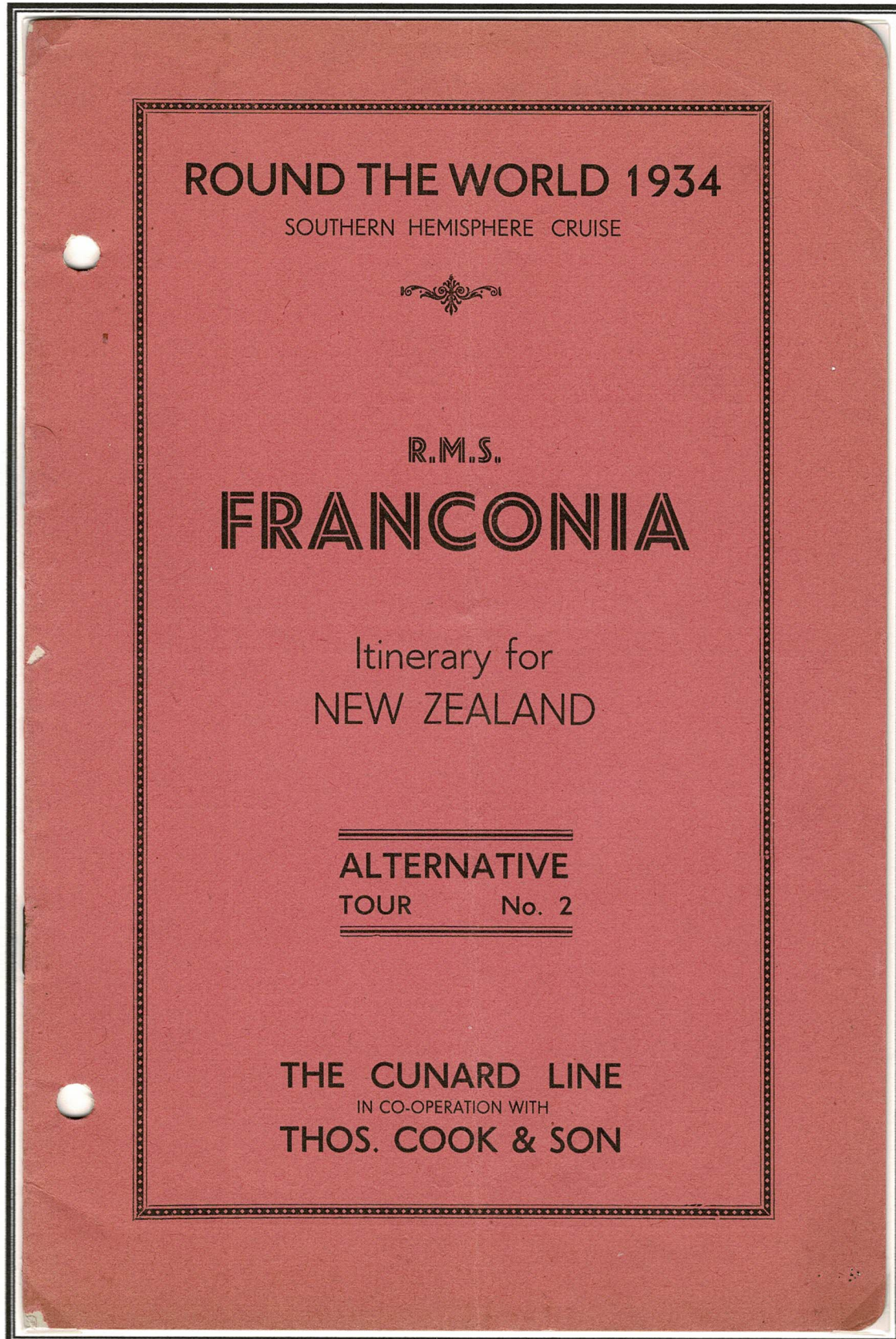
Advice "RMS Franconia Cunard Line" postcard from Cunard Line
- Thos Cook & Son [The Cunard Line was now **Cunard White Star**]

February 27, 1934.

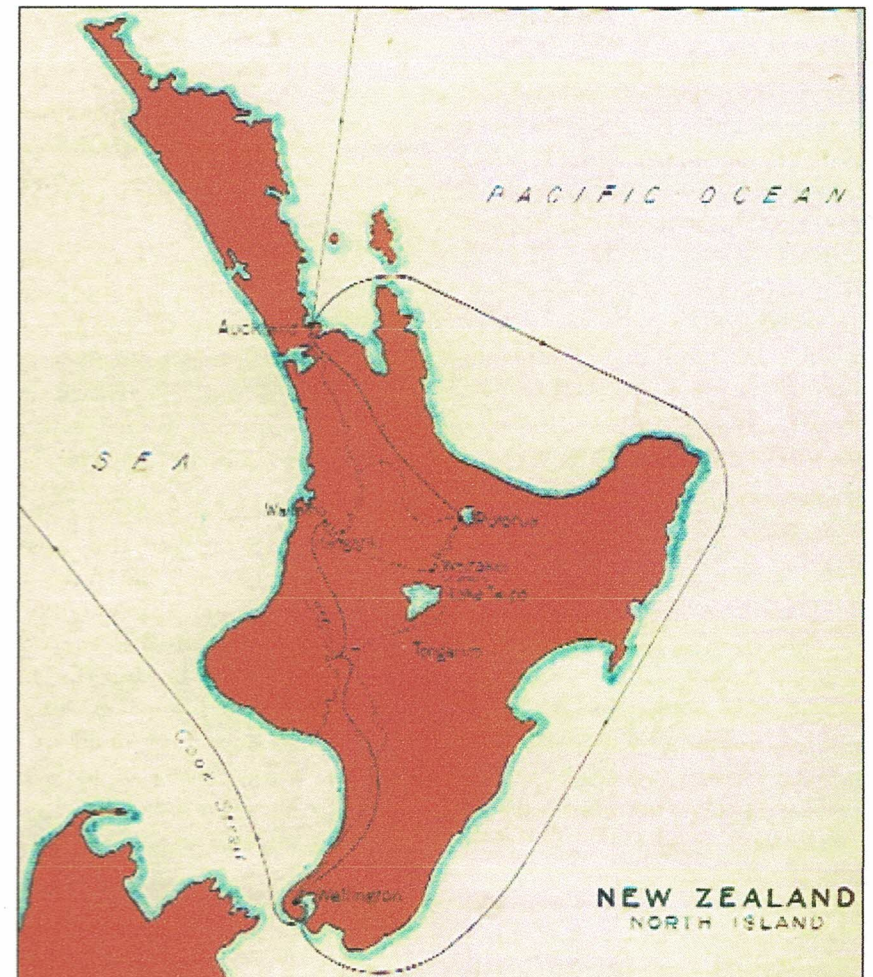


1934 Franconia Southern Hemisphere World Cruise

Itinerary for New Zealand, Alternative Tour No.2. Arrive at Auckland February 21st from Suva, Fiji. Train to Hangatiki then to Waitomo Caves, overnight at the Waitomo Caves Hotel. Train February 22nd to Rotorua; 23rd Automobile to Wairakei and Taupo then to overnight at Hotel Chateau Tongariro on 24th. Via Wanganui River, the "Rhine of New Zealand" by launch then train to Wellington on 25th. Depart Wellington on Franconia 6pm February 26th for Sydney, Australia.



Detailed booklet provided to cruise members as part of the Log Book



Alternate Tour No. 1 was virtually identical to Alternate Tour No. 2 but was by automobile throughout instead of a combination of special trains, automobiles and launch.

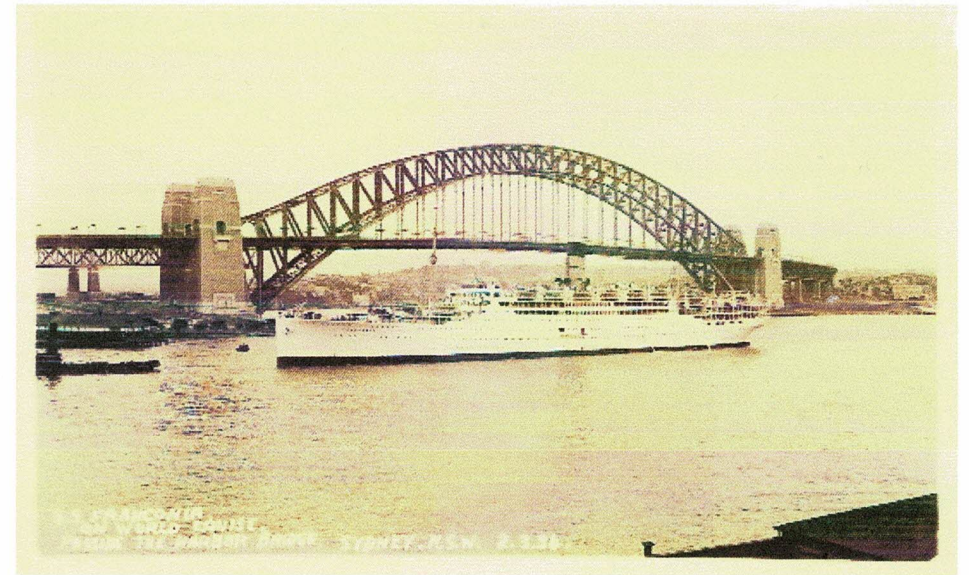
Alternate Tour No. 2 was only to be operated with a minimum of eighty passengers booking.

Illustration from the Cunard Line 72 page Cruise promotional publication.

1934 Franconia Southern Hemisphere World Cruise



Sydney 4-P 4 MR 34 to Providence Rhode Island USA. 2d foreign postcard rate.
 "We're getting on & leaving here @ 6-30PM. How do you like the look of the ship now? .. I'm going to try to walk over the bridge this afternoon & see the harbour though I was round it in a car yesterday."

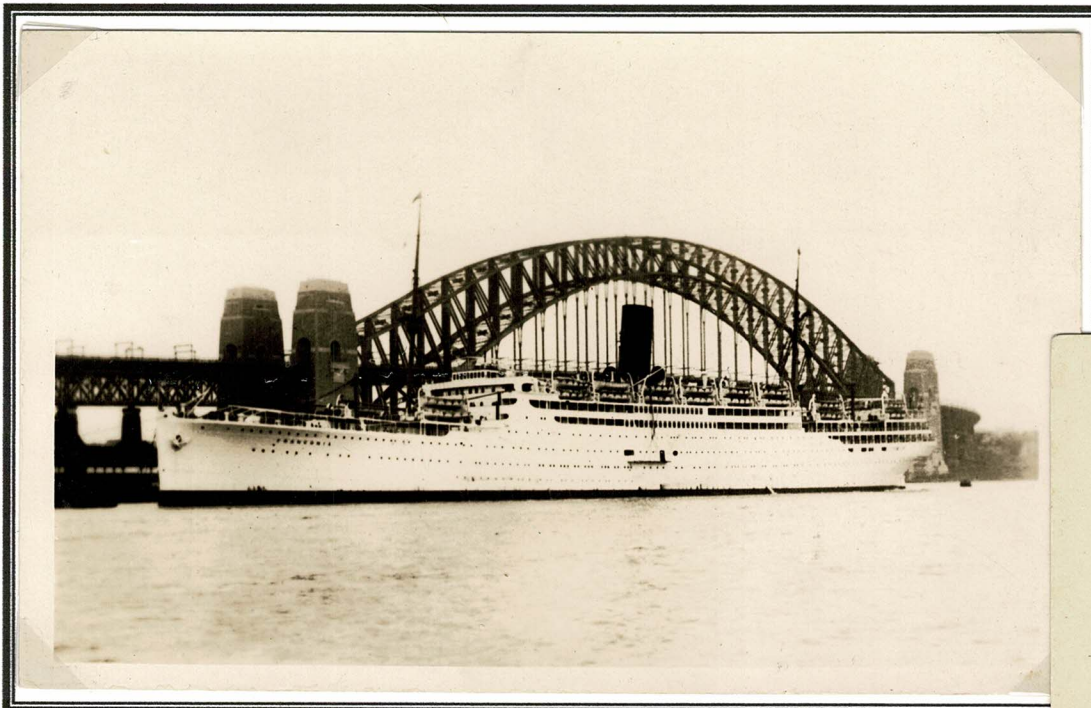


Inscription enlarged



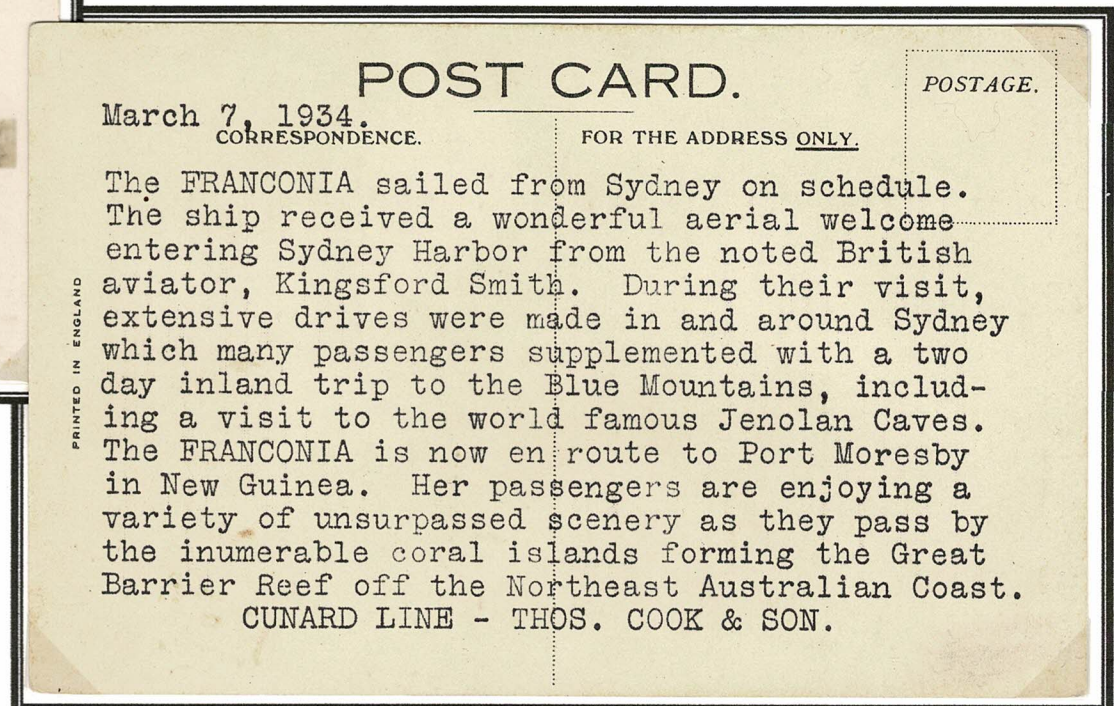
Postcard of Franconia and Sydney Harbour Bridge - real photograph by Kodak Australia.

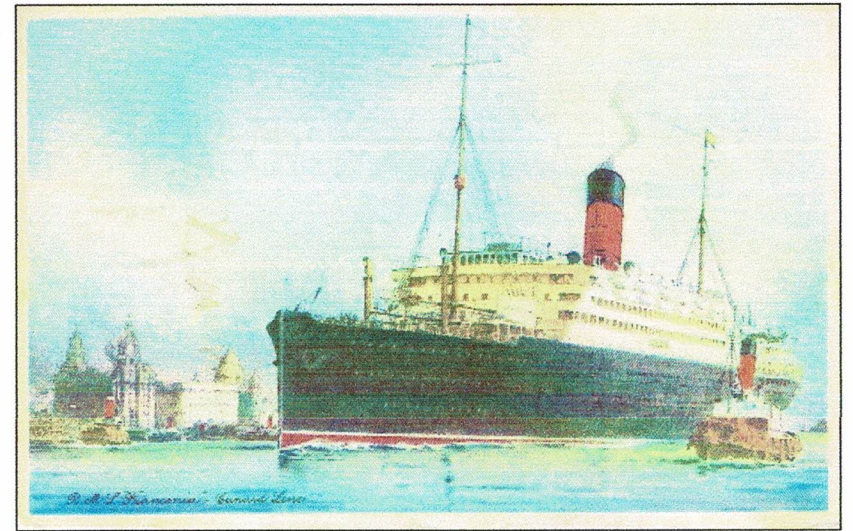
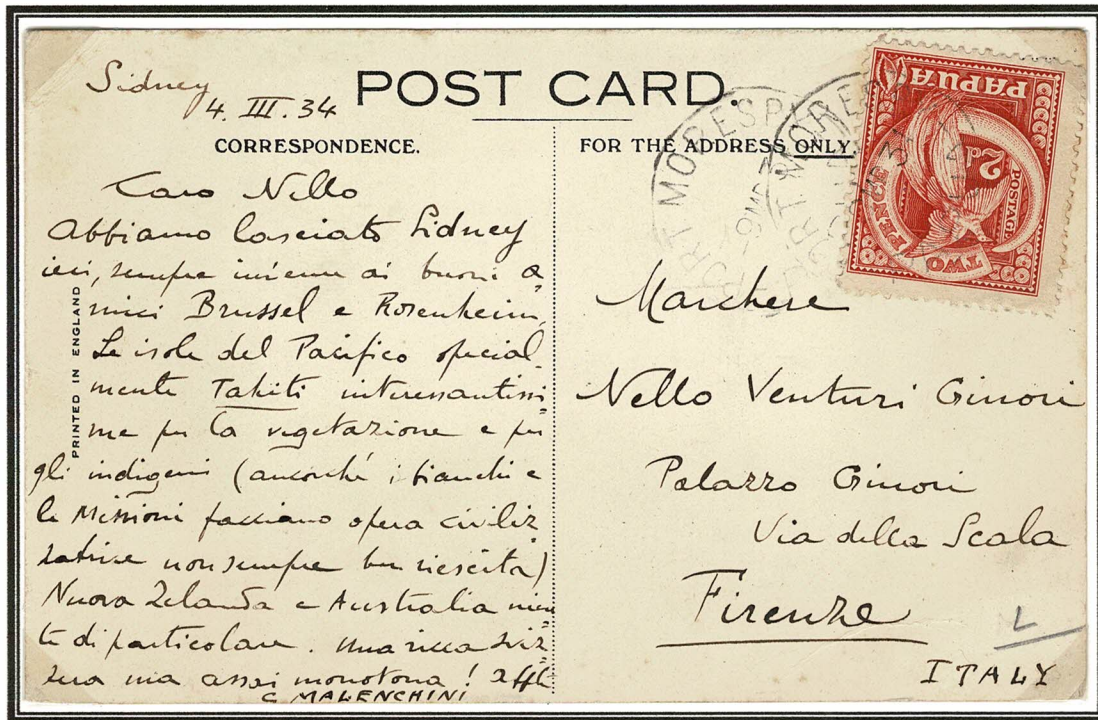
Annotated in French "2.3.34 The Franconia in the Port of Sydney"



Advice postcard "March 7, 1934"

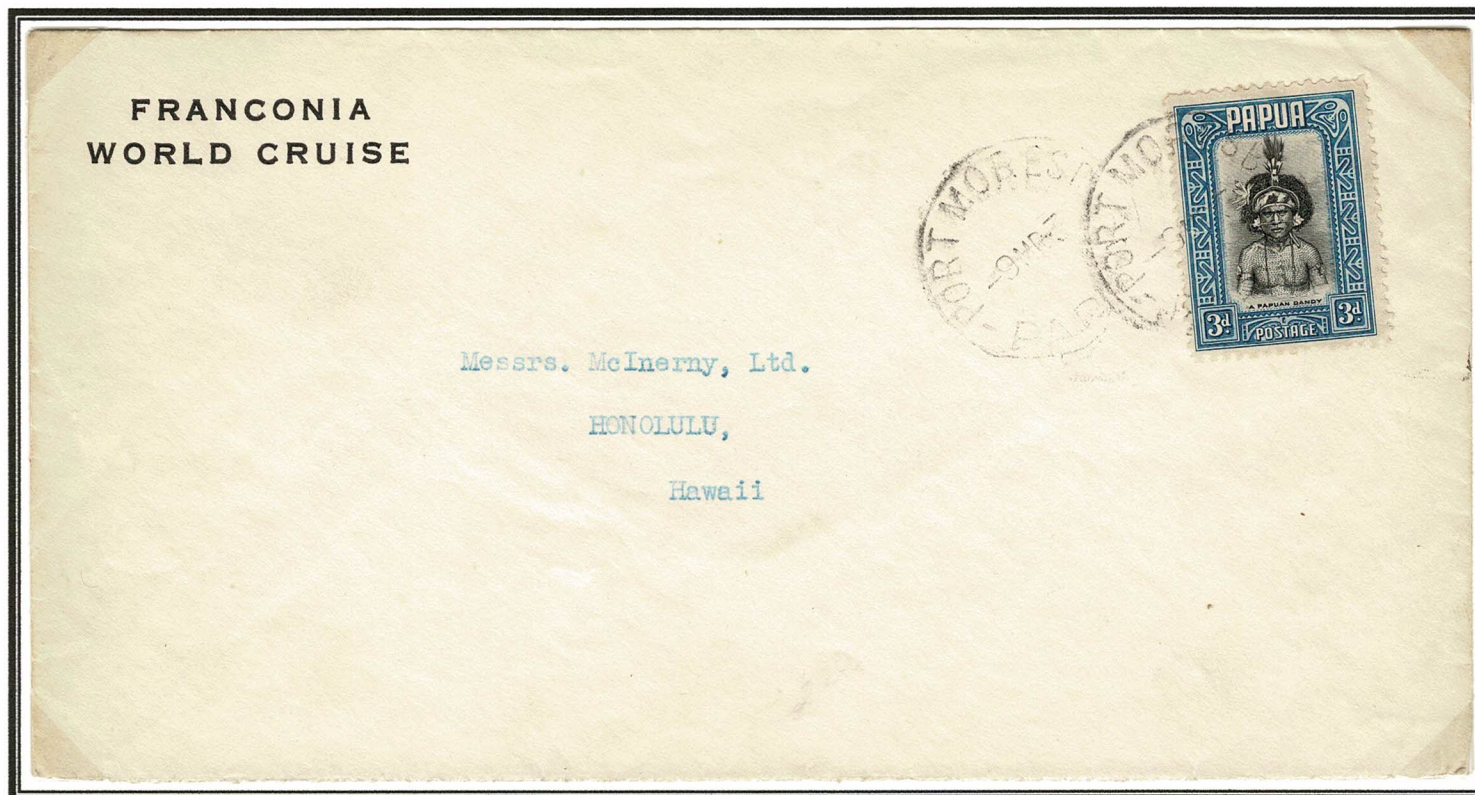
Note that the Franconia was welcomed into the Sydney harbour by the aviator **Kingsford Smith**





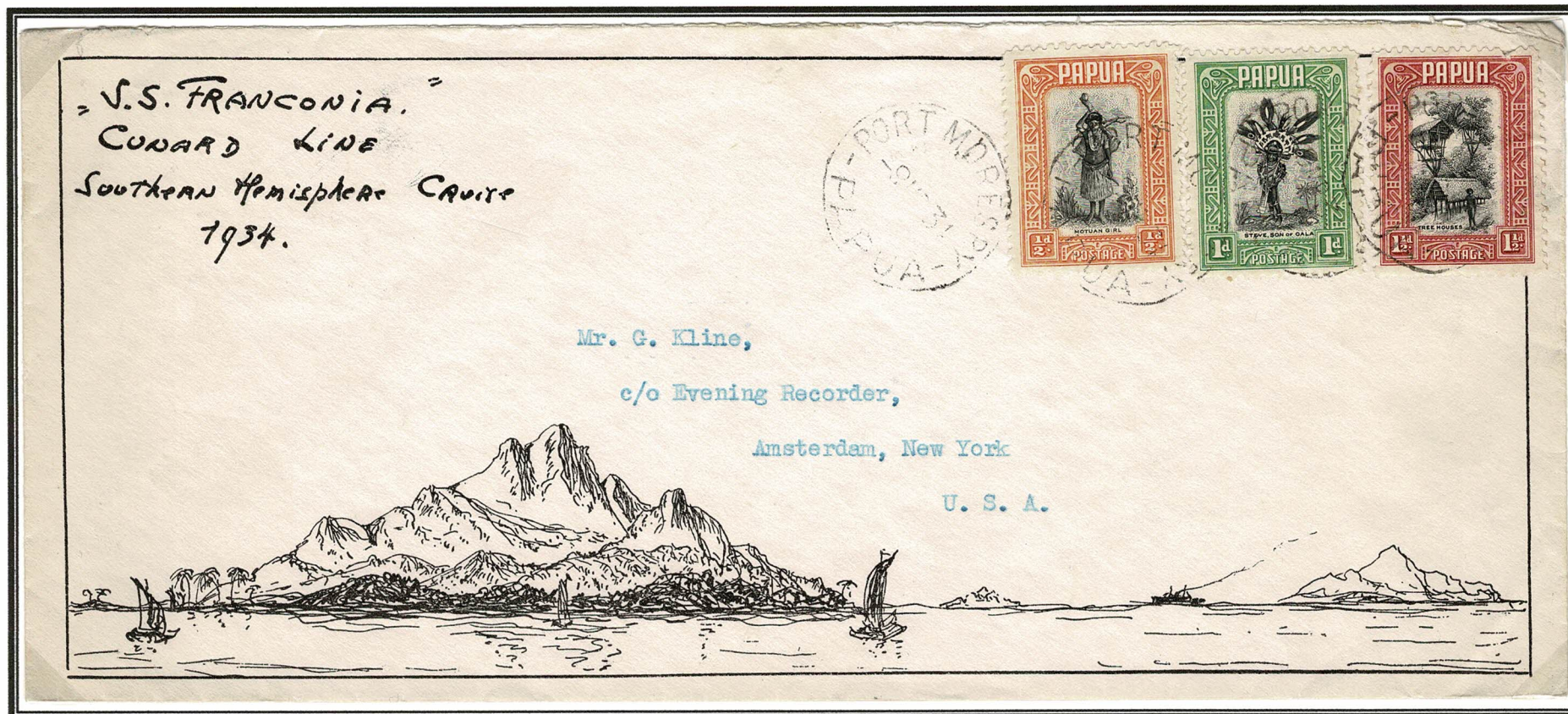
Port Moresby Papua 9 MR 34 postcard to Italy.

Written "*Sidney 4 III. 34*" in Italian the card mentions the Pacific, Tahiti, New Zealand and Australia.



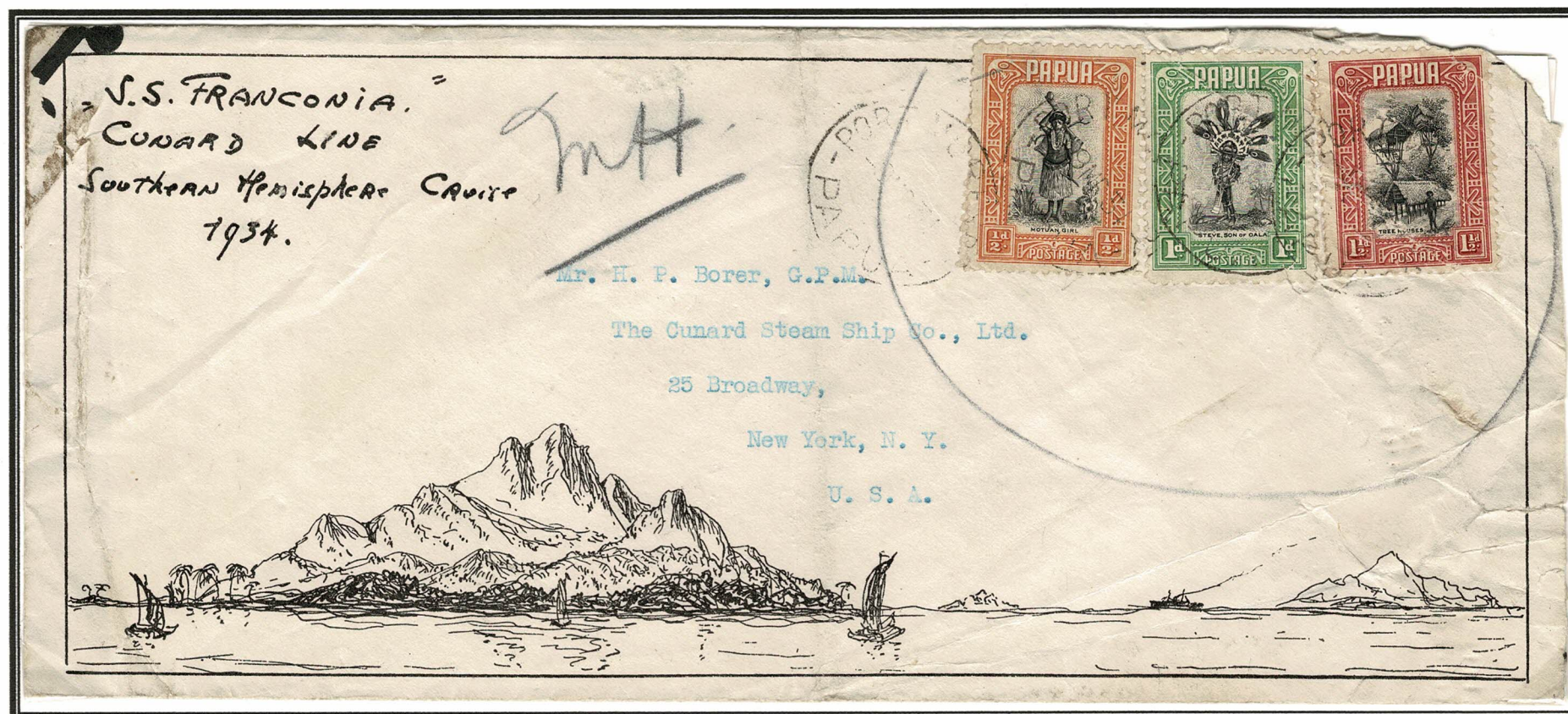
Franconia World Cruise envelope with 3rd stamp of Papua cancelled Port Moresby Papua 9 MR 34

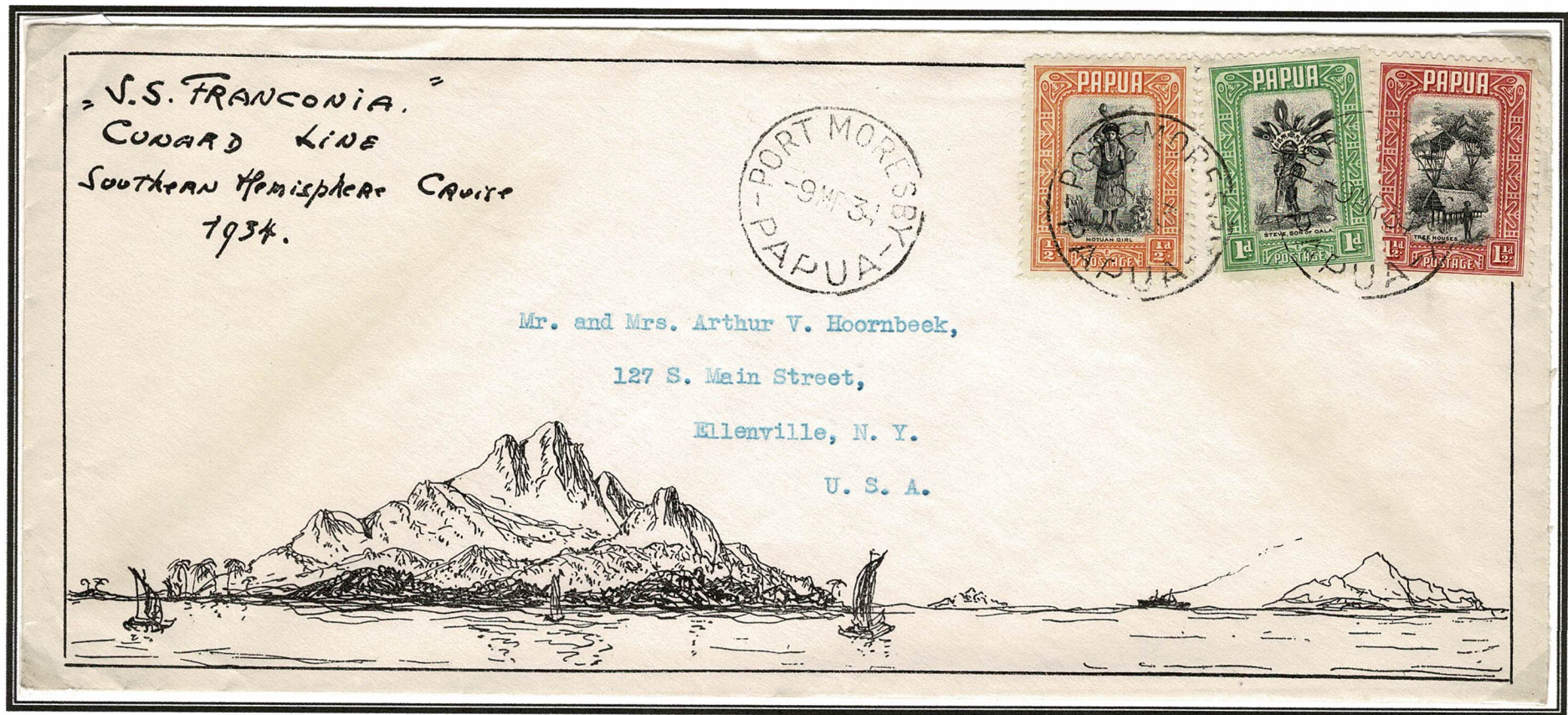
The Franconia arrived at Port Moresby Papua from Australia **March 9th 1934** departing after a short stay to Bali



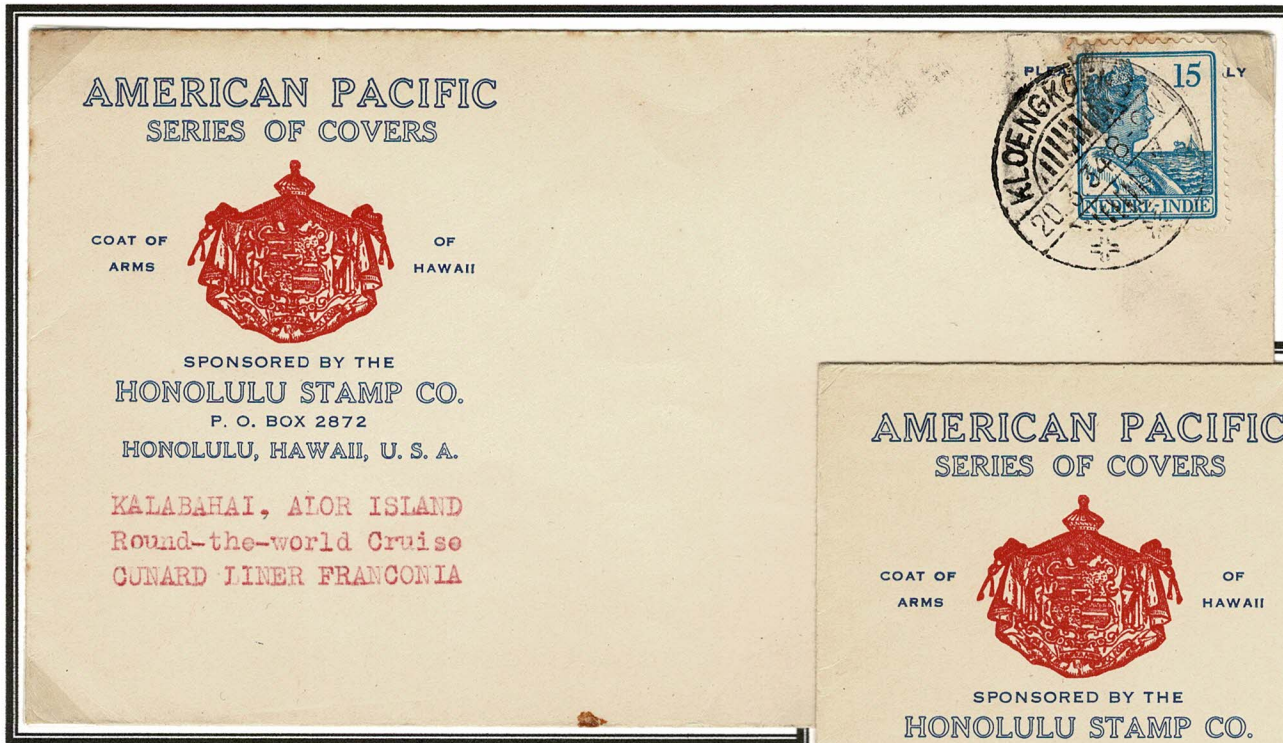
Special Southern Hemisphere Cruise 1934 envelopes with triple franking $\frac{1}{2}$ d [Motuan Girl]; 1d [Chieftain's son]; $1\frac{1}{2}$ d [Tree Houses] of the 1932 Papua issue. Postage 3d correct for foreign letter rate.

Upper envelope to Newspaper in New York; lower envelope addressed to Mr H P Borer who was Cunard's General Passenger Manager in 1929 then **Cunard General Manager** from 1932.





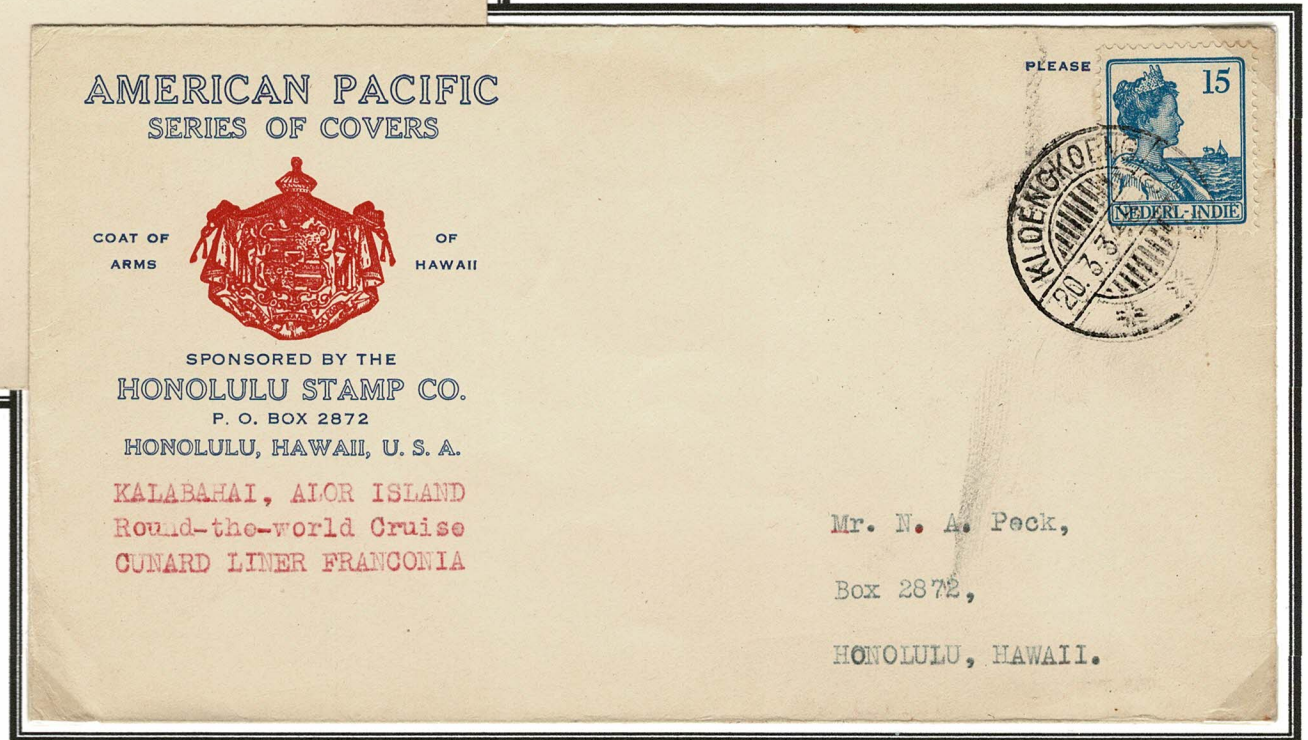
Special Southern Hemisphere Cruise 1934 envelopes with **triple franking** 1/2d [Motunan Girl]; 1d [Chieftain's son]; 1 1/2d [Tree Houses] of the 1932 Papua issue. Postage 3d correct for foreign letter rate. Cancelled **Port Moresby Papua 9 MR 34**



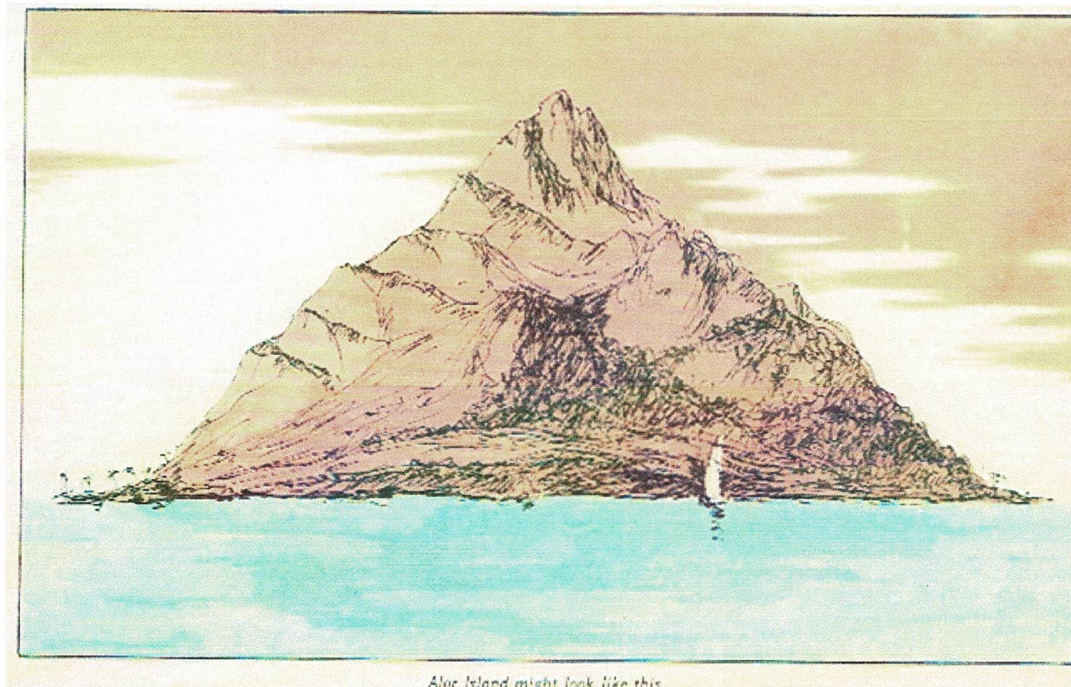
American Pacific covers "Kalabahai, Alor Island"

15c stamp of Netherland East Indies cancelled
Kloengkoeng 20.3.34

backstamped Victoria Hong Kong 31 MR 34



The Franconia called at **Kalabahai** capital of the Alor Island, part of the Lesser Sunda Islands, now part of Indonesia. **March 13th** afternoon. It was the first Cruise ship visit to Alor Island.



Alor Island might look like this

Page 34 of the Cunard promotional publication has this illustration. The text has:

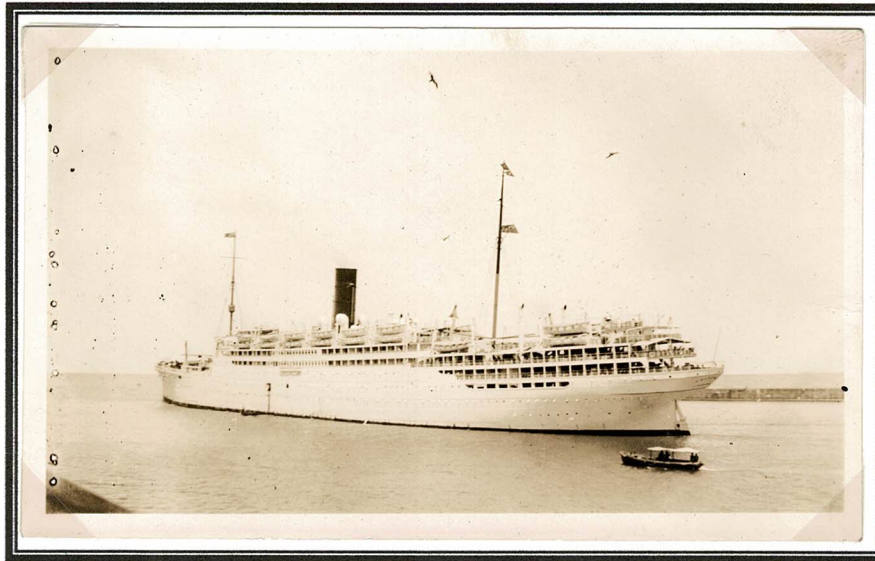
"The Franconia will steam slowly up the fjord-like channel and anchor in the lovely bay of Kalabahai in the lovely island of Alor, on the 'Sea of Flowers'."

"The inhabitants are exceedingly primitive ... Papuans, probably, 'wearing almost nothing, doing almost nothing, knowing almost nothing', and showing no trace of the Hindu influence that in Bali and Java you will soon encounter."

1934 Franconia Southern Hemisphere World Cruise

The Franconia arrived from Penang at Madras on Wednesday **March 23rd** in the morning departing for **Colombo**, Ceylon in the early afternoon that same day.

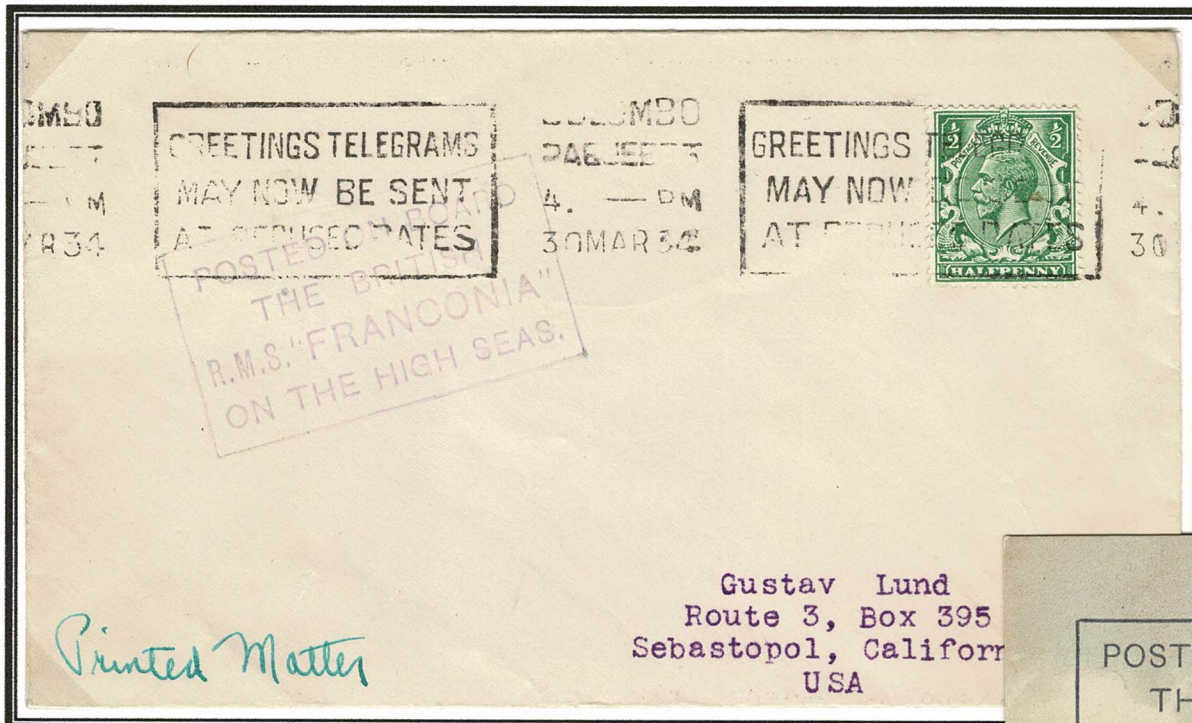
Franconia was at **Colombo March 30-31st** then headed to Port Victoria, Seychelles Islands.



Photograph annotated

"S.S. Franconia Leaving Madras Harbour March 1934 [World Cruise]"

Photo by Capt J.S.Campbell.



Colombo **PAQUEBOT 30 MAR 34** advertising slogan cancellation on 1/2d British stamp correct postage for *"Printed matter"* as endorsed. Addressed to California.

Has **Franconia cachet**



Boxed cachet - identical to that used on **Franconia I [1910-1917]**

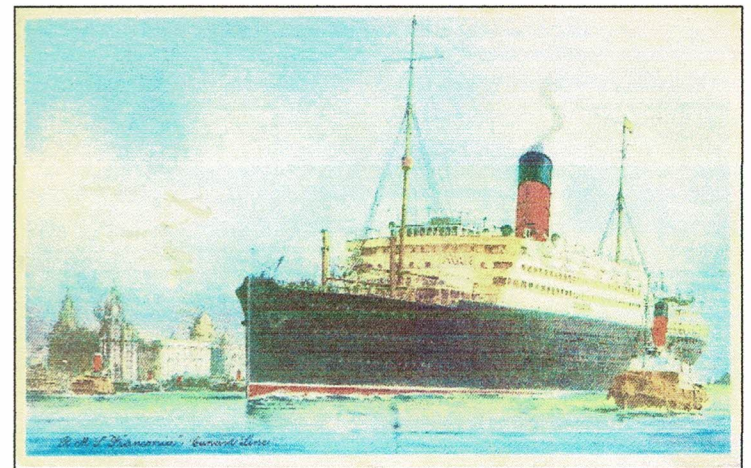
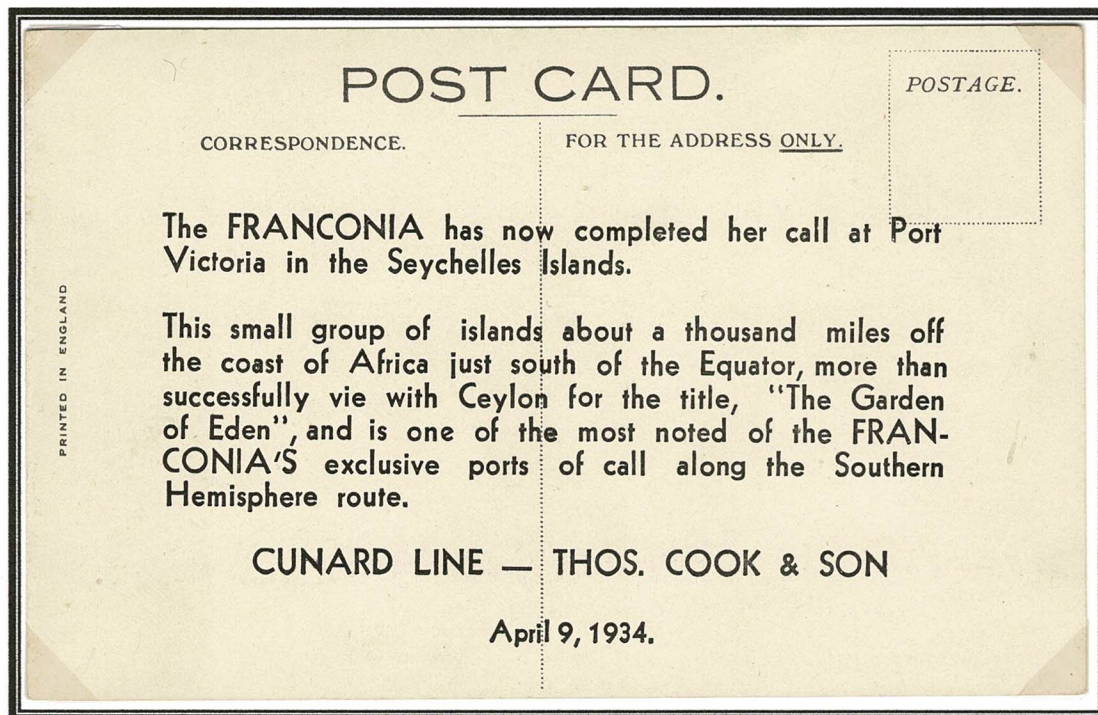
"Posted on Board the British R.M.S. "Franconia" on the High Seas"

1934 Franconia Southern Hemisphere World Cruise

The Franconia arrived from Colombo, Ceylon at **Port Victoria, Seychelles Islands** on the morning of **April 5th** and departed for Mombassa that evening. The passengers enjoyed an auto ride around the Island of Mahe and exhibitions of native dancing and arts and crafts.



Franconia World Cruise envelope with triple franking of Seychelles issue of 1917 [2c + 15c + 3c] - 20c correct rate. Port Victoria Seychelles 5 AP 34



Advice Postcard **April 9, 1934** after the visit to Port Victoria, Seychelles Islands

1934 Franconia Southern Hemisphere World Cruise

The Franconia arrived at **Diego Suarez, Madagascar** from Zanzibar on April 11, 1934 spending 5 hours before departing for Durban, South Africa.

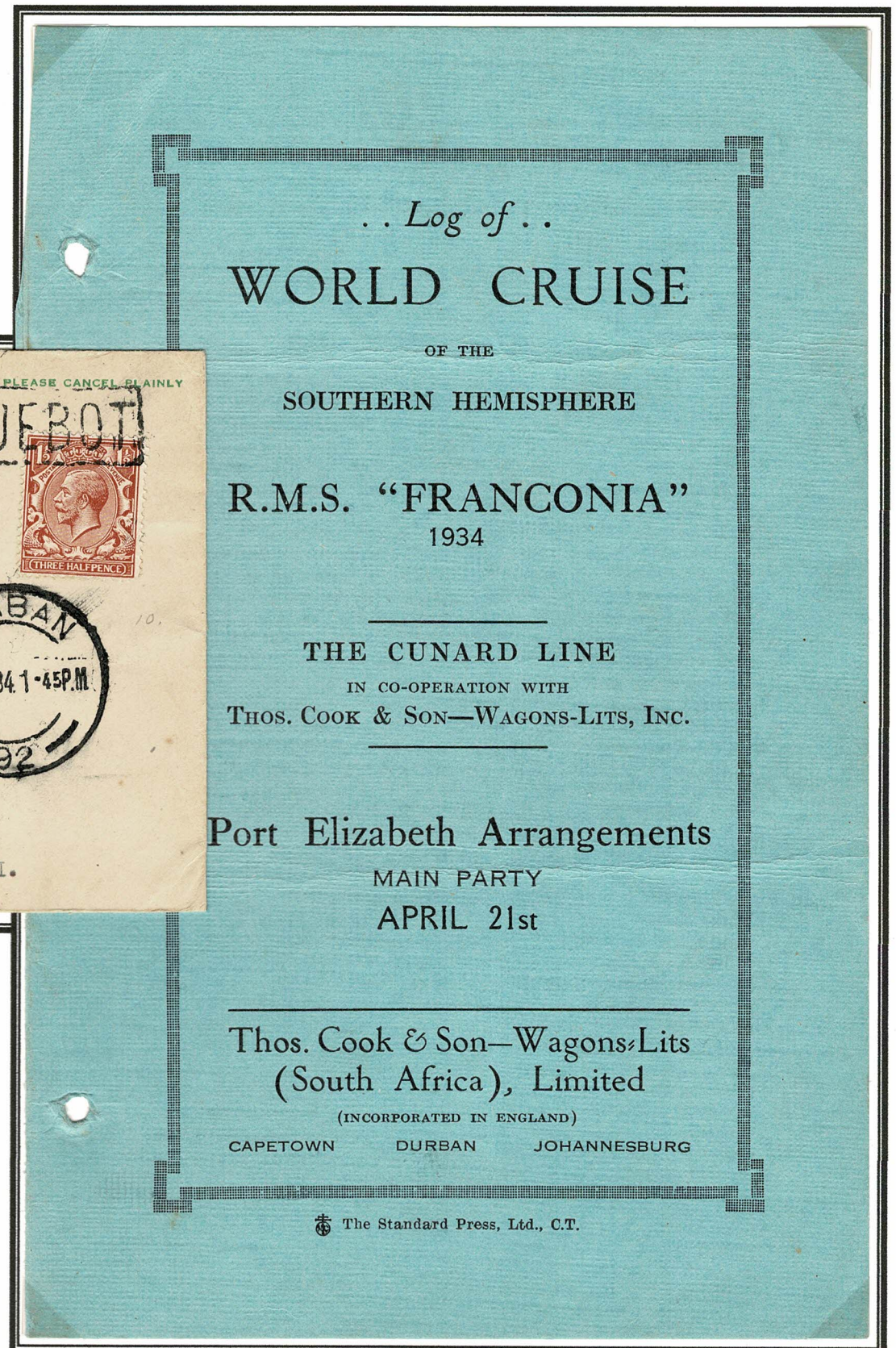
American Pacific envelope with "**Diego Suarez, Madagascar Round-the-World Cruise Cunard Liner Franconia.**" Franconia boxed cachet - Post on Board.

Taken ashore at next port of call receiving Boxed **PAQUEBOT** marking of Durban and **Durban** cancellation **16 APR 34** alongside as correct procedure



The Franconia arrived at **Durban April 16th**, departing for **Port Elizabeth** on April 19th arriving there on **April 21st** then leaving for Cape Town. The ship arrived **Cape Town April 23rd** departing for Montevideo in April 28th.

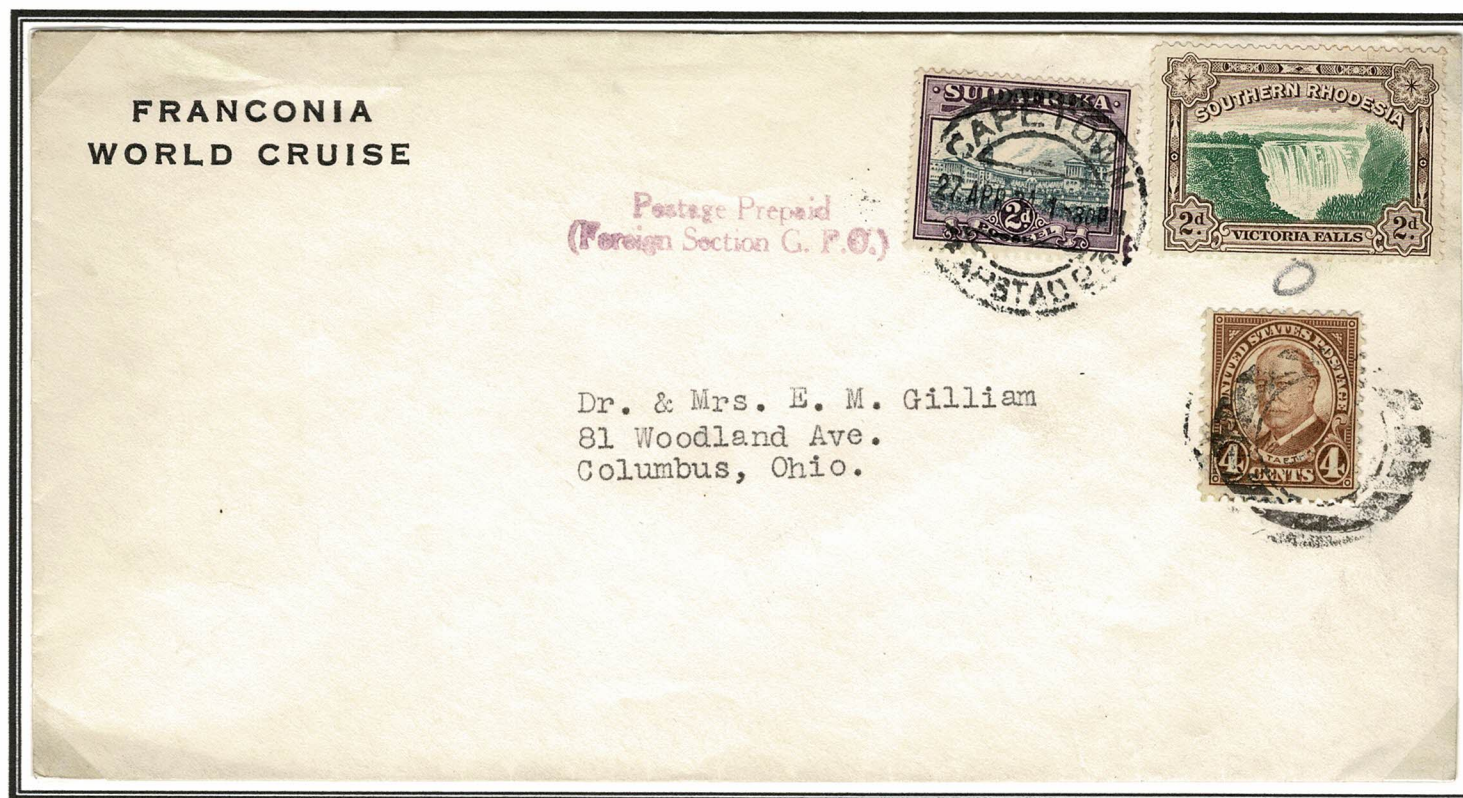
There three Alternate Tours available as part of the South African visit.

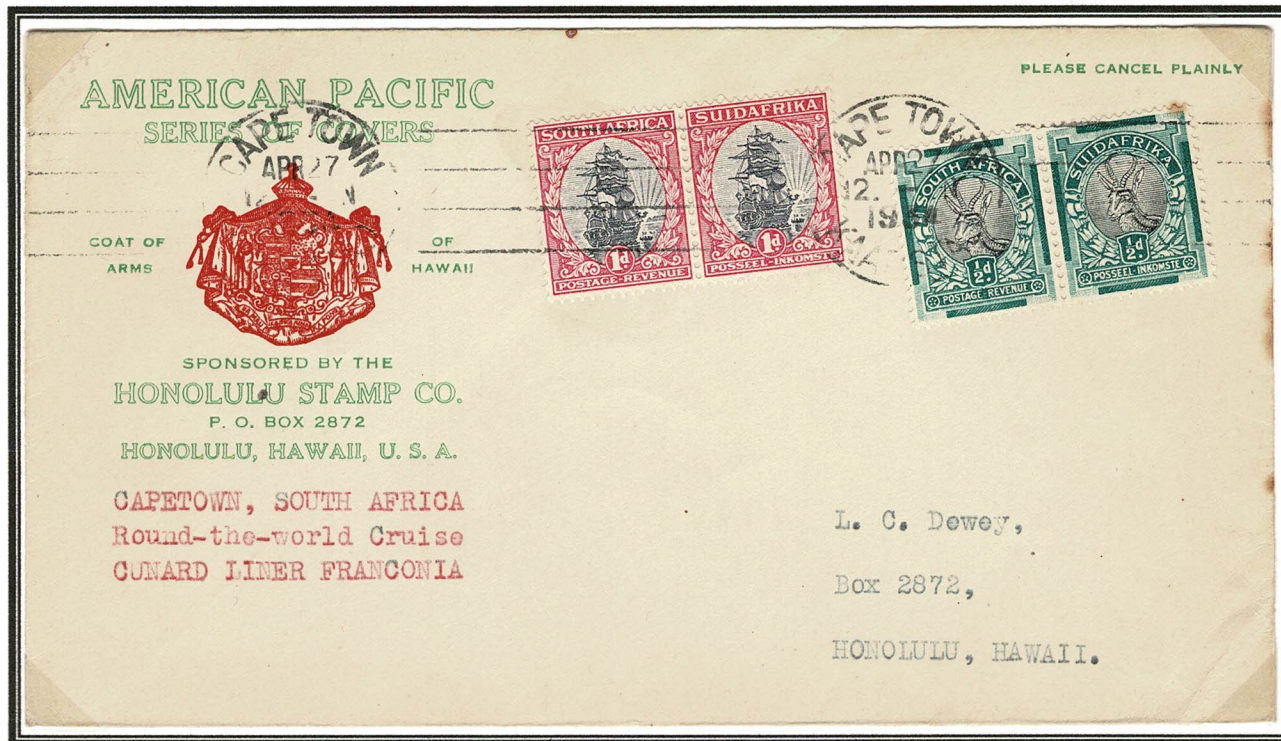




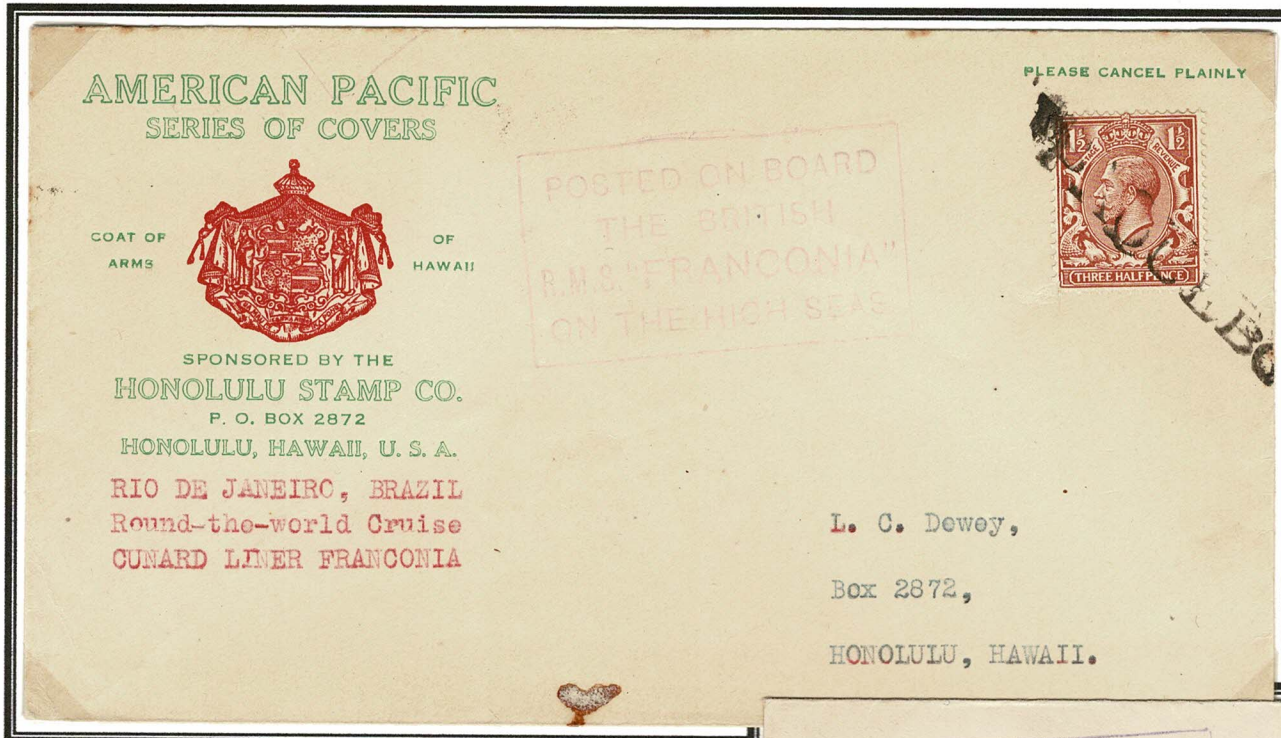
Illustrated Franconia Cruise envelope to USA with Airmail vignette and postage 1/3d including 2 values of the 1933 charity issue all cancelled Capetown 25 APR 34

Franconia World Cruise envelope with 2d South African stamp cancelled Capetown 27 APR 34; 2d Southern Rhodesia uncanceled; 4c USA obliterated and "Postage Prepaid" cachet from Foreign Section GPO



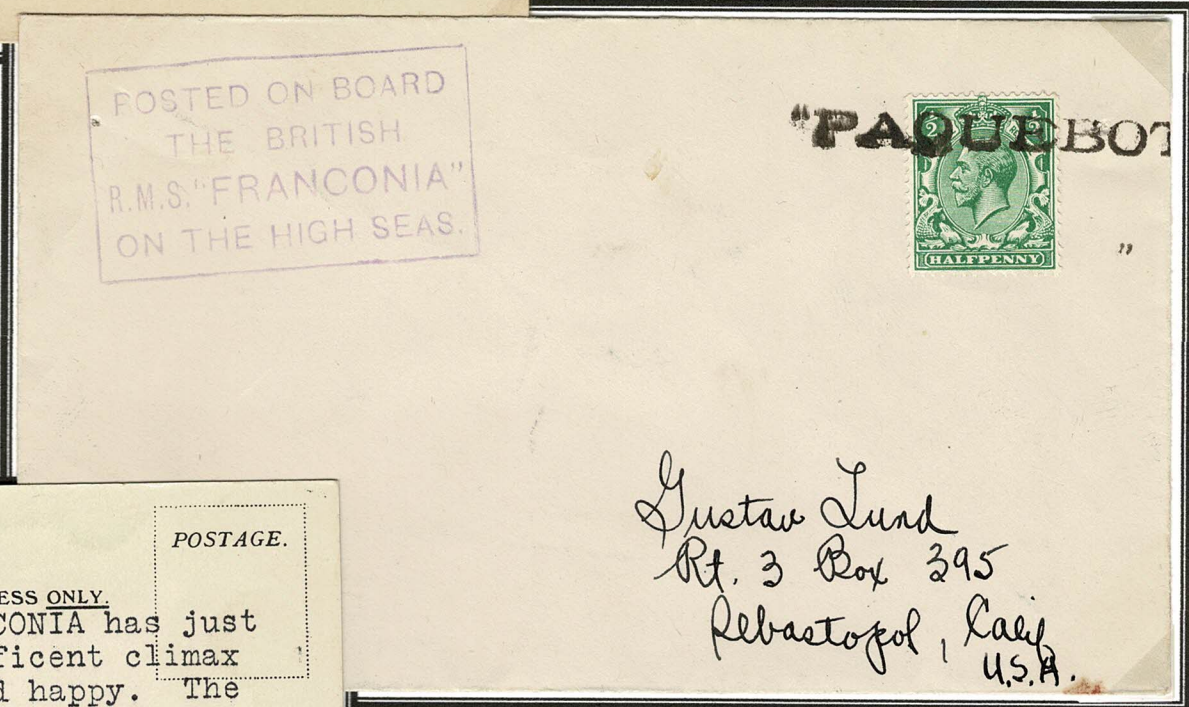


American Pacific Cover with pairs of 1d and 1/2d stamps cancelled Cape Town APR 27 1934.

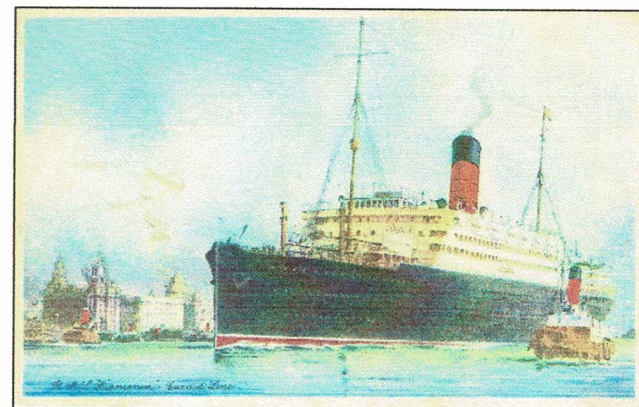
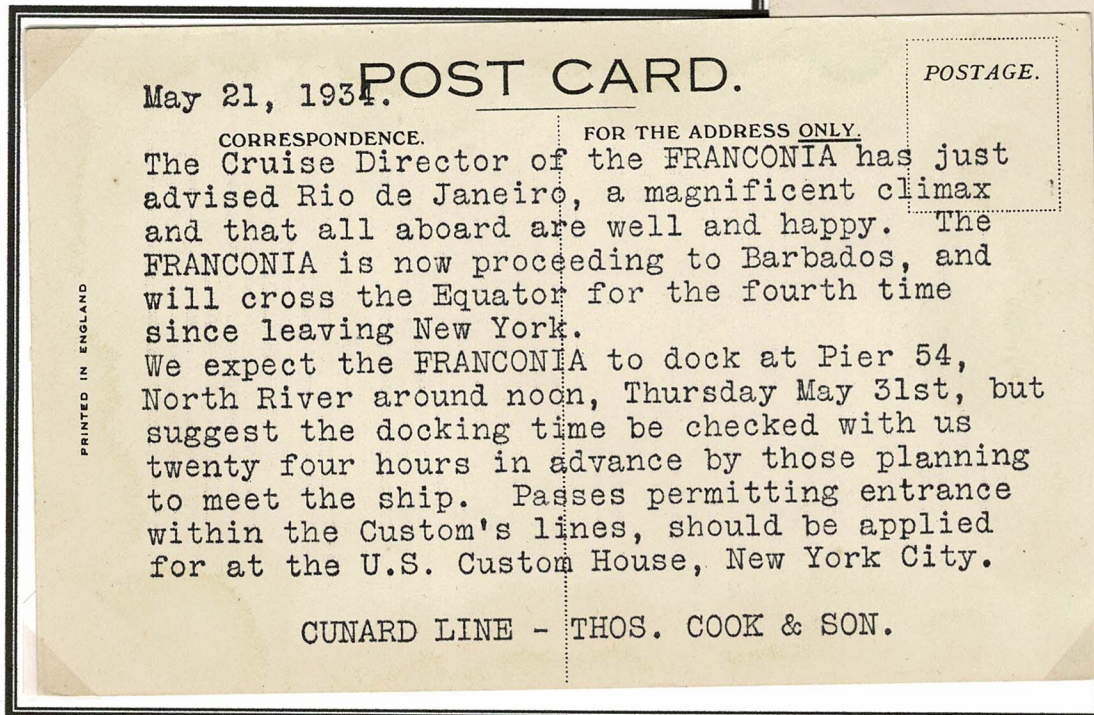


American Pacific Cover "Rio de Janeiro, Brazil" with PAQUEBOT marking and Boxed Posted on Board Franconia cachet.

Envelope "Printed matter" with stamp cancelled PAQUEBOT of Rio de Janeiro and Boxed Posted on Board Franconia cachet.



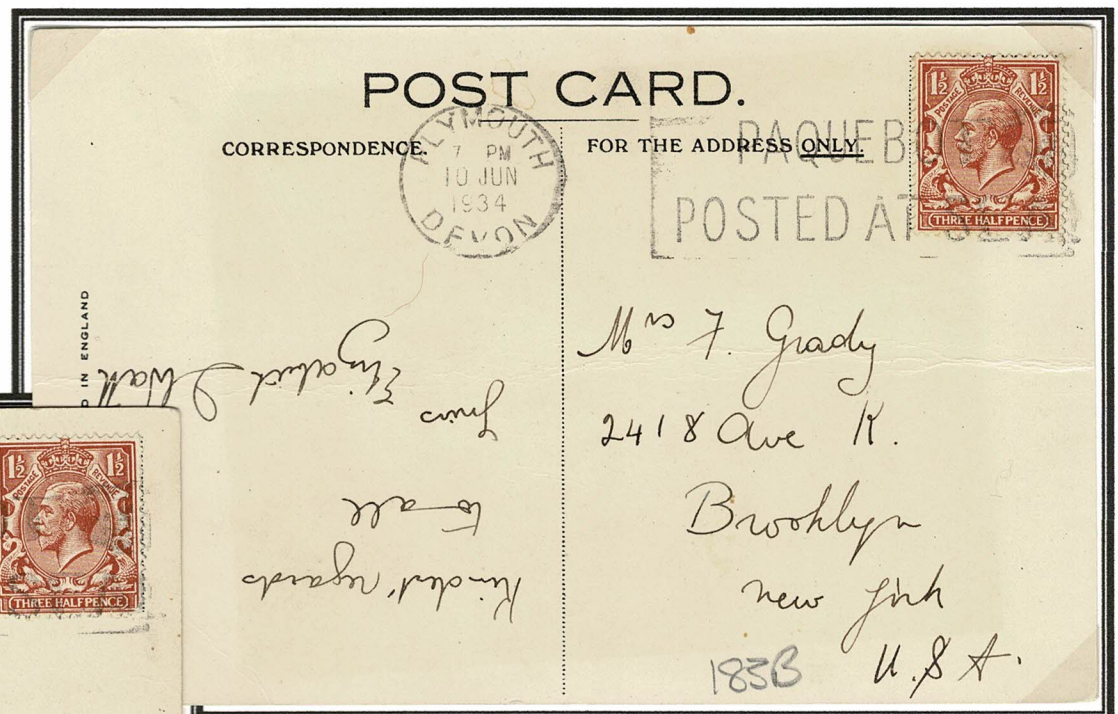
Advice postcard "May 21, 1934" sent following the visit to Rio de Janeiro via Barbados to New York





New York May 31 1934 on cover
with boxed **Posted on Board**
Franconia cachet.

Passengers from Europe crossed the Atlantic on board the
Franconia to Liverpool arriving June 11, 1934



Two Franconia postcards with Plymouth 7pm 10 JUN 1934
PAQUEBOT Posted at Sea cachet.

The mail from Franconia was taken off before the ship reached
Liverpool and mailed at Plymouth.

